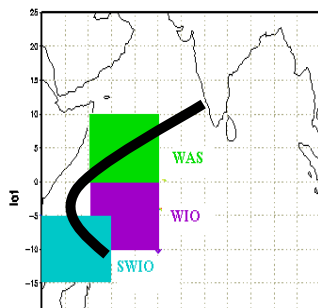


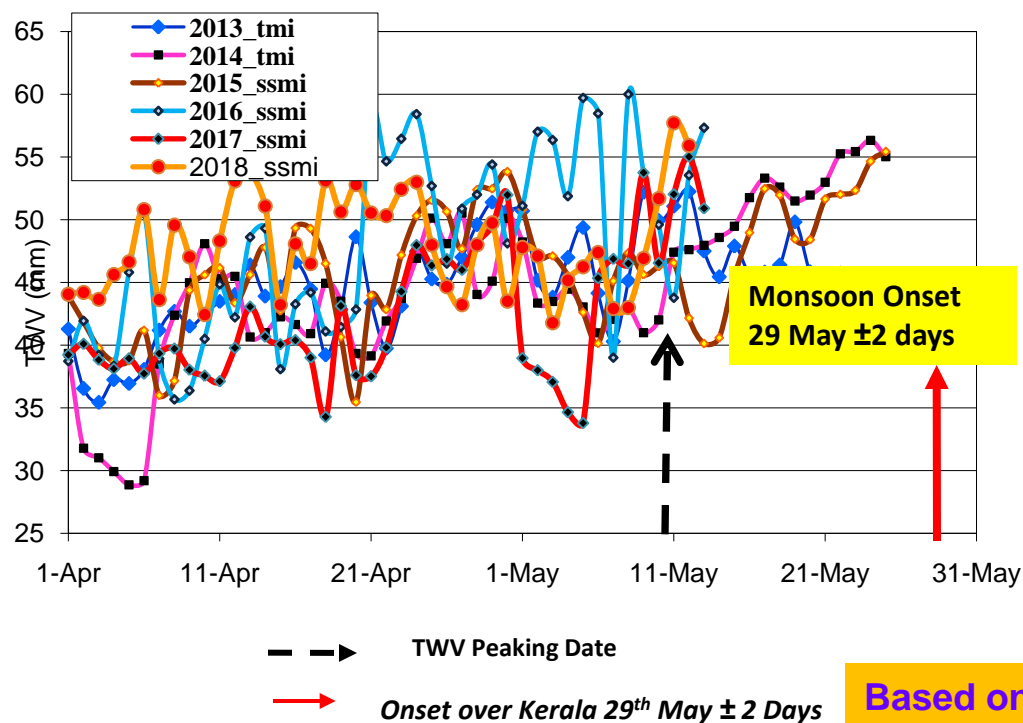
Monitoring of Monsoon Onset over Kerala-2018 Using Satellite Data

Monitoring the perspective onset precursors from SSMI -F16/17/18 & Other satellite data for 2018.
AS & BB cyclones can disturb the TWV build up during onset phase.

Various Segments over Indian Ocean –Monsoon onset



Updated TPW(SSMI-F-17) build-up over WAS in connection with MOK-2018



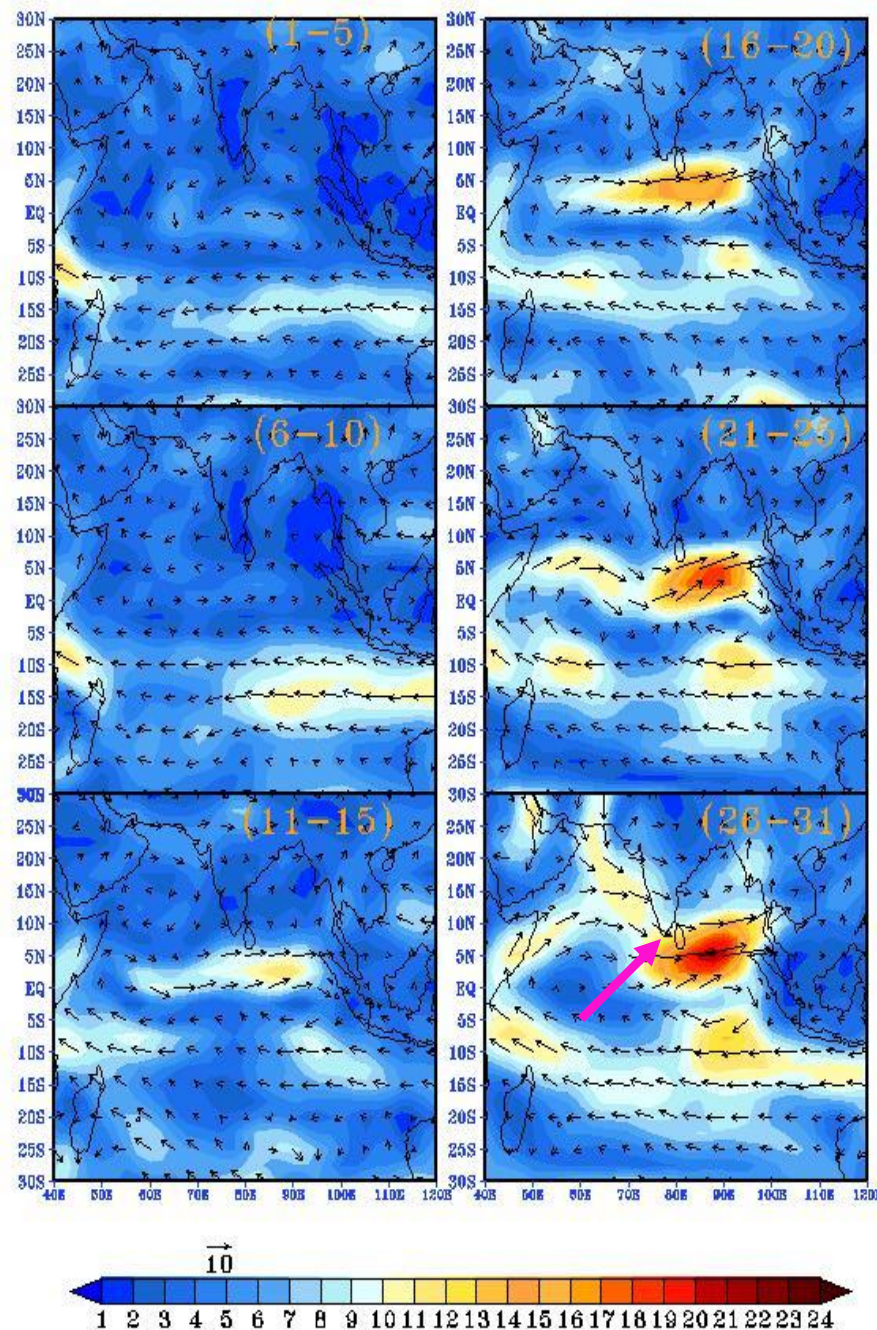
Year	Peaking Of TWV (mm)	Onset Date (IMD)	Difference	Pred. onset.
2006	11 May	26 May	15 Days	29 May
2007	11 May	28 May	17 Days	29 th May
2008	10 May	31 May	17 Days	28 th May
2009	7 May	23 May	16 Days	25 th may
2010	3 May	31 May	28 Days	21 may
2011	12 May	29 May	17 Days	30 th may
2012	18 May	5 th June	18 days	5 th June
2013	12 May	1 st June	20 days	30 th May
2014	17 May	6 th June	20 days	4 th June
2015	17 May	5 th June	19 days	4 th June
2016*	8 th MAY	8 th June	28 days	26 Th May
2017	12 th May	30 th May	18 days	30 th May
2018	11 ^h May	????	18 days	29 th May

* In 2016 Rainfall started by 27th May but 850hPa Wind Speed criteria did not meet according to IMD

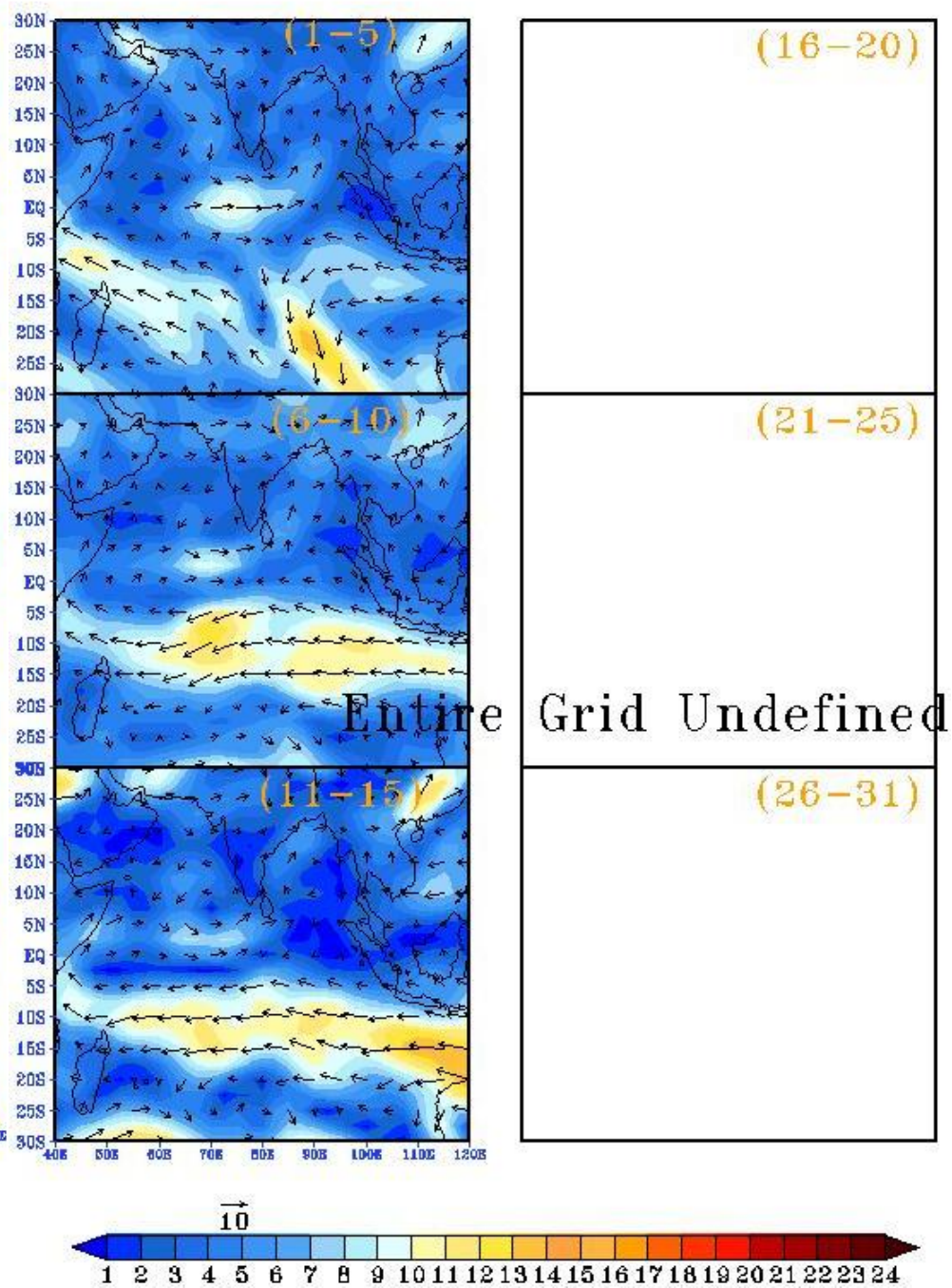
Updated TPW peaks at 11th May which indicates that 29th May (\pm 2 days) could be the Onset date over Kerala. [Predicted on 13th May 2018]

Based on , Simon et. al. Current Science vol 81, 6, 2001

NCEP Wind at 850 hPa May 2017



NCEP Wind at 850 hPa May 2018



MJO over -5 to +5 deg N using

Satellite derived OLR -2017 & 2018

