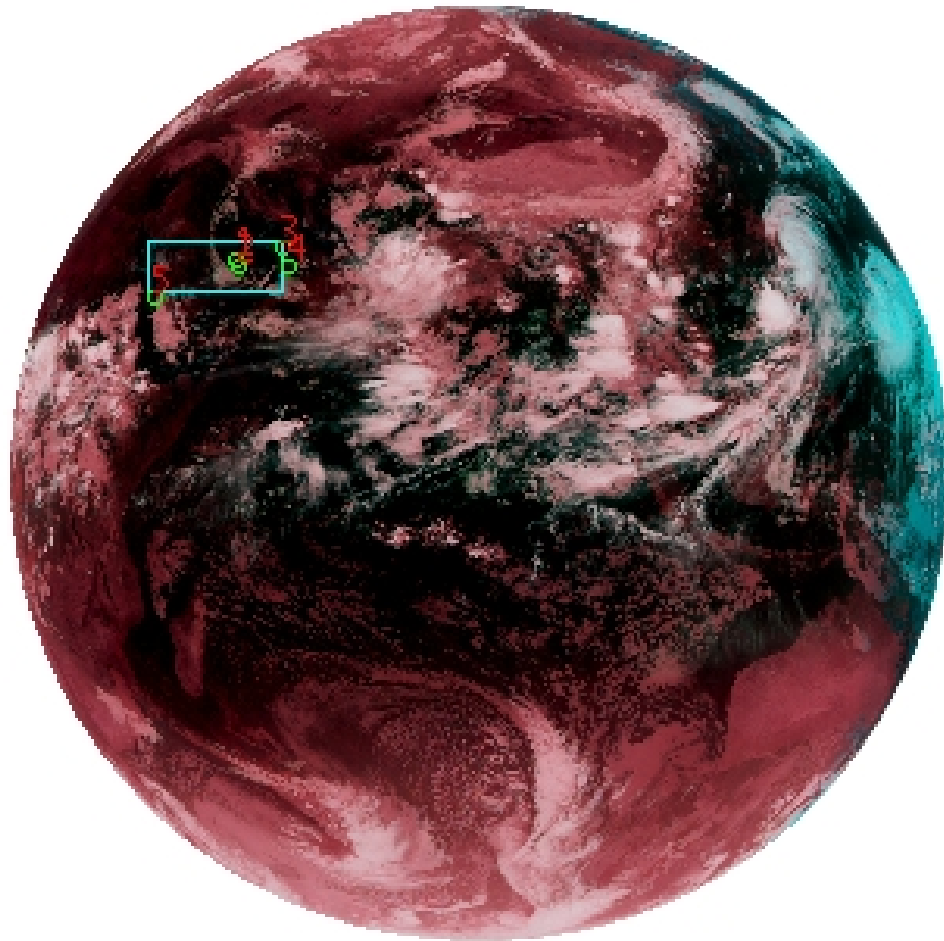


DQE Report: Location Accuracy of INSAT-3D-IMG STANDARD(FULL DISK) Product 3DIMG_08AUG2019_2130

Satellite INSAT-3D **No Of Bands** 6 **Product Type** STANDARD
Sensor IMG **LvlOfProcess** L1B **Selected Band** 2-TIR1
DOP/Time 08-08-19/21:30 **Station ID** BES **Field View(deg)** 17.974
Res(Y,X) [Km] (4.0,4.0) **Res(Y,X) [uRad]** (112.0,112.0)

(81.042N,0.843W)

(81.042N,163.157E)



(-81.042S,0.843W)

(-81.042S,163.157E)

GCP Distribution overview for 3DIMG08AUG20192130L1BSTD

Image Width: 2805 **Image Height:** 2816 **No Of GCPs:** 5

GCP Coverage(%) 5.15 **(N-S)** 13.69 **(E-W)**

Location Error(E)

Legend — 0Km < E <= 50Km — 50Km < E <= 100Km — E >100Km

Location Error (In IR Pixels)

| | Mean | Direction | Stddev | RMS |
|--------|--------|-----------|--------|-------|
| Along | 0.876 | N | 1.601 | 1.825 |
| Across | -1.260 | W | 1.607 | 2.042 |

Scale (Km)

| | Pixel Size | Stddev | %variation |
|---------|------------|--------|------------|
| Average | 5.186 | 0.405 | 29.650 |
| Along | 10.942 | 10.384 | 173.543 |
| Across | 5.367 | 0.511 | 34.167 |

Internal Distortion (in IR Pixels)

| | PeakToPeak | Mean | Stddev | RMS |
|--------|------------|--------|--------|-------|
| Along | 3.227 | -0.267 | 1.25 | 1.273 |
| Across | 1.439 | 1.339 | 0.54 | 1.442 |

Attitude Residuals (Deg)

| Pitch | Roll | Yaw |
|----------|----------|---------|
| -0.03946 | -0.03204 | 0.29280 |

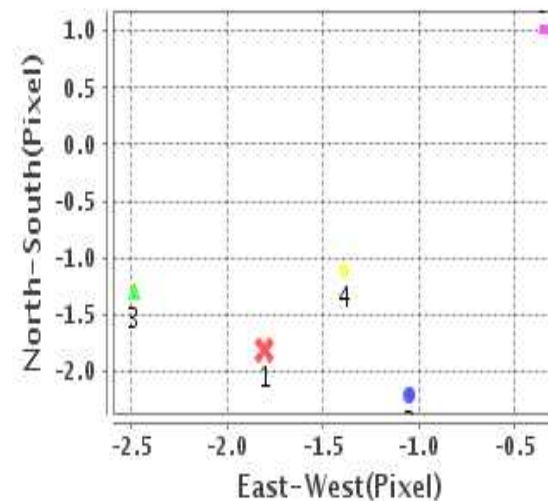
Reference Used

| Sensor | Resolution | Projection |
|--------|------------|------------|
| ETM | 500.00 | GGP |

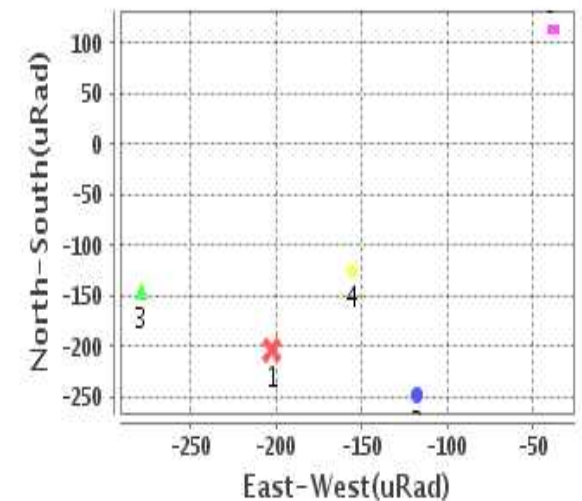
Radial Error (in IR Pixels)

| | |
|-------------|-------|
| Mean | 2.576 |
| Min | 1.079 |
| Max | 3.994 |
| CE90 | 2.708 |

Location Error For GCPs(Pixel)



Location Error For GCPs(uRad)



Detailed Product Information

Ancillary Info

| | | | |
|--------------------------|---------------|----------------------------------|------------|
| Satellite | INSAT-3D | Generation Date | 09-08-19 |
| Sensor | IMG | DQE Date | 09-08-2019 |
| PassType | NONE | Aquisition Date | 08-08-19 |
| Imaging Mode | FULL_FRAME | Aquisition Time(GMT) | 21:30 |
| Sat Altitude(m) | 3.6E7 | Nominal Altitude(Km) | 3.6E7 |
| Station | BES | Predicted Altitude(Km) | -999.99 |
| Sat Location(deg) | -999.99 E | Nominal Center Lat(deg) | 0.0 |
| Format | hdf5-1.8.8 | Nominal Center Lon(deg) | 82.0 |
| LvlOfProcessing | STANDARD(FULL | Predicted Center Lat(deg) | -999.99 |
| DP JobId | 3DIMG_08AUG2 | Predicted Center Lon(deg) | -999.99 |
| ProductCode | NONE | | |
| Field View(deg) | 17.974 | | |

Projection Parameters

| | |
|--------------------------------------|----------|
| Projection | None |
| Ellipsoid | WGS_84 |
| Datum | WGS_84 |
| Zone | NotAvail |
| Semi_Major_Axis(Km) | 6378.14 |
| Semi_Minor_Axis(Km) | 6356.75 |
| Standard_Parallel1(deg) | -999.99 |
| Standard_Parallel2(deg) | -999.99 |
| Projection_Origin_Lon(deg) | -999.99 |
| Projection_Origin_Lat(deg) | -999.99 |
| Projection_False_Easting(Km) | -999.99 |
| Projection_False_Northing(Km) | -999.99 |

Scene Center Desc

| | |
|--------------------------|---------|
| Centre Lat(deg) | 0.0 |
| Center Lon(deg) | 82.0 |
| Centre Roll(deg) | -999.0 |
| Centre Pitch(deg) | -999.0 |
| Center Yaw(deg) | -999.0 |
| SunElevation(deg) | -999.99 |
| SunAzimuth(deg) | -999.99 |
| SatElevation(deg) | -999.99 |
| SatAzimuth(deg) | -999.99 |

Scene Corner Desc

| | |
|--------------------|---------|
| NW_Lat(deg) | 81.042 |
| NW_Lon(deg) | 0.843 |
| SW_Lat(deg) | -81.042 |
| SW_Lon(deg) | 0.843 |
| NE_Lat(deg) | 81.042 |
| NE_Lon(deg) | 163.157 |
| SE_Lat(deg) | -81.042 |
| SE_Lon(deg) | 163.157 |

Band Wise Details

| | Res_AL(Km) | Res_AX(Km) | Image Height | Image Width |
|-------------|------------|------------|--------------|-------------|
| MIR | 4.0 | 4.0 | 2816 | 2805 |
| SWIR | 1.0 | 1.0 | 11264 | 11220 |
| TIR1 | 4.0 | 4.0 | 2816 | 2805 |
| TIR2 | 4.0 | 4.0 | 2816 | 2805 |
| VIS | 1.0 | 1.0 | 11264 | 11220 |
| WV | 8.0 | 8.0 | 1408 | 1402 |

GDQE Computation Base

| | | | | | | | |
|-------------------|----------------|--------------------------------------|--------|-------------------------------|------------|----------------------------|-----------|
| Projection | MER | Wildpoint Rejection Threshold | 2.60 | SemiMajorAxis(m) | 6378137.00 | Mode Of Computation | grid |
| Ellipsoid | WGS_84 | | -sigma | SemiMinorAxis(m) | 6356752.31 | Used Reference Type | REFINSREF |
| Datum | WGS_84 | Unit | pixels | Standardparallel1(deg) | 17.0 | | |
| Zone | Not Applicable | | | Standardparallel2(deg) | 17.0 | | |

* -999.99 : Not Applicable/Not Available

References

JobId : 3DIMG08AUG20192130L1BSTD

(-999.99 - Not Available/Not Computed)

| Ref.No | Source | File Name | Resolution (m) | Projection |
|--------|--------|-----------------|------------------|------------|
| 1 | ETM | world_Band1.img | 500.0 | GGP |

Location Accuracy

GCP Distribution Statistics

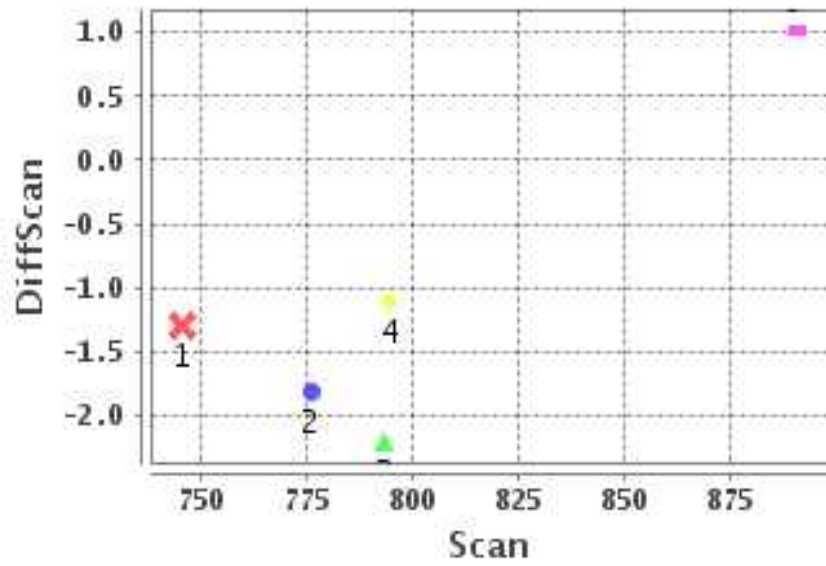
Image Width (pixels) : 2805 Image Height (pixels) : 2816 No of GCPs : 5

| | Mean | StdDev | Min | Max | Coverage(in %) |
|-----------------|-------|--------|-------|--------|----------------|
| GCP Scan | 800.0 | 48.6 | 745.5 | 890.50 | 5.15 (N-S) |
| GCP Pix | 700.4 | 138.0 | 454.8 | 838.75 | 13.69 (E-W) |

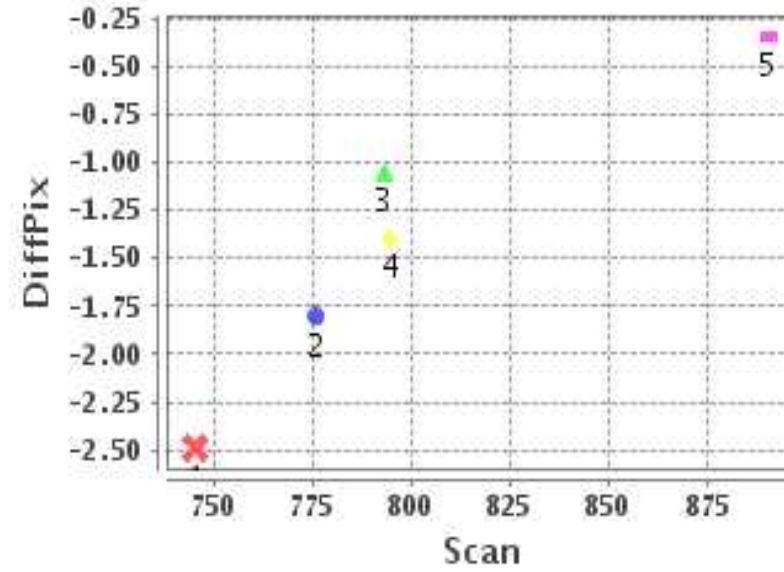
Identified Control Point details : (Differences are Reference - Product)

| No | Scan | Pix | DiffScan (line) | DiffPix (pixel) | DifLat (Km) | Dir | DifLon (Km) | Dir | Status |
|----|-------|-------|-----------------|-----------------|-------------|-----|-------------|-----|----------|
| 1 | 776.0 | 685.0 | -1.8 | -1.81 | 9.216 | N | 13.048 | W | Accepted |
| 2 | 793.2 | 698.8 | -2.2 | -1.05 | 10.025 | N | 4.023 | W | Accepted |
| 3 | 745.5 | 824.8 | -1.3 | -2.49 | 4.501 | N | 9.852 | W | Accepted |
| 4 | 794.8 | 838.8 | -1.1 | -1.39 | 1.427 | N | 4.073 | W | Accepted |
| 5 | 890.5 | 454.8 | 1.0 | -0.35 | 7.655 | S | 5.796 | E | Accepted |

Error(Pixels) Vs. GCPScan



Error(Pixels) Vs. GCPScan



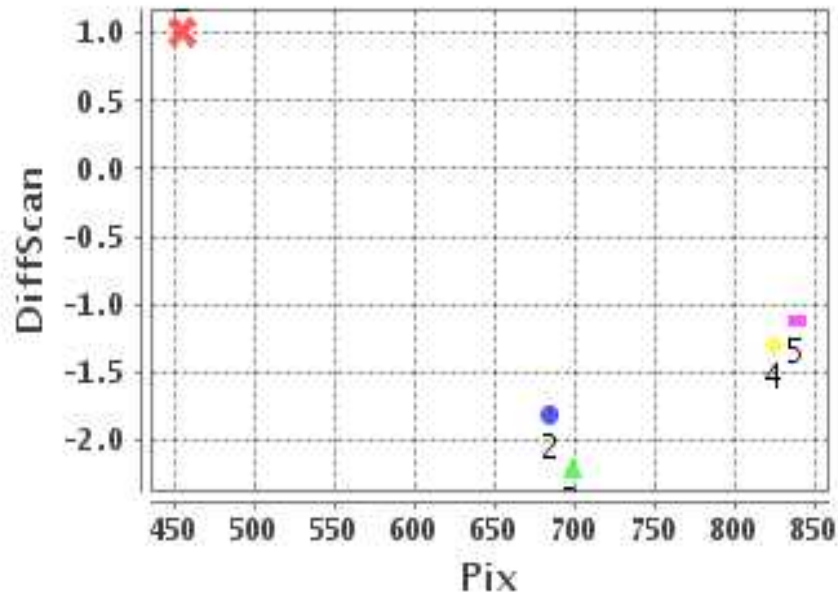
Number Of Points

| | |
|-------|---|
| North | 4 |
| South | 1 |
| East | 1 |
| West | 4 |

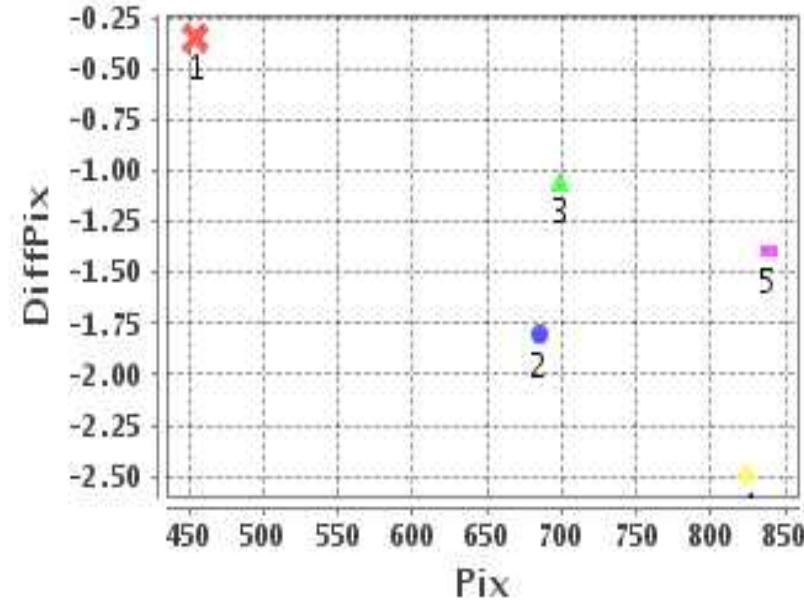
Radial Error (Km)

| | |
|------|-------|
| Mean | 2.576 |
| Min | 1.079 |
| Max | 3.994 |
| CE90 | 2.708 |

Error(Pixels) Vs. GCPPix



Error(Pixels) Vs. GCPPix



Location Accuracy

| | Mean | StdDev | RMS | Dir | * MinRMS | * MaxRMS |
|---------------|--------|--------|-------|-----|----------|----------|
| Along(Km) | 0.876 | 1.601 | 1.825 | N | 1.610 | 2.032 |
| Across (Km) | -1.260 | 1.607 | 2.042 | W | 1.598 | 2.227 |

Block-Wise Geo location Error Statistics

Location Accuracy,Scale,ID

| | | |
|--|-------|-------|
| Scan Range-0-937; Pix Range-0-934 | | |
| Number of GCPs | 5 | |
| Location Error(Km) | | |
| Along(Mean,Dir) | 3.504 | N |
| Across(Mean,Dir) | -5.04 | W |
| Scale(Km) | | |
| Average Scale (Mean,%Variation) | 5.19 | 29.65 |
| Internal Distortion(Pixel) | | |
| Along(Mean,Stddev) | -0.27 | 1.25 |
| Across(Mean,Stddev) | 1.34 | 0.54 |

| | | |
|---|---------|----------|
| Scan Range-0-937; Pix Range-934-1869 | | |
| Number of GCPs | -999 | |
| Location Error(Km) | | |
| Along(Mean,Dir) | -999.99 | NotAvail |
| Across(Mean,Dir) | -999.99 | NotAvail |
| Scale(Km) | | |
| Average Scale (Mean,%Variation) | -999.99 | -999.9 |
| Internal Distortion(Pixel) | | |
| Along(Mean,Stddev) | -999.99 | -999.99 |
| Across(Mean,Stddev) | -999.99 | -999.99 |

| | | |
|--|---------|----------|
| Scan Range-0-937; Pix Range-1869-2805 | | |
| Number of GCPs | -999 | |
| Location Error(Km) | | |
| Along(Mean,Dir) | -999.99 | NotAvail |
| Across(Mean,Dir) | -999.99 | NotAvail |
| Scale(Km) | | |
| Average Scale (Mean,%Variation) | -999.99 | -999.9 |
| Internal Distortion(Pixel) | | |
| Along(Mean,Stddev) | -999.99 | -999.99 |
| Across(Mean,Stddev) | -999.99 | -999.99 |

| | | |
|---|---------|----------|
| Scan Range-937-1876; Pix Range-0-934 | | |
| Number of GCPs | -999 | |
| Location Error(Km) | | |
| Along(Mean,Dir) | -999.99 | NotAvail |
| Across(Mean,Dir) | -999.99 | NotAvail |
| Scale(Km) | | |
| Average Scale (Mean,%Variation) | -999.99 | -999.9 |
| Internal Distortion(Pixel) | | |
| Along(Mean,Stddev) | -999.99 | -999.99 |
| Across(Mean,Stddev) | -999.99 | -999.99 |

| | | |
|--|---------|----------|
| Scan Range-937-1876; Pix Range-934-1869 | | |
| Number of GCPs | -999 | |
| Location Error(Km) | | |
| Along(Mean,Dir) | -999.99 | NotAvail |
| Across(Mean,Dir) | -999.99 | NotAvail |
| Scale(Km) | | |
| Average Scale (Mean,%Variation) | -999.99 | -999.9 |
| Internal Distortion(Pixel) | | |
| Along(Mean,Stddev) | -999.99 | -999.99 |
| Across(Mean,Stddev) | -999.99 | -999.99 |

| | | |
|---|---------|----------|
| Scan Range-937-1876; Pix Range-1869-2805 | | |
| Number of GCPs | -999 | |
| Location Error(Km) | | |
| Along(Mean,Dir) | -999.99 | NotAvail |
| Across(Mean,Dir) | -999.99 | NotAvail |
| Scale(Km) | | |
| Average Scale (Mean,%Variation) | -999.99 | -999.9 |
| Internal Distortion(Pixel) | | |
| Along(Mean,Stddev) | -999.99 | -999.99 |
| Across(Mean,Stddev) | -999.99 | -999.99 |

| | | |
|--|---------|----------|
| Scan Range-1876-2816; Pix Range-0-934 | | |
| Number of GCPs | -999 | |
| Location Error(Km) | | |
| Along(Mean,Dir) | -999.99 | NotAvail |
| Across(Mean,Dir) | -999.99 | NotAvail |
| Scale(Km) | | |
| Average Scale (Mean,%Variation) | -999.99 | -999.9 |
| Internal Distortion(Pixel) | | |
| Along(Mean,Stddev) | -999.99 | -999.99 |
| Across(Mean,Stddev) | -999.99 | -999.99 |

| | | |
|---|---------|----------|
| Scan Range-1876-2816; Pix Range-937-1869 | | |
| Number of GCPs | -999 | |
| Location Error(Km) | | |
| Along(Mean,Dir) | -999.99 | NotAvail |
| Across(Mean,Dir) | -999.99 | NotAvail |
| Scale(Km) | | |
| Average Scale (Mean,%Variation) | -999.99 | -999.9 |
| Internal Distortion(Pixel) | | |
| Along(Mean,Stddev) | -999.99 | -999.99 |
| Across(Mean,Stddev) | -999.99 | -999.99 |

| | | |
|--|---------|----------|
| Scan Range-1876-2816; Pix Range-1869-2805 | | |
| Number of GCPs | -999 | |
| Location Error(Km) | | |
| Along(Mean,Dir) | -999.99 | NotAvail |
| Across(Mean,Dir) | -999.99 | NotAvail |
| Scale(Km) | | |
| Average Scale (Mean,%Variation) | -999.99 | -999.9 |
| Internal Distortion(Pixel) | | |
| Along(Mean,Stddev) | -999.99 | -999.99 |
| Across(Mean,Stddev) | -999.99 | -999.99 |

*-999 : no gcp available

* -999.99 : values are not computed