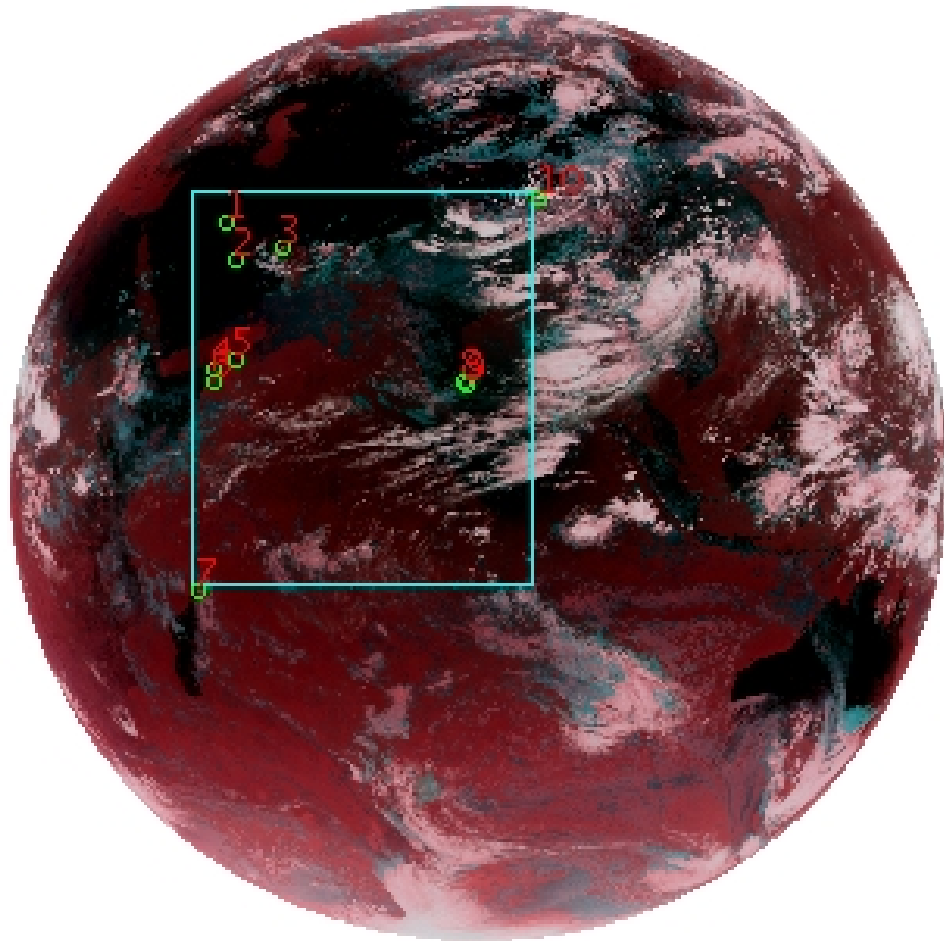


# DQE Report: Location Accuracy of INSAT-3D-IMG STANDARD(FULL DISK) Product 3DIMG\_30AUG2018\_0600

**Satellite** INSAT-3D      **No Of Bands** 6      **Product Type** STANDARD  
**Sensor** IMG      **LvlOfProcess** L1B      **Selected Band** 2-TIR1  
**DOP/Time** 30-08-18/06:00      **Station ID** BES      **Field View(deg)** 17.974  
**Res(Y,X) [Km]** (4.0,4.0)      **Res(Y,X) [uRad]** (112.0,112.0)

(81.042N,0.843W)

(81.042N,163.157E)



(-81.042S,0.843W)

(-81.042S,163.157E)

GCP Distribution overview for 3DIMG30AUG20180600L1BSTD

**Image Width:** 2805      **Image Height:** 2816      **No Of GCPs:** 10

**GCP Coverage(%)** 40.24      **(N-S)** 35.04      **(E-W)**

## Location Error(E)

**Legend**      — 0Km < E <= 50Km      — 50Km < E <= 100Km      — E >100Km

## Location Error (In IR Pixels)

	Mean	Direction	Stddev	RMS
Along	-0.342	S	1.049	1.104
Across	-2.168	W	1.682	2.744

## Scale (Km)

	Pixel Size	Stddev	%variation
Average	4.508	0.435	12.698
Along	4.823	2.768	20.569
Across	10.670	38.533	166.763

## Internal Distortion (in IR Pixels)

	PeakToPeak	Mean	Stddev	RMS
Along	3.387	-1.028	0.91	1.375
Across	4.721	0.336	1.59	1.620

## Attitude Residuals (Deg)

Pitch	Roll	Yaw
-0.02097	-0.00567	0.12569

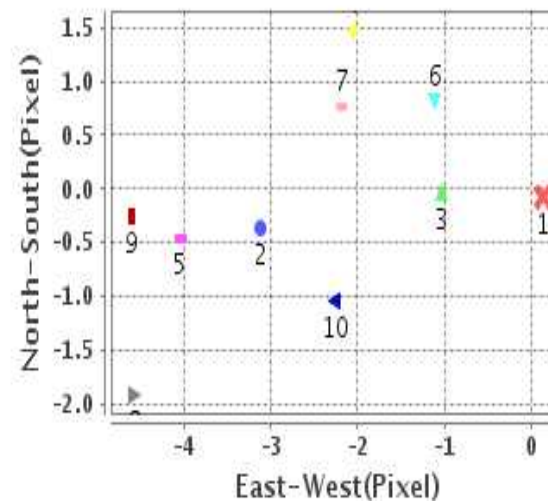
## Reference Used

Sensor	Resolution	Projection
ETM	500.00	GGP

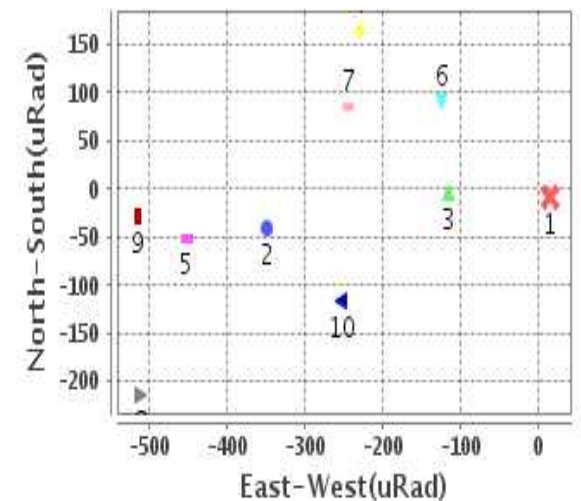
## Radial Error (in IR Pixels)

<b>Mean</b>	2.718
<b>Min</b>	.984
<b>Max</b>	4.331
<b>CE90</b>	4.237

## Location Error For GCPs(Pixel)



## Location Error For GCPs(uRad)



## Detailed Product Information

### Ancillary Info

<b>Satellite</b>	INSAT-3D	<b>Generation Date</b>	30-08-18
<b>Sensor</b>	IMG	<b>DQE Date</b>	31-08-2018
<b>PassType</b>	NONE	<b>Aquisition Date</b>	30-08-18
<b>Imaging Mode</b>	FULL_FRAME	<b>Aquisition Time(GMT)</b>	06:00
<b>Sat Altitude(m)</b>	3.6E7	<b>Nominal Altitude(Km)</b>	3.6E7
<b>Station</b>	BES	<b>Predicted Altitude(Km)</b>	-999.99
<b>Sat Location(deg)</b>	-999.99 E	<b>Nominal Center Lat(deg)</b>	0.0
<b>Format</b>	hdf5-1.8.8	<b>Nominal Center Lon(deg)</b>	82.0
<b>LvlOfProcessing</b>	STANDARD(FULL)	<b>Predicted Center Lat(deg)</b>	-999.99
<b>DP JobId</b>	3DIMG_30AUG2	<b>Predicted Center Lon(deg)</b>	-999.99
<b>ProductCode</b>	NONE		
<b>Field View(deg)</b>	17.974		

### Projection Parameters

<b>Projection</b>	None
<b>Ellipsoid</b>	WGS_84
<b>Datum</b>	WGS_84
<b>Zone</b>	NotAvail
<b>Semi_Major_Axis(Km)</b>	6378.14
<b>Semi_Minor_Axis(Km)</b>	6356.75
<b>Standard_Parallel1(deg)</b>	-999.99
<b>Standard_Parallel2(deg)</b>	-999.99
<b>Projection_Origin_Lon(deg)</b>	-999.99
<b>Projection_Origin_Lat(deg)</b>	-999.99
<b>Projection_False_Easting(Km)</b>	-999.99
<b>Projection_False_Northing(Km)</b>	-999.99

### Scene Center Desc

<b>Centre Lat(deg)</b>	0.0
<b>Center Lon(deg)</b>	82.0
<b>Centre Roll(deg)</b>	-999.0
<b>Centre Pitch(deg)</b>	-999.0
<b>Center Yaw(deg)</b>	-999.0
<b>SunElevation(deg)</b>	-999.99
<b>SunAzimuth(deg)</b>	-999.99
<b>SatElevation(deg)</b>	-999.99
<b>SatAzimuth(deg)</b>	-999.99

### Scene Corner Desc

<b>NW_Lat(deg)</b>	81.042
<b>NW_Lon(deg)</b>	0.843
<b>SW_Lat(deg)</b>	-81.042
<b>SW_Lon(deg)</b>	0.843
<b>NE_Lat(deg)</b>	81.042
<b>NE_Lon(deg)</b>	163.157
<b>SE_Lat(deg)</b>	-81.042
<b>SE_Lon(deg)</b>	163.157

### Band Wise Details

	Res_AL(Km)	Res_AX(Km)	Image Height	Image Width
<b>MIR</b>	4.0	4.0	2816	2805
<b>SWIR</b>	1.0	1.0	11264	11220
<b>TIR1</b>	4.0	4.0	2816	2805
<b>TIR2</b>	4.0	4.0	2816	2805
<b>VIS</b>	1.0	1.0	11264	11220
<b>WV</b>	8.0	8.0	1408	1402

## GDQE Computation Base

<b>Projection</b>	MER	<b>Wildpoint Rejection Threshold</b>	2.60	<b>SemiMajorAxis(m)</b>	6378137.00	<b>Mode Of Computation</b>	grid
<b>Ellipsoid</b>	WGS_84		-sigma	<b>SemiMinorAxis(m)</b>	6356752.31	<b>Used Reference Type</b>	REFINSREF
<b>Datum</b>	WGS_84	<b>Unit</b>	pixels	<b>Standardparallel1(deg)</b>	17.0		
<b>Zone</b>	Not Applicable			<b>Standardparallel2(deg)</b>	17.0		

\* -999.99 : Not Applicable/Not Available

## References

**JobId : 3DIMG30AUG20180600L1BSTD**

(-999.99 - Not Available/Not Computed)

Ref.No	Source	File Name	Resolution ( m )	Projection
1	ETM	world_Band1.img	500.0	GGP

## Location Accuracy

### GCP Distribution Statistics

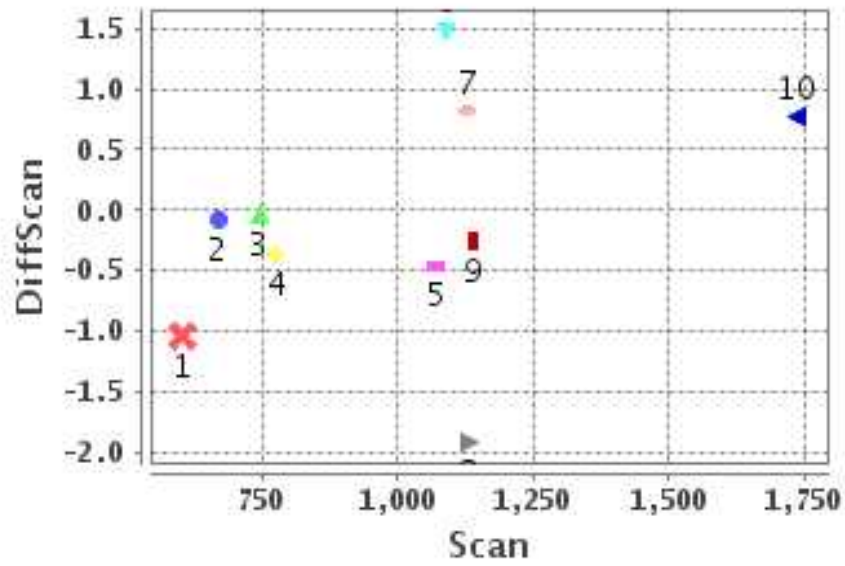
Image Width (pixels) : 2805      Image Height (pixels) : 2816      No of GCPs : 10

	Mean	StdDev	Min	Max	Coverage(in %)
<b>GCP Scan</b>	1008.2	314.6	601.2	1734.50	40.24 (N-S)
<b>GCP Pix</b>	896.0	354.0	579.8	1562.50	35.04 (E-W)

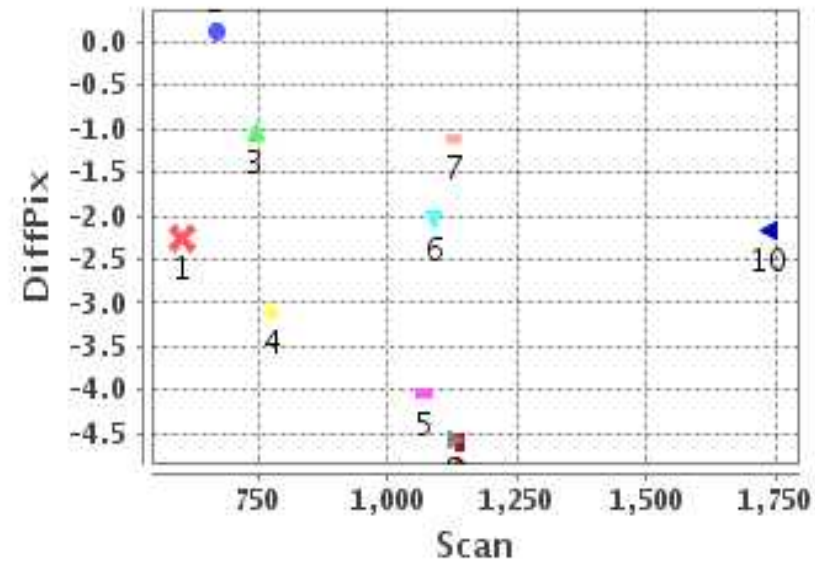
### Identified Control Point details : ( Differences are Reference - Product )

No	Scan	Pix	DiffScan (line)	DiffPix (pixel)	DifLat (Km)	Dir	DifLon (Km)	Dir	Status
1	668.8	663.2	-0.1	0.13	4.655	S	3.936	E	Accepted
2	774.8	685.5	-0.4	-3.11	0.838	S	13.624	W	Accepted
3	744.2	823.2	-0.0	-1.03	1.379	S	3.685	W	Accepted
4	1090.2	624.8	1.5	-2.05	7.195	S	5.730	W	Accepted
5	1070.5	687.5	-0.5	-4.04	0.516	N	16.940	W	Accepted
6	1128.8	628.5	0.8	-1.11	5.686	S	1.571	W	Accepted
7	1734.5	579.8	0.8	-2.18	5.478	S	7.977	W	Accepted
8	1129.5	1347.5	-1.9	-4.56	6.053	N	16.231	W	Accepted
9	1139.2	1357.5	-0.3	-4.59	0.586	N	16.374	W	Accepted
10	601.2	1562.5	-1.0	-2.26	4.388	N	8.535	W	Accepted

### Error(Pixels) Vs. GCPScan



### Error(Pixels) Vs. GCPScan



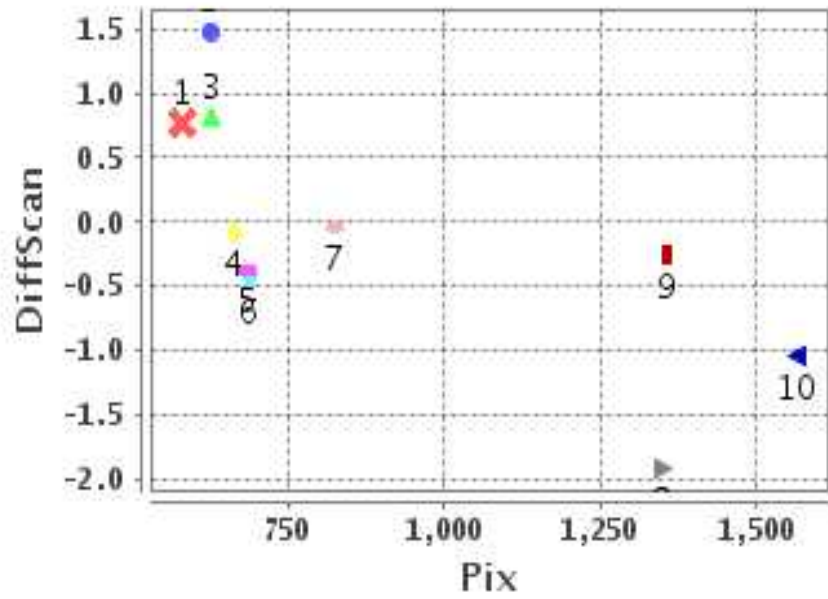
#### Number Of Points

North	4
South	6
East	1
West	9

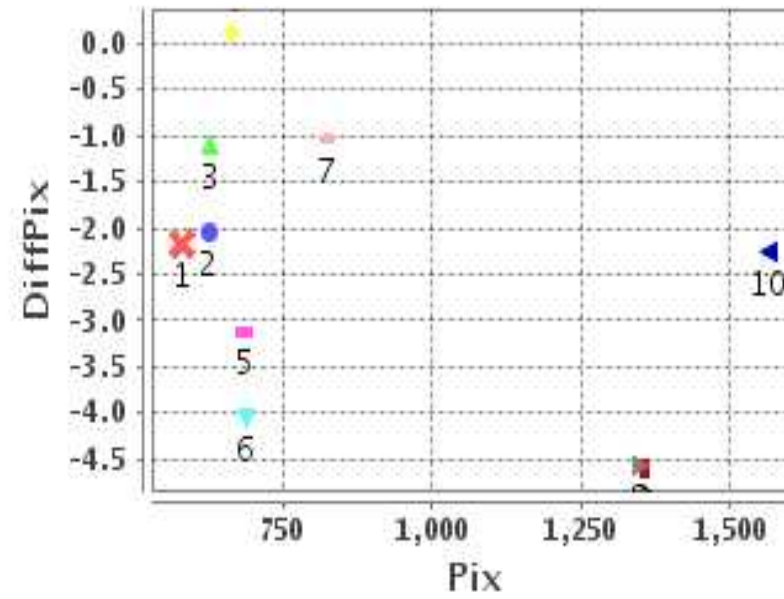
#### Radial Error ( Km )

Mean	2.718
Min	.984
Max	4.331
CE90	4.237

### Error(Pixels) Vs. GCPPix



### Error(Pixels) Vs. GCPPix



#### Location Accuracy

	Mean	StdDev	RMS	Dir	* MinRMS	* MaxRMS
Along( Km )	-0.342	1.049	1.104	S	0.997	1.163
Across ( Km )	-2.168	1.682	2.744	W	2.525	2.890

## Block-Wise Geo location Error Statistics

### Location Accuracy,Scale,ID

<b>Scan Range-0-937; Pix Range-0-934</b>			
Number of GCPs	3		
<b>Location Error(Km)</b>			
Along(Mean,Dir)	-2.29333	S	
Across(Mean,Dir)	-4.46	W	
<b>Scale(Km)</b>			
Average Scale (Mean,%Variation)	5.74	43.60	
<b>Internal Distortion(Pixel)</b>			
Along(Mean,Stddev)	0.14	0.16	
Across(Mean,Stddev)	2.20	1.04	

<b>Scan Range-0-937; Pix Range-934-1869</b>			
Number of GCPs	1		
<b>Location Error(Km)</b>			
Along(Mean,Dir)	4.39	N	
Across(Mean,Dir)	-8.54	W	
<b>Scale(Km)</b>			
Average Scale (Mean,%Variation)	-999.99	-999.9	
<b>Internal Distortion(Pixel)</b>			
Along(Mean,Stddev)	-999.99	-999.99	
Across(Mean,Stddev)	-999.99	-999.99	

<b>Scan Range-0-937; Pix Range-1869-2805</b>			
Number of GCPs	-999		
<b>Location Error(Km)</b>			
Along(Mean,Dir)	-999.99	NotAvail	
Across(Mean,Dir)	-999.99	NotAvail	
<b>Scale(Km)</b>			
Average Scale (Mean,%Variation)	-999.99	-999.9	
<b>Internal Distortion(Pixel)</b>			
Along(Mean,Stddev)	-999.99	-999.99	
Across(Mean,Stddev)	-999.99	-999.99	

<b>Scan Range-937-1876; Pix Range-0-934</b>			
Number of GCPs	4		
<b>Location Error(Km)</b>			
Along(Mean,Dir)	-4.46	S	
Across(Mean,Dir)	-8.06	W	
<b>Scale(Km)</b>			
Average Scale (Mean,%Variation)	4.17	4.14	
<b>Internal Distortion(Pixel)</b>			
Along(Mean,Stddev)	-1.48	0.33	
Across(Mean,Stddev)	0.22	1.22	

<b>Scan Range-937-1876; Pix Range-934-1869</b>			
Number of GCPs	2		
<b>Location Error(Km)</b>			
Along(Mean,Dir)	3.32	N	
Across(Mean,Dir)	-16.30	W	
<b>Scale(Km)</b>			
Average Scale (Mean,%Variation)	4.29	7.18	
<b>Internal Distortion(Pixel)</b>			
Along(Mean,Stddev)	-1.65	0.00	
Across(Mean,Stddev)	0.03	0.00	

<b>Scan Range-937-1876; Pix Range-1869-2805</b>			
Number of GCPs	-999		
<b>Location Error(Km)</b>			
Along(Mean,Dir)	-999.99	NotAvail	
Across(Mean,Dir)	-999.99	NotAvail	
<b>Scale(Km)</b>			
Average Scale (Mean,%Variation)	-999.99	-999.9	
<b>Internal Distortion(Pixel)</b>			
Along(Mean,Stddev)	-999.99	-999.99	
Across(Mean,Stddev)	-999.99	-999.99	

<b>Scan Range-1876-2816; Pix Range-0-934</b>			
Number of GCPs	-999		
<b>Location Error(Km)</b>			
Along(Mean,Dir)	-999.99	NotAvail	
Across(Mean,Dir)	-999.99	NotAvail	
<b>Scale(Km)</b>			
Average Scale (Mean,%Variation)	-999.99	-999.9	
<b>Internal Distortion(Pixel)</b>			
Along(Mean,Stddev)	-999.99	-999.99	
Across(Mean,Stddev)	-999.99	-999.99	

<b>Scan Range-1876-2816; Pix Range-937-1869</b>			
Number of GCPs	-999		
<b>Location Error(Km)</b>			
Along(Mean,Dir)	-999.99	NotAvail	
Across(Mean,Dir)	-999.99	NotAvail	
<b>Scale(Km)</b>			
Average Scale (Mean,%Variation)	-999.99	-999.9	
<b>Internal Distortion(Pixel)</b>			
Along(Mean,Stddev)	-999.99	-999.99	
Across(Mean,Stddev)	-999.99	-999.99	

<b>Scan Range-1876-2816; Pix Range-1869-2805</b>			
Number of GCPs	-999		
<b>Location Error(Km)</b>			
Along(Mean,Dir)	-999.99	NotAvail	
Across(Mean,Dir)	-999.99	NotAvail	
<b>Scale(Km)</b>			
Average Scale (Mean,%Variation)	-999.99	-999.9	
<b>Internal Distortion(Pixel)</b>			
Along(Mean,Stddev)	-999.99	-999.99	
Across(Mean,Stddev)	-999.99	-999.99	

\*-999 : no gcp available

\* -999.99 : values are not computed