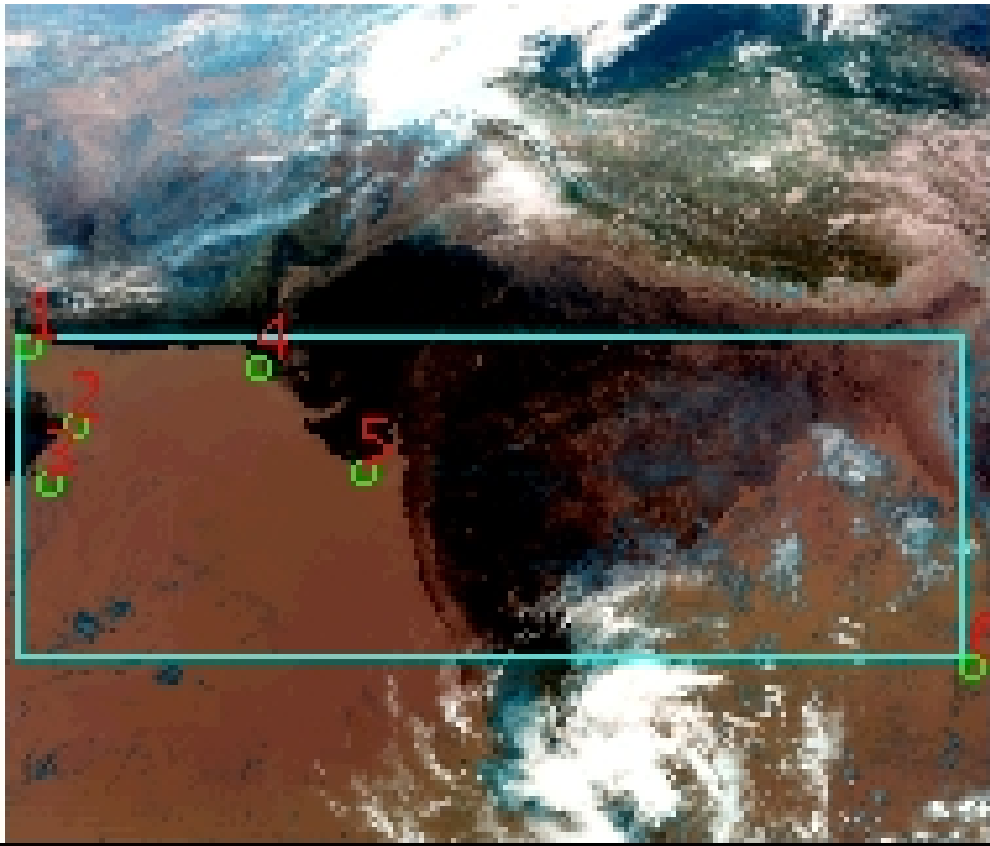


# DQE Report: Location Accuracy of INSAT-3DR-SND STANDARD Product 3RSND\_01NOV2018\_0500

**Satellite** INSAT-3DR      **No Of Bands** 19      **Product Type** STANDARD  
**Sensor** SND              **LvlOfProcess** L1B      **Selected Band** 2-LWIR3  
**DOP/Time** 01-11-18/05:00      **Station ID** BES      **Field View(deg)** 6.136  
**Res(Y,X) [Km]** (10.0,10.0)      **Res(Y,X) [uRad]** (280.0,280.0)

(41.428N,51.901W)

(41.428N,102.074E)



(6.97S,51.901W)

(6.97S,102.074E)

GCP Distribution overview for 3RSND01NOV20180500L1BSA1

**Image Width:** 384      **Image Height:** 320      **No Of GCPs:** 6

**GCP Coverage(%)**      37.89      **(N-S)** 93.88      **(E-W)**

## Location Error(E)

**Legend**      — 0Km < E <= 50Km      — 50Km < E <= 100Km      — E >100Km

## Location Error (In IR Pixels)

	Mean	Direction	Stddev	RMS
Along	0.352	N	0.644	0.734
Across	-1.686	W	0.255	1.705

## Scale (Km)

	Pixel Size	Stddev	%variation
Average	10.911	0.649	9.106
Along	13.972	5.027	39.724
Across	10.067	1.921	0.668

## Internal Distortion (in IR Pixels)

	PeakToPeak	Mean	Stddev	RMS
Along	1.598	0.267	0.59	0.645
Across	0.776	0.594	0.26	0.649

## Attitude Residuals (Deg)

Pitch	Roll	Yaw
-0.02557	-0.00182	-0.13772

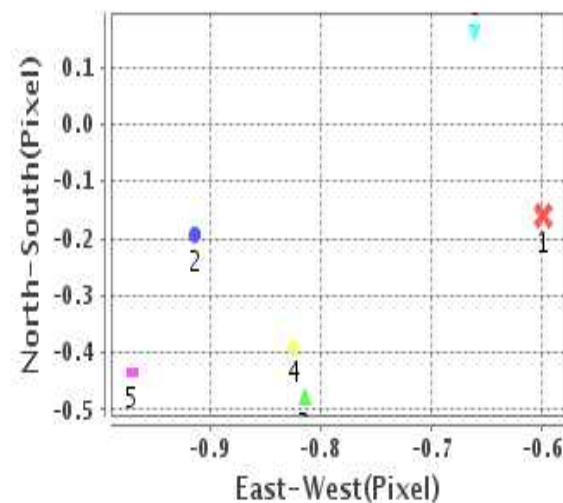
## Reference Used

Sensor	Resolution	Projection
ETM	500.00	GGP

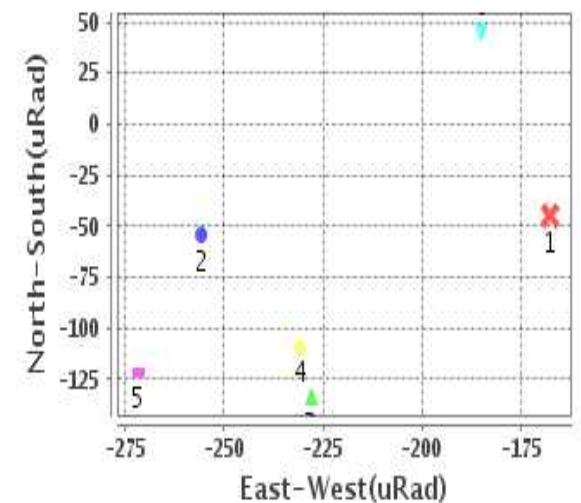
## Radial Error (in IR Pixels)

<b>Mean</b>	1.832
<b>Min</b>	1.485
<b>Max</b>	2.230
<b>CE90</b>	2.152

## Location Error For GCPs(Pixel)



## Location Error For GCPs(uRad)



## Detailed Product Information

### Ancillary Info

<b>Satellite</b>	INSAT-3DR	<b>Generation Date</b>	01-11-18
<b>Sensor</b>	SND	<b>DQE Date</b>	02-11-2018
<b>PassType</b>	NONE	<b>Aquisition Date</b>	01-11-18
<b>Imaging Mode</b>	FULL_FRAME	<b>Aquisition Time(GMT)</b>	05:00
<b>Sat Altitude(m)</b>	3.6E7	<b>Nominal Altitude(Km)</b>	3.6E7
<b>Station</b>	BES	<b>Predicted Altitude(Km)</b>	-999.99
<b>Sat Location(deg)</b>	-999.99 E	<b>Nominal Center Lat(deg)</b>	0.0
<b>Format</b>	hdf5-1.8.8	<b>Nominal Center Lon(deg)</b>	74.0
<b>LvlOfProcessing</b>	STANDARD	<b>Predicted Center Lat(deg)</b>	-999.99
<b>DP JobId</b>	3RSND_01NOV2	<b>Predicted Center Lon(deg)</b>	-999.99
<b>ProductCode</b>	NONE		
<b>Field View(deg)</b>	6.136		

### Projection Parameters

<b>Projection</b>	None
<b>Ellipsoid</b>	WGS_84
<b>Datum</b>	WGS_84
<b>Zone</b>	NotAvail
<b>Semi_Major_Axis(Km)</b>	6378.14
<b>Semi_Minor_Axis(Km)</b>	6356.75
<b>Standard_Parallel1(deg)</b>	-999.99
<b>Standard_Parallel2(deg)</b>	-999.99
<b>Projection_Origin_Lon(deg)</b>	-999.99
<b>Projection_Origin_Lat(deg)</b>	-999.99
<b>Projection_False_Easting(Km)</b>	-999.99
<b>Projection_False_Northing(Km)</b>	-999.99

### Scene Center Desc

<b>Centre Lat(deg)</b>	24.199
<b>Center Lon(deg)</b>	76.988
<b>Centre Roll(deg)</b>	-999.0
<b>Centre Pitch(deg)</b>	-999.0
<b>Center Yaw(deg)</b>	-999.0
<b>SunElevation(deg)</b>	-999.99
<b>SunAzimuth(deg)</b>	-999.99
<b>SatElevation(deg)</b>	-999.99
<b>SatAzimuth(deg)</b>	-999.99

### Scene Corner Desc

<b>NW_Lat(deg)</b>	41.428
<b>NW_Lon(deg)</b>	51.901
<b>SW_Lat(deg)</b>	6.97
<b>SW_Lon(deg)</b>	51.901
<b>NE_Lat(deg)</b>	41.428
<b>NE_Lon(deg)</b>	102.074
<b>SE_Lat(deg)</b>	6.97
<b>SE_Lon(deg)</b>	102.074

### Band Wise Details

	Res_AL(Km)	Res_AX(Km)	Image Height	Image Width
<b>LWIR1</b>	10.0	10.0	320	384
<b>LWIR2</b>	10.0	10.0	320	384
<b>LWIR3</b>	10.0	10.0	320	384
<b>LWIR4</b>	10.0	10.0	320	384
<b>LWIR5</b>	10.0	10.0	320	384
<b>LWIR6</b>	10.0	10.0	320	384

## GDQE Computation Base

<b>Projection</b>	MER	<b>Wildpoint Rejection Threshold</b>	2.60	<b>SemiMajorAxis(m)</b>	6378137.00	<b>Mode Of Computation</b>	grid
<b>Ellipsoid</b>	WGS_84		-sigma	<b>SemiMinorAxis(m)</b>	6356752.31	<b>Used Reference Type</b>	REFINSREF
<b>Datum</b>	WGS_84	<b>Unit</b>	pixels	<b>Standardparallel1(deg)</b>	17.0		
<b>Zone</b>	Not Applicable			<b>Standardparallel2(deg)</b>	17.0		

\* -999.99 : Not Applicable/Not Available

## References

**JobId : 3RSND01NOV20180500L1BSA1**

(-999.99 - Not Available/Not Computed)

Ref.No	Source	File Name	Resolution ( m )	Projection
1	ETM	world_Band1.img	500.0	GGP

## Location Accuracy

### GCP Distribution Statistics

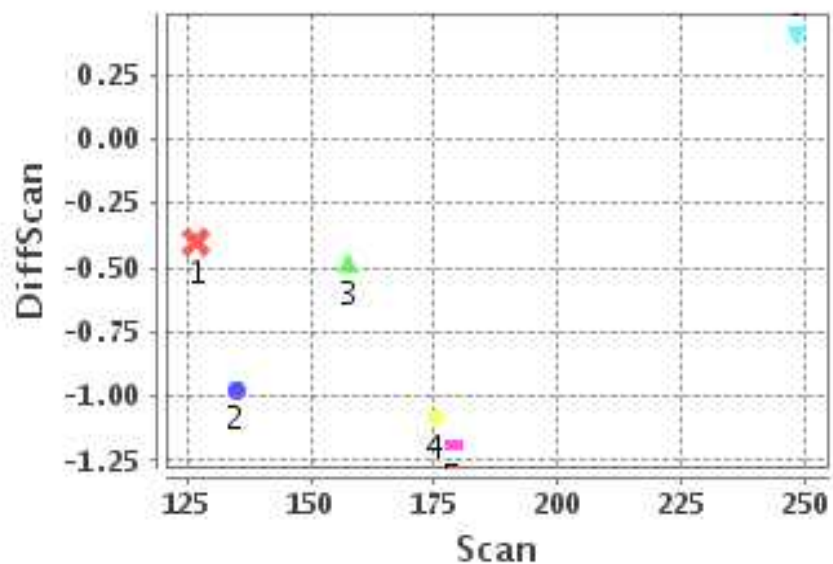
Image Width (pixels) : 384      Image Height (pixels) : 320      No of GCPs : 6

	Mean	StdDev	Min	Max	Coverage(in %)
<b>GCP Scan</b>	170.3	39.7	127.0	248.25	37.89 (N-S)
<b>GCP Pix</b>	113.2	124.9	12.0	372.50	93.88 (E-W)

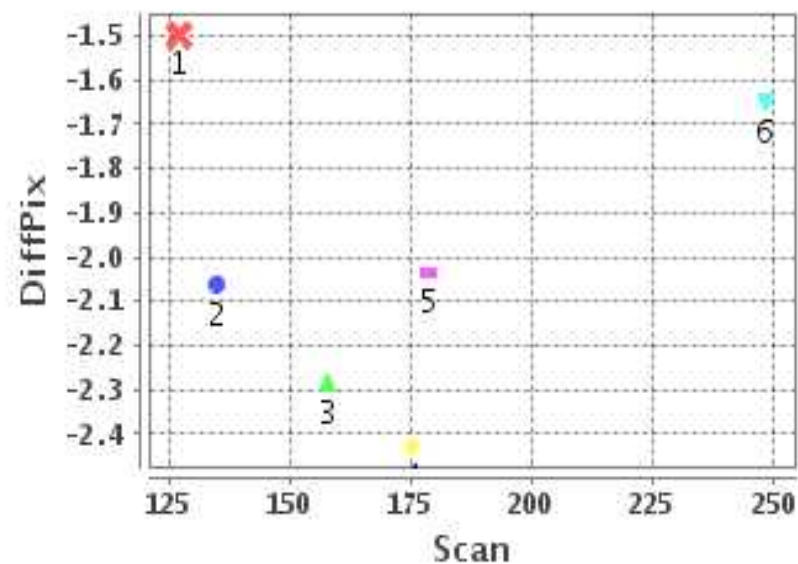
### Identified Control Point details : ( Differences are Reference - Product )

No	Scan	Pix	DiffScan (line)	DiffPix (pixel)	DifLat (Km)	Dir	DifLon (Km)	Dir	Status
1	127.0	12.0	-0.4	-1.50	5.187	N	19.036	W	Accepted
2	157.8	31.8	-0.5	-2.28	2.985	S	16.042	W	Accepted
3	178.8	20.8	-1.2	-2.04	5.003	N	14.333	W	Accepted
4	135.0	100.5	-1.0	-2.06	11.507	N	18.180	W	Accepted
5	175.2	141.5	-1.1	-2.43	9.159	N	20.335	W	Accepted
6	248.2	372.5	0.4	-1.65	6.781	S	13.216	W	Accepted

### Error(Pixels) Vs. GCPScan



### Error(Pixels) Vs. GCPScan



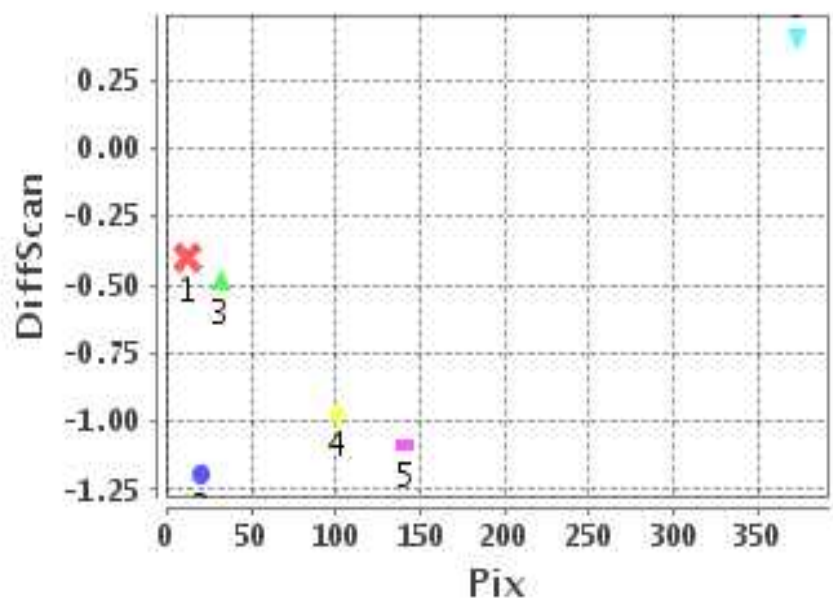
#### Number Of Points

North	4
South	2
East	0
West	6

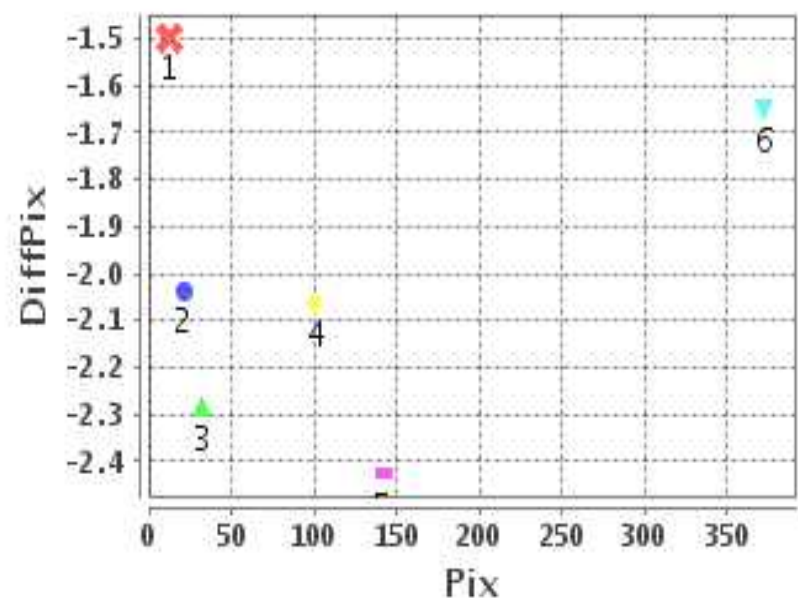
#### Radial Error ( Km )

Mean	1.832
Min	1.485
Max	2.230
CE90	2.152

### Error(Pixels) Vs. GCPPix



### Error(Pixels) Vs. GCPPix



#### Location Accuracy

	Mean	StdDev	RMS	Dir	* MinRMS	* MaxRMS
Along( Km )	0.352	0.644	0.734	N	0.618	0.793
Across ( Km )	-1.686	0.255	1.705	W	1.631	1.772

## Block-Wise Geo location Error Statistics

### Location Accuracy,Scale,ID

<b>Scan Range-0-105; Pix Range-0-127</b>		
Number of GCPs	-999	
<b>Location Error(Km)</b>		
Along(Mean,Dir)	-999.99	NotAvail
Across(Mean,Dir)	-999.99	NotAvail
<b>Scale(Km)</b>		
Average Scale (Mean,%Variation)	-999.99	-999.9
<b>Internal Distortion(Pixel)</b>		
Along(Mean,Stddev)	-999.99	-999.99
Across(Mean,Stddev)	-999.99	-999.99

<b>Scan Range-0-105; Pix Range-127-255</b>		
Number of GCPs	-999	
<b>Location Error(Km)</b>		
Along(Mean,Dir)	-999.99	NotAvail
Across(Mean,Dir)	-999.99	NotAvail
<b>Scale(Km)</b>		
Average Scale (Mean,%Variation)	-999.99	-999.9
<b>Internal Distortion(Pixel)</b>		
Along(Mean,Stddev)	-999.99	-999.99
Across(Mean,Stddev)	-999.99	-999.99

<b>Scan Range-0-105; Pix Range-255-384</b>		
Number of GCPs	-999	
<b>Location Error(Km)</b>		
Along(Mean,Dir)	-999.99	NotAvail
Across(Mean,Dir)	-999.99	NotAvail
<b>Scale(Km)</b>		
Average Scale (Mean,%Variation)	-999.99	-999.9
<b>Internal Distortion(Pixel)</b>		
Along(Mean,Stddev)	-999.99	-999.99
Across(Mean,Stddev)	-999.99	-999.99

<b>Scan Range-105-212; Pix Range-0-127</b>		
Number of GCPs	4	
<b>Location Error(Km)</b>		
Along(Mean,Dir)	4.6775	N
Across(Mean,Dir)	-16.90	W
<b>Scale(Km)</b>		
Average Scale (Mean,%Variation)	11.27	12.75
<b>Internal Distortion(Pixel)</b>		
Along(Mean,Stddev)	0.48	0.30
Across(Mean,Stddev)	0.63	0.11

<b>Scan Range-105-212; Pix Range-127-255</b>		
Number of GCPs	1	
<b>Location Error(Km)</b>		
Along(Mean,Dir)	9.16	N
Across(Mean,Dir)	-20.34	W
<b>Scale(Km)</b>		
Average Scale (Mean,%Variation)	-999.99	-999.9
<b>Internal Distortion(Pixel)</b>		
Along(Mean,Stddev)	-999.99	-999.99
Across(Mean,Stddev)	-999.99	-999.99

<b>Scan Range-105-212; Pix Range-255-384</b>		
Number of GCPs	-999	
<b>Location Error(Km)</b>		
Along(Mean,Dir)	-999.99	NotAvail
Across(Mean,Dir)	-999.99	NotAvail
<b>Scale(Km)</b>		
Average Scale (Mean,%Variation)	-999.99	-999.9
<b>Internal Distortion(Pixel)</b>		
Along(Mean,Stddev)	-999.99	-999.99
Across(Mean,Stddev)	-999.99	-999.99

<b>Scan Range-212-320; Pix Range-0-127</b>		
Number of GCPs	-999	
<b>Location Error(Km)</b>		
Along(Mean,Dir)	-999.99	NotAvail
Across(Mean,Dir)	-999.99	NotAvail
<b>Scale(Km)</b>		
Average Scale (Mean,%Variation)	-999.99	-999.9
<b>Internal Distortion(Pixel)</b>		
Along(Mean,Stddev)	-999.99	-999.99
Across(Mean,Stddev)	-999.99	-999.99

<b>Scan Range-212-320; Pix Range-105-255</b>		
Number of GCPs	-999	
<b>Location Error(Km)</b>		
Along(Mean,Dir)	-999.99	NotAvail
Across(Mean,Dir)	-999.99	NotAvail
<b>Scale(Km)</b>		
Average Scale (Mean,%Variation)	-999.99	-999.9
<b>Internal Distortion(Pixel)</b>		
Along(Mean,Stddev)	-999.99	-999.99
Across(Mean,Stddev)	-999.99	-999.99

<b>Scan Range-212-320; Pix Range-255-384</b>		
Number of GCPs	1	
<b>Location Error(Km)</b>		
Along(Mean,Dir)	-6.78	S
Across(Mean,Dir)	-13.22	W
<b>Scale(Km)</b>		
Average Scale (Mean,%Variation)	-999.99	-999.9
<b>Internal Distortion(Pixel)</b>		
Along(Mean,Stddev)	-999.99	-999.99
Across(Mean,Stddev)	-999.99	-999.99

\*-999 : no gcp available

\* -999.99 : values are not computed