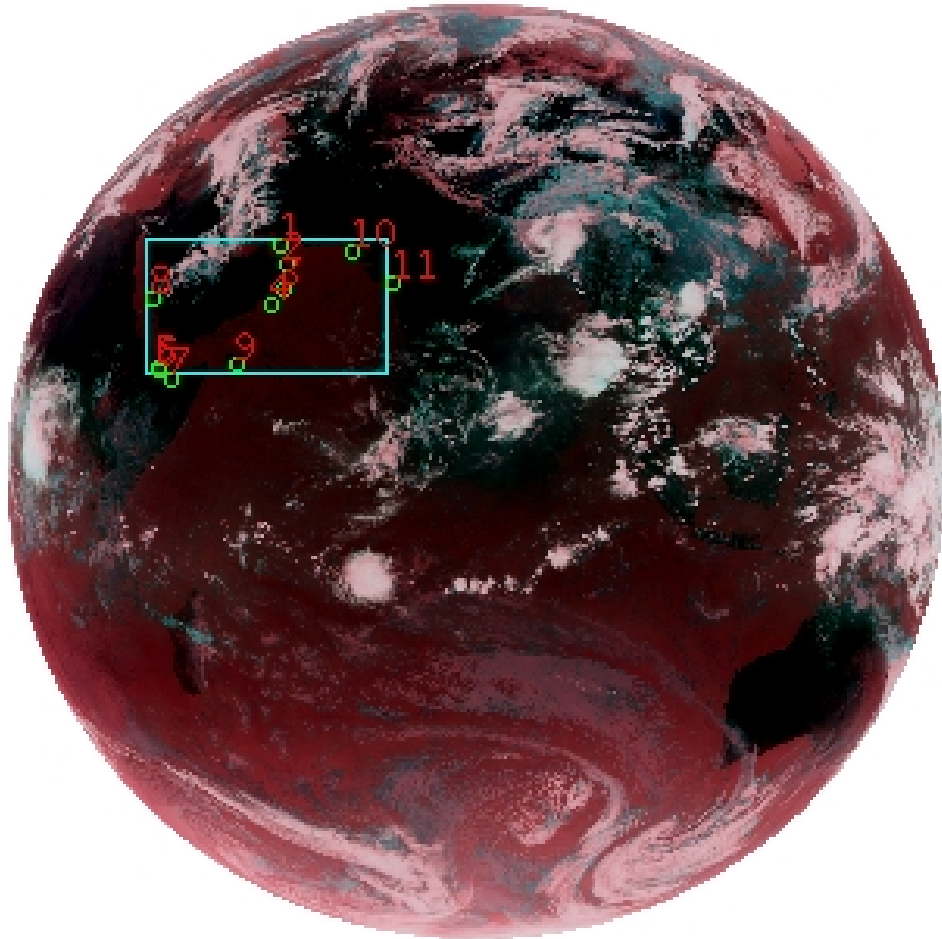


# DQE Report: Location Accuracy of INSAT-3D-IMG STANDARD(FULL DISK) Product 3DIMG\_04MAY2019\_0600

**Satellite** INSAT-3D      **No Of Bands** 6      **Product Type** STANDARD  
**Sensor** IMG      **LvlOfProcess** L1B      **Selected Band** 2-TIR1  
**DOP/Time** 04-05-19/06:00      **Station ID** BES      **Field View(deg)** 17.974  
**Res(Y,X) [Km]** (4.0,4.0)      **Res(Y,X) [uRad]** (112.0,112.0)

(81.042N,0.843W)

(81.042N,163.157E)



(-81.042S,0.843W)

(-81.042S,163.157E)

GCP Distribution overview for 3DIMG04MAY20190600L1BSTD

**Image Width:** 2805      **Image Height:** 2816      **No Of GCPs:** 11

**GCP Coverage(%)**      13.64      **(N-S)** 24.84      **(E-W)**

## Location Error(E)

**Legend**      — 0Km < E <= 50Km      — 50Km < E <= 100Km      — E >100Km

## Location Error (In IR Pixels)

	Mean	Direction	Stddev	RMS
Along	0.380	N	0.770	0.858
Across	-2.443	W	1.845	3.061

## Scale (Km)

	Pixel Size	Stddev	%variation
Average	4.685	0.441	17.117
Along	5.754	8.552	43.840
Across	4.850	0.809	21.253

## Internal Distortion (in IR Pixels)

	PeakToPeak	Mean	Stddev	RMS
Along	2.620	0.648	0.74	0.986
Across	5.417	1.986	1.66	2.587

## Attitude Residuals (Deg)

Pitch	Roll	Yaw
-0.02220	-0.01316	0.12890

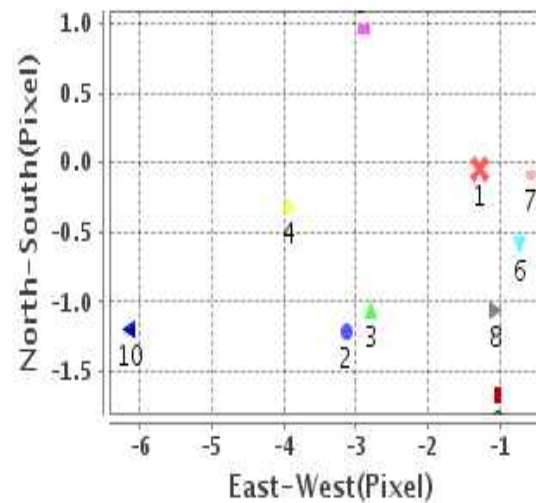
## Reference Used

Sensor	Resolution	Projection
ETM	500.00	GGP

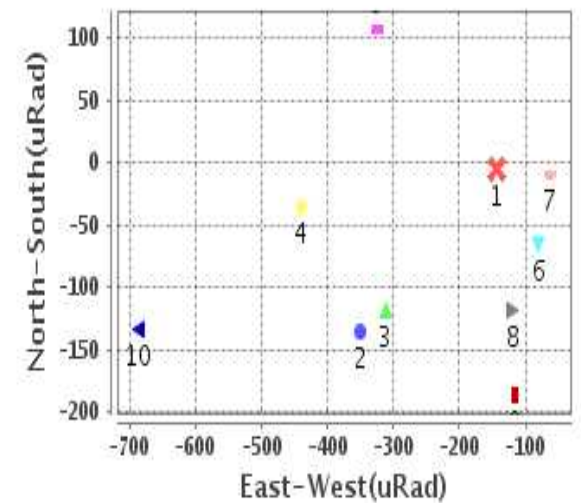
## Radial Error (in IR Pixels)

<b>Mean</b>	2.655
<b>Min</b>	.756
<b>Max</b>	5.894
<b>CE90</b>	4.678

## Location Error For GCPs(Pixel)



## Location Error For GCPs(uRad)



## Detailed Product Information

### Ancillary Info

<b>Satellite</b>	INSAT-3D	<b>Generation Date</b>	04-05-19
<b>Sensor</b>	IMG	<b>DQE Date</b>	06-05-2019
<b>PassType</b>	NONE	<b>Aquisition Date</b>	04-05-19
<b>Imaging Mode</b>	FULL_FRAME	<b>Aquisition Time(GMT)</b>	06:00
<b>Sat Altitude(m)</b>	3.6E7	<b>Nominal Altitude(Km)</b>	3.6E7
<b>Station</b>	BES	<b>Predicted Altitude(Km)</b>	-999.99
<b>Sat Location(deg)</b>	-999.99 E	<b>Nominal Center Lat(deg)</b>	0.0
<b>Format</b>	hdf5-1.8.8	<b>Nominal Center Lon(deg)</b>	82.0
<b>LvlOfProcessing</b>	STANDARD(FULL)	<b>Predicted Center Lat(deg)</b>	-999.99
<b>DP JobId</b>	3DIMG_04MAY2	<b>Predicted Center Lon(deg)</b>	-999.99
<b>ProductCode</b>	NONE		
<b>Field View(deg)</b>	17.974		

### Projection Parameters

<b>Projection</b>	None
<b>Ellipsoid</b>	WGS_84
<b>Datum</b>	WGS_84
<b>Zone</b>	NotAvail
<b>Semi_Major_Axis(Km)</b>	6378.14
<b>Semi_Minor_Axis(Km)</b>	6356.75
<b>Standard_Parallel1(deg)</b>	-999.99
<b>Standard_Parallel2(deg)</b>	-999.99
<b>Projection_Origin_Lon(deg)</b>	-999.99
<b>Projection_Origin_Lat(deg)</b>	-999.99
<b>Projection_False_Easting(Km)</b>	-999.99
<b>Projection_False_Northing(Km)</b>	-999.99

### Scene Center Desc

<b>Centre Lat(deg)</b>	0.0
<b>Center Lon(deg)</b>	82.0
<b>Centre Roll(deg)</b>	-999.0
<b>Centre Pitch(deg)</b>	-999.0
<b>Center Yaw(deg)</b>	-999.0
<b>SunElevation(deg)</b>	-999.99
<b>SunAzimuth(deg)</b>	-999.99
<b>SatElevation(deg)</b>	-999.99
<b>SatAzimuth(deg)</b>	-999.99

### Scene Corner Desc

<b>NW_Lat(deg)</b>	81.042
<b>NW_Lon(deg)</b>	0.843
<b>SW_Lat(deg)</b>	-81.042
<b>SW_Lon(deg)</b>	0.843
<b>NE_Lat(deg)</b>	81.042
<b>NE_Lon(deg)</b>	163.157
<b>SE_Lat(deg)</b>	-81.042
<b>SE_Lon(deg)</b>	163.157

### Band Wise Details

	Res_AL(Km)	Res_AX(Km)	Image Height	Image Width
<b>MIR</b>	4.0	4.0	2816	2805
<b>SWIR</b>	1.0	1.0	11264	11220
<b>TIR1</b>	4.0	4.0	2816	2805
<b>TIR2</b>	4.0	4.0	2816	2805
<b>VIS</b>	1.0	1.0	11264	11220
<b>WV</b>	8.0	8.0	1408	1402

## GDQE Computation Base

<b>Projection</b>	MER	<b>Wildpoint Rejection Threshold</b>	2.60	<b>SemiMajorAxis(m)</b>	6378137.00	<b>Mode Of Computation</b>	grid
<b>Ellipsoid</b>	WGS_84		-sigma	<b>SemiMinorAxis(m)</b>	6356752.31	<b>Used Reference Type</b>	REFINSREF
<b>Datum</b>	WGS_84	<b>Unit</b>	meters	<b>Standardparallel1(deg)</b>	17.0		
<b>Zone</b>	Not Applicable			<b>Standardparallel2(deg)</b>	17.0		

\* -999.99 : Not Applicable/Not Available

## References

**JobId : 3DIMG04MAY20190600L1BSTD**

(-999.99 - Not Available/Not Computed)

Ref.No	Source	File Name	Resolution ( m )	Projection
1	ETM	world_Band1.img	500.0	GGP

## Location Accuracy

### GCP Distribution Statistics

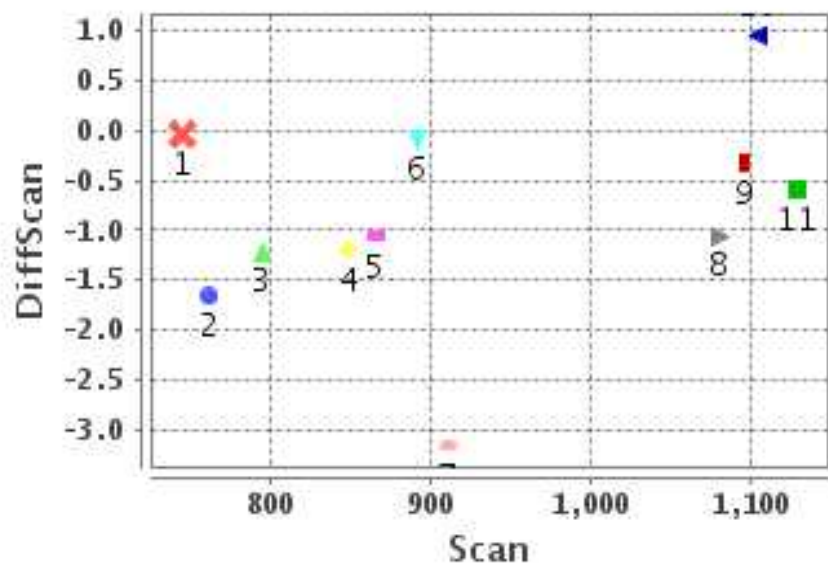
Image Width (pixels) : 2805      Image Height (pixels) : 2816      No of GCPs : 11

	Mean	StdDev	Min	Max	Coverage(in %)
<b>GCP Scan</b>	929.5	139.3	744.2	1128.25	13.64 (N-S)
<b>GCP Pix</b>	734.2	226.4	455.0	1151.75	24.84 (E-W)

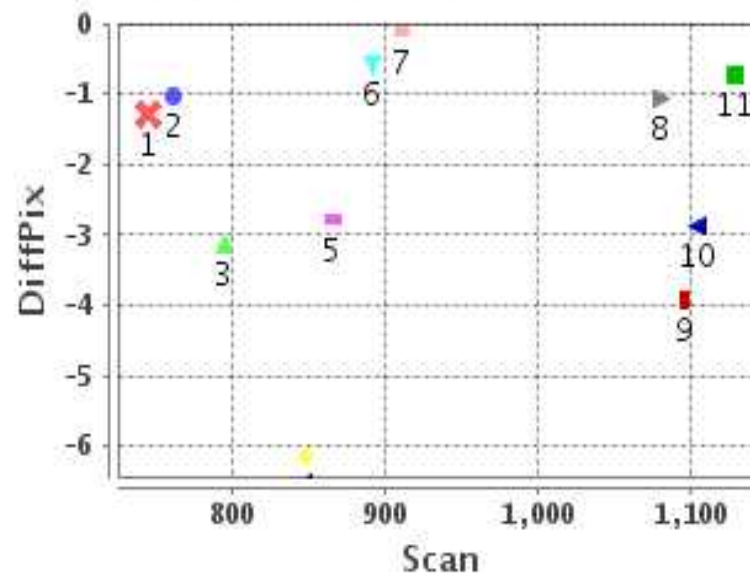
### Identified Control Point details : ( Differences are Reference - Product )

No	Scan	Pix	DiffScan (line)	DiffPix (pixel)	DifLat (Km)	Dir	DifLon (Km)	Dir	Status
1	744.2	823.5	-0.0	-1.28	1.379	S	3.685	W	Accepted
2	794.8	840.5	-1.2	-3.13	3.064	N	13.656	W	Accepted
3	865.5	834.2	-1.1	-2.78	2.560	N	12.202	W	Accepted
4	910.5	800.2	-3.2	-0.11	11.895	N	1.613	W	Rejected
5	1095.2	475.8	-0.3	-3.93	0.601	N	18.702	W	Accepted
6	1104.2	469.0	1.0	-2.89	4.127	S	15.634	W	Accepted
7	1128.2	504.2	-0.6	-0.72	0.950	N	2.870	W	Accepted
8	891.5	455.0	-0.1	-0.56	1.540	S	2.723	W	Accepted
9	1080.2	694.5	-1.1	-1.06	3.491	N	3.110	W	Accepted
10	761.5	1027.8	-1.7	-1.03	6.113	N	2.207	W	Accepted
11	848.2	1151.8	-1.2	-6.14	5.454	N	22.938	W	Accepted

### Error(Pixels) Vs. GCPScan



### Error(Pixels) Vs. GCPScan



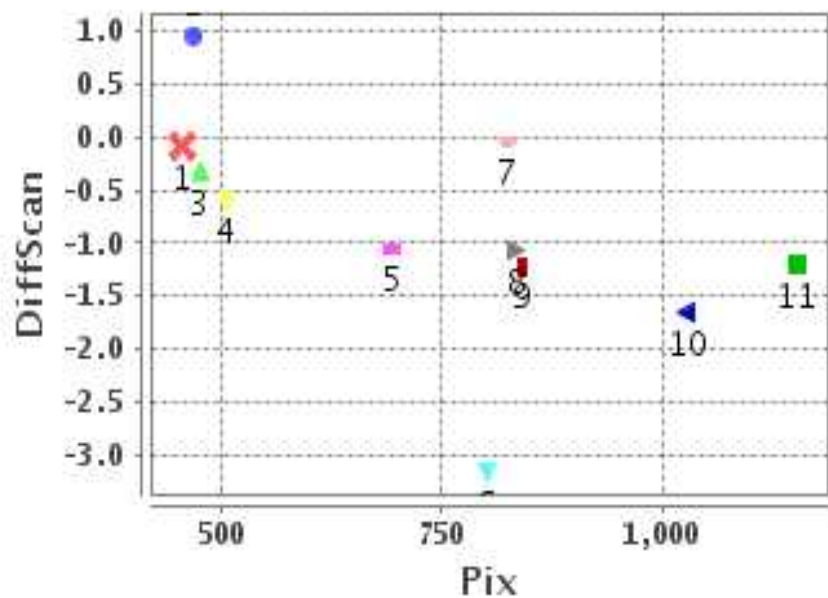
#### Number Of Points

North	7
South	3
East	0
West	10

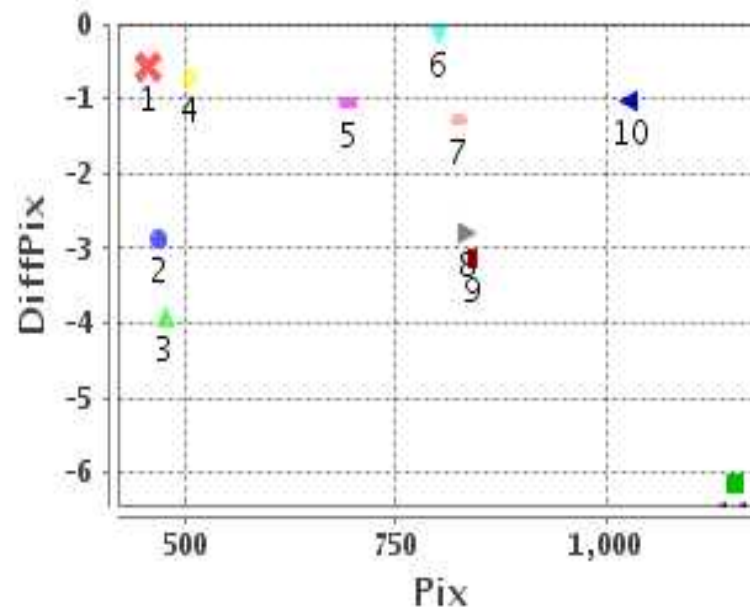
#### Radial Error ( Km )

Mean	2.655
Min	.756
Max	5.894
CE90	4.678

### Error(Pixels) Vs. GCPPix



### Error(Pixels) Vs. GCPPix



#### Location Accuracy

	Mean	StdDev	RMS	Dir	* MinRMS	* MaxRMS
Along( Km )	0.380	0.770	0.858	N	0.747	0.903
Across ( Km )	-2.443	1.845	3.061	W	2.600	3.222

## Block-Wise Geo location Error Statistics

### Location Accuracy,Scale,ID

<b>Scan Range-0-937; Pix Range-0-934</b>		
Number of GCPs	4	
<b>Location Error(Km)</b>		
Along(Mean,Dir)	0.675	N
Across(Mean,Dir)	-8.07	W
<b>Scale(Km)</b>		
Average Scale (Mean,%Variation)	5.07	26.84
<b>Internal Distortion(Pixel)</b>		
Along(Mean,Stddev)	0.74	0.50
Across(Mean,Stddev)	1.83	0.80

<b>Scan Range-0-937; Pix Range-934-1869</b>		
Number of GCPs	2	
<b>Location Error(Km)</b>		
Along(Mean,Dir)	5.79	N
Across(Mean,Dir)	-12.57	W
<b>Scale(Km)</b>		
Average Scale (Mean,%Variation)	4.68	17.04
<b>Internal Distortion(Pixel)</b>		
Along(Mean,Stddev)	-0.46	0.00
Across(Mean,Stddev)	5.11	0.00

<b>Scan Range-0-937; Pix Range-1869-2805</b>		
Number of GCPs	-999	
<b>Location Error(Km)</b>		
Along(Mean,Dir)	-999.99	NotAvail
Across(Mean,Dir)	-999.99	NotAvail
<b>Scale(Km)</b>		
Average Scale (Mean,%Variation)	-999.99	-999.9
<b>Internal Distortion(Pixel)</b>		
Along(Mean,Stddev)	-999.99	-999.99
Across(Mean,Stddev)	-999.99	-999.99

<b>Scan Range-937-1876; Pix Range-0-934</b>		
Number of GCPs	4	
<b>Location Error(Km)</b>		
Along(Mean,Dir)	0.23	N
Across(Mean,Dir)	-10.08	W
<b>Scale(Km)</b>		
Average Scale (Mean,%Variation)	5.21	30.35
<b>Internal Distortion(Pixel)</b>		
Along(Mean,Stddev)	-1.08	0.67
Across(Mean,Stddev)	-0.99	1.44

<b>Scan Range-937-1876; Pix Range-934-1869</b>		
Number of GCPs	-999	
<b>Location Error(Km)</b>		
Along(Mean,Dir)	-999.99	NotAvail
Across(Mean,Dir)	-999.99	NotAvail
<b>Scale(Km)</b>		
Average Scale (Mean,%Variation)	-999.99	-999.9
<b>Internal Distortion(Pixel)</b>		
Along(Mean,Stddev)	-999.99	-999.99
Across(Mean,Stddev)	-999.99	-999.99

<b>Scan Range-937-1876; Pix Range-1869-2805</b>		
Number of GCPs	-999	
<b>Location Error(Km)</b>		
Along(Mean,Dir)	-999.99	NotAvail
Across(Mean,Dir)	-999.99	NotAvail
<b>Scale(Km)</b>		
Average Scale (Mean,%Variation)	-999.99	-999.9
<b>Internal Distortion(Pixel)</b>		
Along(Mean,Stddev)	-999.99	-999.99
Across(Mean,Stddev)	-999.99	-999.99

<b>Scan Range-1876-2816; Pix Range-0-934</b>		
Number of GCPs	-999	
<b>Location Error(Km)</b>		
Along(Mean,Dir)	-999.99	NotAvail
Across(Mean,Dir)	-999.99	NotAvail
<b>Scale(Km)</b>		
Average Scale (Mean,%Variation)	-999.99	-999.9
<b>Internal Distortion(Pixel)</b>		
Along(Mean,Stddev)	-999.99	-999.99
Across(Mean,Stddev)	-999.99	-999.99

<b>Scan Range-1876-2816; Pix Range-937-1869</b>		
Number of GCPs	-999	
<b>Location Error(Km)</b>		
Along(Mean,Dir)	-999.99	NotAvail
Across(Mean,Dir)	-999.99	NotAvail
<b>Scale(Km)</b>		
Average Scale (Mean,%Variation)	-999.99	-999.9
<b>Internal Distortion(Pixel)</b>		
Along(Mean,Stddev)	-999.99	-999.99
Across(Mean,Stddev)	-999.99	-999.99

<b>Scan Range-1876-2816; Pix Range-1869-2805</b>		
Number of GCPs	-999	
<b>Location Error(Km)</b>		
Along(Mean,Dir)	-999.99	NotAvail
Across(Mean,Dir)	-999.99	NotAvail
<b>Scale(Km)</b>		
Average Scale (Mean,%Variation)	-999.99	-999.9
<b>Internal Distortion(Pixel)</b>		
Along(Mean,Stddev)	-999.99	-999.99
Across(Mean,Stddev)	-999.99	-999.99

\*-999 : no gcp available

\* -999.99 : values are not computed