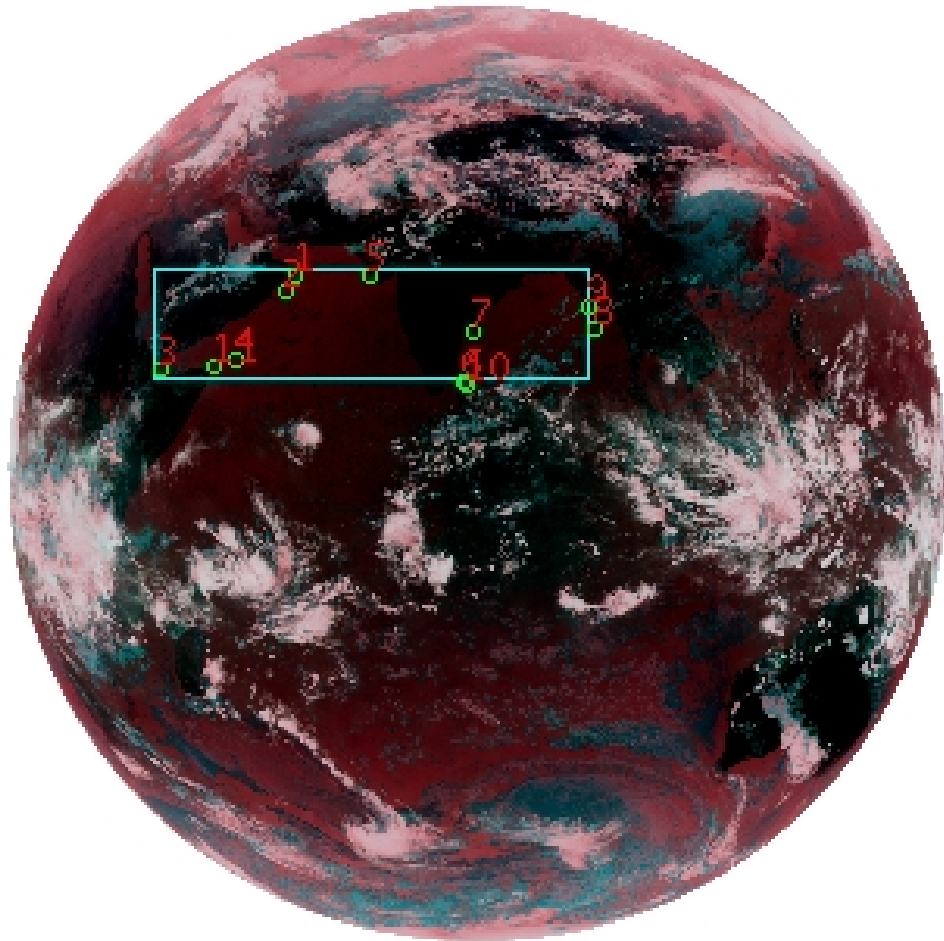


DQE Report: Location Accuracy of INSAT-3D-IMG STANDARD(FULL DISK) Product 3DIMG_01MAR2018_0600

Satellite INSAT-3D **No Of Bands** 6 **Product Type** STANDARD
Sensor IMG **LvlOfProcess** L1B **Selected Band** 2-TIR1
DOP/Time 01-03-18/06:00 **Station ID** BES **Field View(deg)** 17.974
Res(Y,X) [Km] (4.0,4.0) **Res(Y,X) [uRad]** (112.0,112.0)

(81.042N,0.843W)

(81.042N,163.157E)



(-81.042S,0.843W)

(-81.042S,163.157E)

GCP Distribution overview for 3DIMG01MAR20180600L1BSTD

Image Width: 2805 **Image Height:** 2816 **No Of GCPs:** 11

GCP Coverage(%) 11.11 **(N-S)** 44.52 **(E-W)**

Location Error(E)

Legend — 0Km < E <= 50Km — 50Km < E <= 100Km — E >100Km

Location Error (In IR Pixels)

	Mean	Direction	Stddev	RMS
Along	0.526	N	2.306	2.365
Across	-3.243	W	1.301	3.494

Scale (Km)

	Pixel Size	Stddev	%variation
Average	4.322	0.221	8.044
Along	4.396	0.121	9.906
Across	4.318	0.212	7.938

Internal Distortion (in IR Pixels)

	PeakToPeak	Mean	Stddev	RMS
Along	5.694	-3.108	2.09	3.744
Across	3.398	0.290	0.95	0.996

Attitude Residuals (Deg)

Pitch	Roll	Yaw
-0.01778	-0.00914	0.15585

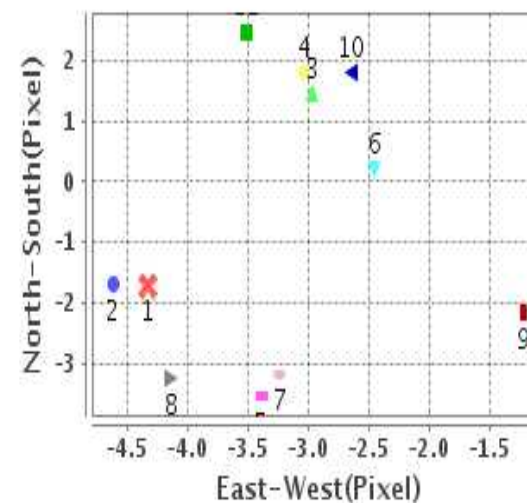
Reference Used

Sensor	Resolution	Projection
ETM	500.00	GGP

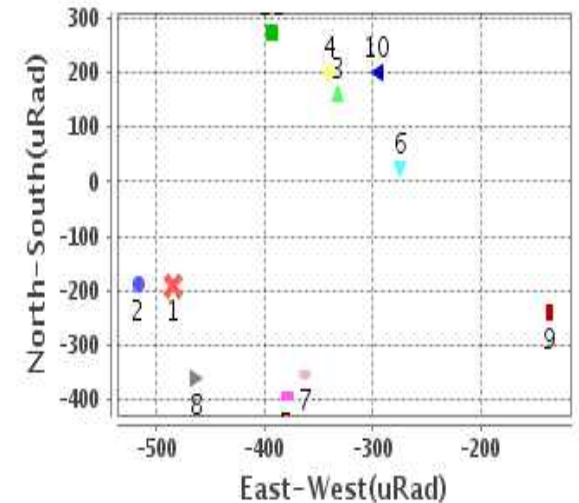
Radial Error (in IR Pixels)

Mean	4.021
Min	1.965
Max	5.899
CE90	5.151

Location Error For GCPs(Pixel)



Location Error For GCPs(uRad)



Detailed Product Information

Ancillary Info

Satellite	INSAT-3D	Generation Date	03-03-18
Sensor	IMG	DQE Date	05-03-2018
PassType	NONE	Aquisition Date	01-03-18
Imaging Mode	FULL_FRAME	Aquisition Time(GMT)	06:00
Sat Altitude(m)	3.6E7	Nominal Altitude(Km)	3.6E7
Station	BES	Predicted Altitude(Km)	-999.99
Sat Location(deg)	-999.99 E	Nominal Center Lat(deg)	0.0
Format	hdf5-1.8.8	Nominal Center Lon(deg)	82.0
LvlOfProcessing	STANDARD(FULL)	Predicted Center Lat(deg)	-999.99
DP JobId	3DIMG_01MAR2	Predicted Center Lon(deg)	-999.99
ProductCode	NONE		
Field View(deg)	17.974		

Projection Parameters

Projection	None
Ellipsoid	WGS_84
Datum	WGS_84
Zone	NotAvail
Semi_Major_Axis(Km)	6378.14
Semi_Minor_Axis(Km)	6356.75
Standard_Parallel1(deg)	-999.99
Standard_Parallel2(deg)	-999.99
Projection_Origin_Lon(deg)	-999.99
Projection_Origin_Lat(deg)	-999.99
Projection_False_Easting(Km)	-999.99
Projection_False_Northing(Km)	-999.99

Scene Center Desc

Centre Lat(deg)	0.0
Center Lon(deg)	82.0
Centre Roll(deg)	-999.0
Centre Pitch(deg)	-999.0
Center Yaw(deg)	-999.0
SunElevation(deg)	-999.99
SunAzimuth(deg)	-999.99
SatElevation(deg)	-999.99
SatAzimuth(deg)	-999.99

Scene Corner Desc

NW_Lat(deg)	81.042
NW_Lon(deg)	0.843
SW_Lat(deg)	-81.042
SW_Lon(deg)	0.843
NE_Lat(deg)	81.042
NE_Lon(deg)	163.157
SE_Lat(deg)	-81.042
SE_Lon(deg)	163.157

Band Wise Details

	Res_AL(Km)	Res_AX(Km)	Image Height	Image Width
MIR	4.0	4.0	2816	2805
SWIR	1.0	1.0	11264	11220
TIR1	4.0	4.0	2816	2805
TIR2	4.0	4.0	2816	2805
VIS	1.0	1.0	11264	11220
WV	8.0	8.0	1408	1402

GDQE Computation Base

Projection	MER	Wildpoint Rejection Threshold	2.60	SemiMajorAxis(m)	6378137.00	Mode Of Computation	grid
Ellipsoid	WGS_84		-sigma	SemiMinorAxis(m)	6356752.31	Used Reference Type	REFINSREF
Datum	WGS_84	Unit	meters	Standardparallel1(deg)	17.0		
Zone	Not Applicable			Standardparallel2(deg)	17.0		

* -999.99 : Not Applicable/Not Available

References

JobId : 3DIMG01MAR20180600L1BSTD

(-999.99 - Not Available/Not Computed)

Ref.No	Source	File Name	Resolution (m)	Projection
1	ETM	world_Band1.img	500.0	GGP

Location Accuracy

GCP Distribution Statistics

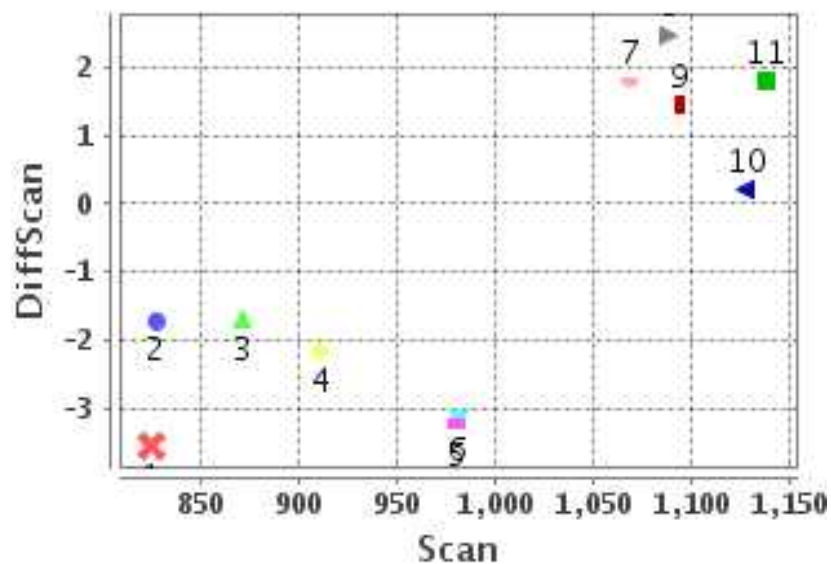
Image Width (pixels) : 2805 Image Height (pixels) : 2816 No of GCPs : 11

	Mean	StdDev	Min	Max	Coverage(in %)
GCP Scan	991.8	113.4	824.5	1137.25	11.11 (N-S)
GCP Pix	1096.2	411.8	474.8	1723.50	44.52 (E-W)

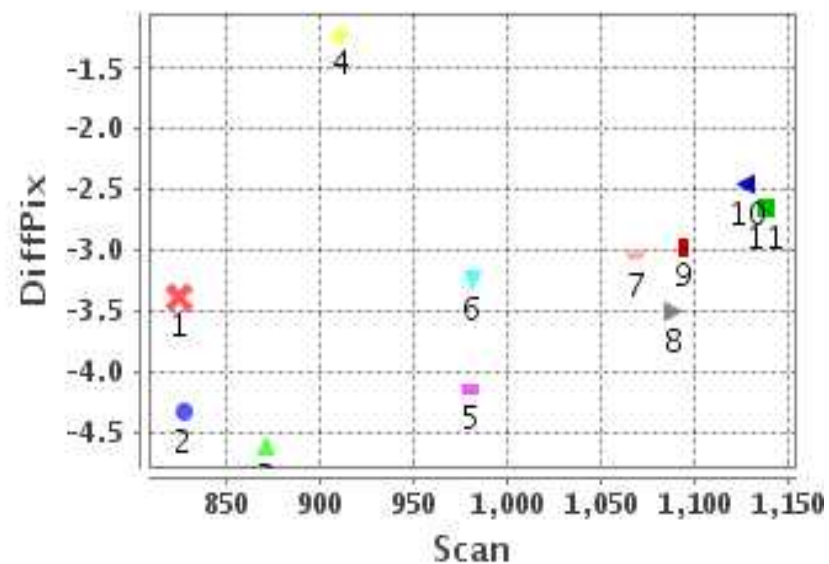
Identified Control Point details : (Differences are Reference - Product)

No	Scan	Pix	DiffScan (line)	DiffPix (pixel)	DifLat (Km)	Dir	DifLon (Km)	Dir	Status
1	827.2	863.5	-1.7	-4.33	7.028	N	19.370	W	Accepted
2	871.2	836.2	-1.7	-4.62	7.263	N	22.452	W	Accepted
3	1093.5	474.8	1.4	-2.97	8.053	S	11.470	W	Accepted
4	1068.2	686.5	1.8	-3.04	8.163	S	11.616	W	Accepted
5	824.5	1077.0	-3.5	-3.39	14.456	N	16.778	W	Accepted
6	1127.5	1345.5	0.2	-2.46	2.995	S	7.269	W	Accepted
7	981.2	1370.2	-3.2	-3.24	12.823	N	12.217	W	Accepted
8	980.2	1723.5	-3.2	-4.14	12.005	N	14.799	W	Accepted
9	910.5	1702.2	-2.2	-1.22	7.219	N	3.782	W	Accepted
10	1137.2	1355.5	1.8	-2.65	8.228	S	8.077	W	Accepted
11	1088.0	623.2	2.5	-3.52	10.217	S	14.867	W	Accepted

Error(Pixels) Vs. GCPScan



Error(Pixels) Vs. GCPScan



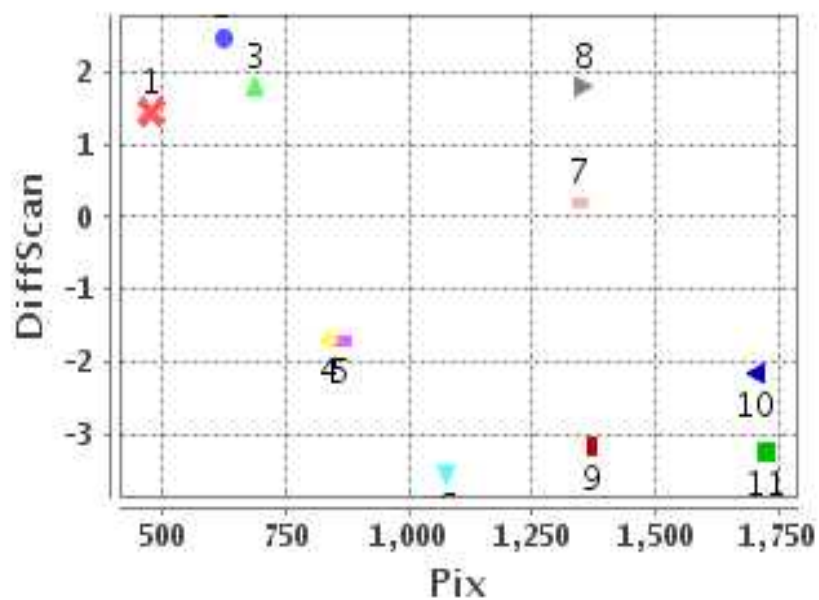
Number Of Points

North	6
South	5
East	0
West	11

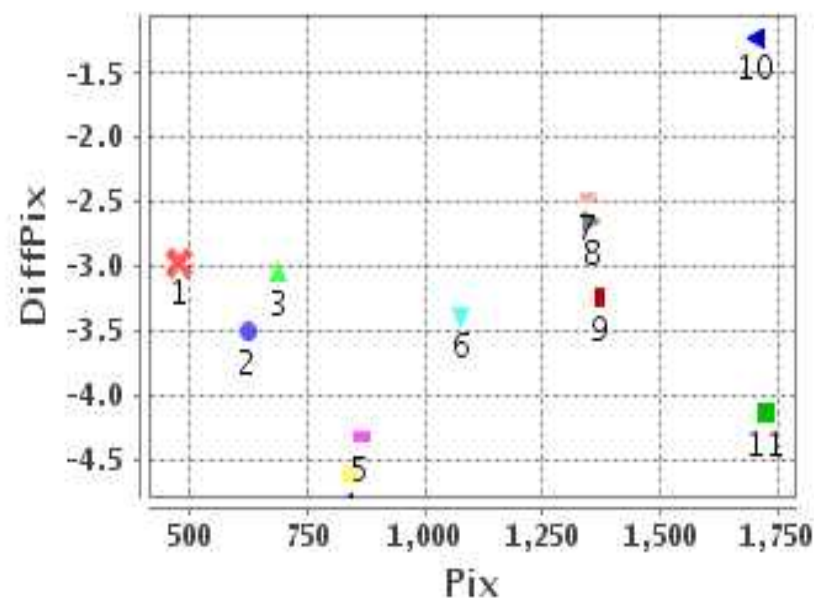
Radial Error (Km)

Mean	4.021
Min	1.965
Max	5.899
CE90	5.151

Error(Pixels) Vs. GCPPix



Error(Pixels) Vs. GCPPix



Location Accuracy

	Mean	StdDev	RMS	Dir	* MinRMS	* MaxRMS
Along(Km)	0.526	2.306	2.365	N	2.201	2.469
Across (Km)	-3.243	1.301	3.494	W	3.206	3.653

Block-Wise Geo location Error Statistics

Location Accuracy,Scale,ID

Scan Range-0-937; Pix Range-0-934		
Number of GCPs	2	
Location Error(Km)		
Along(Mean,Dir)	7.145	N
Across(Mean,Dir)	-20.91	W
Scale(Km)		
Average Scale (Mean,%Variation)	4.30	7.56
Internal Distortion(Pixel)		
Along(Mean,Stddev)	-0.02	0.00
Across(Mean,Stddev)	-0.29	0.00

Scan Range-0-937; Pix Range-934-1869		
Number of GCPs	2	
Location Error(Km)		
Along(Mean,Dir)	10.84	N
Across(Mean,Dir)	-10.28	W
Scale(Km)		
Average Scale (Mean,%Variation)	4.22	5.39
Internal Distortion(Pixel)		
Along(Mean,Stddev)	-1.38	0.00
Across(Mean,Stddev)	-2.17	0.00

Scan Range-0-937; Pix Range-1869-2805		
Number of GCPs	-999	
Location Error(Km)		
Along(Mean,Dir)	-999.99	NotAvail
Across(Mean,Dir)	-999.99	NotAvail
Scale(Km)		
Average Scale (Mean,%Variation)	-999.99	-999.9
Internal Distortion(Pixel)		
Along(Mean,Stddev)	-999.99	-999.99
Across(Mean,Stddev)	-999.99	-999.99

Scan Range-937-1876; Pix Range-0-934		
Number of GCPs	3	
Location Error(Km)		
Along(Mean,Dir)	-8.81	S
Across(Mean,Dir)	-12.65	W
Scale(Km)		
Average Scale (Mean,%Variation)	5.06	26.55
Internal Distortion(Pixel)		
Along(Mean,Stddev)	-0.16	0.52
Across(Mean,Stddev)	0.31	0.24

Scan Range-937-1876; Pix Range-934-1869		
Number of GCPs	4	
Location Error(Km)		
Along(Mean,Dir)	3.405	N
Across(Mean,Dir)	-10.59	W
Scale(Km)		
Average Scale (Mean,%Variation)	4.14	3.40
Internal Distortion(Pixel)		
Along(Mean,Stddev)	-2.84	2.07
Across(Mean,Stddev)	0.88	0.61

Scan Range-937-1876; Pix Range-1869-2805		
Number of GCPs	-999	
Location Error(Km)		
Along(Mean,Dir)	-999.99	NotAvail
Across(Mean,Dir)	-999.99	NotAvail
Scale(Km)		
Average Scale (Mean,%Variation)	-999.99	-999.9
Internal Distortion(Pixel)		
Along(Mean,Stddev)	-999.99	-999.99
Across(Mean,Stddev)	-999.99	-999.99

Scan Range-1876-2816; Pix Range-0-934		
Number of GCPs	-999	
Location Error(Km)		
Along(Mean,Dir)	-999.99	NotAvail
Across(Mean,Dir)	-999.99	NotAvail
Scale(Km)		
Average Scale (Mean,%Variation)	-999.99	-999.9
Internal Distortion(Pixel)		
Along(Mean,Stddev)	-999.99	-999.99
Across(Mean,Stddev)	-999.99	-999.99

Scan Range-1876-2816; Pix Range-937-1869		
Number of GCPs	-999	
Location Error(Km)		
Along(Mean,Dir)	-999.99	NotAvail
Across(Mean,Dir)	-999.99	NotAvail
Scale(Km)		
Average Scale (Mean,%Variation)	-999.99	-999.9
Internal Distortion(Pixel)		
Along(Mean,Stddev)	-999.99	-999.99
Across(Mean,Stddev)	-999.99	-999.99

Scan Range-1876-2816; Pix Range-1869-2805		
Number of GCPs	-999	
Location Error(Km)		
Along(Mean,Dir)	-999.99	NotAvail
Across(Mean,Dir)	-999.99	NotAvail
Scale(Km)		
Average Scale (Mean,%Variation)	-999.99	-999.9
Internal Distortion(Pixel)		
Along(Mean,Stddev)	-999.99	-999.99
Across(Mean,Stddev)	-999.99	-999.99

*-999 : no gcp available

* -999.99 : values are not computed