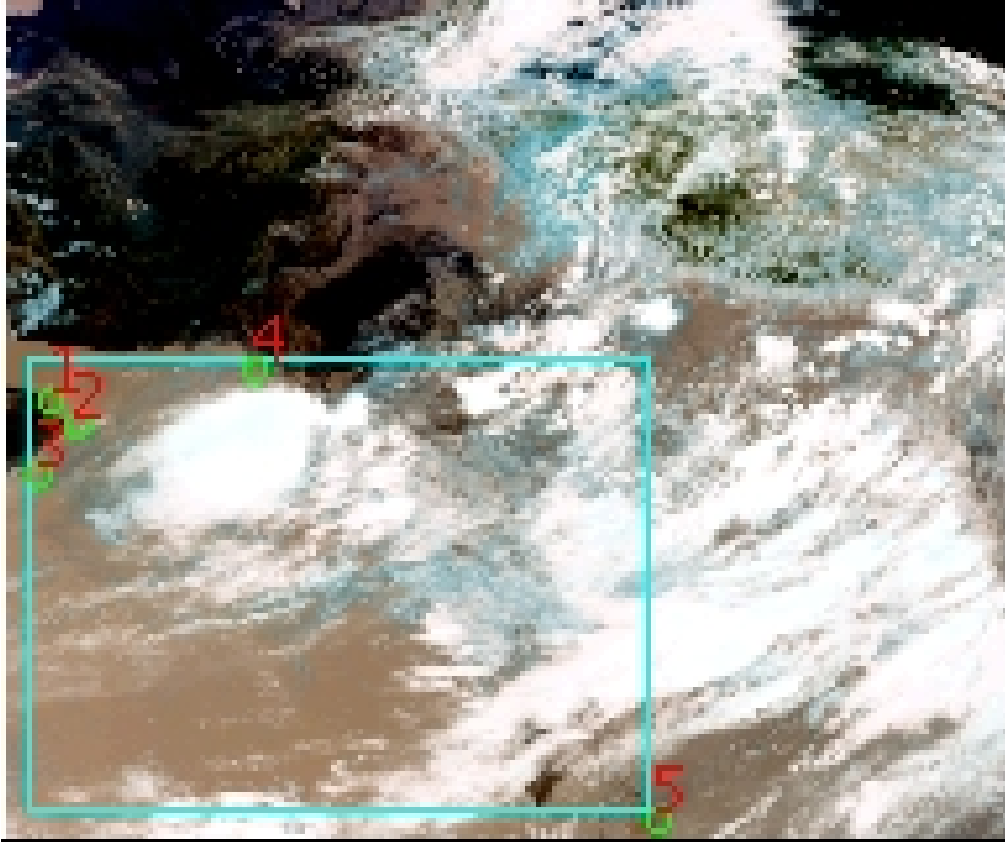


# DQE Report: Location Accuracy of INSAT-3DR-SND STANDARD Product 3RSND\_05JUL2020\_0459

Satellite	INSAT-3DR	No Of Bands	19	Product Type	STANDARD
Sensor	SND	LvlOfProcess	L1B	Selected Band	2-LWIR3
DOP/Time	05-07-20/04:59	Station ID	BES	Field View(deg)	6.136
Res(Y,X) [Km]	(10.0,10.0)	Res(Y,X) [uRad]	(280.0,280.0)		

(41.87N,54.199W)

(41.87N,105.041E)



(6.989S,54.199W)

(6.989S,105.041E)

GCP Distribution overview for 3RSND05JUL20200459L1BSA1

Image Width: 384 Image Height: 320 No Of GCPs: 5

GCP Coverage(%) 53.98 (N-S) 61.78 (E-W)

### Location Error(E)

Legend — 0Km < E <= 50Km — 50Km < E <= 100Km — E >100Km

### Location Error (In IR Pixels)

	Mean	Direction	Stddev	RMS
Along	0.496	N	1.858	1.923
Across	-13.630	W	1.665	13.731

### Scale (Km)

	Pixel Size	Stddev	%variation
Average	11.400	1.082	14.001
Along	13.304	0.000	33.042
Across	12.444	0.000	24.441

### Internal Distortion (in IR Pixels)

	PeakToPeak	Mean	Stddev	RMS
Along	2.358	-0.953	1.08	1.439
Across	3.304	3.636	1.19	3.827

### Attitude Residuals (Deg)

Pitch	Roll	Yaw
-0.17624	0.00191	-0.22971

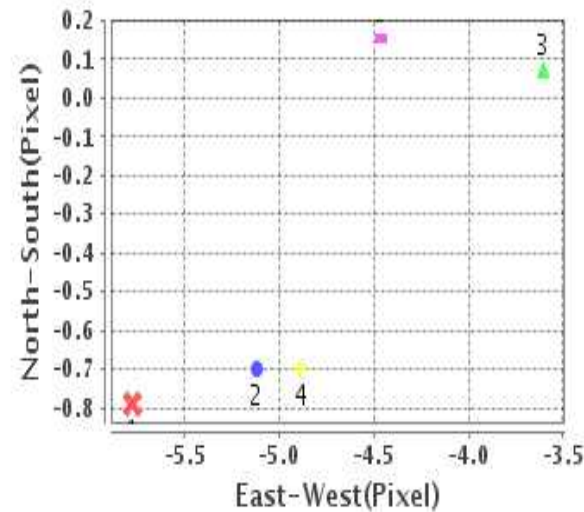
### Reference Used

Sensor	Resolution	Projection
ETM	500.00	GGP

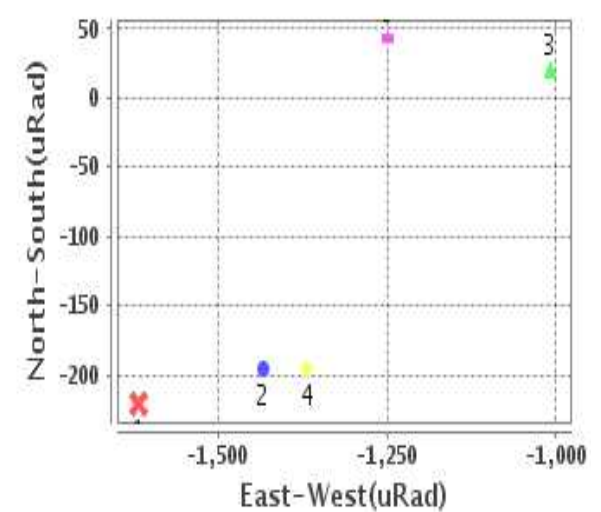
### Radial Error (in IR Pixels)

Mean	13.757
Min	10.796
Max	15.685
CE90	15.284

### Location Error For GCPs(Pixel)



### Location Error For GCPs(uRad)



## Detailed Product Information

### Ancillary Info

<b>Satellite</b>	INSAT-3DR	<b>Generation Date</b>	05-07-20
<b>Sensor</b>	SND	<b>DQE Date</b>	06-07-2020
<b>PassType</b>	NONE	<b>Aquisition Date</b>	05-07-20
<b>Imaging Mode</b>	FULL_FRAME	<b>Aquisition Time(GMT)</b>	04:59
<b>Sat Altitude(m)</b>	3.6E7	<b>Nominal Altitude(Km)</b>	3.6E7
<b>Station</b>	BES	<b>Predicted Altitude(Km)</b>	-999.99
<b>Sat Location(deg)</b>	-999.99 E	<b>Nominal Center Lat(deg)</b>	0.0
<b>Format</b>	hdf5-1.8.8	<b>Nominal Center Lon(deg)</b>	74.0
<b>LvlOfProcessing</b>	STANDARD	<b>Predicted Center Lat(deg)</b>	-999.99
<b>DP JobId</b>	3RSND_05JUL20	<b>Predicted Center Lon(deg)</b>	-999.99
<b>ProductCode</b>	NONE		
<b>Field View(deg)</b>	6.136		

### Projection Parameters

<b>Projection</b>	None
<b>Ellipsoid</b>	WGS_84
<b>Datum</b>	WGS_84
<b>Zone</b>	NotAvail
<b>Semi_Major_Axis(Km)</b>	6378.14
<b>Semi_Minor_Axis(Km)</b>	6356.75
<b>Standard_Parallel1(deg)</b>	-999.99
<b>Standard_Parallel2(deg)</b>	-999.99
<b>Projection_Origin_Lon(deg)</b>	-999.99
<b>Projection_Origin_Lat(deg)</b>	-999.99
<b>Projection_False_Easting(Km)</b>	-999.99
<b>Projection_False_Northing(Km)</b>	-999.99

### Scene Center Desc

<b>Centre Lat(deg)</b>	24.43
<b>Center Lon(deg)</b>	79.62
<b>Centre Roll(deg)</b>	-999.0
<b>Centre Pitch(deg)</b>	-999.0
<b>Center Yaw(deg)</b>	-999.0
<b>SunElevation(deg)</b>	-999.99
<b>SunAzimuth(deg)</b>	-999.99
<b>SatElevation(deg)</b>	-999.99
<b>SatAzimuth(deg)</b>	-999.99

### Scene Corner Desc

<b>NW_Lat(deg)</b>	41.87
<b>NW_Lon(deg)</b>	54.199
<b>SW_Lat(deg)</b>	6.989
<b>SW_Lon(deg)</b>	54.199
<b>NE_Lat(deg)</b>	41.87
<b>NE_Lon(deg)</b>	105.041
<b>SE_Lat(deg)</b>	6.989
<b>SE_Lon(deg)</b>	105.041

### Band Wise Details

	Res_AL(Km)	Res_AX(Km)	Image Height	Image Width
<b>LWIR1</b>	10.0	10.0	320	384
<b>LWIR2</b>	10.0	10.0	320	384
<b>LWIR3</b>	10.0	10.0	320	384
<b>LWIR4</b>	10.0	10.0	320	384
<b>LWIR5</b>	10.0	10.0	320	384
<b>LWIR6</b>	10.0	10.0	320	384

## GDQE Computation Base

<b>Projection</b>	MER	<b>Wildpoint Rejection Threshold</b>	2.60	<b>SemiMajorAxis(m)</b>	6378137.00	<b>Mode Of Computation</b>	grid
<b>Ellipsoid</b>	WGS_84		-sigma	<b>SemiMinorAxis(m)</b>	6356752.31	<b>Used Reference Type</b>	REFINSREF
<b>Datum</b>	WGS_84	<b>Unit</b>	pixels	<b>Standardparallel1(deg)</b>	17.0		
<b>Zone</b>	Not Applicable			<b>Standardparallel2(deg)</b>	17.0		

\* -999.99 : Not Applicable/Not Available

## References

**JobId : 3RSND05JUL20200459L1BSA1**

(-999.99 - Not Available/Not Computed)

Ref.No	Source	File Name	Resolution ( m )	Projection
1	ETM	world_Band1.img	500.0	GGP

## Location Accuracy

### GCP Distribution Statistics

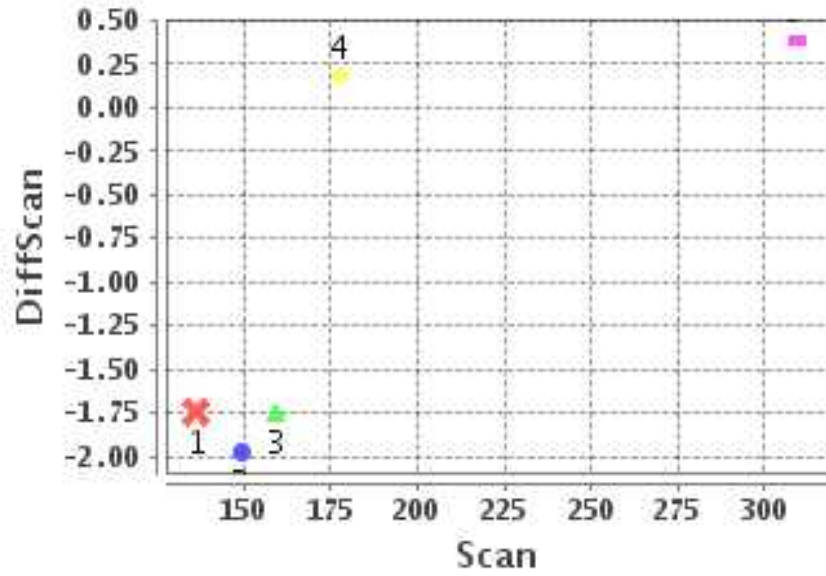
Image Width (pixels) : 384      Image Height (pixels) : 320      No of GCPs : 5

	Mean	StdDev	Min	Max	Coverage(in %)
<b>GCP Scan</b>	186.4	62.9	136.5	309.25	53.98 (N-S)
<b>GCP Pix</b>	78.2	89.7	10.0	247.25	61.78 (E-W)

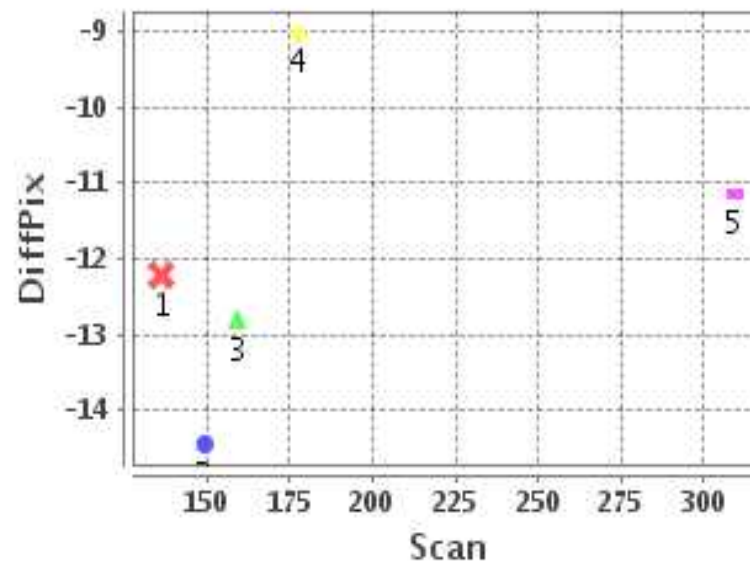
### Identified Control Point details : ( Differences are Reference - Product )

No	Scan	Pix	DiffScan (line)	DiffPix (pixel)	DifLat (Km)	Dir	DifLon (Km)	Dir	Status
1	149.2	15.8	-2.0	-14.45	23.610	N	155.061	W	Accepted
2	159.5	24.8	-1.7	-12.80	16.970	N	133.798	W	Accepted
3	177.5	10.0	0.2	-9.02	25.692	S	150.665	W	Accepted
4	136.5	93.0	-1.7	-12.22	17.093	N	134.249	W	Accepted
5	309.2	247.2	0.4	-11.14	7.170	S	107.722	W	Accepted

### Error(Pixels) Vs. GCPScan



### Error(Pixels) Vs. GCPScan



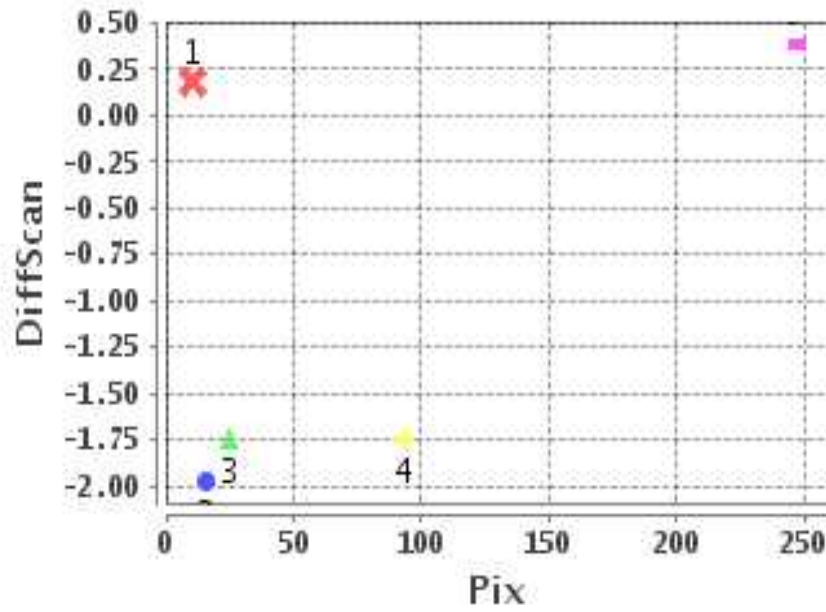
#### Number Of Points

North	3
South	2
East	0
West	5

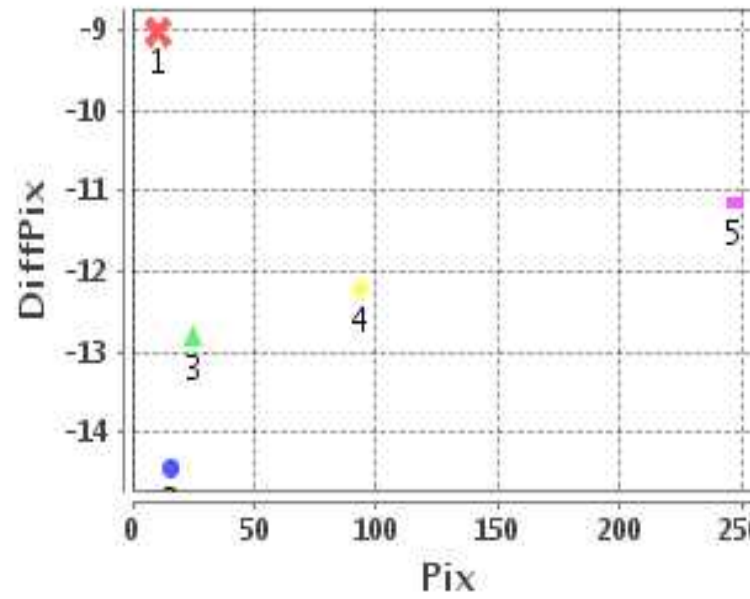
#### Radial Error ( Km )

Mean	13.757
Min	10.796
Max	15.685
CE90	15.284

### Error(Pixels) Vs. GCPPix



### Error(Pixels) Vs. GCPPix



#### Location Accuracy

	Mean	StdDev	RMS	Dir	* MinRMS	* MaxRMS
Along( Km )	0.496	1.858	1.923	N	1.724	2.120
Across ( Km )	-13.630	1.665	13.731	W	13.250	14.376

## Block-Wise Geo location Error Statistics

### Location Accuracy,Scale,ID

<b>Scan Range-0-105; Pix Range-0-127</b>		
Number of GCPs	-999	
<b>Location Error(Km)</b>		
Along(Mean,Dir)	-999.99	NotAvail
Across(Mean,Dir)	-999.99	NotAvail
<b>Scale(Km)</b>		
Average Scale (Mean,%Variation)	-999.99	-999.9
<b>Internal Distortion(Pixel)</b>		
Along(Mean,Stddev)	-999.99	-999.99
Across(Mean,Stddev)	-999.99	-999.99

<b>Scan Range-0-105; Pix Range-127-255</b>		
Number of GCPs	-999	
<b>Location Error(Km)</b>		
Along(Mean,Dir)	-999.99	NotAvail
Across(Mean,Dir)	-999.99	NotAvail
<b>Scale(Km)</b>		
Average Scale (Mean,%Variation)	-999.99	-999.9
<b>Internal Distortion(Pixel)</b>		
Along(Mean,Stddev)	-999.99	-999.99
Across(Mean,Stddev)	-999.99	-999.99

<b>Scan Range-0-105; Pix Range-255-384</b>		
Number of GCPs	-999	
<b>Location Error(Km)</b>		
Along(Mean,Dir)	-999.99	NotAvail
Across(Mean,Dir)	-999.99	NotAvail
<b>Scale(Km)</b>		
Average Scale (Mean,%Variation)	-999.99	-999.9
<b>Internal Distortion(Pixel)</b>		
Along(Mean,Stddev)	-999.99	-999.99
Across(Mean,Stddev)	-999.99	-999.99

<b>Scan Range-105-212; Pix Range-0-127</b>		
Number of GCPs	4	
<b>Location Error(Km)</b>		
Along(Mean,Dir)	7.995	N
Across(Mean,Dir)	-143.44	W
<b>Scale(Km)</b>		
Average Scale (Mean,%Variation)	11.97	19.66
<b>Internal Distortion(Pixel)</b>		
Along(Mean,Stddev)	-0.56	0.97
Across(Mean,Stddev)	4.14	0.94

<b>Scan Range-105-212; Pix Range-127-255</b>		
Number of GCPs	-999	
<b>Location Error(Km)</b>		
Along(Mean,Dir)	-999.99	NotAvail
Across(Mean,Dir)	-999.99	NotAvail
<b>Scale(Km)</b>		
Average Scale (Mean,%Variation)	-999.99	-999.9
<b>Internal Distortion(Pixel)</b>		
Along(Mean,Stddev)	-999.99	-999.99
Across(Mean,Stddev)	-999.99	-999.99

<b>Scan Range-105-212; Pix Range-255-384</b>		
Number of GCPs	-999	
<b>Location Error(Km)</b>		
Along(Mean,Dir)	-999.99	NotAvail
Across(Mean,Dir)	-999.99	NotAvail
<b>Scale(Km)</b>		
Average Scale (Mean,%Variation)	-999.99	-999.9
<b>Internal Distortion(Pixel)</b>		
Along(Mean,Stddev)	-999.99	-999.99
Across(Mean,Stddev)	-999.99	-999.99

<b>Scan Range-212-320; Pix Range-0-127</b>		
Number of GCPs	-999	
<b>Location Error(Km)</b>		
Along(Mean,Dir)	-999.99	NotAvail
Across(Mean,Dir)	-999.99	NotAvail
<b>Scale(Km)</b>		
Average Scale (Mean,%Variation)	-999.99	-999.9
<b>Internal Distortion(Pixel)</b>		
Along(Mean,Stddev)	-999.99	-999.99
Across(Mean,Stddev)	-999.99	-999.99

<b>Scan Range-212-320; Pix Range-105-255</b>		
Number of GCPs	1	
<b>Location Error(Km)</b>		
Along(Mean,Dir)	-7.17	S
Across(Mean,Dir)	-107.72	W
<b>Scale(Km)</b>		
Average Scale (Mean,%Variation)	-999.99	-999.9
<b>Internal Distortion(Pixel)</b>		
Along(Mean,Stddev)	-999.99	-999.99
Across(Mean,Stddev)	-999.99	-999.99

<b>Scan Range-212-320; Pix Range-255-384</b>		
Number of GCPs	-999	
<b>Location Error(Km)</b>		
Along(Mean,Dir)	-999.99	NotAvail
Across(Mean,Dir)	-999.99	NotAvail
<b>Scale(Km)</b>		
Average Scale (Mean,%Variation)	-999.99	-999.9
<b>Internal Distortion(Pixel)</b>		
Along(Mean,Stddev)	-999.99	-999.99
Across(Mean,Stddev)	-999.99	-999.99

\*-999 : no gcp available

\* -999.99 : values are not computed