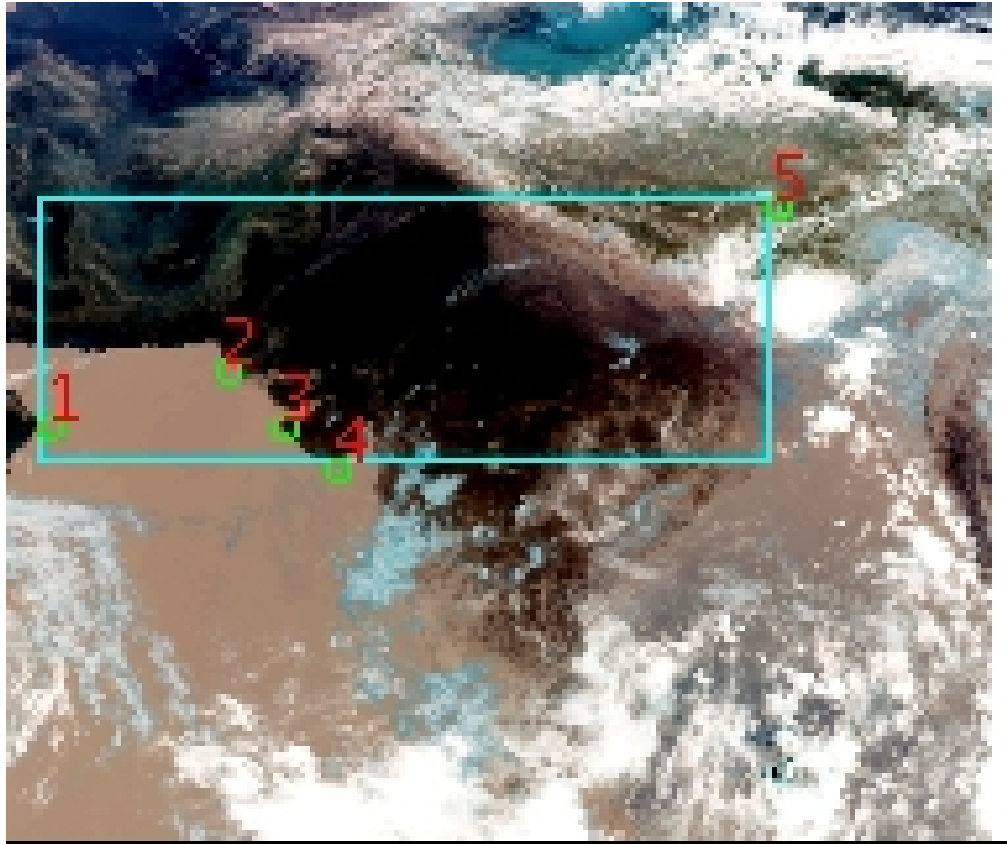


# DQE Report: Location Accuracy of INSAT-3DR-SND STANDARD Product 3RSND\_24MAY2018\_0500

**Satellite** INSAT-3DR    **No Of Bands** 19    **Product Type** STANDARD  
**Sensor** SND    **LvlOfProcess** L1B    **Selected Band** 2-LWIR3  
**DOP/Time** 24-05-18/05:00    **Station ID** BES    **Field View(deg)** 6.136  
**Res(Y,X) [Km]** (10.0,10.0)    **Res(Y,X) [uRad]** (280.0,280.0)

(41.785N,54.342W)

(41.785N,105.114E)



(7.052S,54.342W)

(7.052S,105.114E)

GCP Distribution overview for 3RSND24MAY20180500L1BSA1

**Image Width:** 384    **Image Height:** 320    **No Of GCPs:** 5

**GCP Coverage(%)**    31.64    **(N-S)** 72.07    **(E-W)**

## Location Error(E)

**Legend**    — 0Km < E <= 50Km    — 50Km < E <= 100Km    — E >100Km

## Location Error (In IR Pixels)

	Mean	Direction	Stddev	RMS
Along	0.041	N	0.743	0.745
Across	-1.564	W	0.365	1.606

## Scale (Km)

	Pixel Size	Stddev	%variation
Average	11.367	0.406	13.666
Along	22.259	13.837	122.593
Across	18.015	10.089	80.151

## Internal Distortion (in IR Pixels)

	PeakToPeak	Mean	Stddev	RMS
Along	1.647	-0.540	0.64	0.837
Across	1.155	-0.433	0.45	0.623

## Attitude Residuals (Deg)

Pitch	Roll	Yaw
-0.02691	-0.00561	0.19123

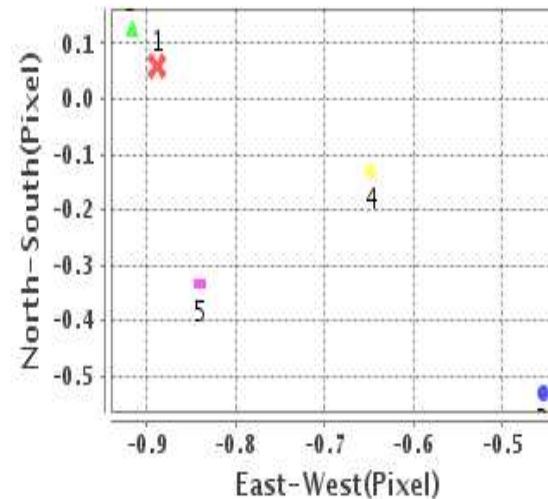
## Reference Used

Sensor	Resolution	Projection
ETM	500.00	GGP

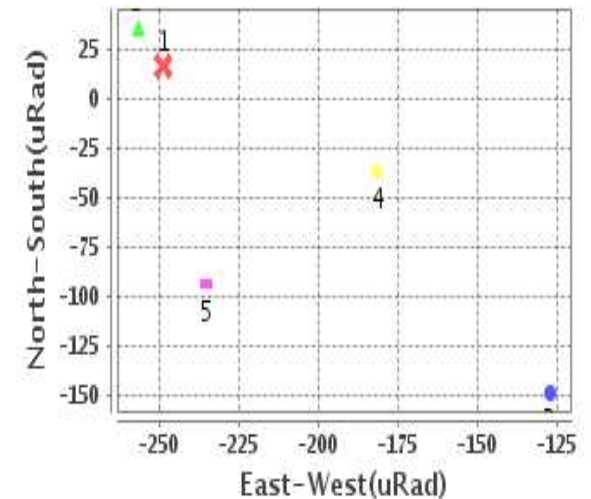
## Radial Error (in IR Pixels)

<b>Mean</b>	1.741
<b>Min</b>	1.302
<b>Max</b>	2.172
<b>CE90</b>	1.955

## Location Error For GCPs(Pixel)



## Location Error For GCPs(uRad)



## Detailed Product Information

### Ancillary Info

<b>Satellite</b>	INSAT-3DR	<b>Generation Date</b>	24-05-18
<b>Sensor</b>	SND	<b>DQE Date</b>	30-05-2018
<b>PassType</b>	NONE	<b>Aquisition Date</b>	24-05-18
<b>Imaging Mode</b>	FULL_FRAME	<b>Aquisition Time(GMT)</b>	05:00
<b>Sat Altitude(m)</b>	3.6E7	<b>Nominal Altitude(Km)</b>	3.6E7
<b>Station</b>	BES	<b>Predicted Altitude(Km)</b>	-999.99
<b>Sat Location(deg)</b>	-999.99 E	<b>Nominal Center Lat(deg)</b>	0.0
<b>Format</b>	hdf5-1.8.8	<b>Nominal Center Lon(deg)</b>	74.0
<b>LvlOfProcessing</b>	STANDARD	<b>Predicted Center Lat(deg)</b>	-999.99
<b>DP JobId</b>	3RSND_24MAY2	<b>Predicted Center Lon(deg)</b>	-999.99
<b>ProductCode</b>	NONE		
<b>Field View(deg)</b>	6.136		

### Projection Parameters

<b>Projection</b>	None
<b>Ellipsoid</b>	WGS_84
<b>Datum</b>	WGS_84
<b>Zone</b>	NotAvail
<b>Semi_Major_Axis(Km)</b>	6378.14
<b>Semi_Minor_Axis(Km)</b>	6356.75
<b>Standard_Parallel1(deg)</b>	-999.99
<b>Standard_Parallel2(deg)</b>	-999.99
<b>Projection_Origin_Lon(deg)</b>	-999.99
<b>Projection_Origin_Lat(deg)</b>	-999.99
<b>Projection_False_Easting(Km)</b>	-999.99
<b>Projection_False_Northing(Km)</b>	-999.99

### Scene Center Desc

<b>Centre Lat(deg)</b>	24.418
<b>Center Lon(deg)</b>	79.728
<b>Centre Roll(deg)</b>	-999.0
<b>Centre Pitch(deg)</b>	-999.0
<b>Center Yaw(deg)</b>	-999.0
<b>SunElevation(deg)</b>	-999.99
<b>SunAzimuth(deg)</b>	-999.99
<b>SatElevation(deg)</b>	-999.99
<b>SatAzimuth(deg)</b>	-999.99

### Scene Corner Desc

<b>NW_Lat(deg)</b>	41.785
<b>NW_Lon(deg)</b>	54.342
<b>SW_Lat(deg)</b>	7.052
<b>SW_Lon(deg)</b>	54.342
<b>NE_Lat(deg)</b>	41.785
<b>NE_Lon(deg)</b>	105.114
<b>SE_Lat(deg)</b>	7.052
<b>SE_Lon(deg)</b>	105.114

### Band Wise Details

	Res_AL(Km)	Res_AX(Km)	Image Height	Image Width
<b>LWIR1</b>	10.0	10.0	320	384
<b>LWIR2</b>	10.0	10.0	320	384
<b>LWIR3</b>	10.0	10.0	320	384
<b>LWIR4</b>	10.0	10.0	320	384
<b>LWIR5</b>	10.0	10.0	320	384
<b>LWIR6</b>	10.0	10.0	320	384

## GDQE Computation Base

<b>Projection</b>	MER	<b>Wildpoint Rejection Threshold</b>	2.60	<b>SemiMajorAxis(m)</b>	6378137.00	<b>Mode Of Computation</b>	grid
<b>Ellipsoid</b>	WGS_84		-sigma	<b>SemiMinorAxis(m)</b>	6356752.31	<b>Used Reference Type</b>	REFINSREF
<b>Datum</b>	WGS_84	<b>Unit</b>	pixels	<b>Standardparallel1(deg)</b>	17.0		
<b>Zone</b>	Not Applicable			<b>Standardparallel2(deg)</b>	17.0		

\* -999.99 : Not Applicable/Not Available

## References

**JobId : 3RSND24MAY20180500L1BSA1**

(-999.99 - Not Available/Not Computed)

Ref.No	Source	File Name	Resolution ( m )	Projection
1	ETM	world_Band1.img	500.0	GGP

## Location Accuracy

### GCP Distribution Statistics

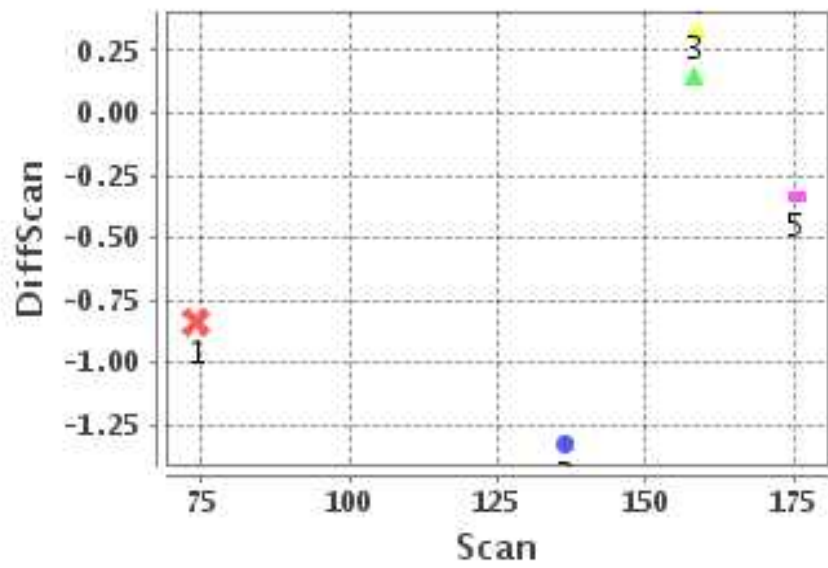
Image Width (pixels) : 384      Image Height (pixels) : 320      No of GCPs : 5

	Mean	StdDev	Min	Max	Coverage(in %)
<b>GCP Scan</b>	140.6	35.4	74.2	175.50	31.64 (N-S)
<b>GCP Pix</b>	122.2	91.7	13.5	290.25	72.07 (E-W)

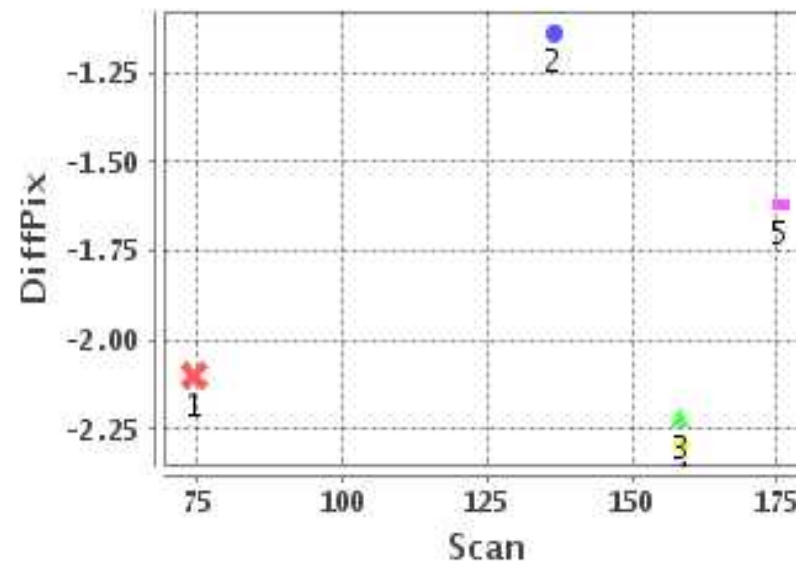
### Identified Control Point details : ( Differences are Reference - Product )

No	Scan	Pix	DiffScan (line)	DiffPix (pixel)	DifLat (Km)	Dir	DifLon (Km)	Dir	Status
1	158.2	13.5	0.1	-2.22	4.562	S	19.015	W	Accepted
2	136.5	81.2	-1.3	-1.14	10.098	N	10.504	W	Accepted
3	158.5	103.8	0.3	-2.29	9.425	S	15.535	W	Accepted
4	175.5	122.2	-0.3	-1.62	1.919	S	12.881	W	Accepted
5	74.2	290.2	-0.8	-2.10	7.865	N	20.249	W	Accepted

### Error(Pixels) Vs. GCPScan



### Error(Pixels) Vs. GCPScan



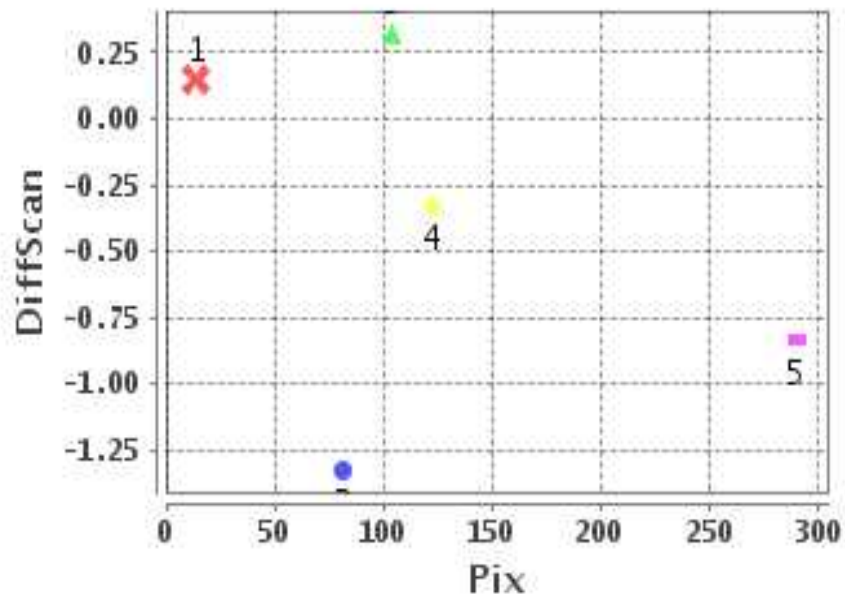
#### Number Of Points

North	2
South	3
East	0
West	5

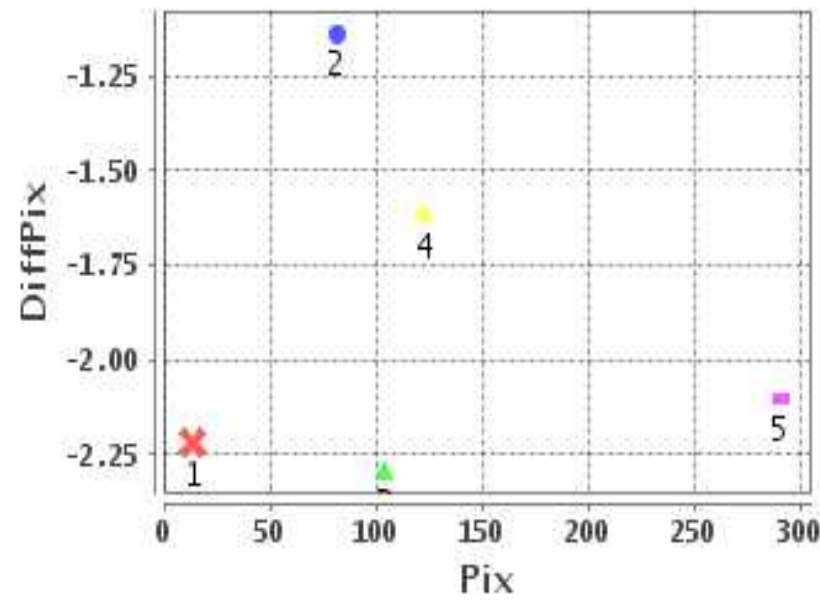
#### Radial Error ( Km )

Mean	1.741
Min	1.302
Max	2.172
CE90	1.955

### Error(Pixels) Vs. GCPPix



### Error(Pixels) Vs. GCPPix



#### Location Accuracy

	Mean	StdDev	RMS	Dir	* MinRMS	* MaxRMS
Along( Km )	0.041	0.743	0.745	N	0.662	0.827
Across ( Km )	-1.564	0.365	1.606	W	1.483	1.717

## Block-Wise Geo location Error Statistics

### Location Accuracy,Scale,ID

<b>Scan Range-0-105; Pix Range-0-127</b>		
Number of GCPs	-999	
<b>Location Error(Km)</b>		
Along(Mean,Dir)	-999.99	NotAvail
Across(Mean,Dir)	-999.99	NotAvail
<b>Scale(Km)</b>		
Average Scale (Mean,%Variation)	-999.99	-999.9
<b>Internal Distortion(Pixel)</b>		
Along(Mean,Stddev)	-999.99	-999.99
Across(Mean,Stddev)	-999.99	-999.99

<b>Scan Range-0-105; Pix Range-127-255</b>		
Number of GCPs	-999	
<b>Location Error(Km)</b>		
Along(Mean,Dir)	-999.99	NotAvail
Across(Mean,Dir)	-999.99	NotAvail
<b>Scale(Km)</b>		
Average Scale (Mean,%Variation)	-999.99	-999.9
<b>Internal Distortion(Pixel)</b>		
Along(Mean,Stddev)	-999.99	-999.99
Across(Mean,Stddev)	-999.99	-999.99

<b>Scan Range-0-105; Pix Range-255-384</b>		
Number of GCPs	1	
<b>Location Error(Km)</b>		
Along(Mean,Dir)	7.86	N
Across(Mean,Dir)	-20.25	W
<b>Scale(Km)</b>		
Average Scale (Mean,%Variation)	-999.99	-999.9
<b>Internal Distortion(Pixel)</b>		
Along(Mean,Stddev)	-999.99	-999.99
Across(Mean,Stddev)	-999.99	-999.99

<b>Scan Range-105-212; Pix Range-0-127</b>		
Number of GCPs	4	
<b>Location Error(Km)</b>		
Along(Mean,Dir)	-1.455	S
Across(Mean,Dir)	-14.48	W
<b>Scale(Km)</b>		
Average Scale (Mean,%Variation)	11.19	11.88
<b>Internal Distortion(Pixel)</b>		
Along(Mean,Stddev)	-1.37	0.28
Across(Mean,Stddev)	-0.54	0.47

<b>Scan Range-105-212; Pix Range-127-255</b>		
Number of GCPs	-999	
<b>Location Error(Km)</b>		
Along(Mean,Dir)	-999.99	NotAvail
Across(Mean,Dir)	-999.99	NotAvail
<b>Scale(Km)</b>		
Average Scale (Mean,%Variation)	-999.99	-999.9
<b>Internal Distortion(Pixel)</b>		
Along(Mean,Stddev)	-999.99	-999.99
Across(Mean,Stddev)	-999.99	-999.99

<b>Scan Range-105-212; Pix Range-255-384</b>		
Number of GCPs	-999	
<b>Location Error(Km)</b>		
Along(Mean,Dir)	-999.99	NotAvail
Across(Mean,Dir)	-999.99	NotAvail
<b>Scale(Km)</b>		
Average Scale (Mean,%Variation)	-999.99	-999.9
<b>Internal Distortion(Pixel)</b>		
Along(Mean,Stddev)	-999.99	-999.99
Across(Mean,Stddev)	-999.99	-999.99

<b>Scan Range-212-320; Pix Range-0-127</b>		
Number of GCPs	-999	
<b>Location Error(Km)</b>		
Along(Mean,Dir)	-999.99	NotAvail
Across(Mean,Dir)	-999.99	NotAvail
<b>Scale(Km)</b>		
Average Scale (Mean,%Variation)	-999.99	-999.9
<b>Internal Distortion(Pixel)</b>		
Along(Mean,Stddev)	-999.99	-999.99
Across(Mean,Stddev)	-999.99	-999.99

<b>Scan Range-212-320; Pix Range-105-255</b>		
Number of GCPs	-999	
<b>Location Error(Km)</b>		
Along(Mean,Dir)	-999.99	NotAvail
Across(Mean,Dir)	-999.99	NotAvail
<b>Scale(Km)</b>		
Average Scale (Mean,%Variation)	-999.99	-999.9
<b>Internal Distortion(Pixel)</b>		
Along(Mean,Stddev)	-999.99	-999.99
Across(Mean,Stddev)	-999.99	-999.99

<b>Scan Range-212-320; Pix Range-255-384</b>		
Number of GCPs	-999	
<b>Location Error(Km)</b>		
Along(Mean,Dir)	-999.99	NotAvail
Across(Mean,Dir)	-999.99	NotAvail
<b>Scale(Km)</b>		
Average Scale (Mean,%Variation)	-999.99	-999.9
<b>Internal Distortion(Pixel)</b>		
Along(Mean,Stddev)	-999.99	-999.99
Across(Mean,Stddev)	-999.99	-999.99

\*-999 : no gcp available

\* -999.99 : values are not computed