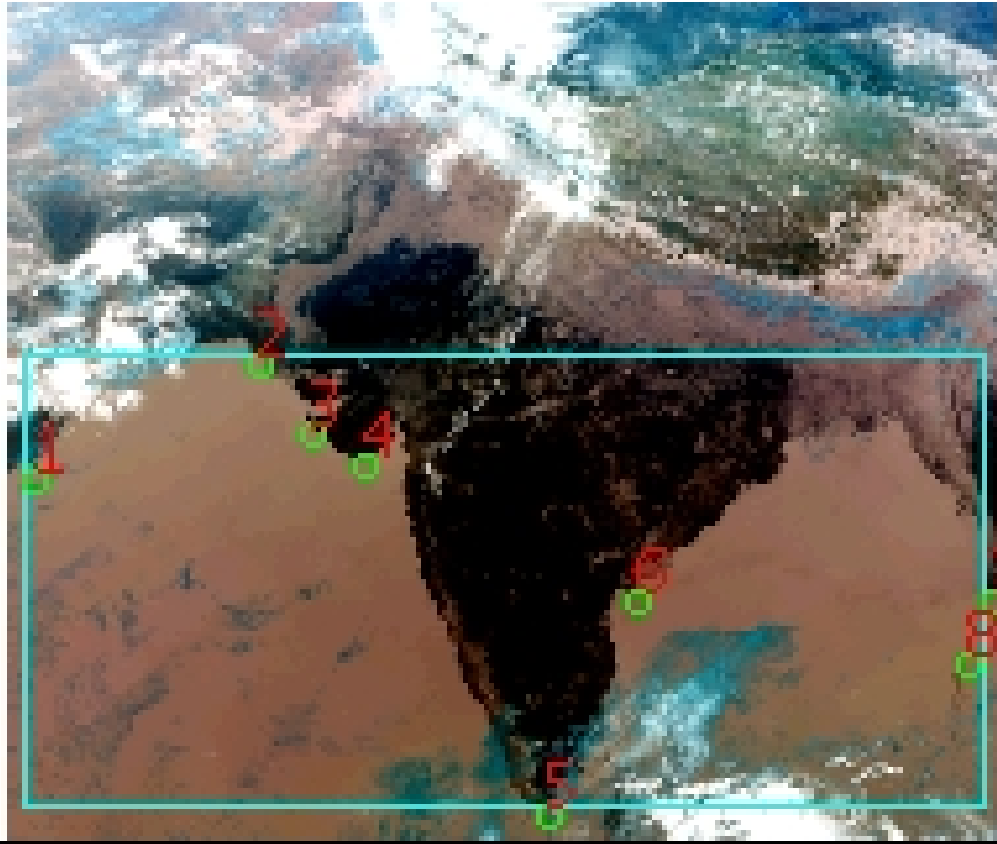


DQE Report: Location Accuracy of INSAT-3DR-SND STANDARD Product 3RSND_27FEB2018_0500

Satellite	INSAT-3DR	No Of Bands	19	Product Type	STANDARD
Sensor	SND	LvlOfProcess	L1B	Selected Band	2-LWIR3
DOP/Time	27-02-18/05:00	Station ID	BES	Field View(deg)	6.136
Res(Y,X) [Km]	(10.0,10.0)	Res(Y,X) [uRad]	(280.0,280.0)		

(41.278N,52.15W)

(41.278N,102.169E)



(6.854S,52.15W)

(6.854S,102.169E)

GCP Distribution overview for 3RSND27FEB20180500L1BSA1

Image Width: 384 Image Height: 320 No Of GCPs: 8

GCP Coverage(%) 53.91 (N-S) 95.12 (E-W)

Location Error(E)

Legend — 0Km < E <= 50Km — 50Km < E <= 100Km — E >100Km

Location Error (In IR Pixels)

	Mean	Direction	Stddev	RMS
Along	1.608	N	0.794	1.794
Across	-0.529	W	0.613	0.810

Scale (Km)

	Pixel Size	Stddev	%variation
Average	10.552	0.311	5.515
Along	11.830	4.136	18.303
Across	10.377	0.219	3.773

Internal Distortion (in IR Pixels)

	PeakToPeak	Mean	Stddev	RMS
Along	2.717	0.204	0.87	0.891
Across	1.579	-0.522	0.50	0.725

Attitude Residuals (Deg)

Pitch	Roll	Yaw
-0.00780	-0.02583	0.08786

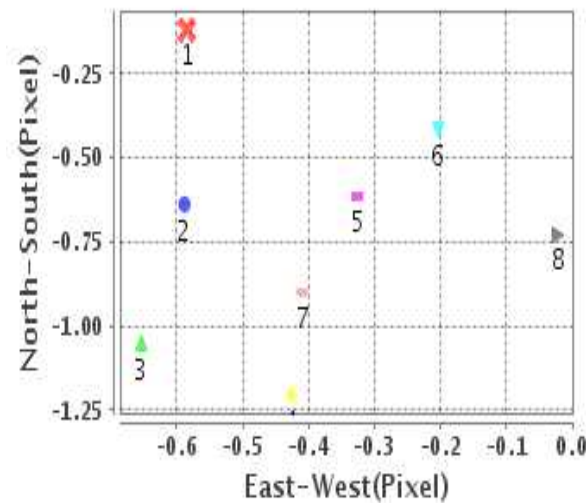
Reference Used

Sensor	Resolution	Projection
ETM	500.00	GGP

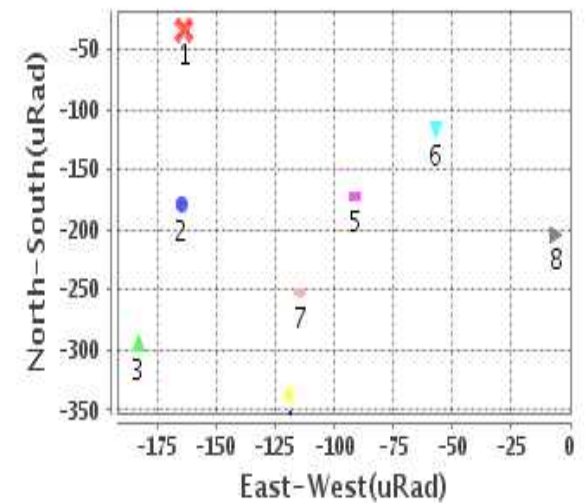
Radial Error (in IR Pixels)

Mean	1.882
Min	1.113
Max	2.856
CE90	2.678

Location Error For GCPs(Pixel)



Location Error For GCPs(uRad)



Detailed Product Information

Ancillary Info

Satellite	INSAT-3DR	Generation Date	27-02-18
Sensor	SND	DQE Date	08-03-2018
PassType	NONE	Aquisition Date	27-02-18
Imaging Mode	FULL_FRAME	Aquisition Time(GMT)	05:00
Sat Altitude(m)	3.6E7	Nominal Altitude(Km)	3.6E7
Station	BES	Predicted Altitude(Km)	-999.99
Sat Location(deg)	-999.99 E	Nominal Center Lat(deg)	0.0
Format	hdf5-1.8.8	Nominal Center Lon(deg)	74.0
LvlOfProcessing	STANDARD	Predicted Center Lat(deg)	-999.99
DP JobId	3RSND_27FEB20	Predicted Center Lon(deg)	-999.99
ProductCode	NONE		
Field View(deg)	6.136		

Projection Parameters

Projection	None
Ellipsoid	WGS_84
Datum	WGS_84
Zone	NotAvail
Semi_Major_Axis(Km)	6378.14
Semi_Minor_Axis(Km)	6356.75
Standard_Parallel1(deg)	-999.99
Standard_Parallel2(deg)	-999.99
Projection_Origin_Lon(deg)	-999.99
Projection_Origin_Lat(deg)	-999.99
Projection_False_Easting(Km)	-999.99
Projection_False_Northing(Km)	-999.99

Scene Center Desc

Centre Lat(deg)	24.066
Center Lon(deg)	77.16
Centre Roll(deg)	-999.0
Centre Pitch(deg)	-999.0
Center Yaw(deg)	-999.0
SunElevation(deg)	-999.99
SunAzimuth(deg)	-999.99
SatElevation(deg)	-999.99
SatAzimuth(deg)	-999.99

Scene Corner Desc

NW_Lat(deg)	41.278
NW_Lon(deg)	52.15
SW_Lat(deg)	6.854
SW_Lon(deg)	52.15
NE_Lat(deg)	41.278
NE_Lon(deg)	102.169
SE_Lat(deg)	6.854
SE_Lon(deg)	102.169

Band Wise Details

	Res_AL(Km)	Res_AX(Km)	Image Height	Image Width
LWIR1	10.0	10.0	320	384
LWIR2	10.0	10.0	320	384
LWIR3	10.0	10.0	320	384
LWIR4	10.0	10.0	320	384
LWIR5	10.0	10.0	320	384
LWIR6	10.0	10.0	320	384

GDQE Computation Base

Projection	MER	Wildpoint Rejection Threshold	2.60	SemiMajorAxis(m)	6378137.00	Mode Of Computation	grid
Ellipsoid	WGS_84		-sigma	SemiMinorAxis(m)	6356752.31	Used Reference Type	REFINSREF
Datum	WGS_84	Unit	pixels	Standardparallel1(deg)	17.0		
Zone	Not Applicable			Standardparallel2(deg)	17.0		

* -999.99 : Not Applicable/Not Available

References

JobId : 3RSND27FEB20180500L1BSA1

(-999.99 - Not Available/Not Computed)

Ref.No	Source	File Name	Resolution (m)	Projection
1	ETM	world_Band1.img	500.0	GGP

Location Accuracy

GCP Distribution Statistics

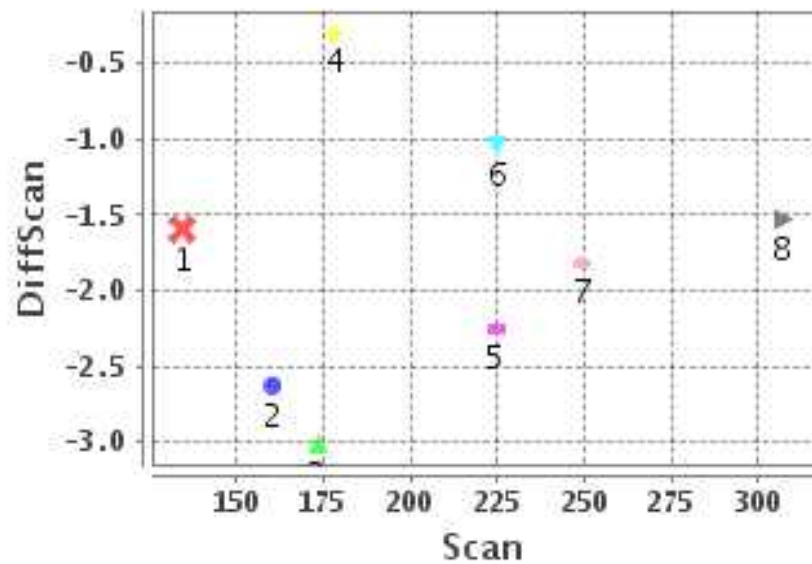
Image Width (pixels) : 384 Image Height (pixels) : 320 No of GCPs : 8

	Mean	StdDev	Min	Max	Coverage(in %)
GCP Scan	206.6	52.2	134.5	307.00	53.91 (N-S)
GCP Pix	196.3	121.2	13.2	378.50	95.12 (E-W)

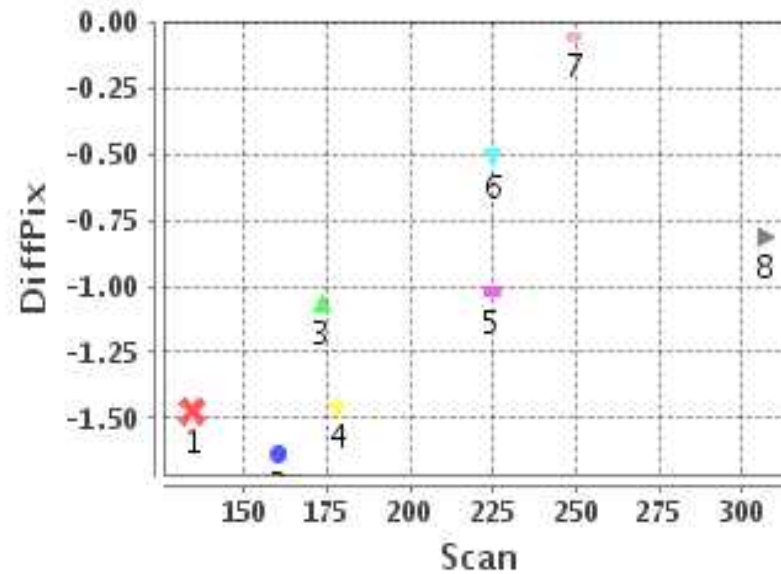
Identified Control Point details : (Differences are Reference - Product)

No	Scan	Pix	DiffScan (line)	DiffPix (pixel)	DifLat (Km)	Dir	DifLon (Km)	Dir	Status
1	178.2	13.2	-0.3	-1.46	1.188	N	13.298	W	Accepted
2	134.5	98.2	-1.6	-1.47	13.110	N	14.763	W	Accepted
3	160.5	119.8	-2.6	-1.63	25.404	N	8.481	W	Accepted
4	173.5	139.8	-3.0	-1.07	28.441	N	2.631	W	Accepted
5	307.0	209.2	-1.5	-0.81	14.729	N	5.386	W	Accepted
6	225.0	242.5	-1.0	-0.51	11.116	N	0.471	E	Accepted
7	224.5	378.5	-2.2	-1.02	18.836	N	2.243	W	Accepted
8	249.2	369.2	-1.8	-0.06	15.847	N	4.044	E	Accepted

Error(Pixels) Vs. GCPScan



Error(Pixels) Vs. GCPScan



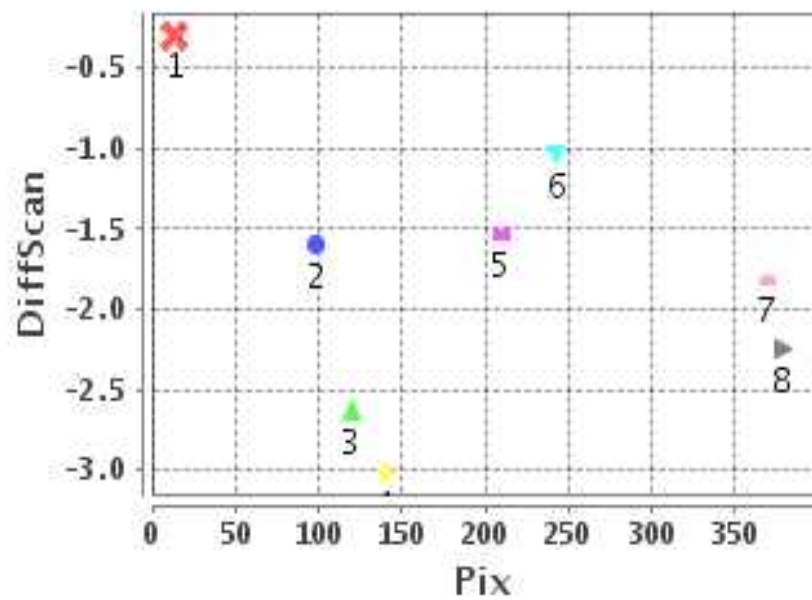
Number Of Points

North	8
South	0
East	2
West	6

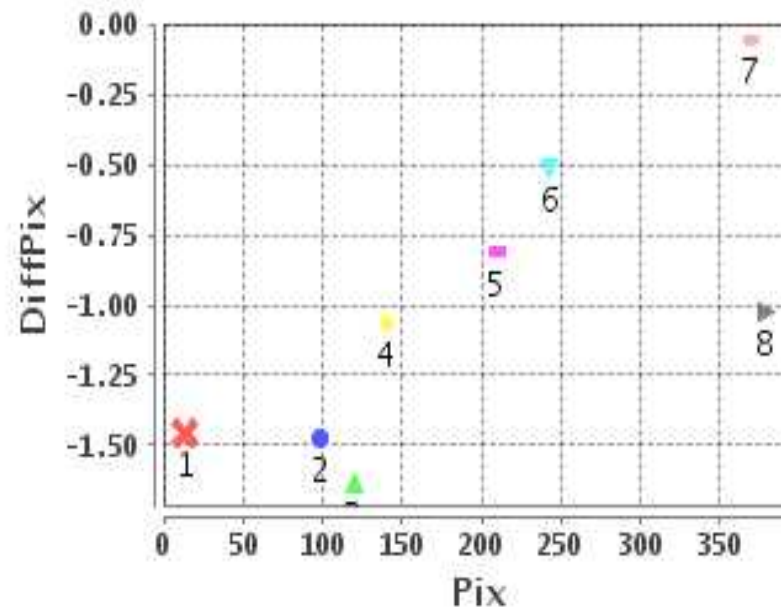
Radial Error (Km)

Mean	1.882
Min	1.113
Max	2.856
CE90	2.678

Error(Pixels) Vs. GCPPix



Error(Pixels) Vs. GCPPix



Location Accuracy

	Mean	StdDev	RMS	Dir	* MinRMS	* MaxRMS
Along(Km)	1.608	0.794	1.794	N	1.588	1.917
Across (Km)	-0.529	0.613	0.810	W	0.661	0.865

Block-Wise Geo location Error Statistics

Location Accuracy,Scale,ID

Scan Range-0-105; Pix Range-0-127		
Number of GCPs	-999	
Location Error(Km)		
Along(Mean,Dir)	-999.99	NotAvail
Across(Mean,Dir)	-999.99	NotAvail
Scale(Km)		
Average Scale (Mean,%Variation)	-999.99	-999.9
Internal Distortion(Pixel)		
Along(Mean,Stddev)	-999.99	-999.99
Across(Mean,Stddev)	-999.99	-999.99

Scan Range-0-105; Pix Range-127-255		
Number of GCPs	-999	
Location Error(Km)		
Along(Mean,Dir)	-999.99	NotAvail
Across(Mean,Dir)	-999.99	NotAvail
Scale(Km)		
Average Scale (Mean,%Variation)	-999.99	-999.9
Internal Distortion(Pixel)		
Along(Mean,Stddev)	-999.99	-999.99
Across(Mean,Stddev)	-999.99	-999.99

Scan Range-0-105; Pix Range-255-384		
Number of GCPs	-999	
Location Error(Km)		
Along(Mean,Dir)	-999.99	NotAvail
Across(Mean,Dir)	-999.99	NotAvail
Scale(Km)		
Average Scale (Mean,%Variation)	-999.99	-999.9
Internal Distortion(Pixel)		
Along(Mean,Stddev)	-999.99	-999.99
Across(Mean,Stddev)	-999.99	-999.99

Scan Range-105-212; Pix Range-0-127		
Number of GCPs	3	
Location Error(Km)		
Along(Mean,Dir)	13.2333	N
Across(Mean,Dir)	-12.18	W
Scale(Km)		
Average Scale (Mean,%Variation)	10.87	8.72
Internal Distortion(Pixel)		
Along(Mean,Stddev)	-0.13	1.16
Across(Mean,Stddev)	0.09	0.08

Scan Range-105-212; Pix Range-127-255		
Number of GCPs	1	
Location Error(Km)		
Along(Mean,Dir)	28.44	N
Across(Mean,Dir)	-2.63	W
Scale(Km)		
Average Scale (Mean,%Variation)	-999.99	-999.9
Internal Distortion(Pixel)		
Along(Mean,Stddev)	-999.99	-999.99
Across(Mean,Stddev)	-999.99	-999.99

Scan Range-105-212; Pix Range-255-384		
Number of GCPs	-999	
Location Error(Km)		
Along(Mean,Dir)	-999.99	NotAvail
Across(Mean,Dir)	-999.99	NotAvail
Scale(Km)		
Average Scale (Mean,%Variation)	-999.99	-999.9
Internal Distortion(Pixel)		
Along(Mean,Stddev)	-999.99	-999.99
Across(Mean,Stddev)	-999.99	-999.99

Scan Range-212-320; Pix Range-0-127		
Number of GCPs	-999	
Location Error(Km)		
Along(Mean,Dir)	-999.99	NotAvail
Across(Mean,Dir)	-999.99	NotAvail
Scale(Km)		
Average Scale (Mean,%Variation)	-999.99	-999.9
Internal Distortion(Pixel)		
Along(Mean,Stddev)	-999.99	-999.99
Across(Mean,Stddev)	-999.99	-999.99

Scan Range-212-320; Pix Range-105-255		
Number of GCPs	2	
Location Error(Km)		
Along(Mean,Dir)	12.9195	N
Across(Mean,Dir)	-2.46	W
Scale(Km)		
Average Scale (Mean,%Variation)	10.13	1.31
Internal Distortion(Pixel)		
Along(Mean,Stddev)	0.49	0.00
Across(Mean,Stddev)	-0.30	0.00

Scan Range-212-320; Pix Range-255-384		
Number of GCPs	2	
Location Error(Km)		
Along(Mean,Dir)	17.34	N
Across(Mean,Dir)	0.90	E
Scale(Km)		
Average Scale (Mean,%Variation)	11.07	10.71
Internal Distortion(Pixel)		
Along(Mean,Stddev)	-0.43	0.00
Across(Mean,Stddev)	0.97	0.00

*-999 : no gcp available

* -999.99 : values are not computed