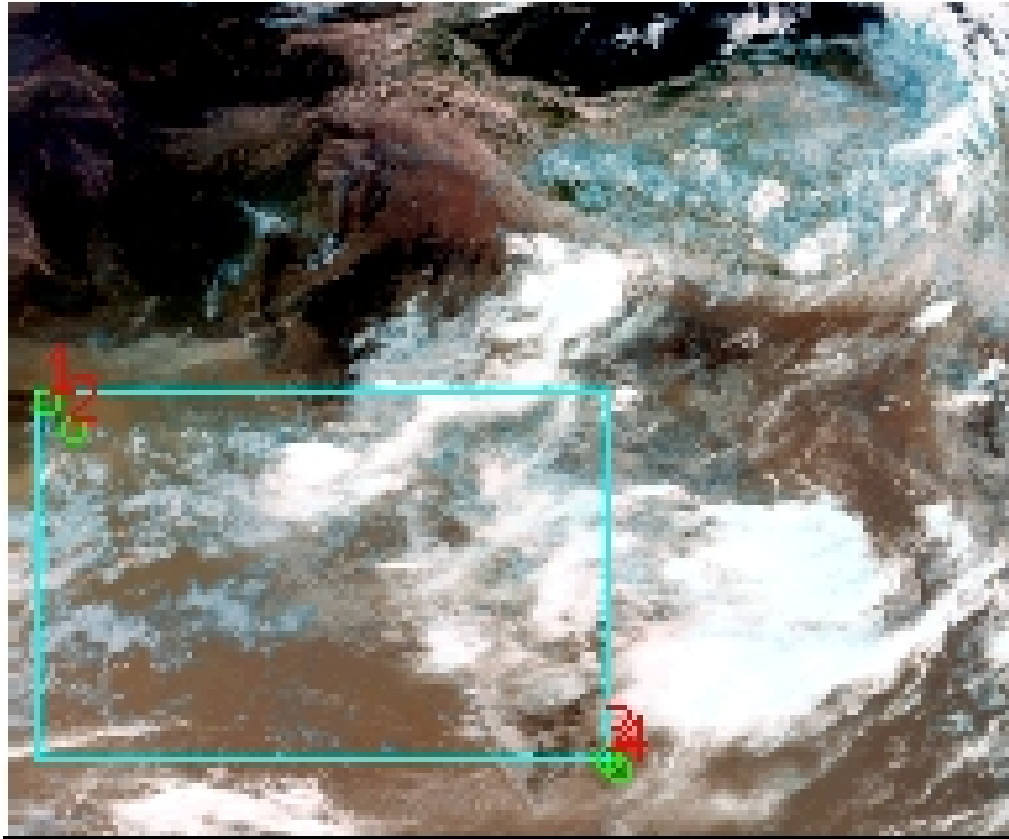


# DQE Report: Location Accuracy of INSAT-3DR-SND STANDARD Product 3RSND\_14JUL2018\_0300

<b>Satellite</b>	INSAT-3DR	<b>No Of Bands</b>	19	<b>Product Type</b>	STANDARD
<b>Sensor</b>	SND	<b>LvlOfProcess</b>	L1B	<b>Selected Band</b>	2-LWIR3
<b>DOP/Time</b>	14-07-18/03:00	<b>Station ID</b>	BES	<b>Field View(deg)</b>	6.136
<b>Res(Y,X) [Km]</b>	(10.0,10.0)	<b>Res(Y,X) [uRad]</b>	(280.0,280.0)		

(42.237N,53.591W)

(42.237N,104.417E)



(6.863S,53.591W)

(6.863S,104.417E)

GCP Distribution overview for 3RSND14JUL20180300L1BSA1

**Image Width:** 384    **Image Height:** 320    **No Of GCPs:** 4

**GCP Coverage(%)**    43.67    **(N-S)** 56.84    **(E-W)**

### Location Error(E)

Legend    — 0Km < E <= 50Km    — 50Km < E <= 100Km    — E >100Km

### Location Error (In IR Pixels)

	Mean	Direction	Stddev	RMS
Along	2.848	N	2.316	3.671
Across	-8.144	W	1.141	8.224

### Scale (Km)

	Pixel Size	Stddev	%variation
Average	10.993	1.273	9.933
Along	-1.000	-1.000	-999.990
Across	-1.000	-1.000	-999.990

### Internal Distortion (in IR Pixels)

	PeakToPeak	Mean	Stddev	RMS
Along	3.455	-2.925	1.45	3.264
Across	1.068	-0.836	0.48	0.965

### Attitude Residuals (Deg)

Pitch	Roll	Yaw
-0.11643	-0.01235	-1.19167

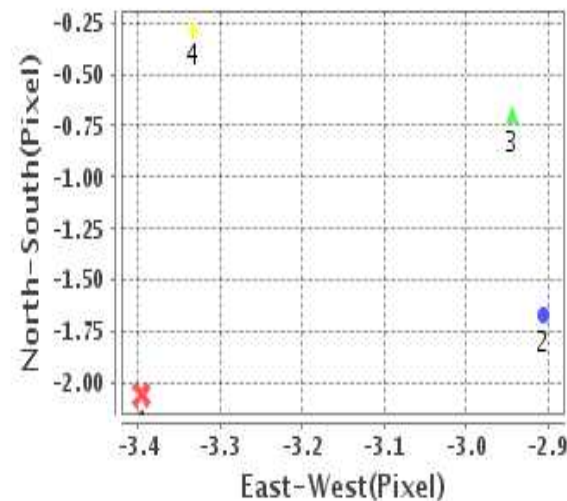
### Reference Used

Sensor	Resolution	Projection
ETM	500.00	GGP

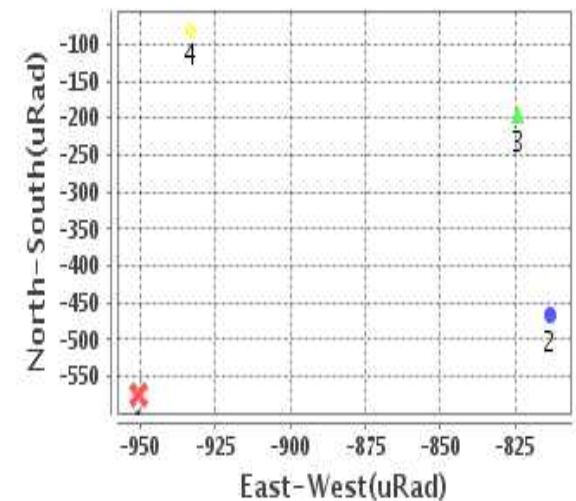
### Radial Error (in IR Pixels)

<b>Mean</b>	8.836
<b>Min</b>	6.811
<b>Max</b>	11.386
<b>CE90</b>	9.412

### Location Error For GCPs(Pixel)



### Location Error For GCPs(uRad)



## Detailed Product Information

### Ancillary Info

<b>Satellite</b>	INSAT-3DR	<b>Generation Date</b>	16-07-18
<b>Sensor</b>	SND	<b>DQE Date</b>	23-07-2018
<b>PassType</b>	NONE	<b>Aquisition Date</b>	14-07-18
<b>Imaging Mode</b>	FULL_FRAME	<b>Aquisition Time(GMT)</b>	03:00
<b>Sat Altitude(m)</b>	3.6E7	<b>Nominal Altitude(Km)</b>	3.6E7
<b>Station</b>	BES	<b>Predicted Altitude(Km)</b>	-999.99
<b>Sat Location(deg)</b>	-999.99 E	<b>Nominal Center Lat(deg)</b>	0.0
<b>Format</b>	hdf5-1.8.8	<b>Nominal Center Lon(deg)</b>	74.0
<b>LvlOfProcessing</b>	STANDARD	<b>Predicted Center Lat(deg)</b>	-999.99
<b>DP JobId</b>	3RSND_14JUL20	<b>Predicted Center Lon(deg)</b>	-999.99
<b>ProductCode</b>	NONE		
<b>Field View(deg)</b>	6.136		

### Projection Parameters

<b>Projection</b>	None
<b>Ellipsoid</b>	WGS_84
<b>Datum</b>	WGS_84
<b>Zone</b>	NotAvail
<b>Semi_Major_Axis(Km)</b>	6378.14
<b>Semi_Minor_Axis(Km)</b>	6356.75
<b>Standard_Parallel1(deg)</b>	-999.99
<b>Standard_Parallel2(deg)</b>	-999.99
<b>Projection_Origin_Lon(deg)</b>	-999.99
<b>Projection_Origin_Lat(deg)</b>	-999.99
<b>Projection_False_Easting(Km)</b>	-999.99
<b>Projection_False_Northing(Km)</b>	-999.99

### Scene Center Desc

<b>Centre Lat(deg)</b>	24.55
<b>Center Lon(deg)</b>	79.004
<b>Centre Roll(deg)</b>	-999.0
<b>Centre Pitch(deg)</b>	-999.0
<b>Center Yaw(deg)</b>	-999.0
<b>SunElevation(deg)</b>	-999.99
<b>SunAzimuth(deg)</b>	-999.99
<b>SatElevation(deg)</b>	-999.99
<b>SatAzimuth(deg)</b>	-999.99

### Scene Corner Desc

<b>NW_Lat(deg)</b>	42.237
<b>NW_Lon(deg)</b>	53.591
<b>SW_Lat(deg)</b>	6.863
<b>SW_Lon(deg)</b>	53.591
<b>NE_Lat(deg)</b>	42.237
<b>NE_Lon(deg)</b>	104.417
<b>SE_Lat(deg)</b>	6.863
<b>SE_Lon(deg)</b>	104.417

### Band Wise Details

	Res_AL(Km)	Res_AX(Km)	Image Height	Image Width
<b>LWIR1</b>	10.0	10.0	320	384
<b>LWIR2</b>	10.0	10.0	320	384
<b>LWIR3</b>	10.0	10.0	320	384
<b>LWIR4</b>	10.0	10.0	320	384
<b>LWIR5</b>	10.0	10.0	320	384
<b>LWIR6</b>	10.0	10.0	320	384

## GDQE Computation Base

<b>Projection</b>	MER	<b>Wildpoint Rejection Threshold</b>	2.60	<b>SemiMajorAxis(m)</b>	6378137.00	<b>Mode Of Computation</b>	grid
<b>Ellipsoid</b>	WGS_84		-sigma	<b>SemiMinorAxis(m)</b>	6356752.31	<b>Used Reference Type</b>	REFINSREF
<b>Datum</b>	WGS_84	<b>Unit</b>	pixels	<b>Standardparallel1(deg)</b>	17.0		
<b>Zone</b>	Not Applicable			<b>Standardparallel2(deg)</b>	17.0		

\* -999.99 : Not Applicable/Not Available

## References

**JobId : 3RSND14JUL20180300L1BSA1**

(-999.99 - Not Available/Not Computed)

Ref.No	Source	File Name	Resolution ( m )	Projection
1	ETM	world_Band1.img	500.0	GGP

## Location Accuracy

### GCP Distribution Statistics

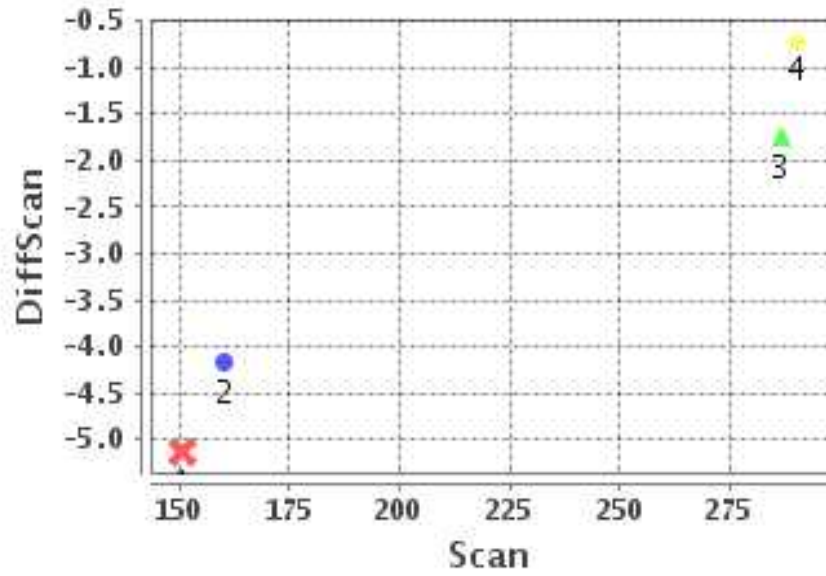
Image Width (pixels) : 384      Image Height (pixels) : 320      No of GCPs : 4

	Mean	StdDev	Min	Max	Coverage(in %)
<b>GCP Scan</b>	221.9	66.7	150.5	290.25	43.67 (N-S)
<b>GCP Pix</b>	123.4	105.6	13.2	231.50	56.84 (E-W)

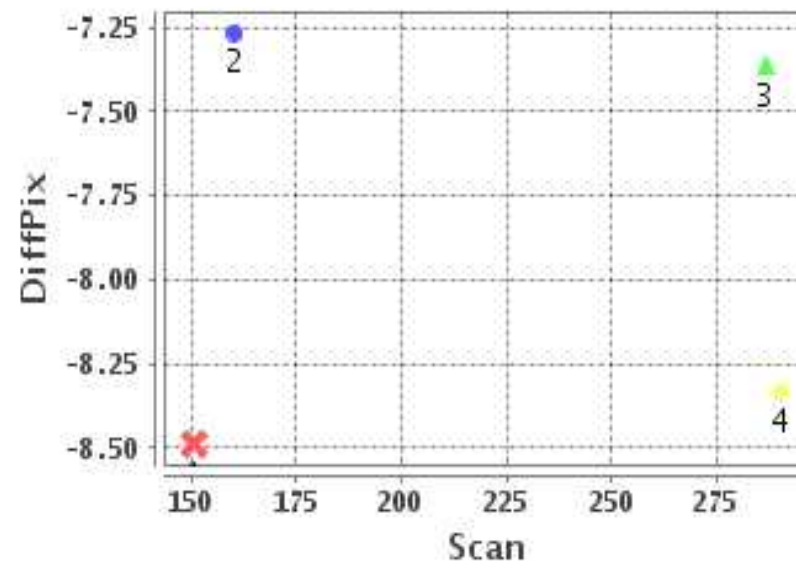
### Identified Control Point details : ( Differences are Reference - Product )

No	Scan	Pix	DiffScan (line)	DiffPix (pixel)	DifLat (Km)	Dir	DifLon (Km)	Dir	Status
1	150.5	13.2	-5.1	-8.49	56.128	N	99.067	W	Accepted
2	160.2	22.5	-4.2	-7.26	46.473	N	81.841	W	Accepted
3	286.8	226.5	-1.8	-7.36	8.606	N	67.566	W	Accepted
4	290.2	231.5	-0.7	-8.33	2.733	N	77.293	W	Accepted

### Error(Pixels) Vs. GCPScan



### Error(Pixels) Vs. GCPScan



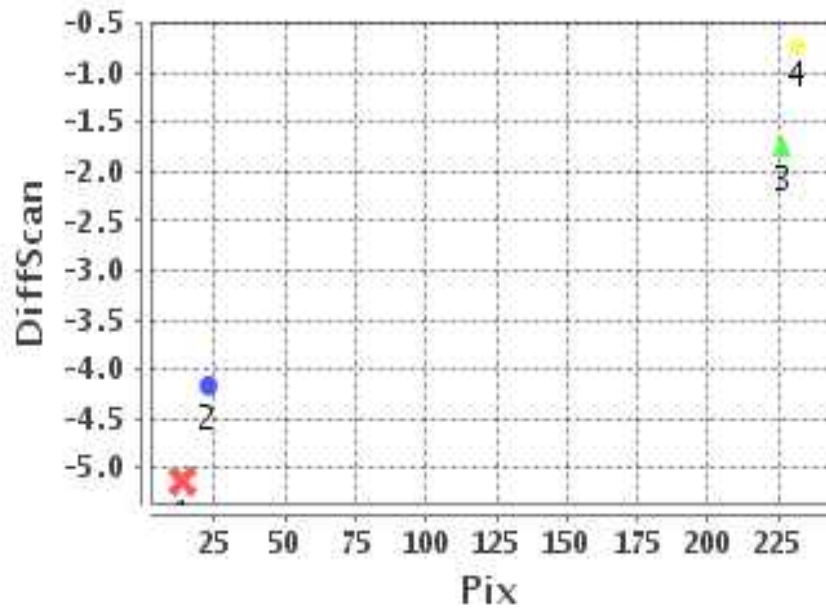
#### Number Of Points

North	4
South	0
East	0
West	4

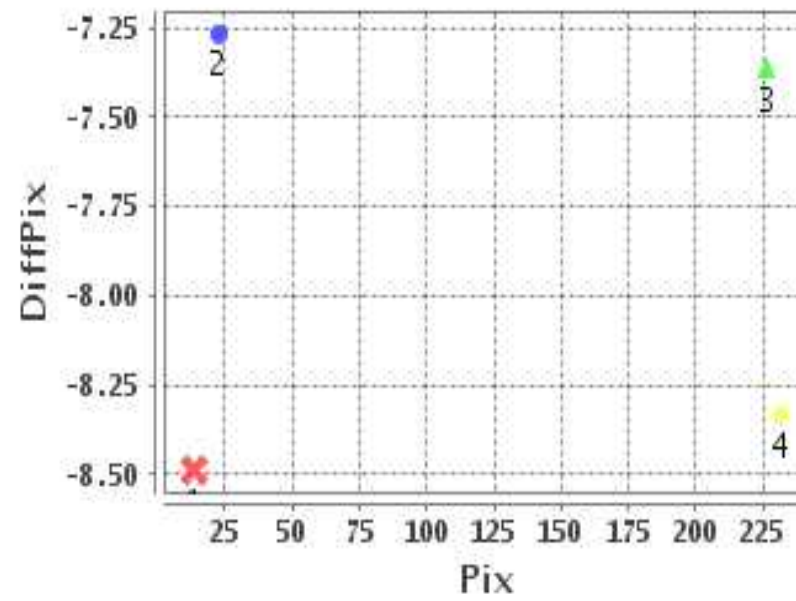
#### Radial Error ( Km )

Mean	8.836
Min	6.811
Max	11.386
CE90	9.412

### Error(Pixels) Vs. GCPPix



### Error(Pixels) Vs. GCPPix



#### Location Accuracy

	Mean	StdDev	RMS	Dir	* MinRMS	* MaxRMS
Along( Km )	2.848	2.316	3.671	N	2.733	4.236
Across ( Km )	-8.144	1.141	8.224	W	7.580	8.658

## Block-Wise Geo location Error Statistics

### Location Accuracy,Scale,ID

<b>Scan Range-0-105; Pix Range-0-127</b>		
Number of GCPs	-999	
<b>Location Error(Km)</b>		
Along(Mean,Dir)	-999.99	NotAvail
Across(Mean,Dir)	-999.99	NotAvail
<b>Scale(Km)</b>		
Average Scale (Mean,%Variation)	-999.99	-999.9
<b>Internal Distortion(Pixel)</b>		
Along(Mean,Stddev)	-999.99	-999.99
Across(Mean,Stddev)	-999.99	-999.99

<b>Scan Range-0-105; Pix Range-127-255</b>		
Number of GCPs	-999	
<b>Location Error(Km)</b>		
Along(Mean,Dir)	-999.99	NotAvail
Across(Mean,Dir)	-999.99	NotAvail
<b>Scale(Km)</b>		
Average Scale (Mean,%Variation)	-999.99	-999.9
<b>Internal Distortion(Pixel)</b>		
Along(Mean,Stddev)	-999.99	-999.99
Across(Mean,Stddev)	-999.99	-999.99

<b>Scan Range-0-105; Pix Range-255-384</b>		
Number of GCPs	-999	
<b>Location Error(Km)</b>		
Along(Mean,Dir)	-999.99	NotAvail
Across(Mean,Dir)	-999.99	NotAvail
<b>Scale(Km)</b>		
Average Scale (Mean,%Variation)	-999.99	-999.9
<b>Internal Distortion(Pixel)</b>		
Along(Mean,Stddev)	-999.99	-999.99
Across(Mean,Stddev)	-999.99	-999.99

<b>Scan Range-105-212; Pix Range-0-127</b>		
Number of GCPs	2	
<b>Location Error(Km)</b>		
Along(Mean,Dir)	51.305	N
Across(Mean,Dir)	-90.45	W
<b>Scale(Km)</b>		
Average Scale (Mean,%Variation)	13.74	37.40
<b>Internal Distortion(Pixel)</b>		
Along(Mean,Stddev)	-0.97	0.00
Across(Mean,Stddev)	-1.22	0.00

<b>Scan Range-105-212; Pix Range-127-255</b>		
Number of GCPs	-999	
<b>Location Error(Km)</b>		
Along(Mean,Dir)	-999.99	NotAvail
Across(Mean,Dir)	-999.99	NotAvail
<b>Scale(Km)</b>		
Average Scale (Mean,%Variation)	-999.99	-999.9
<b>Internal Distortion(Pixel)</b>		
Along(Mean,Stddev)	-999.99	-999.99
Across(Mean,Stddev)	-999.99	-999.99

<b>Scan Range-105-212; Pix Range-255-384</b>		
Number of GCPs	-999	
<b>Location Error(Km)</b>		
Along(Mean,Dir)	-999.99	NotAvail
Across(Mean,Dir)	-999.99	NotAvail
<b>Scale(Km)</b>		
Average Scale (Mean,%Variation)	-999.99	-999.9
<b>Internal Distortion(Pixel)</b>		
Along(Mean,Stddev)	-999.99	-999.99
Across(Mean,Stddev)	-999.99	-999.99

<b>Scan Range-212-320; Pix Range-0-127</b>		
Number of GCPs	-999	
<b>Location Error(Km)</b>		
Along(Mean,Dir)	-999.99	NotAvail
Across(Mean,Dir)	-999.99	NotAvail
<b>Scale(Km)</b>		
Average Scale (Mean,%Variation)	-999.99	-999.9
<b>Internal Distortion(Pixel)</b>		
Along(Mean,Stddev)	-999.99	-999.99
Across(Mean,Stddev)	-999.99	-999.99

<b>Scan Range-212-320; Pix Range-105-255</b>		
Number of GCPs	2	
<b>Location Error(Km)</b>		
Along(Mean,Dir)	5.67	N
Across(Mean,Dir)	-72.43	W
<b>Scale(Km)</b>		
Average Scale (Mean,%Variation)	9.73	2.72
<b>Internal Distortion(Pixel)</b>		
Along(Mean,Stddev)	-1.04	0.00
Across(Mean,Stddev)	0.97	0.00

<b>Scan Range-212-320; Pix Range-255-384</b>		
Number of GCPs	-999	
<b>Location Error(Km)</b>		
Along(Mean,Dir)	-999.99	NotAvail
Across(Mean,Dir)	-999.99	NotAvail
<b>Scale(Km)</b>		
Average Scale (Mean,%Variation)	-999.99	-999.9
<b>Internal Distortion(Pixel)</b>		
Along(Mean,Stddev)	-999.99	-999.99
Across(Mean,Stddev)	-999.99	-999.99

\*-999 : no gcp available

\* -999.99 : values are not computed