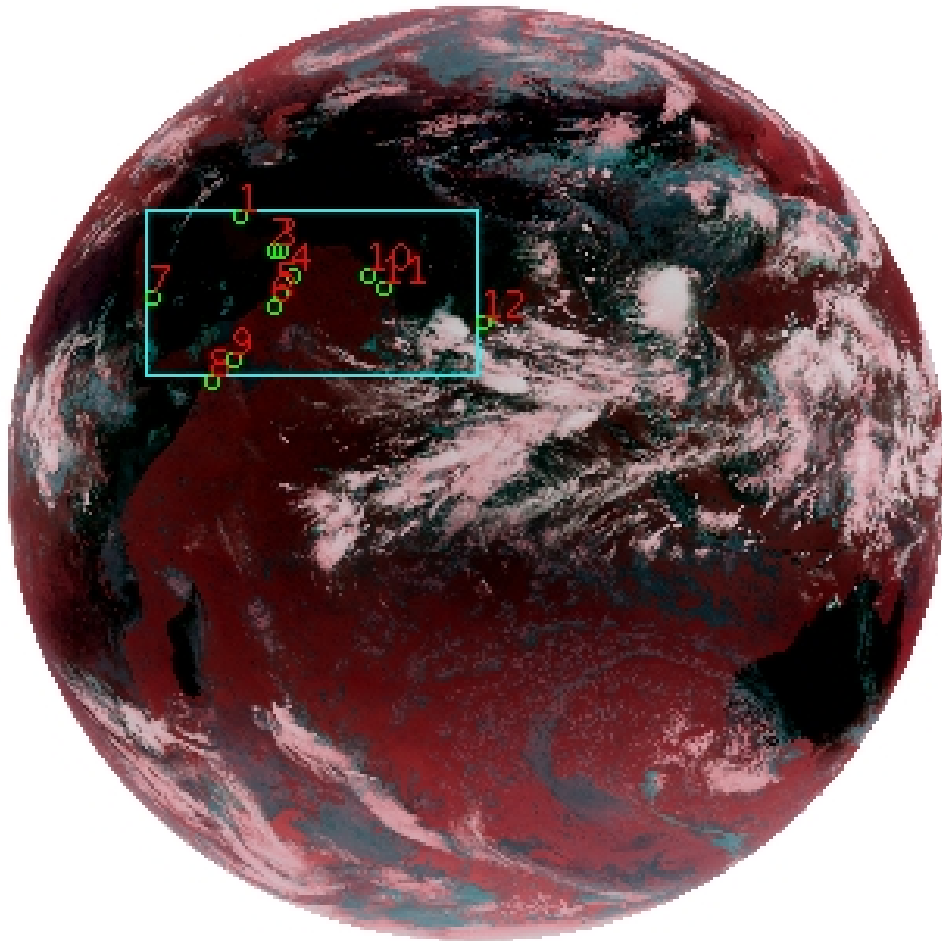


# DQE Report: Location Accuracy of INSAT-3D-IMG STANDARD(FULL DISK) Product 3DIMG\_25SEP2017\_0600

**Satellite** INSAT-3D      **No Of Bands** 6      **Product Type** STANDARD  
**Sensor** IMG      **LvlOfProcess** L1B      **Selected Band** 2-TIR1  
**DOP/Time** 25-09-17/06:00      **Station ID** BES      **Field View(deg)** 17.974  
**Res(Y,X) [Km]** (4.0,4.0)      **Res(Y,X) [uRad]** (112.0,112.0)

(81.042N,0.843W)

(81.042N,163.157E)



(-81.042S,0.843W)

(-81.042S,163.157E)

GCP Distribution overview for 3DIMG25SEP20170600L1BSTD

**Image Width:** 2805      **Image Height:** 2816      **No Of GCPs:** 12

**GCP Coverage(%)**      17.01      **(N-S)** 34.02      **(E-W)**

## Location Error(E)

**Legend**      — 0Km < E <= 50Km      — 50Km < E <= 100Km      — E >100Km

## Location Error (In IR Pixels)

	Mean	Direction	Stddev	RMS
Along	0.647	N	1.537	1.668
Across	-2.848	W	1.350	3.151

## Scale (Km)

	Pixel Size	Stddev	%variation
Average	4.815	0.622	20.372
Along	5.216	2.293	30.397
Across	5.238	1.590	30.937

## Internal Distortion (in IR Pixels)

	PeakToPeak	Mean	Stddev	RMS
Along	3.756	0.624	1.23	1.380
Across	2.072	2.077	0.69	2.187

## Attitude Residuals (Deg)

Pitch	Roll	Yaw
-0.02651	-0.02312	0.25378

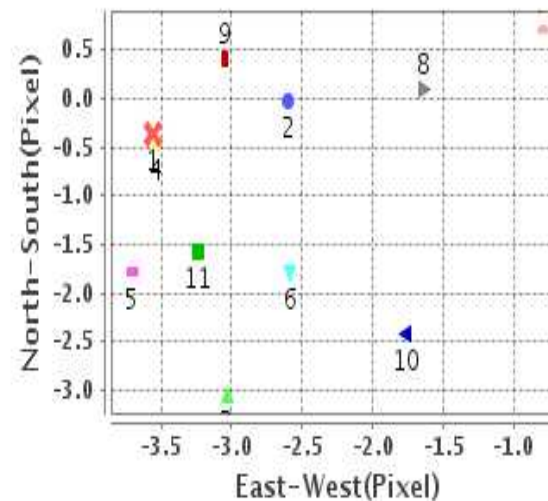
## Reference Used

Sensor	Resolution	Projection
ETM	500.00	GGP

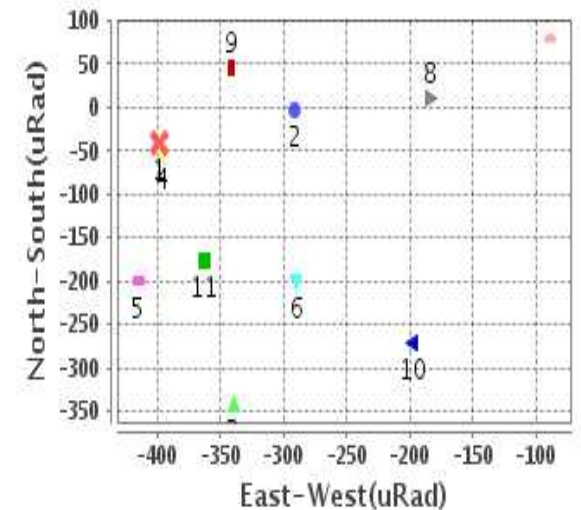
## Radial Error (in IR Pixels)

<b>Mean</b>	3.325
<b>Min</b>	1.176
<b>Max</b>	5.780
<b>CE90</b>	4.356

## Location Error For GCPs(Pixel)



## Location Error For GCPs(uRad)



## Detailed Product Information

### Ancillary Info

<b>Satellite</b>	INSAT-3D	<b>Generation Date</b>	25-09-17
<b>Sensor</b>	IMG	<b>DQE Date</b>	27-09-2017
<b>PassType</b>	NONE	<b>Aquisition Date</b>	25-09-17
<b>Imaging Mode</b>	FULL_FRAME	<b>Aquisition Time(GMT)</b>	06:00
<b>Sat Altitude(m)</b>	3.6E7	<b>Nominal Altitude(Km)</b>	3.6E7
<b>Station</b>	BES	<b>Predicted Altitude(Km)</b>	-999.99
<b>Sat Location(deg)</b>	-999.99 E	<b>Nominal Center Lat(deg)</b>	0.0
<b>Format</b>	hdf5-1.8.8	<b>Nominal Center Lon(deg)</b>	82.0
<b>LvlOfProcessing</b>	STANDARD(FULL	<b>Predicted Center Lat(deg)</b>	-999.99
<b>DP JobId</b>	3DIMG_25SEP20	<b>Predicted Center Lon(deg)</b>	-999.99
<b>ProductCode</b>	NONE		
<b>Field View(deg)</b>	17.974		

### Projection Parameters

<b>Projection</b>	None
<b>Ellipsoid</b>	WGS_84
<b>Datum</b>	WGS_84
<b>Zone</b>	NotAvail
<b>Semi_Major_Axis(Km)</b>	6378.14
<b>Semi_Minor_Axis(Km)</b>	6356.75
<b>Standard_Parallel1(deg)</b>	-999.99
<b>Standard_Parallel2(deg)</b>	-999.99
<b>Projection_Origin_Lon(deg)</b>	-999.99
<b>Projection_Origin_Lat(deg)</b>	-999.99
<b>Projection_False_Easting(Km)</b>	-999.99
<b>Projection_False_Northing(Km)</b>	-999.99

### Scene Center Desc

<b>Centre Lat(deg)</b>	0.0
<b>Center Lon(deg)</b>	82.0
<b>Centre Roll(deg)</b>	-999.0
<b>Centre Pitch(deg)</b>	-999.0
<b>Center Yaw(deg)</b>	-999.0
<b>SunElevation(deg)</b>	-999.99
<b>SunAzimuth(deg)</b>	-999.99
<b>SatElevation(deg)</b>	-999.99
<b>SatAzimuth(deg)</b>	-999.99

### Scene Corner Desc

<b>NW_Lat(deg)</b>	81.042
<b>NW_Lon(deg)</b>	0.843
<b>SW_Lat(deg)</b>	-81.042
<b>SW_Lon(deg)</b>	0.843
<b>NE_Lat(deg)</b>	81.042
<b>NE_Lon(deg)</b>	163.157
<b>SE_Lat(deg)</b>	-81.042
<b>SE_Lon(deg)</b>	163.157

### Band Wise Details

	Res_AL(Km)	Res_AX(Km)	Image Height	Image Width
<b>MIR</b>	4.0	4.0	2816	2805
<b>SWIR</b>	1.0	1.0	11264	11220
<b>TIR1</b>	4.0	4.0	2816	2805
<b>TIR2</b>	4.0	4.0	2816	2805
<b>VIS</b>	1.0	1.0	11264	11220
<b>WV</b>	8.0	8.0	1408	1402

## GDQE Computation Base

<b>Projection</b>	MER	<b>Wildpoint Rejection Threshold</b>	2.60	<b>SemiMajorAxis(m)</b>	6378137.00	<b>Mode Of Computation</b>	grid
<b>Ellipsoid</b>	WGS_84		-sigma	<b>SemiMinorAxis(m)</b>	6356752.31	<b>Used Reference Type</b>	REFINSREF
<b>Datum</b>	WGS_84	<b>Unit</b>	pixels	<b>Standardparallel1(deg)</b>	17.0		
<b>Zone</b>	Not Applicable			<b>Standardparallel2(deg)</b>	17.0		

\* -999.99 : Not Applicable/Not Available

## References

**JobId : 3DIMG25SEP20170600L1BSTD**

(-999.99 - Not Available/Not Computed)

Ref.No	Source	File Name	Resolution ( m )	Projection
1	ETM	world_Band1.img	500.0	GGP

## Location Accuracy

### GCP Distribution Statistics

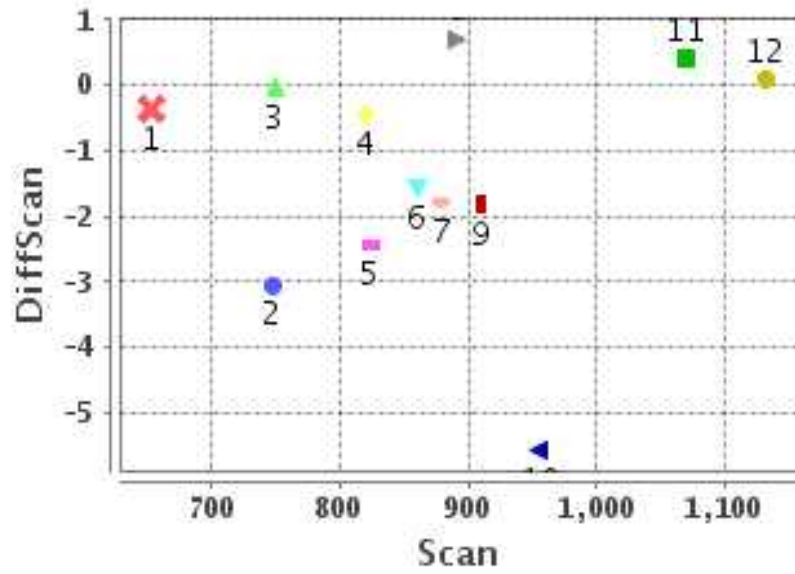
Image Width (pixels) : 2805      Image Height (pixels) : 2816      No of GCPs : 12

	Mean	StdDev	Min	Max	Coverage(in %)
<b>GCP Scan</b>	874.0	128.8	652.5	1131.50	17.01 (N-S)
<b>GCP Pix</b>	850.5	240.4	455.2	1409.50	34.02 (E-W)

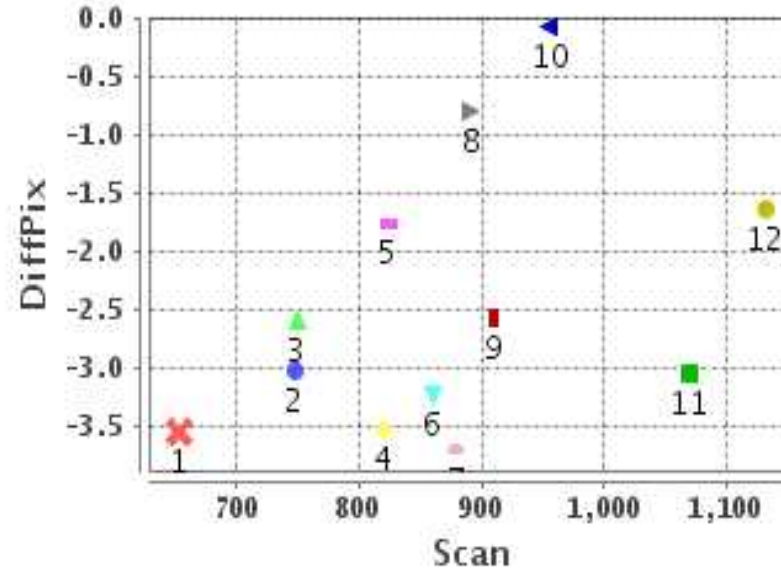
### Identified Control Point details : ( Differences are Reference - Product )

No	Scan	Pix	DiffScan (line)	DiffPix (pixel)	DifLat (Km)	Dir	DifLon (Km)	Dir	Status
1	652.5	710.2	-0.4	-3.56	0.223	N	19.104	W	Accepted
2	749.2	802.8	-0.0	-2.60	1.280	S	9.603	W	Accepted
3	747.2	825.2	-3.0	-3.03	15.079	N	17.528	W	Accepted
4	819.5	863.0	-0.5	-3.53	0.502	N	17.417	W	Accepted
5	879.5	826.8	-1.8	-3.71	5.790	N	14.856	W	Accepted
6	909.2	802.8	-1.8	-2.58	6.953	N	9.910	W	Accepted
7	890.8	455.2	0.7	-0.80	6.290	S	1.436	W	Accepted
8	1131.5	628.8	0.1	-1.64	2.593	S	3.923	W	Accepted
9	1069.8	686.5	0.4	-3.05	4.275	S	11.616	W	Accepted
10	823.5	1075.2	-2.4	-1.77	9.488	N	7.637	W	Accepted
11	859.5	1120.5	-1.6	-3.24	4.870	N	12.260	W	Accepted
12	955.2	1409.5	-5.6	-0.08	22.392	N	1.805	E	Rejected

### Error(Pixels) Vs. GCPScan



### Error(Pixels) Vs. GCPScan



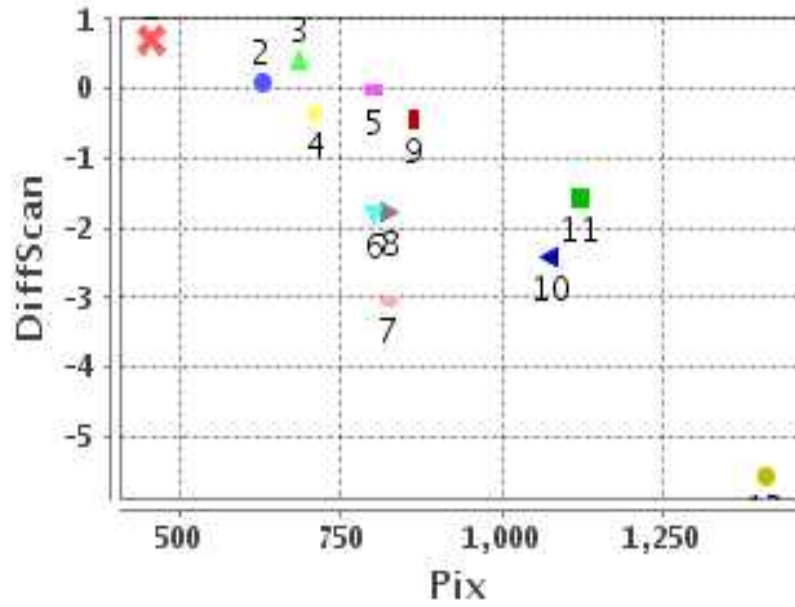
#### Number Of Points

North	7
South	4
East	0
West	11

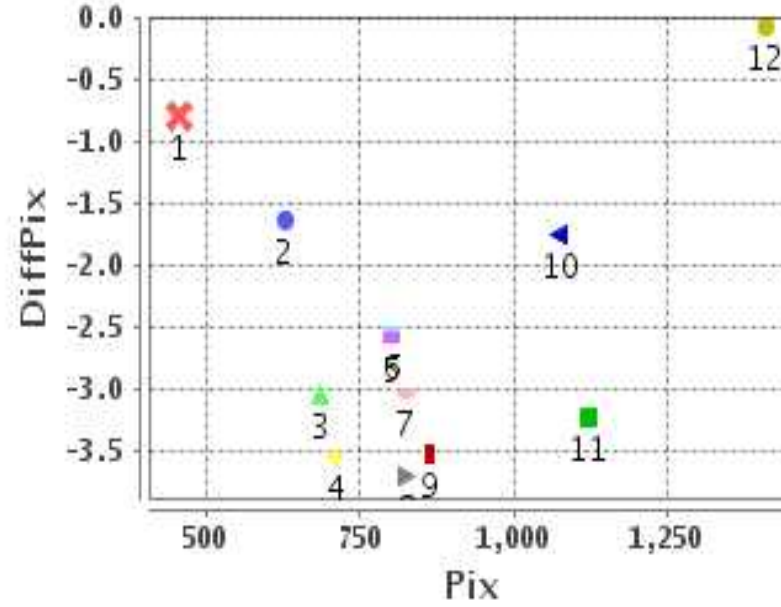
#### Radial Error ( Km )

Mean	3.325
Min	1.176
Max	5.780
CE90	4.356

### Error(Pixels) Vs. GCPPix



### Error(Pixels) Vs. GCPPix



#### Location Accuracy

	Mean	StdDev	RMS	Dir	* MinRMS	* MaxRMS
Along( Km )	0.647	1.537	1.668	N	1.280	1.749
Across ( Km )	-2.848	1.350	3.151	W	2.940	3.303

## Block-Wise Geo location Error Statistics

### Location Accuracy,Scale,ID

<b>Scan Range-0-937; Pix Range-0-934</b>		
Number of GCPs	7	
<b>Location Error(Km)</b>		
Along(Mean,Dir)	2.99571	N
Across(Mean,Dir)	-12.84	W
<b>Scale(Km)</b>		
Average Scale (Mean,%Variation)	5.20	29.88
<b>Internal Distortion(Pixel)</b>		
Along(Mean,Stddev)	0.70	1.26
Across(Mean,Stddev)	2.37	0.46

<b>Scan Range-0-937; Pix Range-934-1869</b>		
Number of GCPs	2	
<b>Location Error(Km)</b>		
Along(Mean,Dir)	7.18	N
Across(Mean,Dir)	-9.95	W
<b>Scale(Km)</b>		
Average Scale (Mean,%Variation)	4.65	16.32
<b>Internal Distortion(Pixel)</b>		
Along(Mean,Stddev)	-0.84	0.00
Across(Mean,Stddev)	1.47	0.00

<b>Scan Range-0-937; Pix Range-1869-2805</b>		
Number of GCPs	-999	
<b>Location Error(Km)</b>		
Along(Mean,Dir)	-999.99	NotAvail
Across(Mean,Dir)	-999.99	NotAvail
<b>Scale(Km)</b>		
Average Scale (Mean,%Variation)	-999.99	-999.9
<b>Internal Distortion(Pixel)</b>		
Along(Mean,Stddev)	-999.99	-999.99
Across(Mean,Stddev)	-999.99	-999.99

<b>Scan Range-937-1876; Pix Range-0-934</b>		
Number of GCPs	2	
<b>Location Error(Km)</b>		
Along(Mean,Dir)	-3.435	S
Across(Mean,Dir)	-7.77	W
<b>Scale(Km)</b>		
Average Scale (Mean,%Variation)	4.10	2.56
<b>Internal Distortion(Pixel)</b>		
Along(Mean,Stddev)	0.30	0.00
Across(Mean,Stddev)	1.42	0.00

<b>Scan Range-937-1876; Pix Range-934-1869</b>		
Number of GCPs	-999	
<b>Location Error(Km)</b>		
Along(Mean,Dir)	-999.99	NotAvail
Across(Mean,Dir)	-999.99	NotAvail
<b>Scale(Km)</b>		
Average Scale (Mean,%Variation)	-999.99	-999.9
<b>Internal Distortion(Pixel)</b>		
Along(Mean,Stddev)	-999.99	-999.99
Across(Mean,Stddev)	-999.99	-999.99

<b>Scan Range-937-1876; Pix Range-1869-2805</b>		
Number of GCPs	-999	
<b>Location Error(Km)</b>		
Along(Mean,Dir)	-999.99	NotAvail
Across(Mean,Dir)	-999.99	NotAvail
<b>Scale(Km)</b>		
Average Scale (Mean,%Variation)	-999.99	-999.9
<b>Internal Distortion(Pixel)</b>		
Along(Mean,Stddev)	-999.99	-999.99
Across(Mean,Stddev)	-999.99	-999.99

<b>Scan Range-1876-2816; Pix Range-0-934</b>		
Number of GCPs	-999	
<b>Location Error(Km)</b>		
Along(Mean,Dir)	-999.99	NotAvail
Across(Mean,Dir)	-999.99	NotAvail
<b>Scale(Km)</b>		
Average Scale (Mean,%Variation)	-999.99	-999.9
<b>Internal Distortion(Pixel)</b>		
Along(Mean,Stddev)	-999.99	-999.99
Across(Mean,Stddev)	-999.99	-999.99

<b>Scan Range-1876-2816; Pix Range-937-1869</b>		
Number of GCPs	-999	
<b>Location Error(Km)</b>		
Along(Mean,Dir)	-999.99	NotAvail
Across(Mean,Dir)	-999.99	NotAvail
<b>Scale(Km)</b>		
Average Scale (Mean,%Variation)	-999.99	-999.9
<b>Internal Distortion(Pixel)</b>		
Along(Mean,Stddev)	-999.99	-999.99
Across(Mean,Stddev)	-999.99	-999.99

<b>Scan Range-1876-2816; Pix Range-1869-2805</b>		
Number of GCPs	-999	
<b>Location Error(Km)</b>		
Along(Mean,Dir)	-999.99	NotAvail
Across(Mean,Dir)	-999.99	NotAvail
<b>Scale(Km)</b>		
Average Scale (Mean,%Variation)	-999.99	-999.9
<b>Internal Distortion(Pixel)</b>		
Along(Mean,Stddev)	-999.99	-999.99
Across(Mean,Stddev)	-999.99	-999.99

\*-999 : no gcp available

\* -999.99 : values are not computed