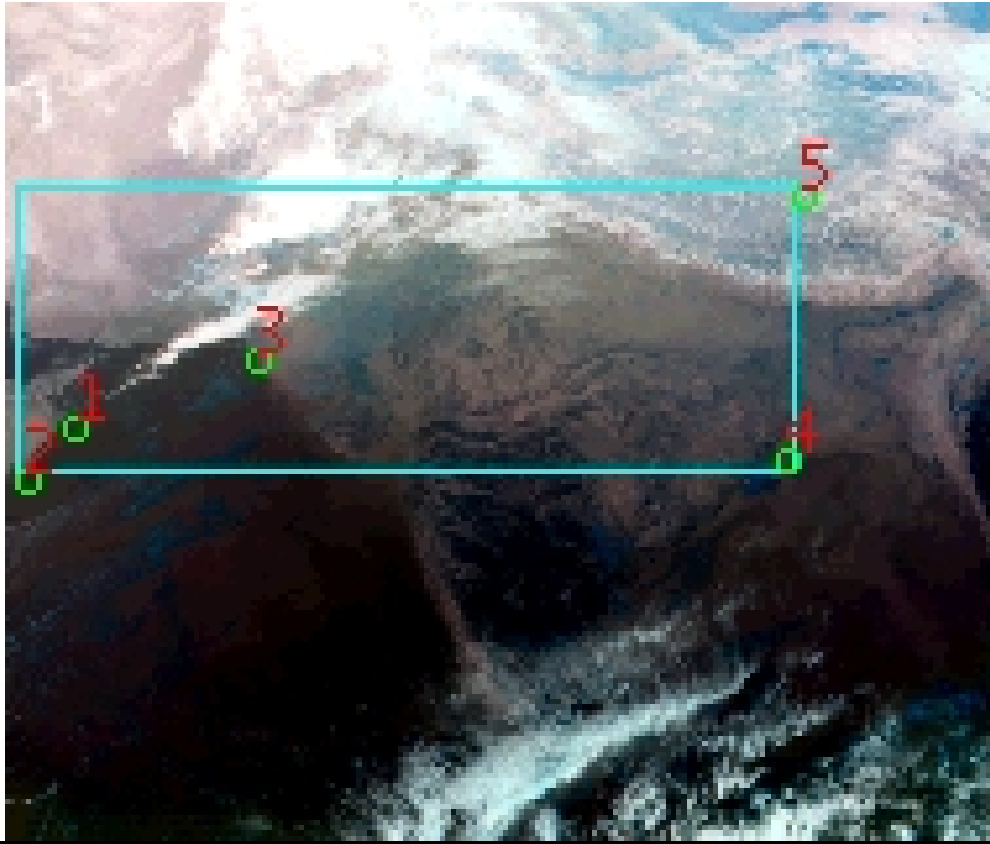


# DQE Report: Location Accuracy of INSAT-3DR-SND STANDARD Product 3RSND\_20JAN2019\_0300

**Satellite** INSAT-3DR    **No Of Bands** 19    **Product Type** STANDARD  
**Sensor** SND    **LvlOfProcess** L1B    **Selected Band** 2-LWIR3  
**DOP/Time** 20-01-19/03:00    **Station ID** BES    **Field View(deg)** 6.136  
**Res(Y,X) [Km]** (10.0,10.0)    **Res(Y,X) [uRad]** (280.0,280.0)

(41.258N,52.059W)

(41.258N,102.058E)



(6.849S,52.059W)

(6.849S,102.058E)

GCP Distribution overview for 3RSND20JAN20190300L1BSA1

**Image Width:** 384    **Image Height:** 320    **No Of GCPs:** 5

**GCP Coverage(%)** 33.52    **(N-S)** 77.02    **(E-W)**

## Location Error(E)

**Legend**    — 0Km < E <= 50Km    — 50Km < E <= 100Km    — E >100Km

## Location Error (In IR Pixels)

	Mean	Direction	Stddev	RMS
Along	0.498	N	0.458	0.677
Across	-2.142	W	0.655	2.239

## Scale (Km)

	Pixel Size	Stddev	%variation
Average	11.013	0.747	10.126
Along	-1.000	-1.000	-999.990
Across	-1.000	-1.000	-999.990

## Internal Distortion (in IR Pixels)

	PeakToPeak	Mean	Stddev	RMS
Along	0.842	0.612	0.34	0.702
Across	1.488	0.207	0.61	0.647

## Attitude Residuals (Deg)

Pitch	Roll	Yaw
-0.03241	-0.00810	0.01147

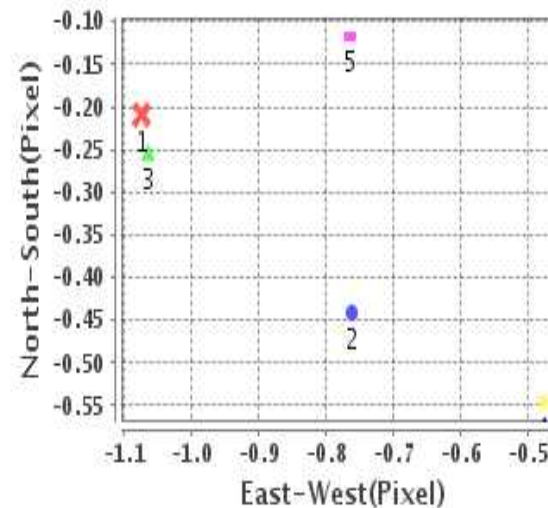
## Reference Used

Sensor	Resolution	Projection
ETM	500.00	GGP

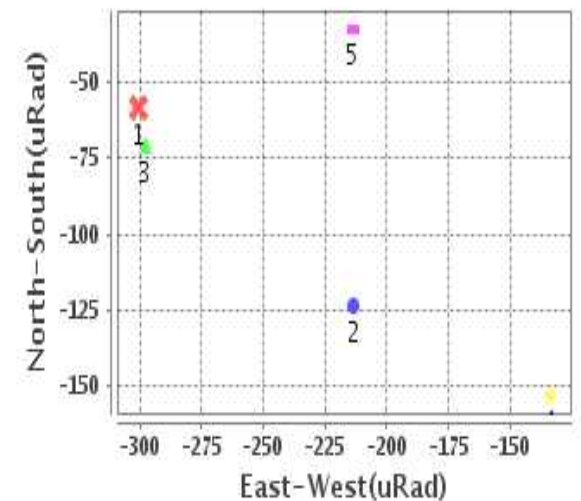
## Radial Error (in IR Pixels)

<b>Mean</b>	2.297
<b>Min</b>	1.597
<b>Max</b>	2.921
<b>CE90</b>	2.536

## Location Error For GCPs(Pixel)



## Location Error For GCPs(uRad)



## Detailed Product Information

### Ancillary Info

<b>Satellite</b>	INSAT-3DR	<b>Generation Date</b>	20-01-19
<b>Sensor</b>	SND	<b>DQE Date</b>	21-01-2019
<b>PassType</b>	NONE	<b>Aquisition Date</b>	20-01-19
<b>Imaging Mode</b>	FULL_FRAME	<b>Aquisition Time(GMT)</b>	03:00
<b>Sat Altitude(m)</b>	3.6E7	<b>Nominal Altitude(Km)</b>	3.6E7
<b>Station</b>	BES	<b>Predicted Altitude(Km)</b>	-999.99
<b>Sat Location(deg)</b>	-999.99 E	<b>Nominal Center Lat(deg)</b>	0.0
<b>Format</b>	hdf5-1.8.8	<b>Nominal Center Lon(deg)</b>	74.0
<b>LvlOfProcessing</b>	STANDARD	<b>Predicted Center Lat(deg)</b>	-999.99
<b>DP JobId</b>	3RSND_20JAN20	<b>Predicted Center Lon(deg)</b>	-999.99
<b>ProductCode</b>	NONE		
<b>Field View(deg)</b>	6.136		

### Projection Parameters

<b>Projection</b>	None
<b>Ellipsoid</b>	WGS_84
<b>Datum</b>	WGS_84
<b>Zone</b>	NotAvail
<b>Semi_Major_Axis(Km)</b>	6378.14
<b>Semi_Minor_Axis(Km)</b>	6356.75
<b>Standard_Parallel1(deg)</b>	-999.99
<b>Standard_Parallel2(deg)</b>	-999.99
<b>Projection_Origin_Lon(deg)</b>	-999.99
<b>Projection_Origin_Lat(deg)</b>	-999.99
<b>Projection_False_Easting(Km)</b>	-999.99
<b>Projection_False_Northing(Km)</b>	-999.99

### Scene Center Desc

<b>Centre Lat(deg)</b>	24.053
<b>Center Lon(deg)</b>	77.058
<b>Centre Roll(deg)</b>	-999.0
<b>Centre Pitch(deg)</b>	-999.0
<b>Center Yaw(deg)</b>	-999.0
<b>SunElevation(deg)</b>	-999.99
<b>SunAzimuth(deg)</b>	-999.99
<b>SatElevation(deg)</b>	-999.99
<b>SatAzimuth(deg)</b>	-999.99

### Scene Corner Desc

<b>NW_Lat(deg)</b>	41.258
<b>NW_Lon(deg)</b>	52.059
<b>SW_Lat(deg)</b>	6.849
<b>SW_Lon(deg)</b>	52.059
<b>NE_Lat(deg)</b>	41.258
<b>NE_Lon(deg)</b>	102.058
<b>SE_Lat(deg)</b>	6.849
<b>SE_Lon(deg)</b>	102.058

### Band Wise Details

	Res_AL(Km)	Res_AX(Km)	Image Height	Image Width
<b>LWIR1</b>	10.0	10.0	320	384
<b>LWIR2</b>	10.0	10.0	320	384
<b>LWIR3</b>	10.0	10.0	320	384
<b>LWIR4</b>	10.0	10.0	320	384
<b>LWIR5</b>	10.0	10.0	320	384
<b>LWIR6</b>	10.0	10.0	320	384

## GDQE Computation Base

<b>Projection</b>	MER	<b>Wildpoint Rejection Threshold</b>	2.60	<b>SemiMajorAxis(m)</b>	6378137.00	<b>Mode Of Computation</b>	grid
<b>Ellipsoid</b>	WGS_84		-sigma	<b>SemiMinorAxis(m)</b>	6356752.31	<b>Used Reference Type</b>	REFINSREF
<b>Datum</b>	WGS_84	<b>Unit</b>	pixels	<b>Standardparallel1(deg)</b>	17.0		
<b>Zone</b>	Not Applicable			<b>Standardparallel2(deg)</b>	17.0		

\* -999.99 : Not Applicable/Not Available

## References

**JobId : 3RSND20JAN20190300L1BSA1**

(-999.99 - Not Available/Not Computed)

Ref.No	Source	File Name	Resolution ( m )	Projection
1	ETM	world_Band1.img	500.0	GGP

## Location Accuracy

### GCP Distribution Statistics

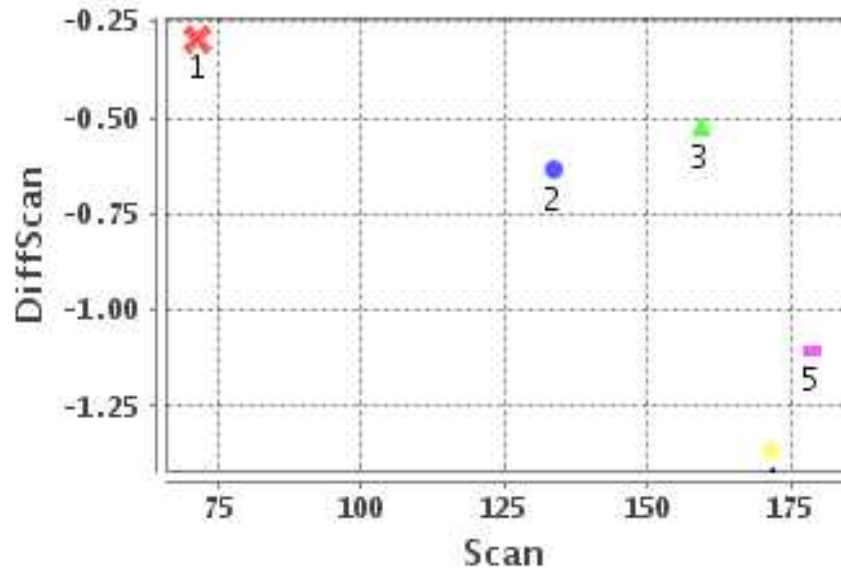
Image Width (pixels) : 384      Image Height (pixels) : 320      No of GCPs : 5

	Mean	StdDev	Min	Max	Coverage(in %)
<b>GCP Scan</b>	142.8	38.9	71.2	178.50	33.52 (N-S)
<b>GCP Pix</b>	150.8	129.4	12.2	308.00	77.02 (E-W)

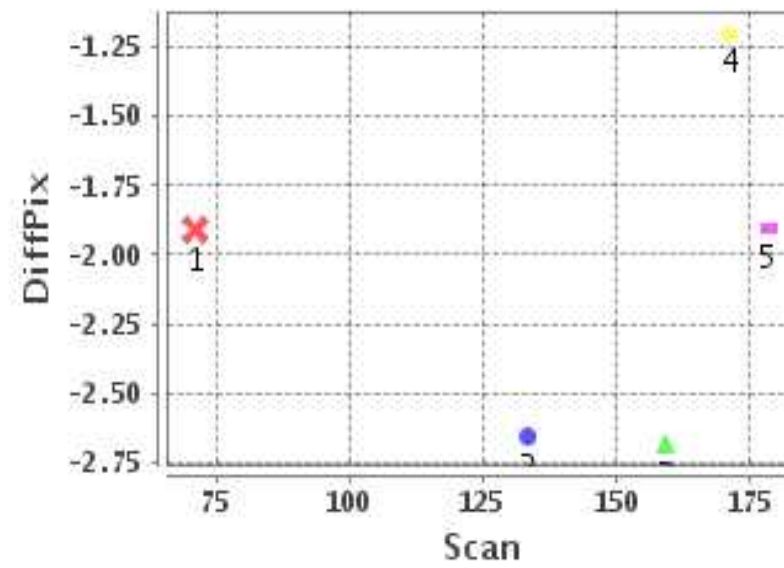
### Identified Control Point details : ( Differences are Reference - Product )

No	Scan	Pix	DiffScan (line)	DiffPix (pixel)	DifLat (Km)	Dir	DifLon (Km)	Dir	Status
1	159.2	31.2	-0.5	-2.68	3.836	N	28.954	W	Accepted
2	178.5	12.2	-1.1	-1.91	7.117	N	19.725	W	Accepted
3	133.5	100.5	-0.6	-2.66	1.933	N	23.282	W	Accepted
4	171.2	302.2	-1.4	-1.20	12.632	N	9.765	W	Accepted
5	71.2	308.0	-0.3	-1.91	0.596	S	25.351	W	Accepted

### Error(Pixels) Vs. GCPScan



### Error(Pixels) Vs. GCPScan



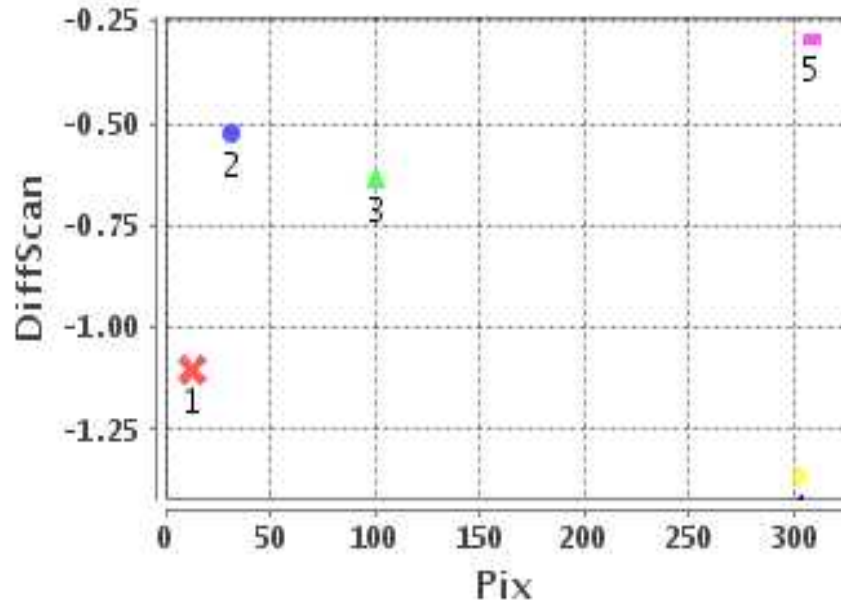
#### Number Of Points

North	4
South	1
East	0
West	5

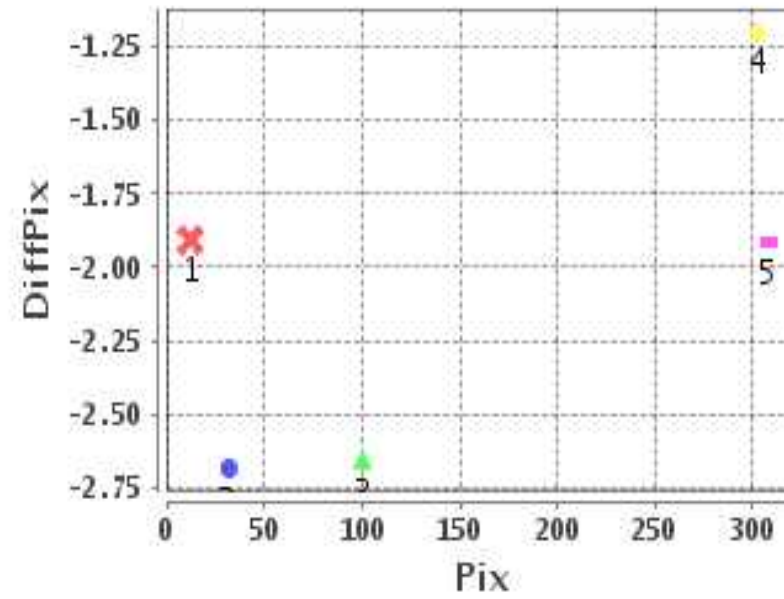
#### Radial Error ( Km )

Mean	2.297
Min	1.597
Max	2.921
CE90	2.536

### Error(Pixels) Vs. GCPPix



### Error(Pixels) Vs. GCPPix



#### Location Accuracy

	Mean	StdDev	RMS	Dir	* MinRMS	* MaxRMS
Along( Km )	0.498	0.458	0.677	N	0.417	0.756
Across ( Km )	-2.142	0.655	2.239	W	2.043	2.456

## Block-Wise Geo location Error Statistics

### Location Accuracy,Scale,ID

<b>Scan Range-0-105; Pix Range-0-127</b>		
Number of GCPs	-999	
<b>Location Error(Km)</b>		
Along(Mean,Dir)	-999.99	NotAvail
Across(Mean,Dir)	-999.99	NotAvail
<b>Scale(Km)</b>		
Average Scale (Mean,%Variation)	-999.99	-999.9
<b>Internal Distortion(Pixel)</b>		
Along(Mean,Stddev)	-999.99	-999.99
Across(Mean,Stddev)	-999.99	-999.99

<b>Scan Range-0-105; Pix Range-127-255</b>		
Number of GCPs	-999	
<b>Location Error(Km)</b>		
Along(Mean,Dir)	-999.99	NotAvail
Across(Mean,Dir)	-999.99	NotAvail
<b>Scale(Km)</b>		
Average Scale (Mean,%Variation)	-999.99	-999.9
<b>Internal Distortion(Pixel)</b>		
Along(Mean,Stddev)	-999.99	-999.99
Across(Mean,Stddev)	-999.99	-999.99

<b>Scan Range-0-105; Pix Range-255-384</b>		
Number of GCPs	1	
<b>Location Error(Km)</b>		
Along(Mean,Dir)	-0.6	S
Across(Mean,Dir)	-25.35	W
<b>Scale(Km)</b>		
Average Scale (Mean,%Variation)	-999.99	-999.9
<b>Internal Distortion(Pixel)</b>		
Along(Mean,Stddev)	-999.99	-999.99
Across(Mean,Stddev)	-999.99	-999.99

<b>Scan Range-105-212; Pix Range-0-127</b>		
Number of GCPs	3	
<b>Location Error(Km)</b>		
Along(Mean,Dir)	4.29667	N
Across(Mean,Dir)	-23.99	W
<b>Scale(Km)</b>		
Average Scale (Mean,%Variation)	10.41	4.08
<b>Internal Distortion(Pixel)</b>		
Along(Mean,Stddev)	0.18	0.29
Across(Mean,Stddev)	0.77	0.01

<b>Scan Range-105-212; Pix Range-127-255</b>		
Number of GCPs	-999	
<b>Location Error(Km)</b>		
Along(Mean,Dir)	-999.99	NotAvail
Across(Mean,Dir)	-999.99	NotAvail
<b>Scale(Km)</b>		
Average Scale (Mean,%Variation)	-999.99	-999.9
<b>Internal Distortion(Pixel)</b>		
Along(Mean,Stddev)	-999.99	-999.99
Across(Mean,Stddev)	-999.99	-999.99

<b>Scan Range-105-212; Pix Range-255-384</b>		
Number of GCPs	1	
<b>Location Error(Km)</b>		
Along(Mean,Dir)	12.63	N
Across(Mean,Dir)	-9.77	W
<b>Scale(Km)</b>		
Average Scale (Mean,%Variation)	-999.99	-999.9
<b>Internal Distortion(Pixel)</b>		
Along(Mean,Stddev)	-999.99	-999.99
Across(Mean,Stddev)	-999.99	-999.99

<b>Scan Range-212-320; Pix Range-0-127</b>		
Number of GCPs	-999	
<b>Location Error(Km)</b>		
Along(Mean,Dir)	-999.99	NotAvail
Across(Mean,Dir)	-999.99	NotAvail
<b>Scale(Km)</b>		
Average Scale (Mean,%Variation)	-999.99	-999.9
<b>Internal Distortion(Pixel)</b>		
Along(Mean,Stddev)	-999.99	-999.99
Across(Mean,Stddev)	-999.99	-999.99

<b>Scan Range-212-320; Pix Range-105-255</b>		
Number of GCPs	-999	
<b>Location Error(Km)</b>		
Along(Mean,Dir)	-999.99	NotAvail
Across(Mean,Dir)	-999.99	NotAvail
<b>Scale(Km)</b>		
Average Scale (Mean,%Variation)	-999.99	-999.9
<b>Internal Distortion(Pixel)</b>		
Along(Mean,Stddev)	-999.99	-999.99
Across(Mean,Stddev)	-999.99	-999.99

<b>Scan Range-212-320; Pix Range-255-384</b>		
Number of GCPs	-999	
<b>Location Error(Km)</b>		
Along(Mean,Dir)	-999.99	NotAvail
Across(Mean,Dir)	-999.99	NotAvail
<b>Scale(Km)</b>		
Average Scale (Mean,%Variation)	-999.99	-999.9
<b>Internal Distortion(Pixel)</b>		
Along(Mean,Stddev)	-999.99	-999.99
Across(Mean,Stddev)	-999.99	-999.99

\*-999 : no gcp available

\* -999.99 : values are not computed