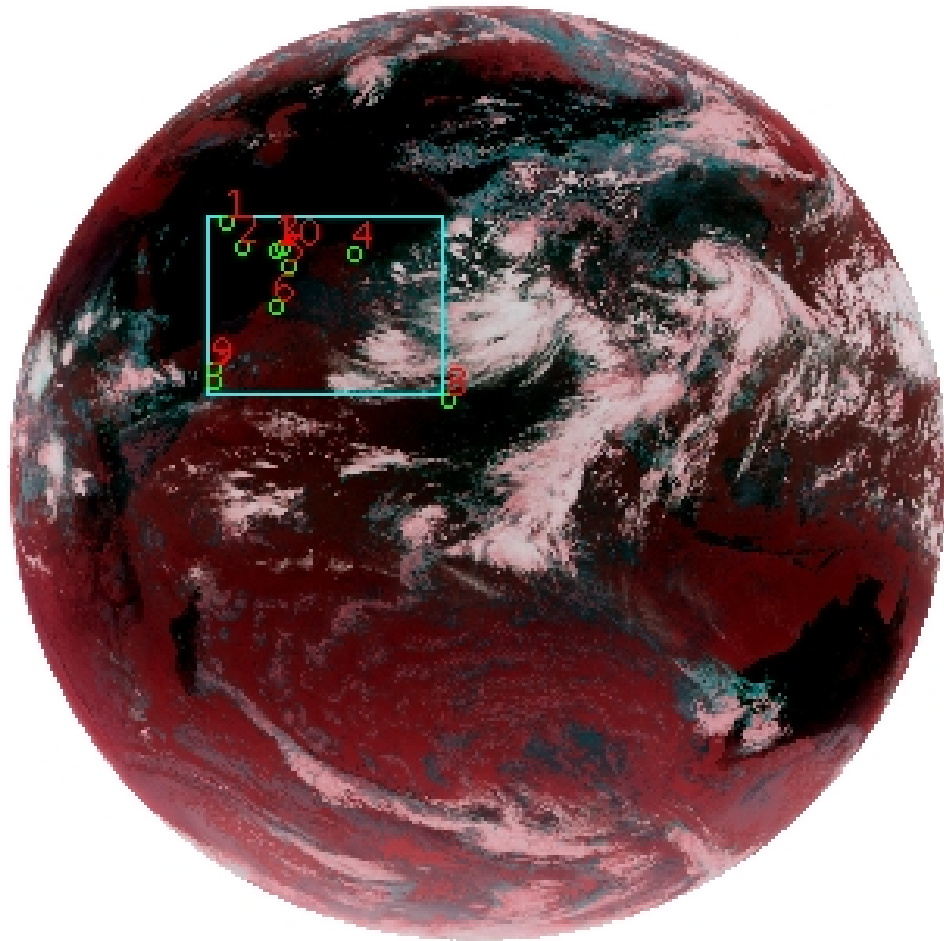


DQE Report: Location Accuracy of INSAT-3D-IMG STANDARD(FULL DISK) Product 3DIMG_27AUG2017_0600

Satellite INSAT-3D **No Of Bands** 6 **Product Type** STANDARD
Sensor IMG **LvlOfProcess** L1B **Selected Band** 2-TIR1
DOP/Time 27-08-17/06:00 **Station ID** BES **Field View(deg)** 17.974
Res(Y,X) [Km] (4.0,4.0) **Res(Y,X) [uRad]** (112.0,112.0)

(81.042N,0.843W)

(81.042N,163.157E)



(-81.042S,0.843W)

(-81.042S,163.157E)

GCP Distribution overview for 3DIMG27AUG20170600L1BSTD

Image Width: 2805 **Image Height:** 2816 **No Of GCPs:** 10

GCP Coverage(%) 18.01 **(N-S)** 23.98 **(E-W)**

Location Error(E)

Legend — 0Km < E <= 50Km — 50Km < E <= 100Km — E >100Km

Location Error (In IR Pixels)

| | Mean | Direction | Stddev | RMS |
|--------|--------|-----------|--------|-------|
| Along | -0.359 | S | 1.103 | 1.161 |
| Across | -1.875 | W | 1.337 | 2.303 |

Scale (Km)

| | Pixel Size | Stddev | %variation |
|---------|------------|--------|------------|
| Average | 4.815 | 0.658 | 20.369 |
| Along | 4.938 | 0.989 | 23.454 |
| Across | 4.917 | 0.518 | 22.917 |

Internal Distortion (in IR Pixels)

| | PeakToPeak | Mean | Stddev | RMS |
|--------|------------|-------|--------|-------|
| Along | 3.224 | 1.128 | 1.01 | 1.516 |
| Across | 3.362 | 0.732 | 1.22 | 1.426 |

Attitude Residuals (Deg)

| Pitch | Roll | Yaw |
|----------|----------|---------|
| -0.01901 | -0.00205 | 0.05995 |

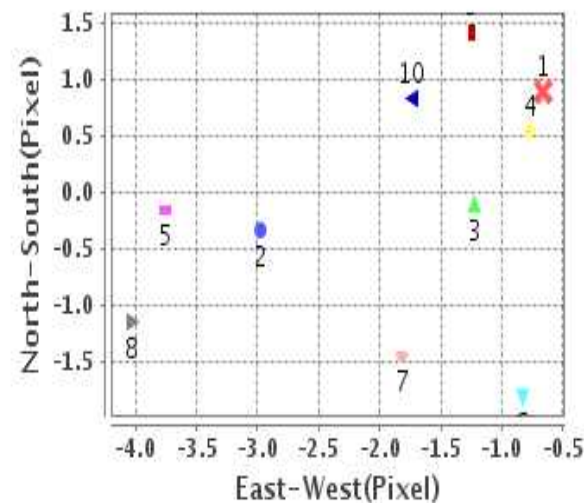
Reference Used

| Sensor | Resolution | Projection |
|--------|------------|------------|
| ETM | 500.00 | GGP |

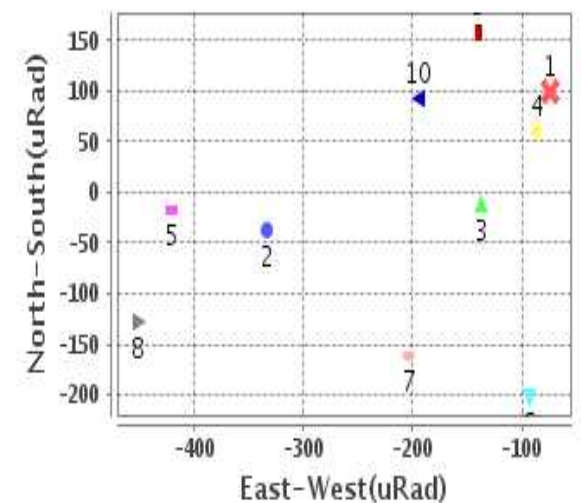
Radial Error (in IR Pixels)

| | |
|-------------|-------|
| Mean | 2.364 |
| Min | .911 |
| Max | 4.550 |
| CE90 | 3.499 |

Location Error For GCPs(Pixel)



Location Error For GCPs(uRad)



Detailed Product Information

Ancillary Info

| | | | |
|--------------------------|----------------|----------------------------------|------------|
| Satellite | INSAT-3D | Generation Date | 27-08-17 |
| Sensor | IMG | DQE Date | 28-08-2017 |
| PassType | NONE | Aquisition Date | 27-08-17 |
| Imaging Mode | FULL_FRAME | Aquisition Time(GMT) | 06:00 |
| Sat Altitude(m) | 3.6E7 | Nominal Altitude(Km) | 3.6E7 |
| Station | BES | Predicted Altitude(Km) | -999.99 |
| Sat Location(deg) | -999.99 E | Nominal Center Lat(deg) | 0.0 |
| Format | hdf5-1.8.8 | Nominal Center Lon(deg) | 82.0 |
| LvlOfProcessing | STANDARD(FULL) | Predicted Center Lat(deg) | -999.99 |
| DP JobId | 3DIMG_27AUG2 | Predicted Center Lon(deg) | -999.99 |
| ProductCode | NONE | | |
| Field View(deg) | 17.974 | | |

Projection Parameters

| | |
|--------------------------------------|----------|
| Projection | None |
| Ellipsoid | WGS_84 |
| Datum | WGS_84 |
| Zone | NotAvail |
| Semi_Major_Axis(Km) | 6378.14 |
| Semi_Minor_Axis(Km) | 6356.75 |
| Standard_Parallel1(deg) | -999.99 |
| Standard_Parallel2(deg) | -999.99 |
| Projection_Origin_Lon(deg) | -999.99 |
| Projection_Origin_Lat(deg) | -999.99 |
| Projection_False_Easting(Km) | -999.99 |
| Projection_False_Northing(Km) | -999.99 |

Scene Center Desc

| | |
|--------------------------|---------|
| Centre Lat(deg) | 0.0 |
| Center Lon(deg) | 82.0 |
| Centre Roll(deg) | -999.0 |
| Centre Pitch(deg) | -999.0 |
| Center Yaw(deg) | -999.0 |
| SunElevation(deg) | -999.99 |
| SunAzimuth(deg) | -999.99 |
| SatElevation(deg) | -999.99 |
| SatAzimuth(deg) | -999.99 |

Scene Corner Desc

| | |
|--------------------|---------|
| NW_Lat(deg) | 81.042 |
| NW_Lon(deg) | 0.843 |
| SW_Lat(deg) | -81.042 |
| SW_Lon(deg) | 0.843 |
| NE_Lat(deg) | 81.042 |
| NE_Lon(deg) | 163.157 |
| SE_Lat(deg) | -81.042 |
| SE_Lon(deg) | 163.157 |

Band Wise Details

| | Res_AL(Km) | Res_AX(Km) | Image Height | Image Width |
|-------------|------------|------------|--------------|-------------|
| MIR | 4.0 | 4.0 | 2816 | 2805 |
| SWIR | 1.0 | 1.0 | 11264 | 11220 |
| TIR1 | 4.0 | 4.0 | 2816 | 2805 |
| TIR2 | 4.0 | 4.0 | 2816 | 2805 |
| VIS | 1.0 | 1.0 | 11264 | 11220 |
| WV | 8.0 | 8.0 | 1408 | 1402 |

GDQE Computation Base

| | | | | | | | |
|-------------------|----------------|--------------------------------------|--------|-------------------------------|------------|----------------------------|-----------|
| Projection | MER | Wildpoint Rejection Threshold | 2.60 | SemiMajorAxis(m) | 6378137.00 | Mode Of Computation | grid |
| Ellipsoid | WGS_84 | | -sigma | SemiMinorAxis(m) | 6356752.31 | Used Reference Type | REFINSREF |
| Datum | WGS_84 | Unit | pixels | Standardparallel1(deg) | 17.0 | | |
| Zone | Not Applicable | | | Standardparallel2(deg) | 17.0 | | |

* -999.99 : Not Applicable/Not Available

References

JobId : 3DIMG27AUG20170600L1BSTD

(-999.99 - Not Available/Not Computed)

| Ref.No | Source | File Name | Resolution (m) | Projection |
|--------|--------|-----------------|------------------|------------|
| 1 | ETM | world_Band1.img | 500.0 | GGP |

Location Accuracy

GCP Distribution Statistics

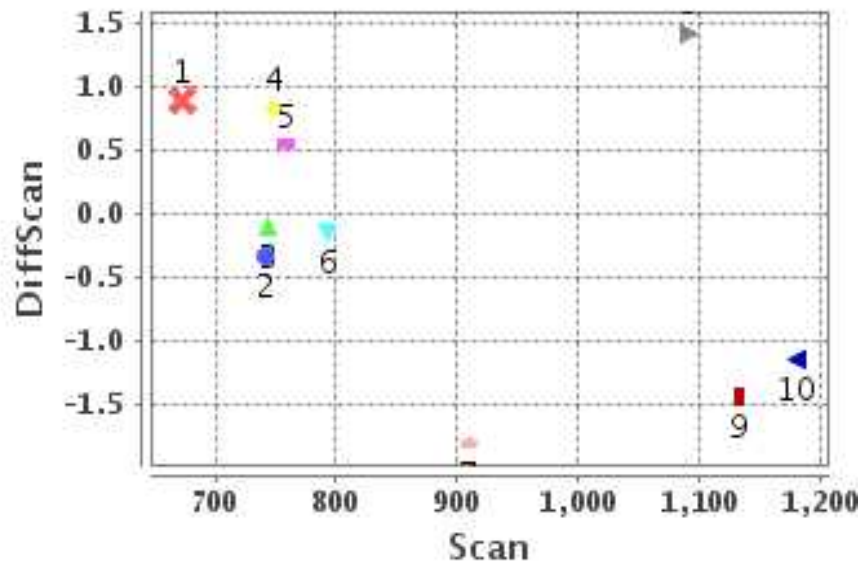
Image Width (pixels) : 2805 Image Height (pixels) : 2816 No of GCPs : 10

| | Mean | StdDev | Min | Max | Coverage(in %) |
|-----------------|-------|--------|-------|---------|----------------|
| GCP Scan | 877.2 | 178.7 | 672.5 | 1179.75 | 18.01 (N-S) |
| GCP Pix | 821.2 | 195.9 | 624.0 | 1296.50 | 23.98 (E-W) |

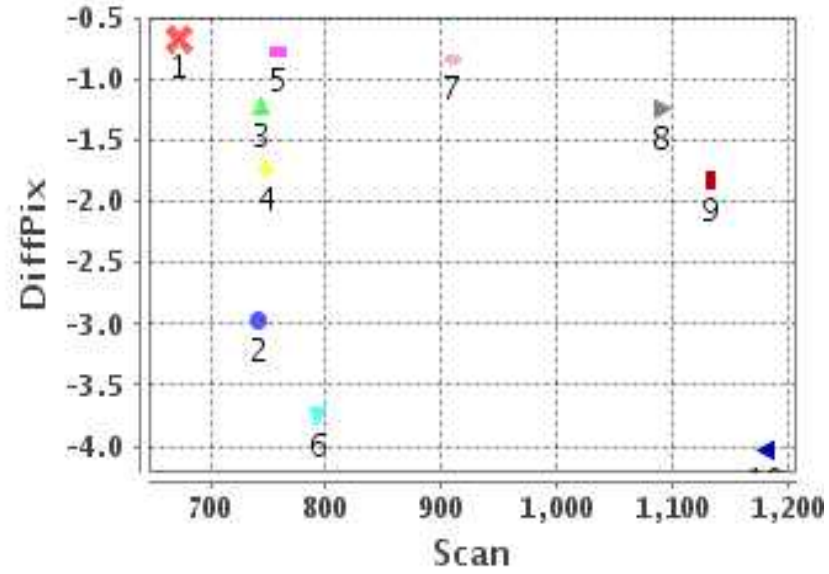
Identified Control Point details : (Differences are Reference - Product)

| No | Scan | Pix | DiffScan (line) | DiffPix (pixel) | DifLat (Km) | Dir | DifLon (Km) | Dir | Status |
|----|--------|--------|-----------------|-----------------|-------------|-----|-------------|-----|----------|
| 1 | 672.5 | 665.0 | 0.9 | -0.67 | 7.180 | S | 0.949 | W | Accepted |
| 2 | 741.5 | 703.8 | -0.3 | -2.97 | 0.300 | S | 11.684 | W | Accepted |
| 3 | 744.2 | 823.5 | -0.1 | -1.23 | 1.134 | S | 3.463 | W | Accepted |
| 4 | 759.2 | 1027.5 | 0.5 | -0.77 | 4.145 | S | 1.142 | W | Accepted |
| 5 | 793.5 | 840.0 | -0.1 | -3.75 | 1.511 | S | 18.136 | W | Accepted |
| 6 | 909.2 | 801.0 | -1.8 | -0.83 | 6.953 | N | 4.585 | W | Accepted |
| 7 | 1133.5 | 628.2 | -1.4 | -1.82 | 4.219 | N | 8.536 | W | Accepted |
| 8 | 1179.8 | 1296.5 | -1.1 | -4.03 | 0.932 | N | 13.963 | W | Accepted |
| 9 | 1090.2 | 624.0 | 1.4 | -1.25 | 6.970 | S | 5.509 | W | Accepted |
| 10 | 748.2 | 802.0 | 0.8 | -1.74 | 5.244 | S | 7.030 | W | Accepted |

Error(Pixels) Vs. GCPScan



Error(Pixels) Vs. GCPScan



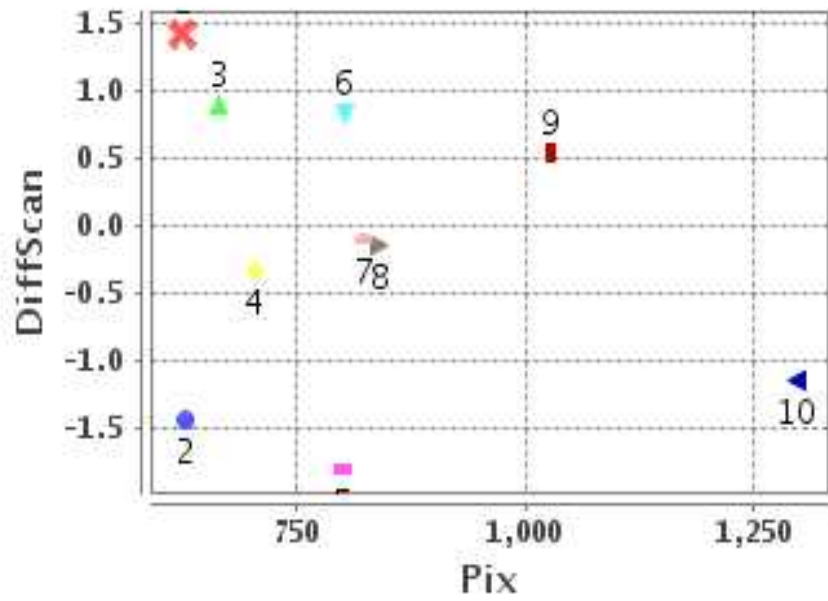
Number Of Points

| | |
|-------|----|
| North | 3 |
| South | 7 |
| East | 0 |
| West | 10 |

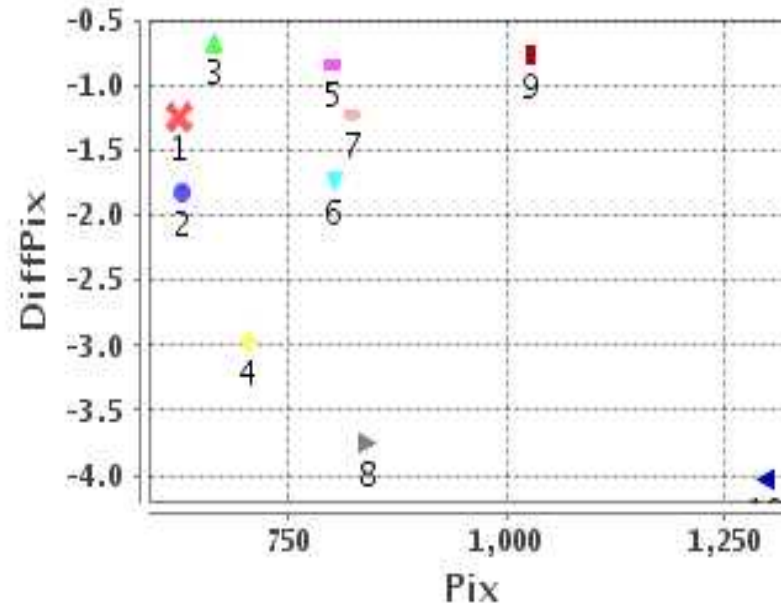
Radial Error (Km)

| | |
|------|-------|
| Mean | 2.364 |
| Min | .911 |
| Max | 4.550 |
| CE90 | 3.499 |

Error(Pixels) Vs. GCPPix



Error(Pixels) Vs. GCPPix



Location Accuracy

| | Mean | StdDev | RMS | Dir | * MinRMS | * MaxRMS |
|---------------|--------|--------|-------|-----|----------|----------|
| Along(Km) | -0.359 | 1.103 | 1.161 | S | 1.067 | 1.223 |
| Across (Km) | -1.875 | 1.337 | 2.303 | W | 1.899 | 2.426 |

Block-Wise Geo location Error Statistics

Location Accuracy,Scale,ID

| | | |
|--|----------|-------|
| Scan Range-0-937; Pix Range-0-934 | | |
| Number of GCPs | 6 | |
| Location Error(Km) | | |
| Along(Mean,Dir) | -1.40167 | S |
| Across(Mean,Dir) | -7.64 | W |
| Scale(Km) | | |
| Average Scale (Mean,%Variation) | 5.51 | 37.77 |
| Internal Distortion(Pixel) | | |
| Along(Mean,Stddev) | 1.20 | 0.85 |
| Across(Mean,Stddev) | 1.44 | 1.09 |

| | | |
|---|---------|---------|
| Scan Range-0-937; Pix Range-934-1869 | | |
| Number of GCPs | 1 | |
| Location Error(Km) | | |
| Along(Mean,Dir) | -4.15 | S |
| Across(Mean,Dir) | -1.14 | W |
| Scale(Km) | | |
| Average Scale (Mean,%Variation) | -999.99 | -999.9 |
| Internal Distortion(Pixel) | | |
| Along(Mean,Stddev) | -999.99 | -999.99 |
| Across(Mean,Stddev) | -999.99 | -999.99 |

| | | |
|--|---------|----------|
| Scan Range-0-937; Pix Range-1869-2805 | | |
| Number of GCPs | -999 | |
| Location Error(Km) | | |
| Along(Mean,Dir) | -999.99 | NotAvail |
| Across(Mean,Dir) | -999.99 | NotAvail |
| Scale(Km) | | |
| Average Scale (Mean,%Variation) | -999.99 | -999.9 |
| Internal Distortion(Pixel) | | |
| Along(Mean,Stddev) | -999.99 | -999.99 |
| Across(Mean,Stddev) | -999.99 | -999.99 |

| | | |
|---|--------|------|
| Scan Range-937-1876; Pix Range-0-934 | | |
| Number of GCPs | 2 | |
| Location Error(Km) | | |
| Along(Mean,Dir) | -1.375 | S |
| Across(Mean,Dir) | -7.02 | W |
| Scale(Km) | | |
| Average Scale (Mean,%Variation) | 3.98 | 0.52 |
| Internal Distortion(Pixel) | | |
| Along(Mean,Stddev) | 2.86 | 0.00 |
| Across(Mean,Stddev) | 0.57 | 0.00 |

| | | |
|--|---------|---------|
| Scan Range-937-1876; Pix Range-934-1869 | | |
| Number of GCPs | 1 | |
| Location Error(Km) | | |
| Along(Mean,Dir) | 0.933 | N |
| Across(Mean,Dir) | -13.96 | W |
| Scale(Km) | | |
| Average Scale (Mean,%Variation) | -999.99 | -999.9 |
| Internal Distortion(Pixel) | | |
| Along(Mean,Stddev) | -999.99 | -999.99 |
| Across(Mean,Stddev) | -999.99 | -999.99 |

| | | |
|---|---------|----------|
| Scan Range-937-1876; Pix Range-1869-2805 | | |
| Number of GCPs | -999 | |
| Location Error(Km) | | |
| Along(Mean,Dir) | -999.99 | NotAvail |
| Across(Mean,Dir) | -999.99 | NotAvail |
| Scale(Km) | | |
| Average Scale (Mean,%Variation) | -999.99 | -999.9 |
| Internal Distortion(Pixel) | | |
| Along(Mean,Stddev) | -999.99 | -999.99 |
| Across(Mean,Stddev) | -999.99 | -999.99 |

| | | |
|--|---------|----------|
| Scan Range-1876-2816; Pix Range-0-934 | | |
| Number of GCPs | -999 | |
| Location Error(Km) | | |
| Along(Mean,Dir) | -999.99 | NotAvail |
| Across(Mean,Dir) | -999.99 | NotAvail |
| Scale(Km) | | |
| Average Scale (Mean,%Variation) | -999.99 | -999.9 |
| Internal Distortion(Pixel) | | |
| Along(Mean,Stddev) | -999.99 | -999.99 |
| Across(Mean,Stddev) | -999.99 | -999.99 |

| | | |
|---|---------|----------|
| Scan Range-1876-2816; Pix Range-937-1869 | | |
| Number of GCPs | -999 | |
| Location Error(Km) | | |
| Along(Mean,Dir) | -999.99 | NotAvail |
| Across(Mean,Dir) | -999.99 | NotAvail |
| Scale(Km) | | |
| Average Scale (Mean,%Variation) | -999.99 | -999.9 |
| Internal Distortion(Pixel) | | |
| Along(Mean,Stddev) | -999.99 | -999.99 |
| Across(Mean,Stddev) | -999.99 | -999.99 |

| | | |
|--|---------|----------|
| Scan Range-1876-2816; Pix Range-1869-2805 | | |
| Number of GCPs | -999 | |
| Location Error(Km) | | |
| Along(Mean,Dir) | -999.99 | NotAvail |
| Across(Mean,Dir) | -999.99 | NotAvail |
| Scale(Km) | | |
| Average Scale (Mean,%Variation) | -999.99 | -999.9 |
| Internal Distortion(Pixel) | | |
| Along(Mean,Stddev) | -999.99 | -999.99 |
| Across(Mean,Stddev) | -999.99 | -999.99 |

*-999 : no gcp available

* -999.99 : values are not computed