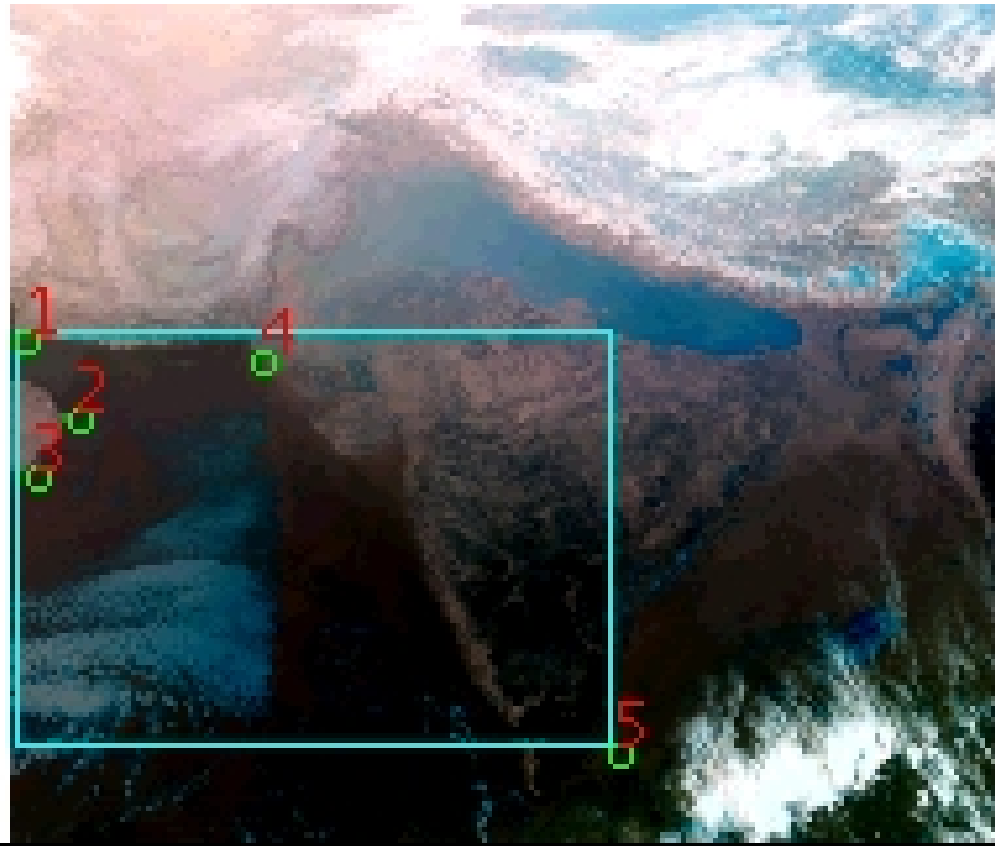


DQE Report: Location Accuracy of INSAT-3DR-SND STANDARD Product 3RSND_26JAN2018_0300

Satellite INSAT-3DR **No Of Bands** 19 **Product Type** STANDARD
Sensor SND **LvlOfProcess** L1B **Selected Band** 2-LWIR3
DOP/Time 26-01-18/03:00 **Station ID** BES **Field View(deg)** 6.136
Res(Y,X) [Km] (10.0,10.0) **Res(Y,X) [uRad]** (280.0,280.0)

(41.274N,52.047W)

(41.274N,102.068E)



(6.84S,52.047W)

(6.84S,102.068E)

GCP Distribution overview for 3RSND26JAN20180300L1BSA1

Image Width: 384 **Image Height:** 320 **No Of GCPs:** 5

GCP Coverage(%) 49.14 **(N-S)** 58.59 **(E-W)**

Location Error(E)

Legend — 0Km < E <= 50Km — 50Km < E <= 100Km — E >100Km

Location Error (In IR Pixels)

| | Mean | Direction | Stddev | RMS |
|--------|--------|-----------|--------|-------|
| Along | -0.613 | S | 0.395 | 0.729 |
| Across | -1.400 | W | 0.459 | 1.474 |

Scale (Km)

| | Pixel Size | Stddev | %variation |
|---------|------------|--------|------------|
| Average | 11.019 | 0.860 | 10.187 |
| Along | 12.089 | 0.029 | 20.887 |
| Across | 11.296 | 0.318 | 12.955 |

Internal Distortion (in IR Pixels)

| | PeakToPeak | Mean | Stddev | RMS |
|--------|------------|--------|--------|-------|
| Along | 1.530 | -0.187 | 0.56 | 0.590 |
| Across | 1.563 | 0.293 | 0.61 | 0.674 |

Attitude Residuals (Deg)

| Pitch | Roll | Yaw |
|----------|---------|---------|
| -0.02112 | 0.00329 | 0.17233 |

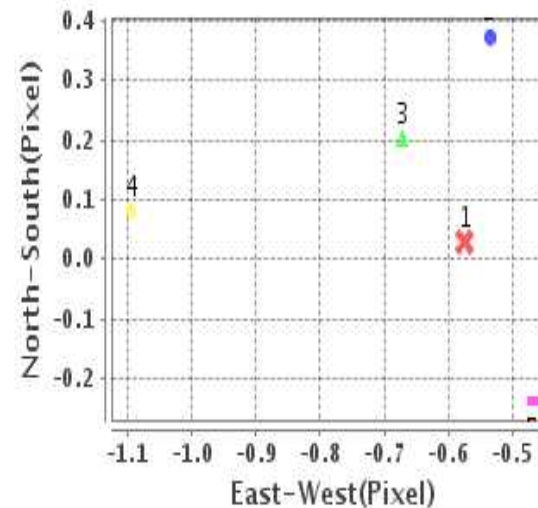
Reference Used

| Sensor | Resolution | Projection |
|--------|------------|------------|
| ETM | 500.00 | GGP |

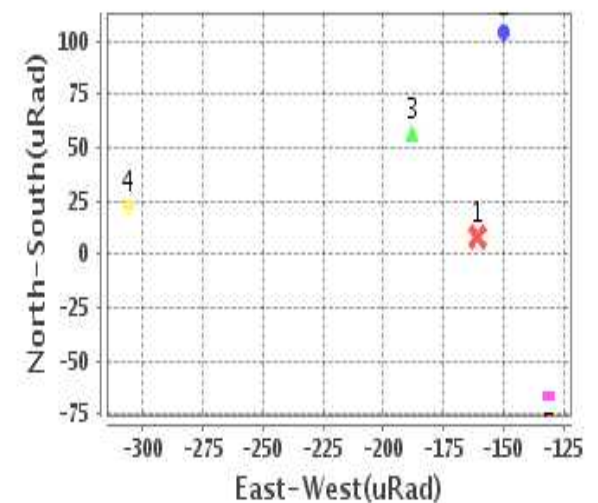
Radial Error (in IR Pixels)

| | |
|-------------|-------|
| Mean | 1.568 |
| Min | .963 |
| Max | 2.423 |
| CE90 | 1.749 |

Location Error For GCPs(Pixel)



Location Error For GCPs(uRad)



Detailed Product Information

Ancillary Info

| | | | |
|--------------------------|---------------|----------------------------------|------------|
| Satellite | INSAT-3DR | Generation Date | 26-01-18 |
| Sensor | SND | DQE Date | 04-05-2018 |
| PassType | NONE | Aquisition Date | 26-01-18 |
| Imaging Mode | FULL_FRAME | Aquisition Time(GMT) | 03:00 |
| Sat Altitude(m) | 3.6E7 | Nominal Altitude(Km) | 3.6E7 |
| Station | BES | Predicted Altitude(Km) | -999.99 |
| Sat Location(deg) | -999.99 E | Nominal Center Lat(deg) | 0.0 |
| Format | hdf5-1.8.8 | Nominal Center Lon(deg) | 74.0 |
| LvlOfProcessing | STANDARD | Predicted Center Lat(deg) | -999.99 |
| DP JobId | 3RSND_26JAN20 | Predicted Center Lon(deg) | -999.99 |
| ProductCode | NONE | | |
| Field View(deg) | 6.136 | | |

Projection Parameters

| | |
|--------------------------------------|----------|
| Projection | None |
| Ellipsoid | WGS_84 |
| Datum | WGS_84 |
| Zone | NotAvail |
| Semi_Major_Axis(Km) | 6378.14 |
| Semi_Minor_Axis(Km) | 6356.75 |
| Standard_Parallel1(deg) | -999.99 |
| Standard_Parallel2(deg) | -999.99 |
| Projection_Origin_Lon(deg) | -999.99 |
| Projection_Origin_Lat(deg) | -999.99 |
| Projection_False_Easting(Km) | -999.99 |
| Projection_False_Northing(Km) | -999.99 |

Scene Center Desc

| | |
|--------------------------|---------|
| Centre Lat(deg) | 24.057 |
| Center Lon(deg) | 77.057 |
| Centre Roll(deg) | -999.0 |
| Centre Pitch(deg) | -999.0 |
| Center Yaw(deg) | -999.0 |
| SunElevation(deg) | -999.99 |
| SunAzimuth(deg) | -999.99 |
| SatElevation(deg) | -999.99 |
| SatAzimuth(deg) | -999.99 |

Scene Corner Desc

| | |
|--------------------|---------|
| NW_Lat(deg) | 41.274 |
| NW_Lon(deg) | 52.047 |
| SW_Lat(deg) | 6.84 |
| SW_Lon(deg) | 52.047 |
| NE_Lat(deg) | 41.274 |
| NE_Lon(deg) | 102.068 |
| SE_Lat(deg) | 6.84 |
| SE_Lon(deg) | 102.068 |

Band Wise Details

| | Res_AL(Km) | Res_AX(Km) | Image Height | Image Width |
|--------------|------------|------------|--------------|-------------|
| LWIR1 | 10.0 | 10.0 | 320 | 384 |
| LWIR2 | 10.0 | 10.0 | 320 | 384 |
| LWIR3 | 10.0 | 10.0 | 320 | 384 |
| LWIR4 | 10.0 | 10.0 | 320 | 384 |
| LWIR5 | 10.0 | 10.0 | 320 | 384 |
| LWIR6 | 10.0 | 10.0 | 320 | 384 |

GDQE Computation Base

| | | | | | | | |
|-------------------|----------------|--------------------------------------|--------|-------------------------------|------------|----------------------------|-----------|
| Projection | MER | Wildpoint Rejection Threshold | 2.60 | SemiMajorAxis(m) | 6378137.00 | Mode Of Computation | grid |
| Ellipsoid | WGS_84 | | -sigma | SemiMinorAxis(m) | 6356752.31 | Used Reference Type | REFINSREF |
| Datum | WGS_84 | Unit | pixels | Standardparallel1(deg) | 17.0 | | |
| Zone | Not Applicable | | | Standardparallel2(deg) | 17.0 | | |

* -999.99 : Not Applicable/Not Available

References

JobId : 3RSND26JAN20180300L1BSA1

(-999.99 - Not Available/Not Computed)

| Ref.No | Source | File Name | Resolution (m) | Projection |
|--------|--------|-----------------|------------------|------------|
| 1 | ETM | world_Band1.img | 500.0 | GGP |

Location Accuracy

GCP Distribution Statistics

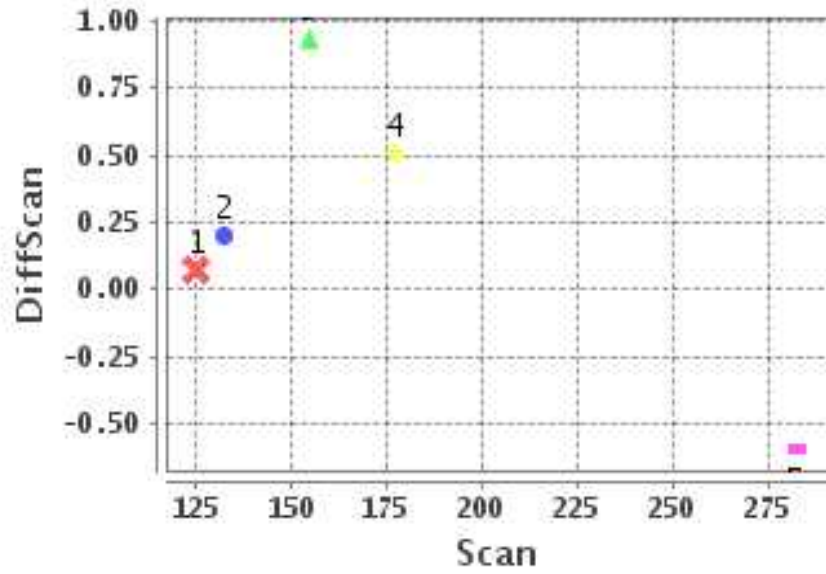
Image Width (pixels) : 384 Image Height (pixels) : 320 No of GCPs : 5

| | Mean | StdDev | Min | Max | Coverage(in %) |
|-----------------|-------|--------|-------|--------|----------------|
| GCP Scan | 174.5 | 57.0 | 125.2 | 282.50 | 49.14 (N-S) |
| GCP Pix | 78.5 | 85.3 | 11.2 | 236.25 | 58.59 (E-W) |

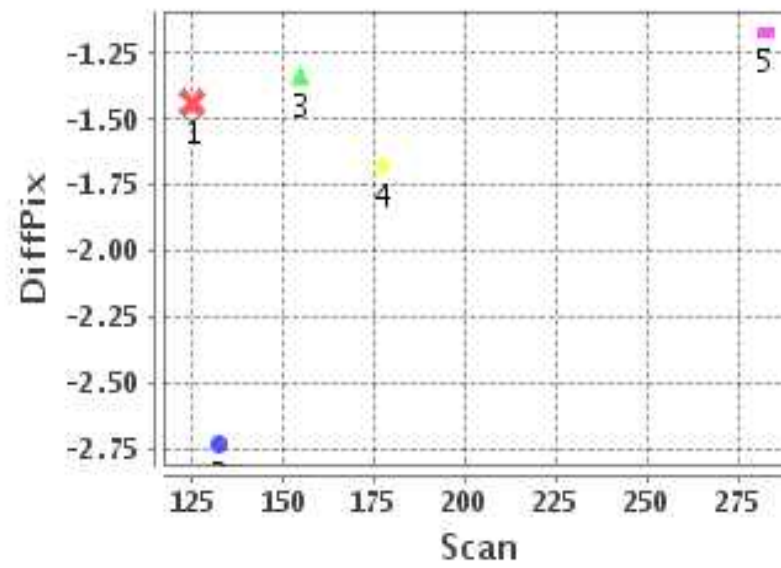
Identified Control Point details : (Differences are Reference - Product)

| No | Scan | Pix | DiffScan (line) | DiffPix (pixel) | DifLat (Km) | Dir | DifLon (Km) | Dir | Status |
|----|-------|-------|-----------------|-----------------|-------------|-----|-------------|-----|----------|
| 1 | 125.2 | 11.2 | 0.1 | -1.44 | 3.732 | S | 12.647 | W | Accepted |
| 2 | 155.0 | 30.0 | 0.9 | -1.34 | 10.296 | S | 14.134 | W | Accepted |
| 3 | 177.2 | 14.5 | 0.5 | -1.68 | 8.505 | S | 10.947 | W | Accepted |
| 4 | 132.5 | 100.5 | 0.2 | -2.73 | 8.572 | S | 22.661 | W | Accepted |
| 5 | 282.5 | 236.2 | -0.6 | -1.17 | 0.454 | N | 9.620 | W | Accepted |

Error(Pixels) Vs. GCPScan



Error(Pixels) Vs. GCPScan



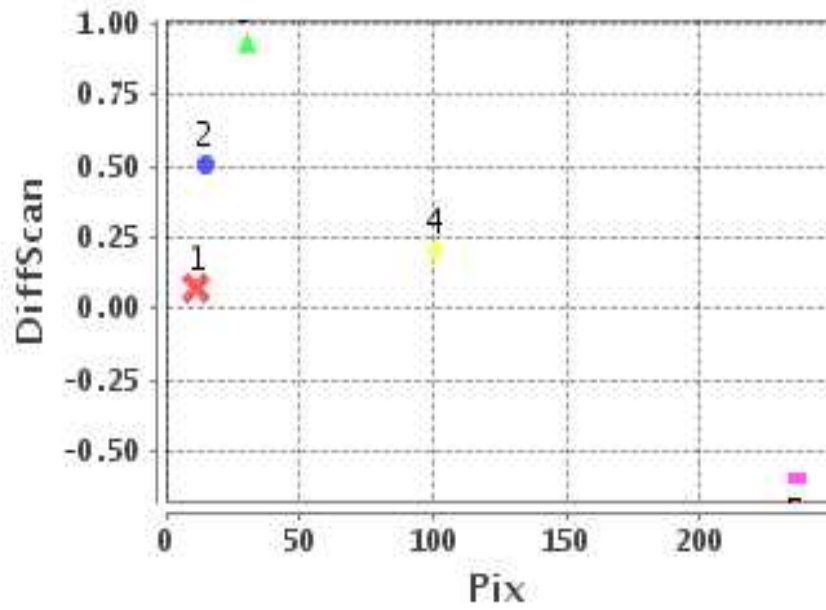
Number Of Points

| | |
|-------|---|
| North | 1 |
| South | 4 |
| East | 0 |
| West | 5 |

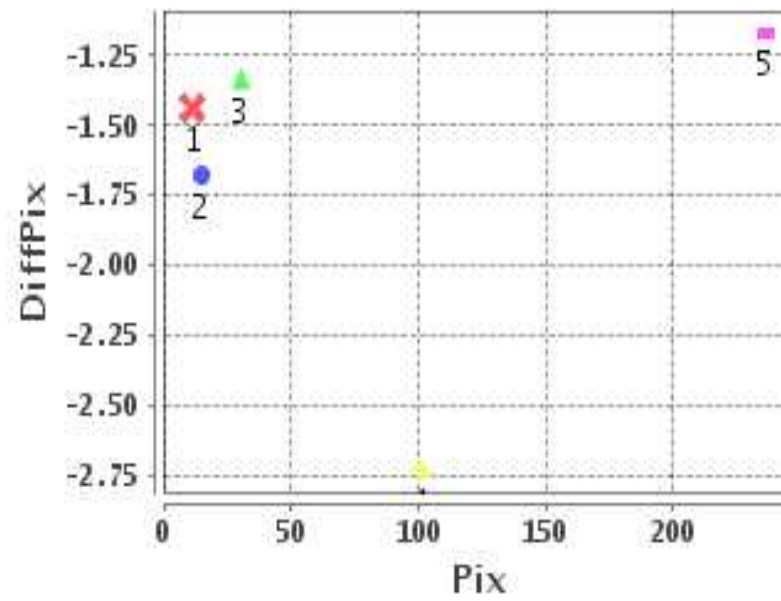
Radial Error (Km)

| | |
|------|-------|
| Mean | 1.568 |
| Min | .963 |
| Max | 2.423 |
| CE90 | 1.749 |

Error(Pixels) Vs. GCPPix



Error(Pixels) Vs. GCPPix



Location Accuracy

| | Mean | StdDev | RMS | Dir | * MinRMS | * MaxRMS |
|---------------|--------|--------|-------|-----|----------|----------|
| Along(Km) | -0.613 | 0.395 | 0.729 | S | 0.632 | 0.815 |
| Across (Km) | -1.400 | 0.459 | 1.474 | W | 1.196 | 1.576 |

Block-Wise Geo location Error Statistics

Location Accuracy,Scale,ID

| | | |
|--|---------|----------|
| Scan Range-0-105; Pix Range-0-127 | | |
| Number of GCPs | -999 | |
| Location Error(Km) | | |
| Along(Mean,Dir) | -999.99 | NotAvail |
| Across(Mean,Dir) | -999.99 | NotAvail |
| Scale(Km) | | |
| Average Scale (Mean,%Variation) | -999.99 | -999.9 |
| Internal Distortion(Pixel) | | |
| Along(Mean,Stddev) | -999.99 | -999.99 |
| Across(Mean,Stddev) | -999.99 | -999.99 |

| | | |
|--|---------|----------|
| Scan Range-0-105; Pix Range-127-255 | | |
| Number of GCPs | -999 | |
| Location Error(Km) | | |
| Along(Mean,Dir) | -999.99 | NotAvail |
| Across(Mean,Dir) | -999.99 | NotAvail |
| Scale(Km) | | |
| Average Scale (Mean,%Variation) | -999.99 | -999.9 |
| Internal Distortion(Pixel) | | |
| Along(Mean,Stddev) | -999.99 | -999.99 |
| Across(Mean,Stddev) | -999.99 | -999.99 |

| | | |
|--|---------|----------|
| Scan Range-0-105; Pix Range-255-384 | | |
| Number of GCPs | -999 | |
| Location Error(Km) | | |
| Along(Mean,Dir) | -999.99 | NotAvail |
| Across(Mean,Dir) | -999.99 | NotAvail |
| Scale(Km) | | |
| Average Scale (Mean,%Variation) | -999.99 | -999.9 |
| Internal Distortion(Pixel) | | |
| Along(Mean,Stddev) | -999.99 | -999.99 |
| Across(Mean,Stddev) | -999.99 | -999.99 |

| | | |
|--|---------|-------|
| Scan Range-105-212; Pix Range-0-127 | | |
| Number of GCPs | 4 | |
| Location Error(Km) | | |
| Along(Mean,Dir) | -7.7775 | S |
| Across(Mean,Dir) | -15.10 | W |
| Scale(Km) | | |
| Average Scale (Mean,%Variation) | 11.33 | 13.28 |
| Internal Distortion(Pixel) | | |
| Along(Mean,Stddev) | -0.47 | 0.30 |
| Across(Mean,Stddev) | 0.48 | 0.59 |

| | | |
|--|---------|----------|
| Scan Range-105-212; Pix Range-127-255 | | |
| Number of GCPs | -999 | |
| Location Error(Km) | | |
| Along(Mean,Dir) | -999.99 | NotAvail |
| Across(Mean,Dir) | -999.99 | NotAvail |
| Scale(Km) | | |
| Average Scale (Mean,%Variation) | -999.99 | -999.9 |
| Internal Distortion(Pixel) | | |
| Along(Mean,Stddev) | -999.99 | -999.99 |
| Across(Mean,Stddev) | -999.99 | -999.99 |

| | | |
|--|---------|----------|
| Scan Range-105-212; Pix Range-255-384 | | |
| Number of GCPs | -999 | |
| Location Error(Km) | | |
| Along(Mean,Dir) | -999.99 | NotAvail |
| Across(Mean,Dir) | -999.99 | NotAvail |
| Scale(Km) | | |
| Average Scale (Mean,%Variation) | -999.99 | -999.9 |
| Internal Distortion(Pixel) | | |
| Along(Mean,Stddev) | -999.99 | -999.99 |
| Across(Mean,Stddev) | -999.99 | -999.99 |

| | | |
|--|---------|----------|
| Scan Range-212-320; Pix Range-0-127 | | |
| Number of GCPs | -999 | |
| Location Error(Km) | | |
| Along(Mean,Dir) | -999.99 | NotAvail |
| Across(Mean,Dir) | -999.99 | NotAvail |
| Scale(Km) | | |
| Average Scale (Mean,%Variation) | -999.99 | -999.9 |
| Internal Distortion(Pixel) | | |
| Along(Mean,Stddev) | -999.99 | -999.99 |
| Across(Mean,Stddev) | -999.99 | -999.99 |

| | | |
|--|---------|---------|
| Scan Range-212-320; Pix Range-105-255 | | |
| Number of GCPs | 1 | |
| Location Error(Km) | | |
| Along(Mean,Dir) | 0.45 | N |
| Across(Mean,Dir) | -9.62 | W |
| Scale(Km) | | |
| Average Scale (Mean,%Variation) | -999.99 | -999.9 |
| Internal Distortion(Pixel) | | |
| Along(Mean,Stddev) | -999.99 | -999.99 |
| Across(Mean,Stddev) | -999.99 | -999.99 |

| | | |
|--|---------|----------|
| Scan Range-212-320; Pix Range-255-384 | | |
| Number of GCPs | -999 | |
| Location Error(Km) | | |
| Along(Mean,Dir) | -999.99 | NotAvail |
| Across(Mean,Dir) | -999.99 | NotAvail |
| Scale(Km) | | |
| Average Scale (Mean,%Variation) | -999.99 | -999.9 |
| Internal Distortion(Pixel) | | |
| Along(Mean,Stddev) | -999.99 | -999.99 |
| Across(Mean,Stddev) | -999.99 | -999.99 |

*-999 : no gcp available

* -999.99 : values are not computed