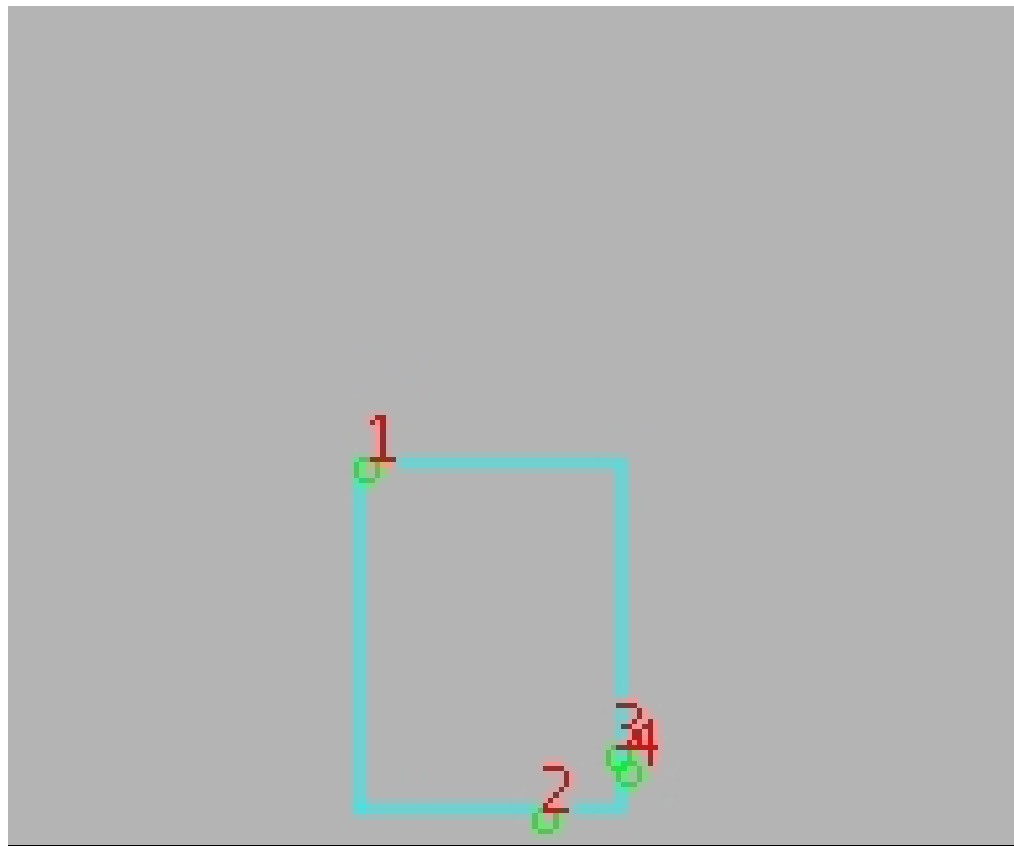


# DQE Report: GDQE - Location parameters for INSAT-3DR-SND STANDARD Product 3RSND\_13JAN2017\_0630

**Satellite** INSAT-3DR      **No Of Bands** 19      **Product Type** STANDARD  
**Sensor** SND              **LvlOfProcess** L1B      **Selected Band** 2-LWIR3  
**DOP/Time** 13-01-17/06:30      **Station ID** BES      **Field View(deg)** 6.136  
**Res(Y,X) [Km]** (10.0,10.0)      **Res(Y,X) [uRad]** (280.0,280.0)

(41.31N,53.092W)

(41.31N,103.118E)



(6.841S,53.092W)

(6.841S,103.118E)

GCP Distribution overview for 3RSND13JAN20170630L1BSA1

**Image Width:** 384      **Image Height:** 320      **No Of GCPs:** 4

**GCP Coverage(%)** 41.48      **(N-S)** 26.17      **(E-W)**

## Location Error(E)

**Legend**      — 0Km < E <= 50Km      — 50Km < E <= 100Km      — E >100Km

## Location Error (Km)

	Mean	Direction	Stddev	RMS
Along	9.733	N	4.137	10.576
Across	-10.488	W	11.245	15.377

## Scale (Km)

	Pixel Size	Stddev	%variation
Average	9.684	0.820	3.160
Along	-1.000	-1.000	-999.990
Across	-1.000	-1.000	-999.990

## Internal Distortion (in Pixels)

	PeakToPeak	Mean	Stddev	RMS
Along	0.651	0.199	0.27	0.336
Across	2.369	-1.383	0.97	1.690

## Attitude Residuals (Deg)

Pitch	Roll	Yaw
-0.01449	-0.01691	0.47133

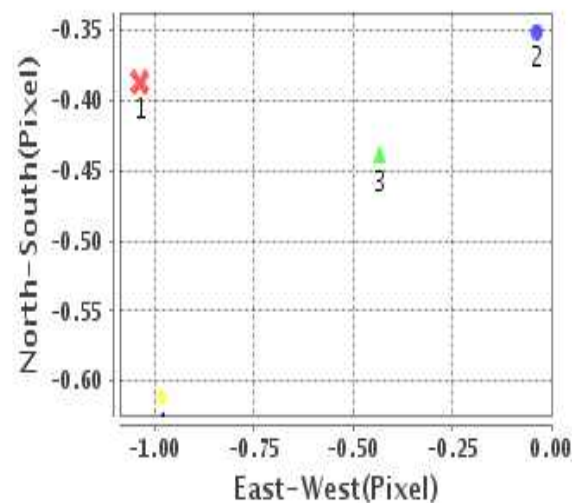
## Reference Used

Sensor	Resolution	Projection
ETM	500.00	GGP

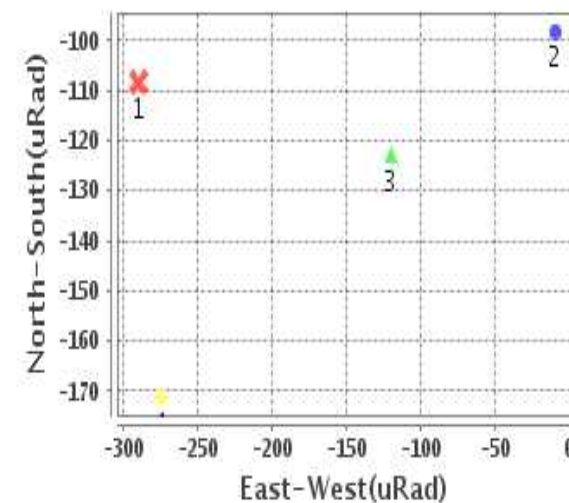
## Radial Error (Km)

Mean	17.521
Min	8.973
Max	24.603
CE90	22.780

## Location Error For GCPs(Pixel)



## Location Error For GCPs(uRad)



## Detailed Product Information

### Ancillary Info

<b>Satellite</b>	INSAT-3DR	<b>Generation Date</b>	13-01-17
<b>Sensor</b>	SND	<b>DQE Date</b>	18-01-2017
<b>PassType</b>	NONE	<b>Aquisition Date</b>	13-01-17
<b>Imaging Mode</b>	FULL_FRAME	<b>Aquisition Time(GMT)</b>	06:30
<b>Sat Altitude(m)</b>	3.6E7	<b>Nominal Altitude(Km)</b>	3.6E7
<b>Station</b>	BES	<b>Predicted Altitude(Km)</b>	-1000.0
<b>Sat Location(deg)</b>	0.0 E	<b>Nominal Center Lat(deg)</b>	0.0
<b>Format</b>	hdf5-1.8.8	<b>Nominal Center Lon(deg)</b>	74.0
<b>LvlOfProcessing</b>	STANDARD	<b>Predicted Center Lat(deg)</b>	0.0
<b>DP JobId</b>	3RSND_13JAN20	<b>Predicted Center Lon(deg)</b>	0.0
<b>ProductCode</b>	NONE		
<b>Field View(deg)</b>	6.136		

### Projection Parameters

<b>Projection</b>	None
<b>Ellipsoid</b>	WGS_84
<b>Datum</b>	WGS_84
<b>Zone</b>	NotAvail
<b>Semi_Major_Axis(Km)</b>	6378.14
<b>Semi_Minor_Axis(Km)</b>	6356.75
<b>Standard_Parallel1(deg)</b>	-999.99
<b>Standard_Parallel2(deg)</b>	-999.99
<b>Projection_Origin_Lon(deg)</b>	-999.99
<b>Projection_Origin_Lat(deg)</b>	-999.99
<b>Projection_False_Easting(Km)</b>	-999.99
<b>Projection_False_Northing(Km)</b>	-999.99

### Scene Center Desc

<b>Centre Lat(deg)</b>	24.075
<b>Center Lon(deg)</b>	78.105
<b>Centre Roll(deg)</b>	-999.0
<b>Centre Pitch(deg)</b>	-999.0
<b>Center Yaw(deg)</b>	-999.0
<b>SunElevation(deg)</b>	-999.99
<b>SunAzimuth(deg)</b>	-999.99
<b>SatElevation(deg)</b>	-999.99
<b>SatAzimuth(deg)</b>	-999.99

### Scene Corner Desc

<b>NW_Lat(deg)</b>	41.31
<b>NW_Lon(deg)</b>	53.092
<b>SW_Lat(deg)</b>	6.841
<b>SW_Lon(deg)</b>	53.092
<b>NE_Lat(deg)</b>	41.31
<b>NE_Lon(deg)</b>	103.118
<b>SE_Lat(deg)</b>	6.841
<b>SE_Lon(deg)</b>	103.118

### Band Wise Details

	Res_AL(Km)	Res_AX(Km)	Image Height	Image Width
<b>LWIR1</b>	10.0	10.0	320	384
<b>LWIR2</b>	10.0	10.0	320	384
<b>LWIR3</b>	10.0	10.0	320	384
<b>LWIR4</b>	10.0	10.0	320	384
<b>LWIR5</b>	10.0	10.0	320	384
<b>LWIR6</b>	10.0	10.0	320	384

## GDQE Computation Base

<b>Projection</b>	MER	<b>Wildpoint Rejection Threshold</b>	2.60	<b>SemiMajorAxis(m)</b>	6378137.00	<b>Mode Of Computation</b>	grid
<b>Ellipsoid</b>	WGS_84		-sigma	<b>SemiMinorAxis(m)</b>	6356752.31	<b>Used Reference Type</b>	REFINSREF
<b>Datum</b>	WGS_84	<b>Unit</b>	pixels	<b>Standardparallel1(deg)</b>	17.0		
<b>Zone</b>	Not Applicable			<b>Standardparallel2(deg)</b>	17.0		

\* -999.99 : Not Applicable/Not Available

## References

**JobId : 3RSND13JAN20170630L1BSA1**

(-999.99 - Not Available/Not Computed)

Ref.No	Source	File Name	Resolution ( m )	Projection
1	ETM	world_Band1.img	500.0	GGP

## Location Accuracy

### GCP Distribution Statistics

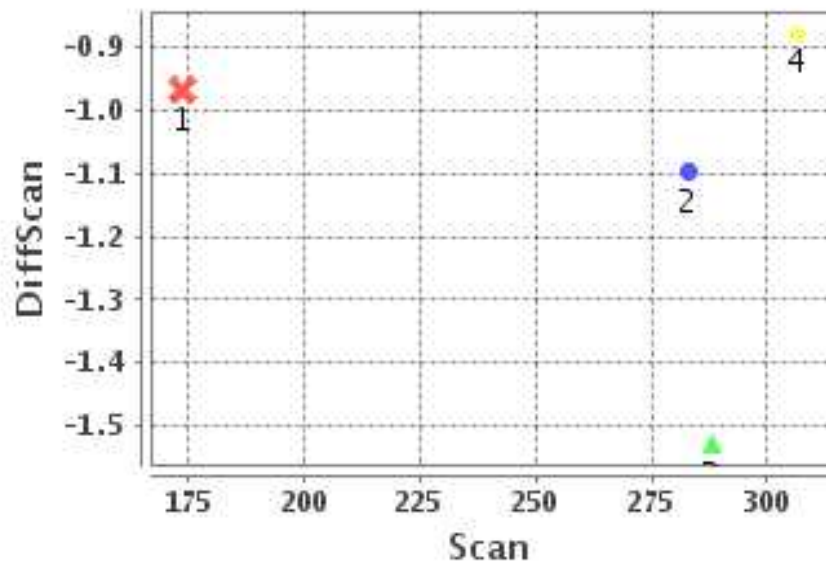
Image Width (pixels) : 384      Image Height (pixels) : 320      No of GCPs : 4

	Mean	StdDev	Min	Max	Coverage(in %)
<b>GCP Scan</b>	262.7	52.2	173.5	306.25	41.48 (N-S)
<b>GCP Pix</b>	199.2	40.0	133.2	233.75	26.17 (E-W)

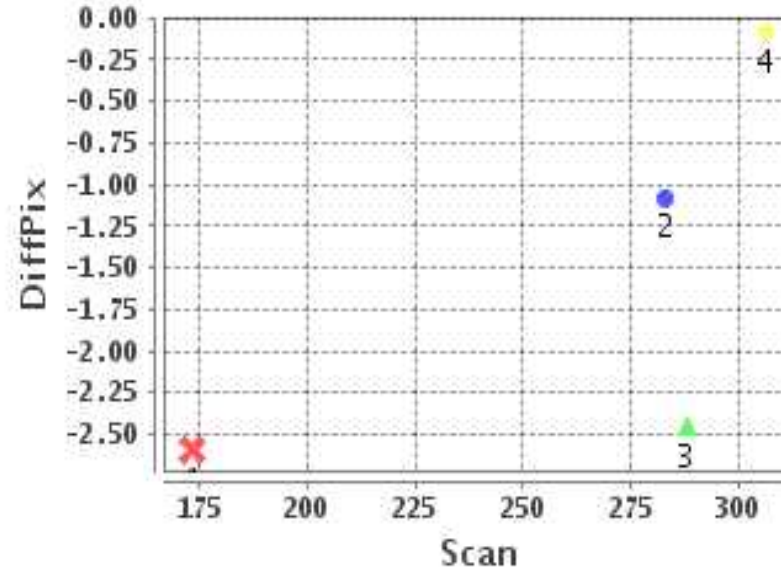
### Identified Control Point details : ( Differences are Reference - Product )

No	Scan	Pix	DiffScan (line)	DiffPix (pixel)	DifLat (Km)	Dir	DifLon (Km)	Dir	Status
1	173.5	133.2	-1.0	-2.59	5.530	N	23.973	W	Accepted
2	306.2	201.8	-0.9	-0.09	6.361	N	6.328	E	Accepted
3	283.0	228.2	-1.1	-1.08	11.203	N	7.934	W	Accepted
4	288.0	233.8	-1.5	-2.46	15.838	N	16.374	W	Accepted

### Error(Pixels) Vs. GCPScan



### Error(Pixels) Vs. GCPScan



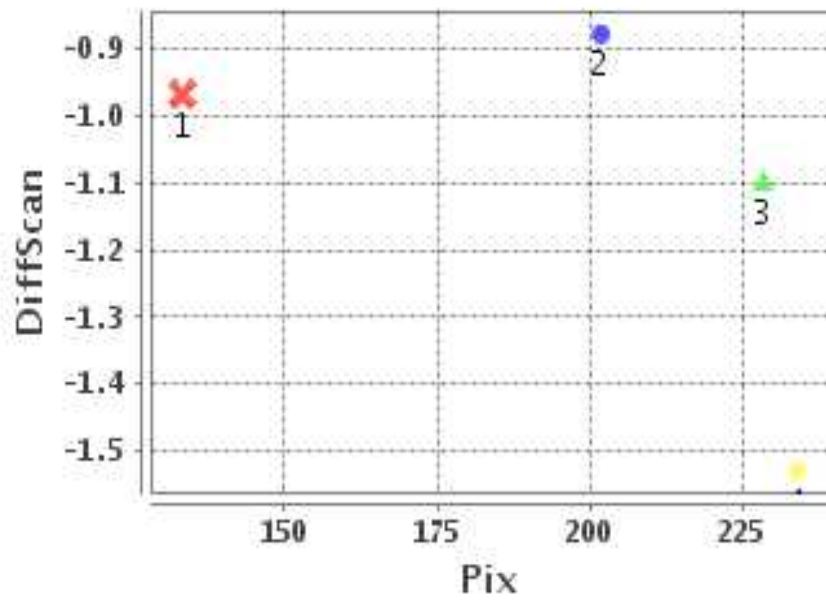
#### Number Of Points

North	4
South	0
East	1
West	3

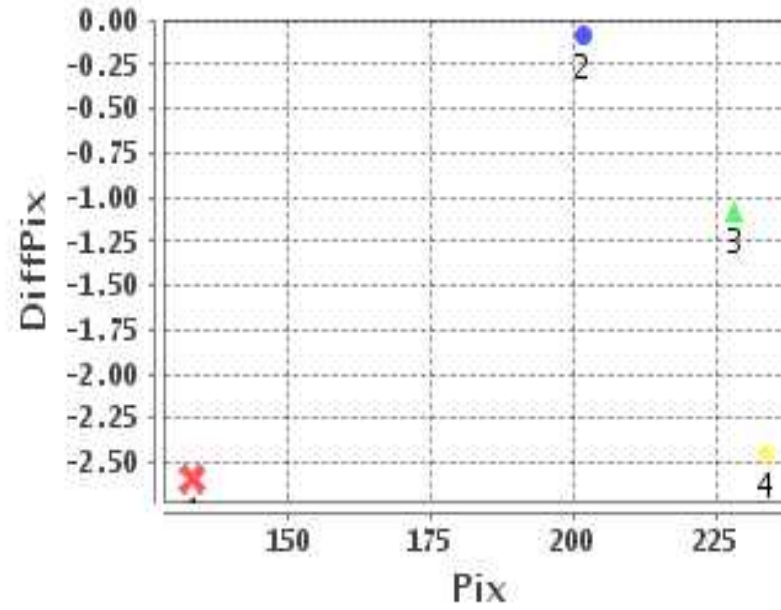
#### Radial Error ( Km )

Mean	17.521
Min	8.973
Max	24.603
CE90	22.780

### Error(Pixels) Vs. GCPPix



### Error(Pixels) Vs. GCPPix



#### Location Accuracy

	Mean	StdDev	RMS	Dir	* MinRMS	* MaxRMS
Along( Km )	9.733	4.137	10.576	N	8.094	11.787
Across ( Km )	-10.488	11.245	15.377	W	11.122	17.376

## Block-Wise Geo location Error Statistics

### Location Accuracy,Scale,ID

<b>Scan Range-0-105; Pix Range-0-127</b>		
Number of GCPs	-999	
<b>Location Error(Km)</b>		
Along(Mean,Dir)	-999.99	NotAvail
Across(Mean,Dir)	-999.99	NotAvail
<b>Scale(Km)</b>		
Average Scale (Mean,%Variation)	-999.99	-999.9
<b>Internal Distortion(Pixel)</b>		
Along(Mean,Stddev)	-999.99	-999.99
Across(Mean,Stddev)	-999.99	-999.99

<b>Scan Range-0-105; Pix Range-127-255</b>		
Number of GCPs	-999	
<b>Location Error(Km)</b>		
Along(Mean,Dir)	-999.99	NotAvail
Across(Mean,Dir)	-999.99	NotAvail
<b>Scale(Km)</b>		
Average Scale (Mean,%Variation)	-999.99	-999.9
<b>Internal Distortion(Pixel)</b>		
Along(Mean,Stddev)	-999.99	-999.99
Across(Mean,Stddev)	-999.99	-999.99

<b>Scan Range-0-105; Pix Range-255-384</b>		
Number of GCPs	-999	
<b>Location Error(Km)</b>		
Along(Mean,Dir)	-999.99	NotAvail
Across(Mean,Dir)	-999.99	NotAvail
<b>Scale(Km)</b>		
Average Scale (Mean,%Variation)	-999.99	-999.9
<b>Internal Distortion(Pixel)</b>		
Along(Mean,Stddev)	-999.99	-999.99
Across(Mean,Stddev)	-999.99	-999.99

<b>Scan Range-105-212; Pix Range-0-127</b>		
Number of GCPs	-999	
<b>Location Error(Km)</b>		
Along(Mean,Dir)	-999.99	NotAvail
Across(Mean,Dir)	-999.99	NotAvail
<b>Scale(Km)</b>		
Average Scale (Mean,%Variation)	-999.99	-999.9
<b>Internal Distortion(Pixel)</b>		
Along(Mean,Stddev)	-999.99	-999.99
Across(Mean,Stddev)	-999.99	-999.99

<b>Scan Range-105-212; Pix Range-127-255</b>		
Number of GCPs	1	
<b>Location Error(Km)</b>		
Along(Mean,Dir)	5.53	N
Across(Mean,Dir)	-23.97	W
<b>Scale(Km)</b>		
Average Scale (Mean,%Variation)	-999.99	-999.9
<b>Internal Distortion(Pixel)</b>		
Along(Mean,Stddev)	-999.99	-999.99
Across(Mean,Stddev)	-999.99	-999.99

<b>Scan Range-105-212; Pix Range-255-384</b>		
Number of GCPs	-999	
<b>Location Error(Km)</b>		
Along(Mean,Dir)	-999.99	NotAvail
Across(Mean,Dir)	-999.99	NotAvail
<b>Scale(Km)</b>		
Average Scale (Mean,%Variation)	-999.99	-999.9
<b>Internal Distortion(Pixel)</b>		
Along(Mean,Stddev)	-999.99	-999.99
Across(Mean,Stddev)	-999.99	-999.99

<b>Scan Range-212-320; Pix Range-0-127</b>		
Number of GCPs	-999	
<b>Location Error(Km)</b>		
Along(Mean,Dir)	-999.99	NotAvail
Across(Mean,Dir)	-999.99	NotAvail
<b>Scale(Km)</b>		
Average Scale (Mean,%Variation)	-999.99	-999.9
<b>Internal Distortion(Pixel)</b>		
Along(Mean,Stddev)	-999.99	-999.99
Across(Mean,Stddev)	-999.99	-999.99

<b>Scan Range-212-320; Pix Range-105-255</b>		
Number of GCPs	3	
<b>Location Error(Km)</b>		
Along(Mean,Dir)	11.134	N
Across(Mean,Dir)	-5.99	W
<b>Scale(Km)</b>		
Average Scale (Mean,%Variation)	9.05	9.51
<b>Internal Distortion(Pixel)</b>		
Along(Mean,Stddev)	0.11	0.33
Across(Mean,Stddev)	1.68	0.69

<b>Scan Range-212-320; Pix Range-255-384</b>		
Number of GCPs	-999	
<b>Location Error(Km)</b>		
Along(Mean,Dir)	-999.99	NotAvail
Across(Mean,Dir)	-999.99	NotAvail
<b>Scale(Km)</b>		
Average Scale (Mean,%Variation)	-999.99	-999.9
<b>Internal Distortion(Pixel)</b>		
Along(Mean,Stddev)	-999.99	-999.99
Across(Mean,Stddev)	-999.99	-999.99

\*-999 : no gcp available

\* -999.99 : values are not computed