

DQE Online Report: GDQE BBR for INSAT-3D IMAGER

RequestID : 3DIMG10FEB20170600L1CSGP

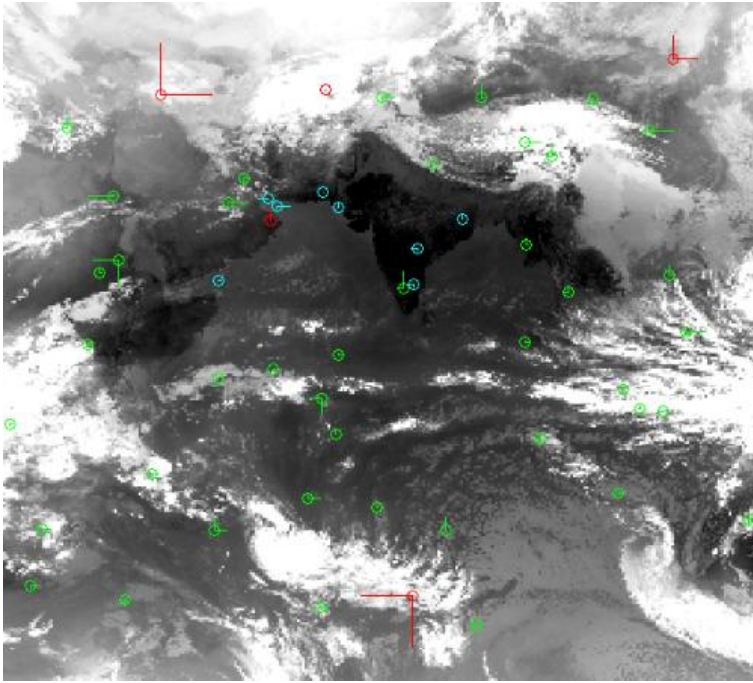
(-999.99 or -999.0 - Not Available/Not Computed)

Satellite	INSAT-3D	TimeOfPass	06:00	ImagingMode	NONE	Roll (deg)	-999.00
Sensor	IMAGER	ProductType	SECTOR	Altitude(m)	36000000.00	Pitch (deg)	-999.00
DateOfPass	10-02-17	LevelOfProcessing	L1C	ReferenceBand	TIR1	Yaw (deg)	-999.00
Algorithm Used	CORR	Format	hdf5-1.8.8	NoOfBands	6		
DQEDate	14-FEB-2017						

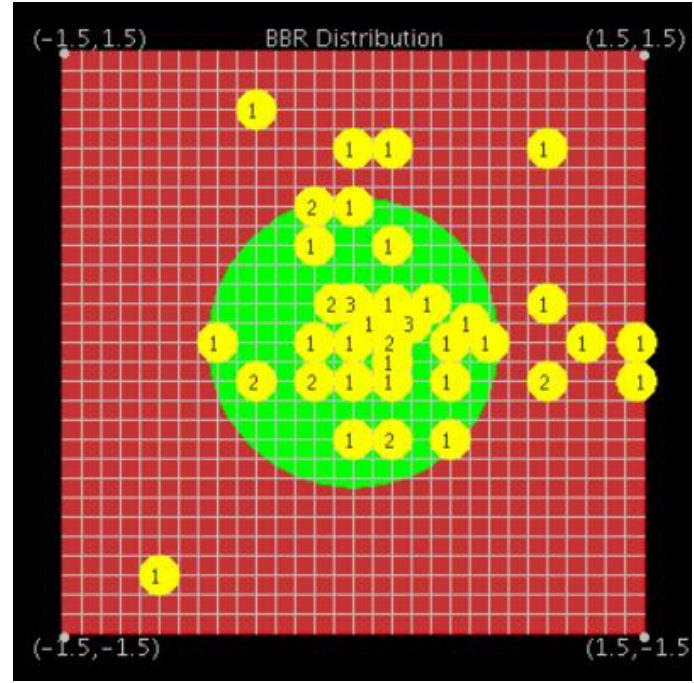
Band	AvgBBR		RMSBBR		STDBBR		MAXBBR		MINBBR		ABS		Range		CE_90 (Pixels)	TotRCPs
	Scan	Pixel	Scan	Pixel	Scan	Pixel	Scan	Pixel	Scan	Pixel	Scan	Pixel	Scan	Pixel		
MIR	-0.04	0.15	0.54	0.74	0.54	0.72	2.00	2.00	-1.25	-2.00	2.00	-2.00	3.25	4.00	1.52	50
SWIR	-0.43	-0.21	1.16	1.27	1.07	1.25	1.00	2.25	-2.00	-2.00	-2.00	2.25	3.00	4.25	2.66	15
TIR2	-0.01	-0.45	0.46	0.97	0.46	0.86	2.00	1.00	-1.50	-5.75	2.00	-5.75	3.50	6.75	1.12	55
VIS	-0.60	-0.52	1.17	1.75	1.00	1.67	1.25	1.25	-2.75	-5.75	-2.75	-5.75	4.00	7.00	3.75	21

Band-to-Band Registration - Band Name MIR

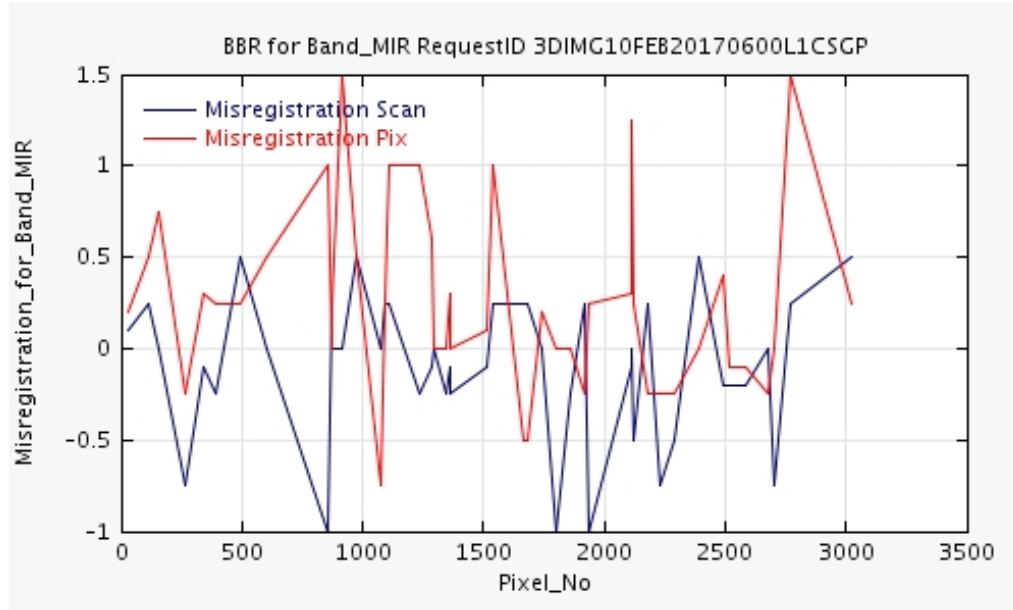
RCP Distribution



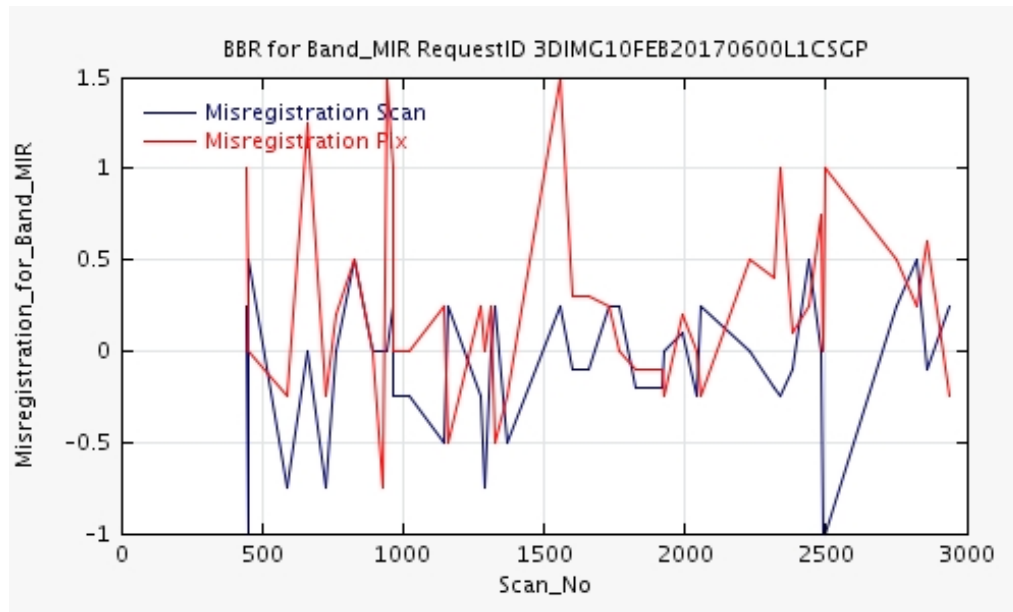
BBR Deviation



BBR Variation in Across Direction

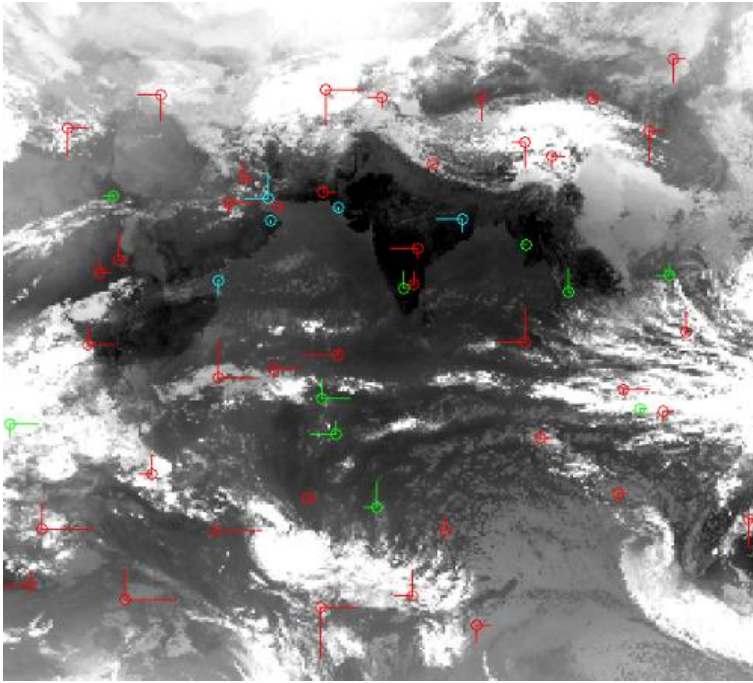


BBR Variation in Along Direction

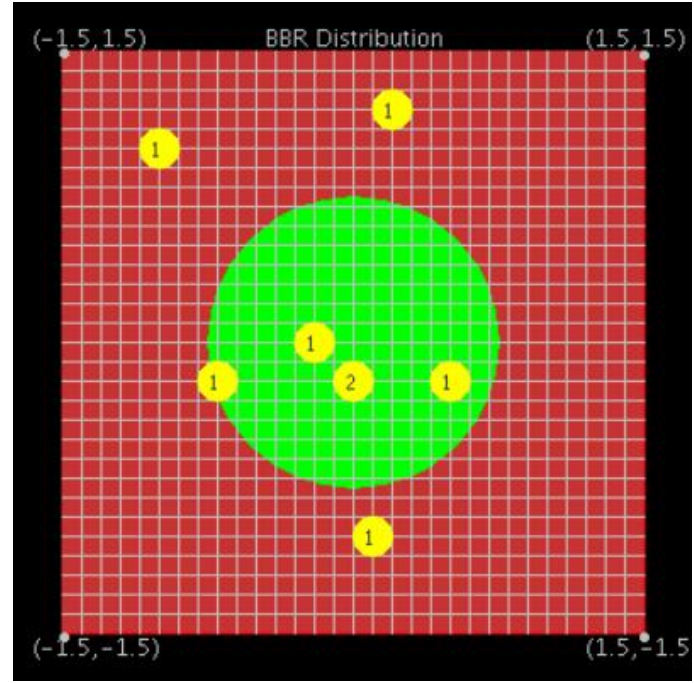


Band-to-Band Registration - Band Name SWIR

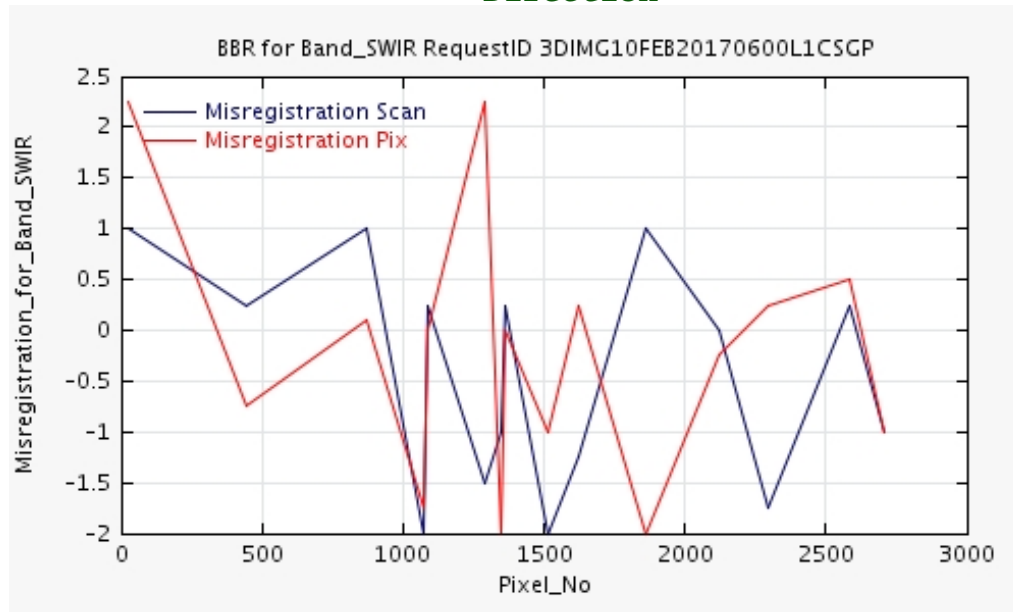
RCP Distribution



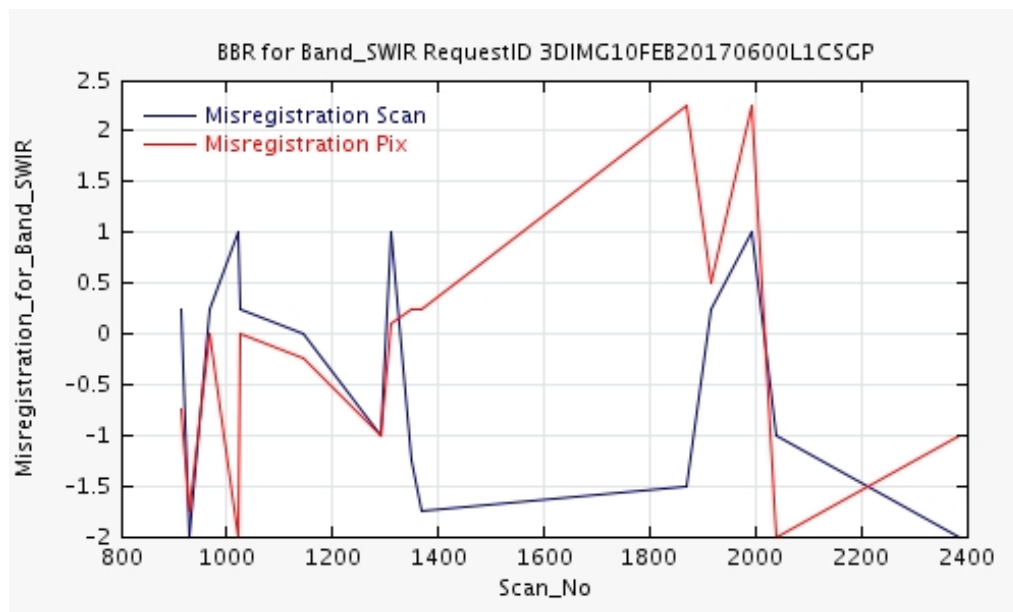
BBR Deviation



BBR Variation in Across Direction

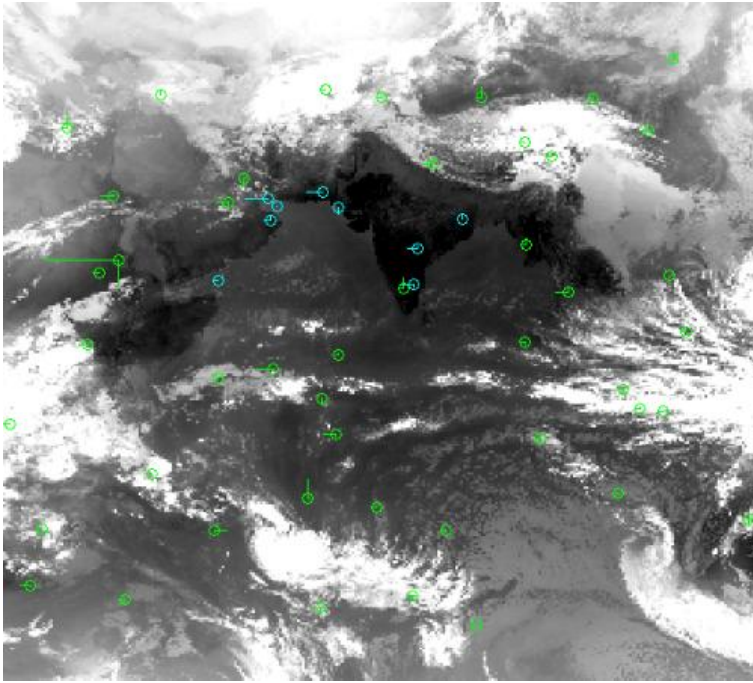


BBR Variation in Along Direction

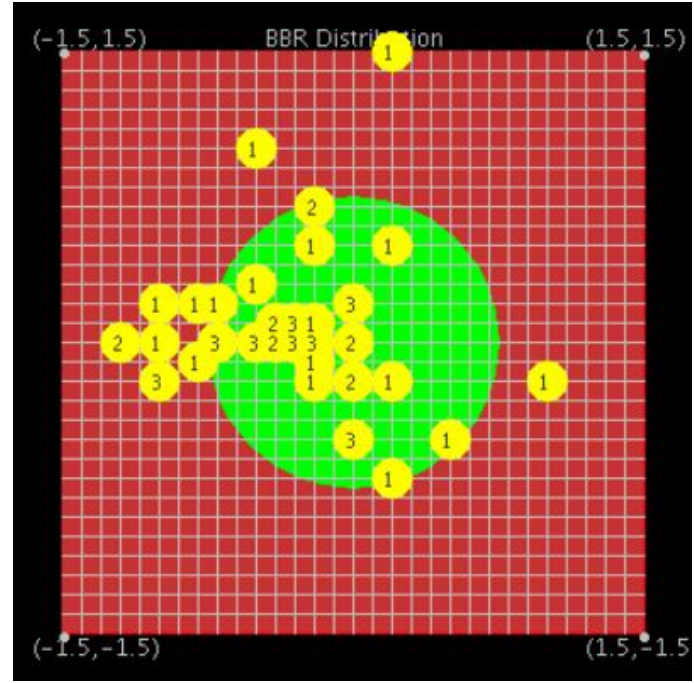


Band-to-Band Registration - Band Name TIR2

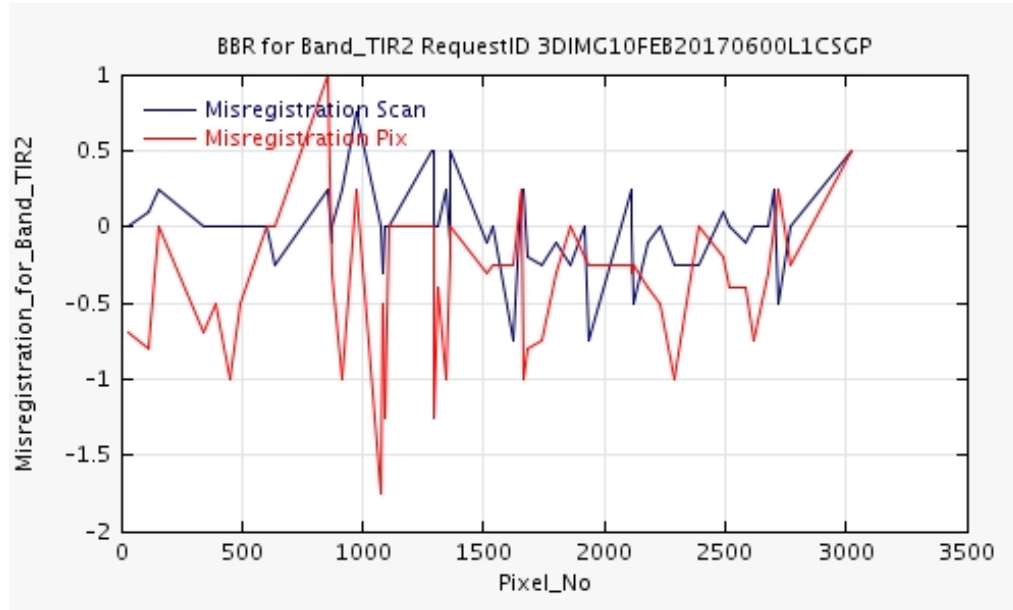
RCP Distribution



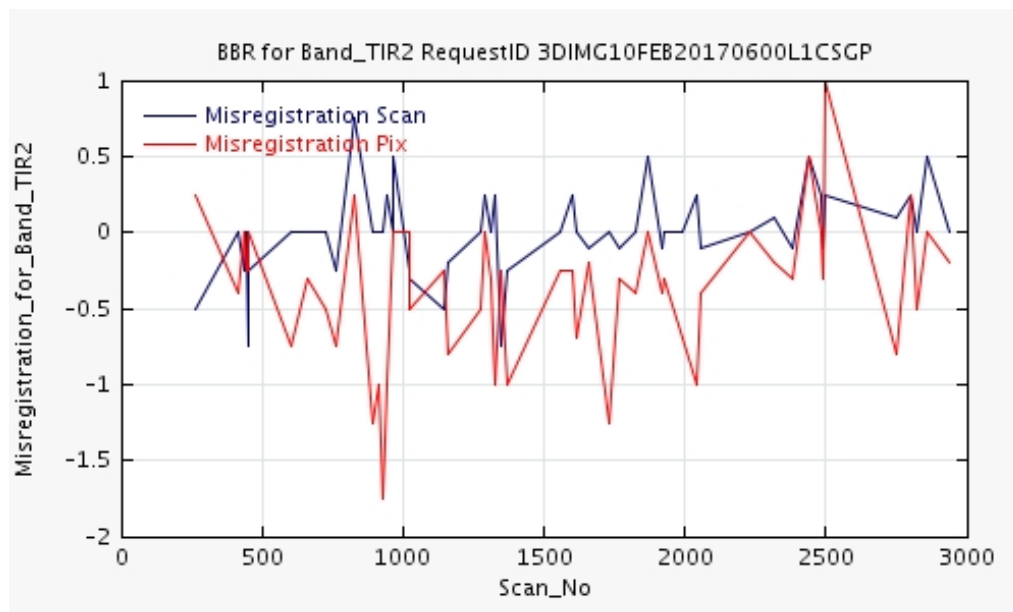
BBR Deviation



BBR Variation in Across Direction

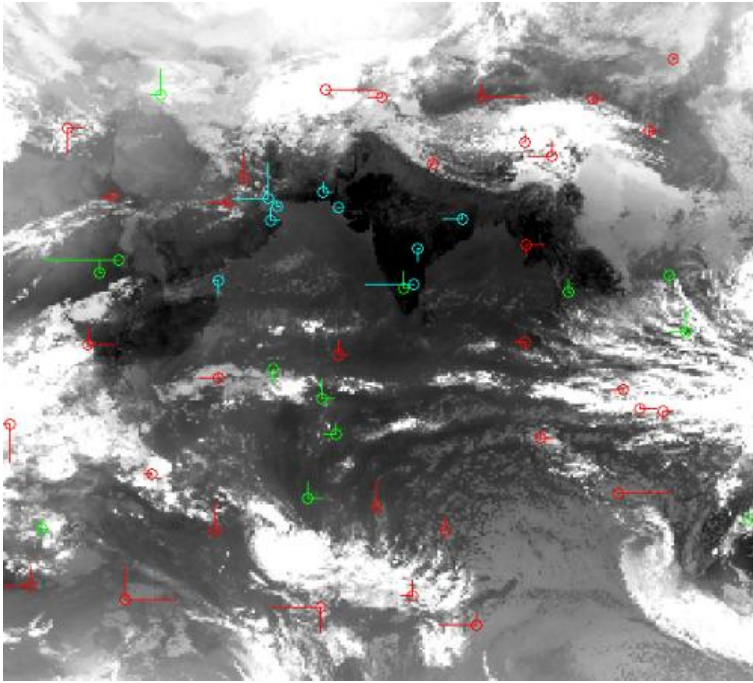


BBR Variation in Along Direction

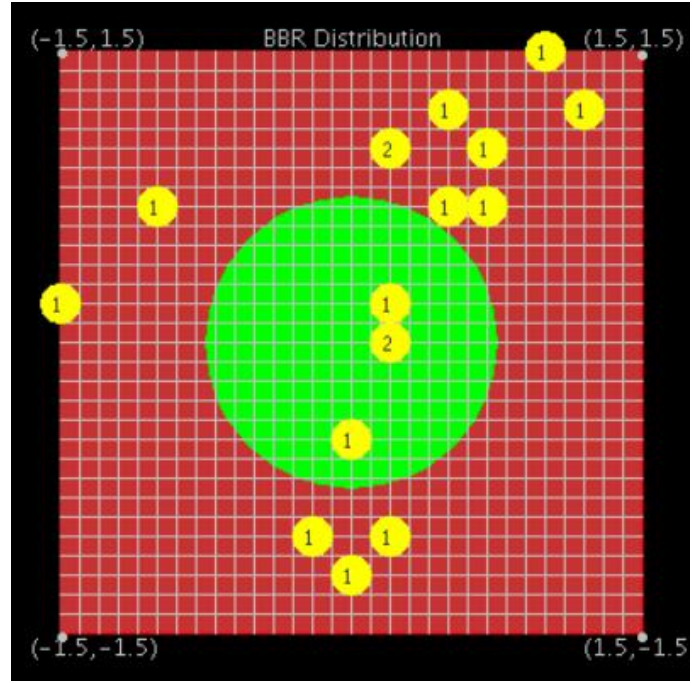


Band-to-Band Registration - Band Name VIS

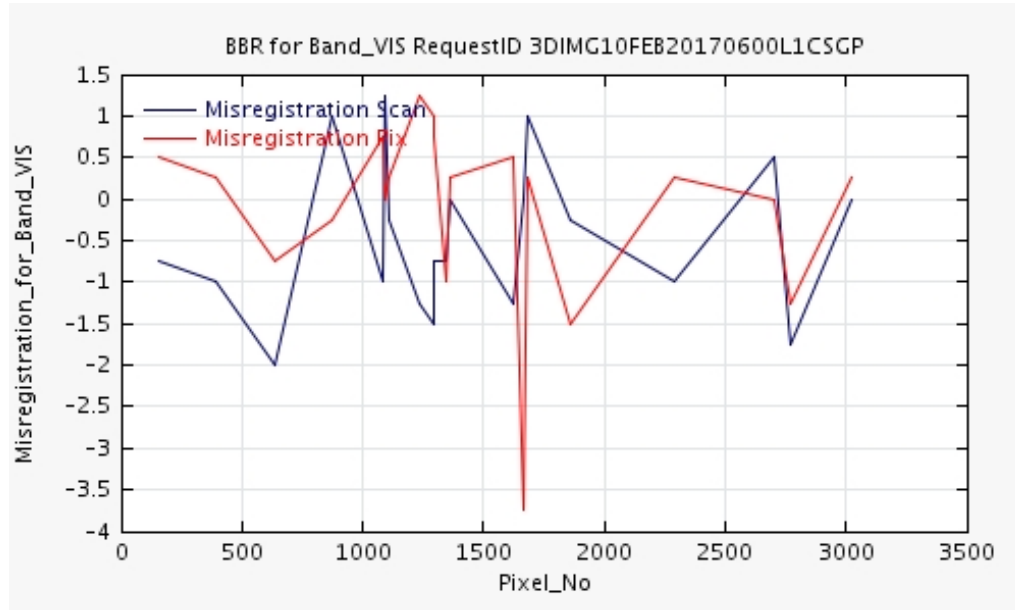
RCP Distribution



BBR Deviation



BBR Variation in Across Direction



BBR Variation in Along Direction

