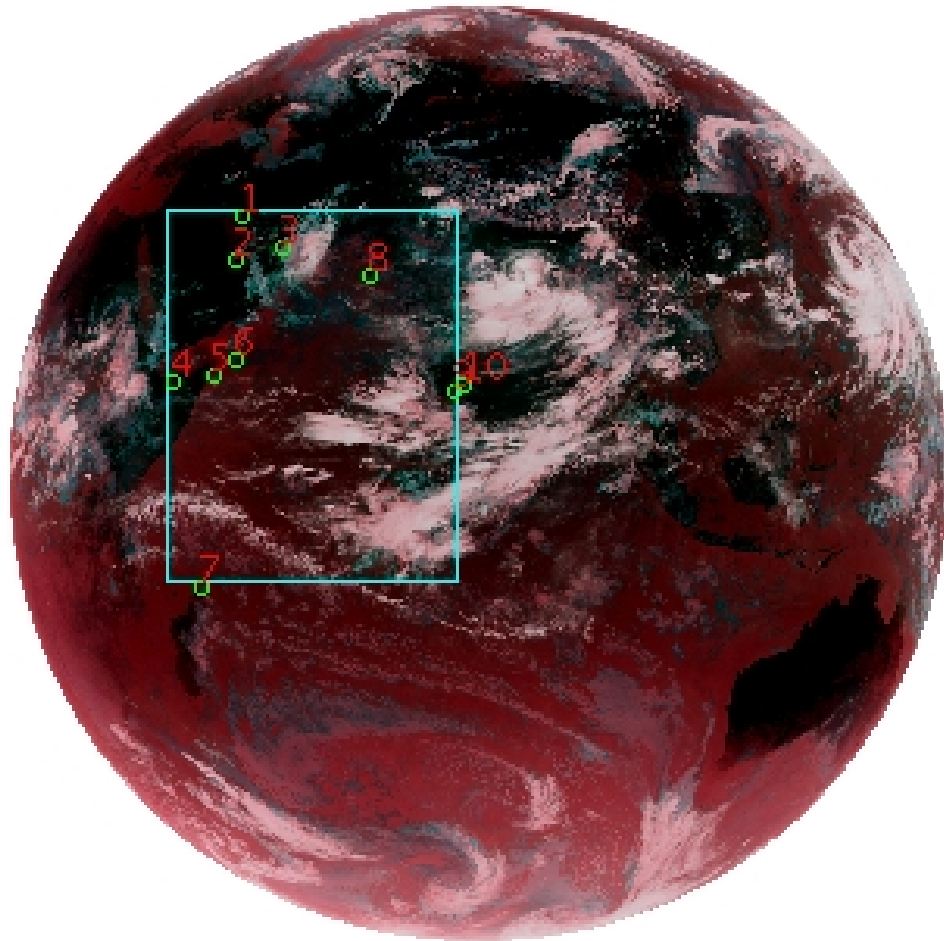


# DQE Report: Location Accuracy of INSAT-3D-IMG STANDARD(FULL DISK) Product 3DIMG\_12AUG2019\_0600

**Satellite** INSAT-3D      **No Of Bands** 6      **Product Type** STANDARD  
**Sensor** IMG      **LvlOfProcess** L1B      **Selected Band** 2-TIR1  
**DOP/Time** 12-08-19/06:00      **Station ID** BES      **Field View(deg)** 17.974  
**Res(Y,X) [Km]** (4.0,4.0)      **Res(Y,X) [uRad]** (112.0,112.0)

(81.042N,0.843W)

(81.042N,163.157E)



(-81.042S,0.843W)

(-81.042S,163.157E)

GCP Distribution overview for 3DIMG12AUG20190600L1BSTD

**Image Width:** 2805      **Image Height:** 2816      **No Of GCPs:** 10

**GCP Coverage(%)** 38.01      **(N-S)** 29.99      **(E-W)**

## Location Error(E)

**Legend**      — 0Km < E <= 50Km      — 50Km < E <= 100Km      — E >100Km

## Location Error (In IR Pixels)

	Mean	Direction	Stddev	RMS
Along	0.572	N	1.165	1.298
Across	-2.978	W	1.257	3.232

## Scale (Km)

	Pixel Size	Stddev	%variation
Average	4.504	0.467	12.611
Along	4.420	0.437	10.502
Across	4.841	2.539	21.015

## Internal Distortion (in IR Pixels)

	PeakToPeak	Mean	Stddev	RMS
Along	3.975	-0.089	1.13	1.138
Across	3.020	0.163	1.00	1.009

## Attitude Residuals (Deg)

Pitch	Roll	Yaw
-0.01901	-0.01287	0.12644

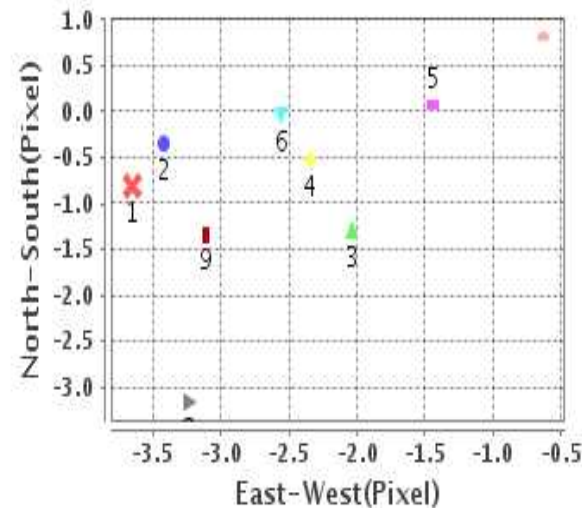
## Reference Used

Sensor	Resolution	Projection
ETM	500.00	GGP

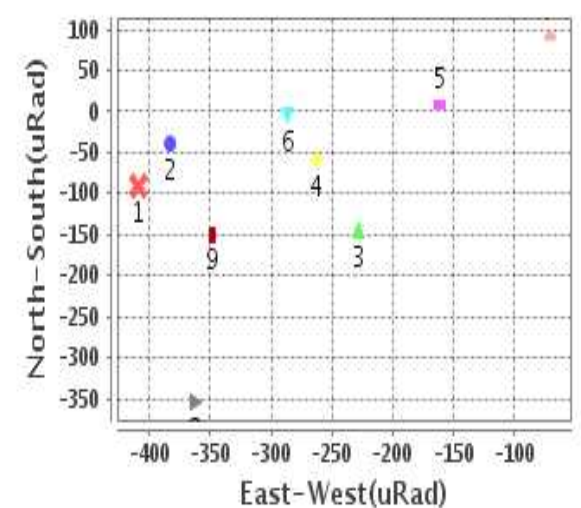
## Radial Error (in IR Pixels)

<b>Mean</b>	3.258
<b>Min</b>	1.349
<b>Max</b>	5.630
<b>CE90</b>	4.442

## Location Error For GCPs(Pixel)



## Location Error For GCPs(uRad)



## Detailed Product Information

### Ancillary Info

<b>Satellite</b>	INSAT-3D	<b>Generation Date</b>	12-08-19
<b>Sensor</b>	IMG	<b>DQE Date</b>	14-08-2019
<b>PassType</b>	NONE	<b>Aquisition Date</b>	12-08-19
<b>Imaging Mode</b>	FULL_FRAME	<b>Aquisition Time(GMT)</b>	06:00
<b>Sat Altitude(m)</b>	3.6E7	<b>Nominal Altitude(Km)</b>	3.6E7
<b>Station</b>	BES	<b>Predicted Altitude(Km)</b>	-999.99
<b>Sat Location(deg)</b>	-999.99 E	<b>Nominal Center Lat(deg)</b>	0.0
<b>Format</b>	hdf5-1.8.8	<b>Nominal Center Lon(deg)</b>	82.0
<b>LvlOfProcessing</b>	STANDARD(FULL)	<b>Predicted Center Lat(deg)</b>	-999.99
<b>DP JobId</b>	3DIMG_12AUG2	<b>Predicted Center Lon(deg)</b>	-999.99
<b>ProductCode</b>	NONE		
<b>Field View(deg)</b>	17.974		

### Projection Parameters

<b>Projection</b>	None
<b>Ellipsoid</b>	WGS_84
<b>Datum</b>	WGS_84
<b>Zone</b>	NotAvail
<b>Semi_Major_Axis(Km)</b>	6378.14
<b>Semi_Minor_Axis(Km)</b>	6356.75
<b>Standard_Parallel1(deg)</b>	-999.99
<b>Standard_Parallel2(deg)</b>	-999.99
<b>Projection_Origin_Lon(deg)</b>	-999.99
<b>Projection_Origin_Lat(deg)</b>	-999.99
<b>Projection_False_Easting(Km)</b>	-999.99
<b>Projection_False_Northing(Km)</b>	-999.99

### Scene Center Desc

<b>Centre Lat(deg)</b>	0.0
<b>Center Lon(deg)</b>	82.0
<b>Centre Roll(deg)</b>	-999.0
<b>Centre Pitch(deg)</b>	-999.0
<b>Center Yaw(deg)</b>	-999.0
<b>SunElevation(deg)</b>	-999.99
<b>SunAzimuth(deg)</b>	-999.99
<b>SatElevation(deg)</b>	-999.99
<b>SatAzimuth(deg)</b>	-999.99

### Scene Corner Desc

<b>NW_Lat(deg)</b>	81.042
<b>NW_Lon(deg)</b>	0.843
<b>SW_Lat(deg)</b>	-81.042
<b>SW_Lon(deg)</b>	0.843
<b>NE_Lat(deg)</b>	81.042
<b>NE_Lon(deg)</b>	163.157
<b>SE_Lat(deg)</b>	-81.042
<b>SE_Lon(deg)</b>	163.157

### Band Wise Details

	Res_AL(Km)	Res_AX(Km)	Image Height	Image Width
<b>MIR</b>	4.0	4.0	2816	2805
<b>SWIR</b>	1.0	1.0	11264	11220
<b>TIR1</b>	4.0	4.0	2816	2805
<b>TIR2</b>	4.0	4.0	2816	2805
<b>VIS</b>	1.0	1.0	11264	11220
<b>WV</b>	8.0	8.0	1408	1402

## GDQE Computation Base

<b>Projection</b>	MER	<b>Wildpoint Rejection Threshold</b>	2.60	<b>SemiMajorAxis(m)</b>	6378137.00	<b>Mode Of Computation</b>	grid
<b>Ellipsoid</b>	WGS_84		-sigma	<b>SemiMinorAxis(m)</b>	6356752.31	<b>Used Reference Type</b>	REFINSREF
<b>Datum</b>	WGS_84	<b>Unit</b>	pixels	<b>Standardparallel1(deg)</b>	17.0		
<b>Zone</b>	Not Applicable			<b>Standardparallel2(deg)</b>	17.0		

\* -999.99 : Not Applicable/Not Available

## References

**JobId : 3DIMG12AUG20190600L1BSTD**

(-999.99 - Not Available/Not Computed)

Ref.No	Source	File Name	Resolution ( m )	Projection
1	ETM	world_Band1.img	500.0	GGP

## Location Accuracy

### GCP Distribution Statistics

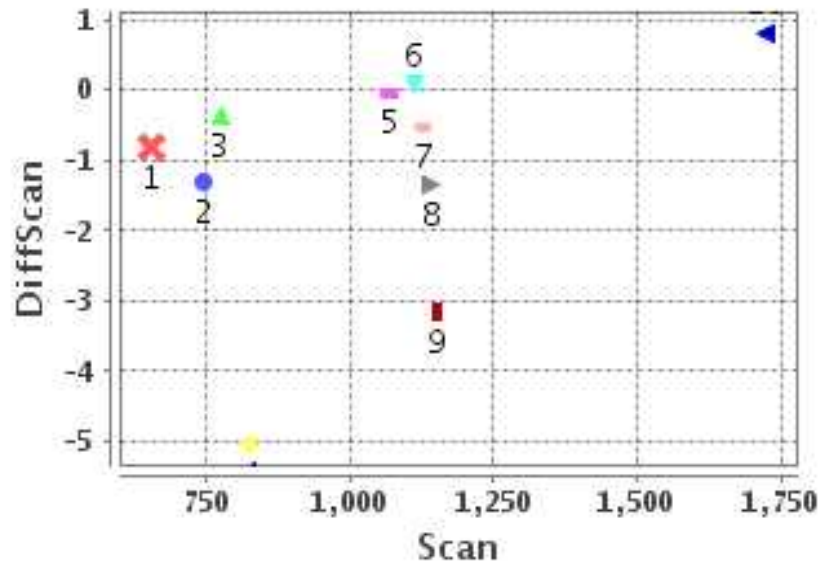
Image Width (pixels) : 2805      Image Height (pixels) : 2816      No of GCPs : 10

	Mean	StdDev	Min	Max	Coverage(in %)
<b>GCP Scan</b>	1032.5	292.5	653.0	1723.25	38.01 (N-S)
<b>GCP Pix</b>	836.8	287.7	506.0	1347.25	29.99 (E-W)

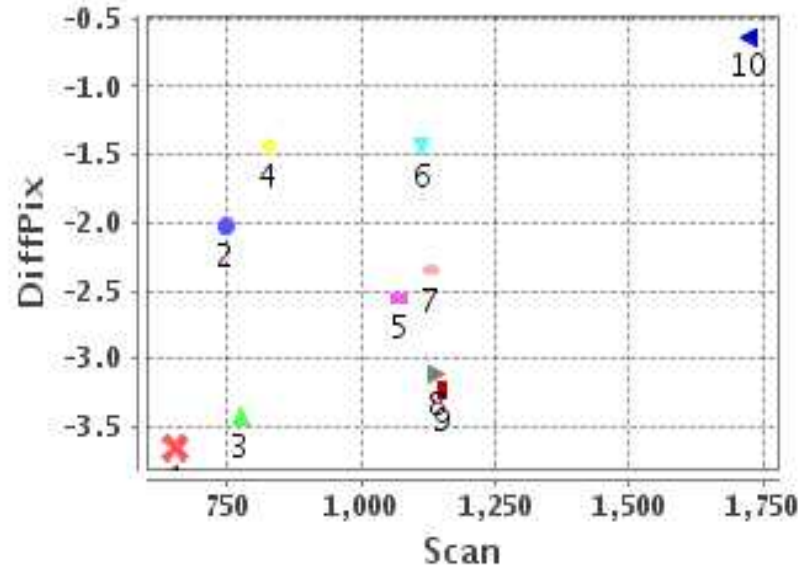
### Identified Control Point details : ( Differences are Reference - Product )

No	Scan	Pix	DiffScan (line)	DiffPix (pixel)	DifLat (Km)	Dir	DifLon (Km)	Dir	Status
1	653.0	710.2	-0.8	-3.65	6.096	N	21.678	W	Accepted
2	774.5	686.5	-0.4	-3.42	0.134	N	15.843	W	Accepted
3	745.5	824.2	-1.3	-2.03	4.501	N	10.074	W	Accepted
4	1128.2	506.0	-0.5	-2.35	2.027	N	13.075	W	Accepted
5	1111.5	626.0	0.1	-1.44	2.506	S	6.801	W	Accepted
6	1070.2	686.0	-0.0	-2.56	0.162	S	12.680	W	Accepted
7	1723.2	587.2	0.8	-0.63	4.611	S	2.800	W	Accepted
8	826.0	1075.0	-5.0	-1.43	23.596	N	8.481	W	Rejected
9	1152.2	1319.0	-3.2	-3.23	11.991	N	13.114	W	Accepted
10	1140.5	1347.2	-1.3	-3.11	3.135	N	11.130	W	Accepted

### Error(Pixels) Vs. GCPScan



### Error(Pixels) Vs. GCPScan



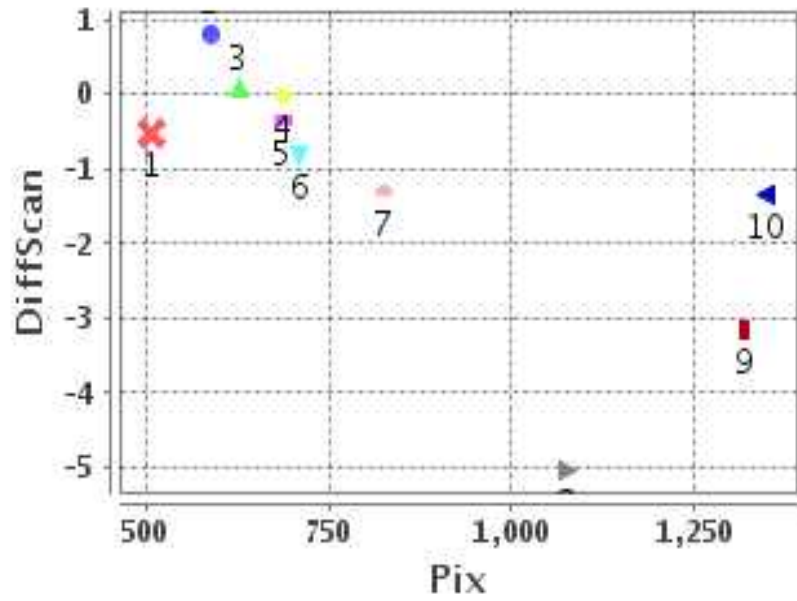
#### Number Of Points

North	6
South	3
East	0
West	9

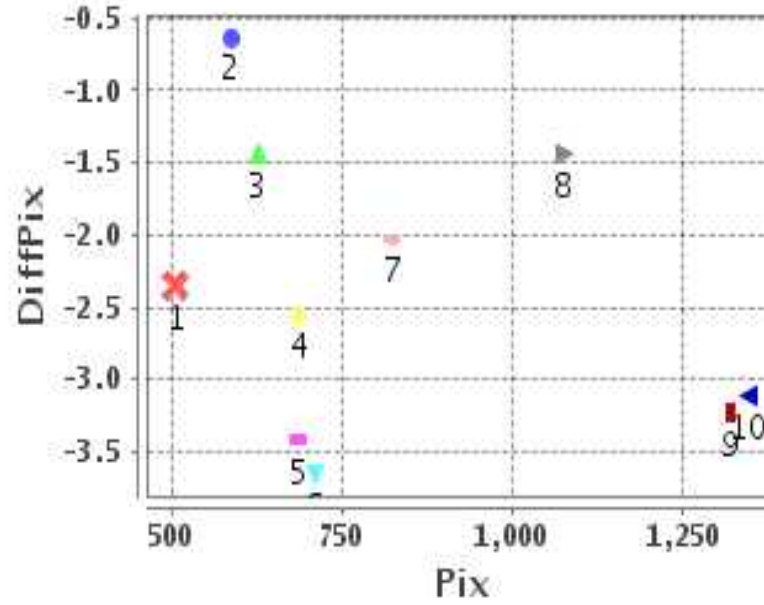
#### Radial Error ( Km )

Mean	3.258
Min	1.349
Max	5.630
CE90	4.442

### Error(Pixels) Vs. GCPPix



### Error(Pixels) Vs. GCPPix



#### Location Accuracy

	Mean	StdDev	RMS	Dir	* MinRMS	* MaxRMS
Along( Km )	0.572	1.165	1.298	N	0.879	1.377
Across ( Km )	-2.978	1.257	3.232	W	2.842	3.419

## Block-Wise Geo location Error Statistics

### Location Accuracy,Scale,ID

<b>Scan Range-0-937; Pix Range-0-934</b>			
Number of GCPs	3		
<b>Location Error(Km)</b>			
Along(Mean,Dir)	3.57333	N	
Across(Mean,Dir)	-15.87	W	
<b>Scale(Km)</b>			
Average Scale (Mean,%Variation)	5.58	39.40	
<b>Internal Distortion(Pixel)</b>			
Along(Mean,Stddev)	0.01	0.47	
Across(Mean,Stddev)	-0.58	0.81	

<b>Scan Range-0-937; Pix Range-934-1869</b>			
Number of GCPs	-999		
<b>Location Error(Km)</b>			
Along(Mean,Dir)	-999.99	NotAvail	
Across(Mean,Dir)	-999.99	NotAvail	
<b>Scale(Km)</b>			
Average Scale (Mean,%Variation)	-999.99	-999.9	
<b>Internal Distortion(Pixel)</b>			
Along(Mean,Stddev)	-999.99	-999.99	
Across(Mean,Stddev)	-999.99	-999.99	

<b>Scan Range-0-937; Pix Range-1869-2805</b>			
Number of GCPs	-999		
<b>Location Error(Km)</b>			
Along(Mean,Dir)	-999.99	NotAvail	
Across(Mean,Dir)	-999.99	NotAvail	
<b>Scale(Km)</b>			
Average Scale (Mean,%Variation)	-999.99	-999.9	
<b>Internal Distortion(Pixel)</b>			
Along(Mean,Stddev)	-999.99	-999.99	
Across(Mean,Stddev)	-999.99	-999.99	

<b>Scan Range-937-1876; Pix Range-0-934</b>			
Number of GCPs	4		
<b>Location Error(Km)</b>			
Along(Mean,Dir)	-1.315	S	
Across(Mean,Dir)	-8.84	W	
<b>Scale(Km)</b>			
Average Scale (Mean,%Variation)	4.41	10.19	
<b>Internal Distortion(Pixel)</b>			
Along(Mean,Stddev)	-0.16	0.55	
Across(Mean,Stddev)	-0.80	0.79	

<b>Scan Range-937-1876; Pix Range-934-1869</b>			
Number of GCPs	2		
<b>Location Error(Km)</b>			
Along(Mean,Dir)	7.5635	N	
Across(Mean,Dir)	-12.12	W	
<b>Scale(Km)</b>			
Average Scale (Mean,%Variation)	3.84	4.06	
<b>Internal Distortion(Pixel)</b>			
Along(Mean,Stddev)	1.83	0.00	
Across(Mean,Stddev)	-0.12	0.00	

<b>Scan Range-937-1876; Pix Range-1869-2805</b>			
Number of GCPs	-999		
<b>Location Error(Km)</b>			
Along(Mean,Dir)	-999.99	NotAvail	
Across(Mean,Dir)	-999.99	NotAvail	
<b>Scale(Km)</b>			
Average Scale (Mean,%Variation)	-999.99	-999.9	
<b>Internal Distortion(Pixel)</b>			
Along(Mean,Stddev)	-999.99	-999.99	
Across(Mean,Stddev)	-999.99	-999.99	

<b>Scan Range-1876-2816; Pix Range-0-934</b>			
Number of GCPs	-999		
<b>Location Error(Km)</b>			
Along(Mean,Dir)	-999.99	NotAvail	
Across(Mean,Dir)	-999.99	NotAvail	
<b>Scale(Km)</b>			
Average Scale (Mean,%Variation)	-999.99	-999.9	
<b>Internal Distortion(Pixel)</b>			
Along(Mean,Stddev)	-999.99	-999.99	
Across(Mean,Stddev)	-999.99	-999.99	

<b>Scan Range-1876-2816; Pix Range-937-1869</b>			
Number of GCPs	-999		
<b>Location Error(Km)</b>			
Along(Mean,Dir)	-999.99	NotAvail	
Across(Mean,Dir)	-999.99	NotAvail	
<b>Scale(Km)</b>			
Average Scale (Mean,%Variation)	-999.99	-999.9	
<b>Internal Distortion(Pixel)</b>			
Along(Mean,Stddev)	-999.99	-999.99	
Across(Mean,Stddev)	-999.99	-999.99	

<b>Scan Range-1876-2816; Pix Range-1869-2805</b>			
Number of GCPs	-999		
<b>Location Error(Km)</b>			
Along(Mean,Dir)	-999.99	NotAvail	
Across(Mean,Dir)	-999.99	NotAvail	
<b>Scale(Km)</b>			
Average Scale (Mean,%Variation)	-999.99	-999.9	
<b>Internal Distortion(Pixel)</b>			
Along(Mean,Stddev)	-999.99	-999.99	
Across(Mean,Stddev)	-999.99	-999.99	

\*-999 : no gcp available

\* -999.99 : values are not computed