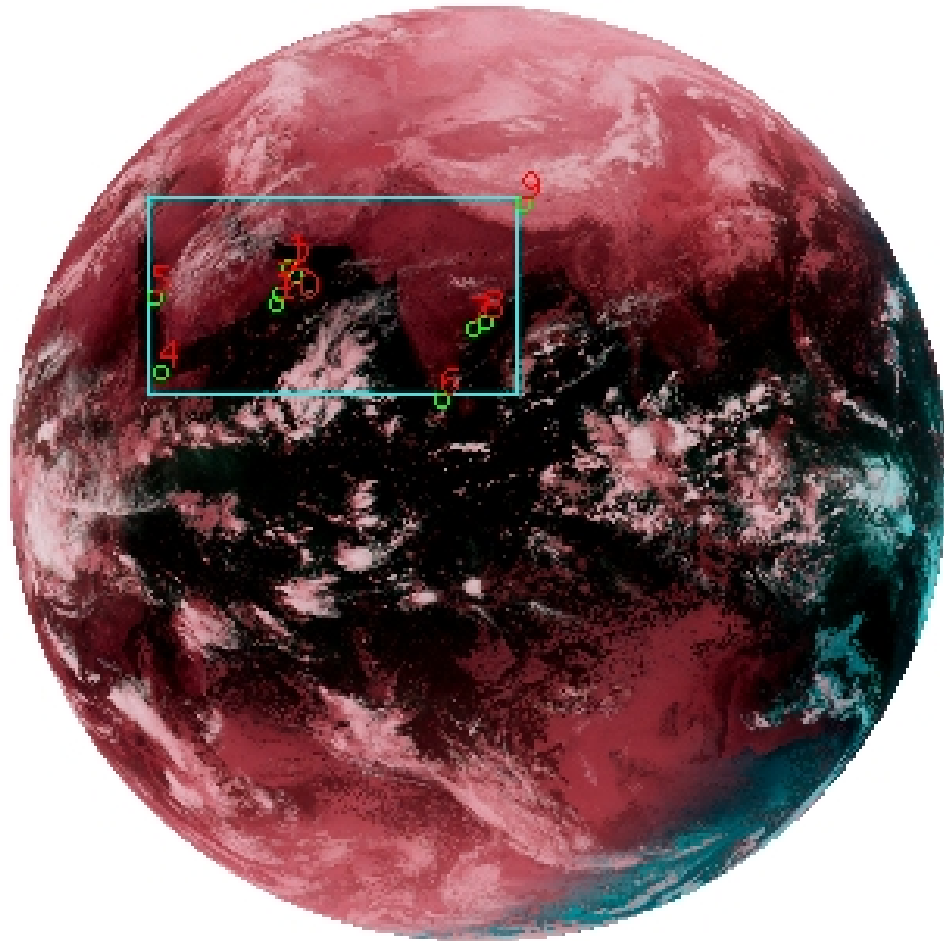


# DQE Report: Location Accuracy of INSAT-3D-IMG STANDARD(FULL DISK) Product 3DIMG\_01DEC2018\_2130

**Satellite** INSAT-3D      **No Of Bands** 6      **Product Type** STANDARD  
**Sensor** IMG      **LvlOfProcess** L1B      **Selected Band** 2-TIR1  
**DOP/Time** 01-12-18/21:30      **Station ID** BES      **Field View(deg)** 17.974  
**Res(Y,X) [Km]** (4.0,4.0)      **Res(Y,X) [uRad]** (112.0,112.0)

(81.042N,0.843W)

(81.042N,163.157E)



(-81.042S,0.843W)

(-81.042S,163.157E)

GCP Distribution overview for 3DIMG01DEC20182130L1BSTD

**Image Width:** 2805      **Image Height:** 2816      **No Of GCPs:** 10

**GCP Coverage(%)** 20.32      **(N-S)** 37.80      **(E-W)**

## Location Error(E)

**Legend**      — 0Km < E <= 50Km      — 50Km < E <= 100Km      — E >100Km

## Location Error (In IR Pixels)

	Mean	Direction	Stddev	RMS
Along	0.518	N	1.342	1.438
Across	-2.062	W	1.611	2.616

## Scale (Km)

	Pixel Size	Stddev	%variation
Average	4.560	0.334	13.989
Along	5.337	2.668	33.427
Across	5.236	2.154	30.905

## Internal Distortion (in IR Pixels)

	PeakToPeak	Mean	Stddev	RMS
Along	3.115	-0.288	1.18	1.214
Across	1.791	2.152	0.75	2.280

## Attitude Residuals (Deg)

Pitch	Roll	Yaw
-0.01605	-0.00932	0.10669

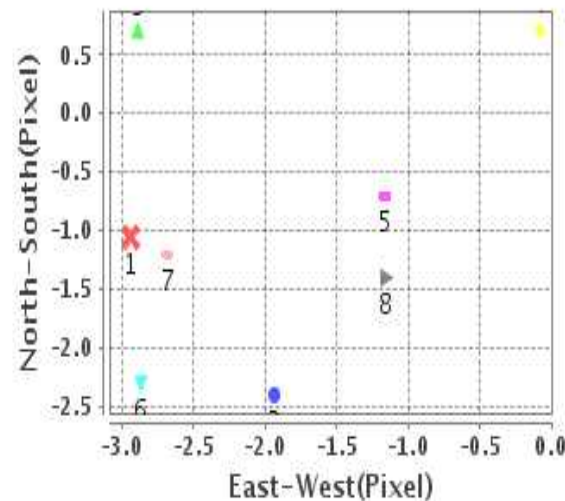
## Reference Used

Sensor	Resolution	Projection
ETM	500.00	GGP

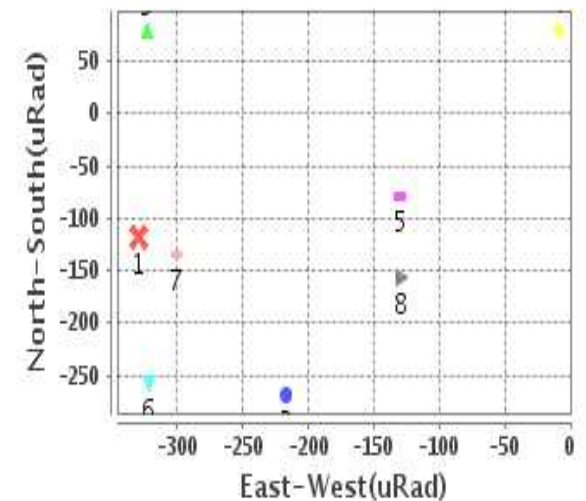
## Radial Error (in IR Pixels)

<b>Mean</b>	2.808
<b>Min</b>	1.237
<b>Max</b>	4.043
<b>CE90</b>	3.777

## Location Error For GCPs(Pixel)



## Location Error For GCPs(uRad)



## Detailed Product Information

### Ancillary Info

<b>Satellite</b>	INSAT-3D	<b>Generation Date</b>	02-12-18
<b>Sensor</b>	IMG	<b>DQE Date</b>	04-12-2018
<b>PassType</b>	NONE	<b>Aquisition Date</b>	01-12-18
<b>Imaging Mode</b>	FULL_FRAME	<b>Aquisition Time(GMT)</b>	21:30
<b>Sat Altitude(m)</b>	3.6E7	<b>Nominal Altitude(Km)</b>	3.6E7
<b>Station</b>	BES	<b>Predicted Altitude(Km)</b>	-999.99
<b>Sat Location(deg)</b>	-999.99 E	<b>Nominal Center Lat(deg)</b>	0.0
<b>Format</b>	hdf5-1.8.8	<b>Nominal Center Lon(deg)</b>	82.0
<b>LvlOfProcessing</b>	STANDARD(FULL	<b>Predicted Center Lat(deg)</b>	-999.99
<b>DP JobId</b>	3DIMG_01DEC20	<b>Predicted Center Lon(deg)</b>	-999.99
<b>ProductCode</b>	NONE		
<b>Field View(deg)</b>	17.974		

### Projection Parameters

<b>Projection</b>	None
<b>Ellipsoid</b>	WGS_84
<b>Datum</b>	WGS_84
<b>Zone</b>	NotAvail
<b>Semi_Major_Axis(Km)</b>	6378.14
<b>Semi_Minor_Axis(Km)</b>	6356.75
<b>Standard_Parallel1(deg)</b>	-999.99
<b>Standard_Parallel2(deg)</b>	-999.99
<b>Projection_Origin_Lon(deg)</b>	-999.99
<b>Projection_Origin_Lat(deg)</b>	-999.99
<b>Projection_False_Easting(Km)</b>	-999.99
<b>Projection_False_Northing(Km)</b>	-999.99

### Scene Center Desc

<b>Centre Lat(deg)</b>	0.0
<b>Center Lon(deg)</b>	82.0
<b>Centre Roll(deg)</b>	-999.0
<b>Centre Pitch(deg)</b>	-999.0
<b>Center Yaw(deg)</b>	-999.0
<b>SunElevation(deg)</b>	-999.99
<b>SunAzimuth(deg)</b>	-999.99
<b>SatElevation(deg)</b>	-999.99
<b>SatAzimuth(deg)</b>	-999.99

### Scene Corner Desc

<b>NW_Lat(deg)</b>	81.042
<b>NW_Lon(deg)</b>	0.843
<b>SW_Lat(deg)</b>	-81.042
<b>SW_Lon(deg)</b>	0.843
<b>NE_Lat(deg)</b>	81.042
<b>NE_Lon(deg)</b>	163.157
<b>SE_Lat(deg)</b>	-81.042
<b>SE_Lon(deg)</b>	163.157

### Band Wise Details

	Res_AL(Km)	Res_AX(Km)	Image Height	Image Width
<b>MIR</b>	4.0	4.0	2816	2805
<b>SWIR</b>	1.0	1.0	11264	11220
<b>TIR1</b>	4.0	4.0	2816	2805
<b>TIR2</b>	4.0	4.0	2816	2805
<b>VIS</b>	1.0	1.0	11264	11220
<b>WV</b>	8.0	8.0	1408	1402

## GDQE Computation Base

<b>Projection</b>	MER	<b>Wildpoint Rejection Threshold</b>	2.60	<b>SemiMajorAxis(m)</b>	6378137.00	<b>Mode Of Computation</b>	grid
<b>Ellipsoid</b>	WGS_84		-sigma	<b>SemiMinorAxis(m)</b>	6356752.31	<b>Used Reference Type</b>	REFINSREF
<b>Datum</b>	WGS_84	<b>Unit</b>	pixels	<b>Standardparallel1(deg)</b>	17.0		
<b>Zone</b>	Not Applicable			<b>Standardparallel2(deg)</b>	17.0		

\* -999.99 : Not Applicable/Not Available

## References

**JobId : 3DIMG01DEC20182130L1BSTD**

(-999.99 - Not Available/Not Computed)

Ref.No	Source	File Name	Resolution ( m )	Projection
1	ETM	world_Band1.img	500.0	GGP

## Location Accuracy

### GCP Distribution Statistics

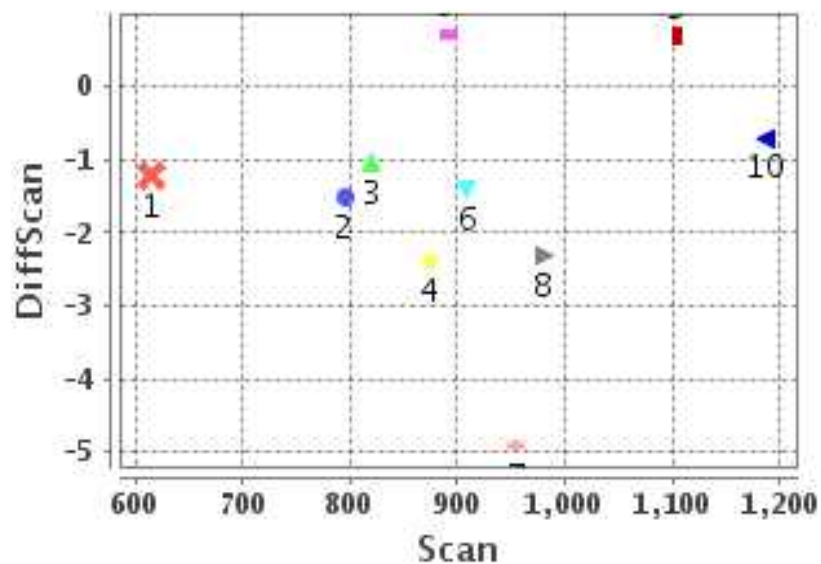
Image Width (pixels) : 2805      Image Height (pixels) : 2816      No of GCPs : 10

	Mean	StdDev	Min	Max	Coverage(in %)
<b>GCP Scan</b>	913.0	152.1	614.5	1186.75	20.32 (N-S)
<b>GCP Pix</b>	982.0	365.8	454.5	1514.75	37.80 (E-W)

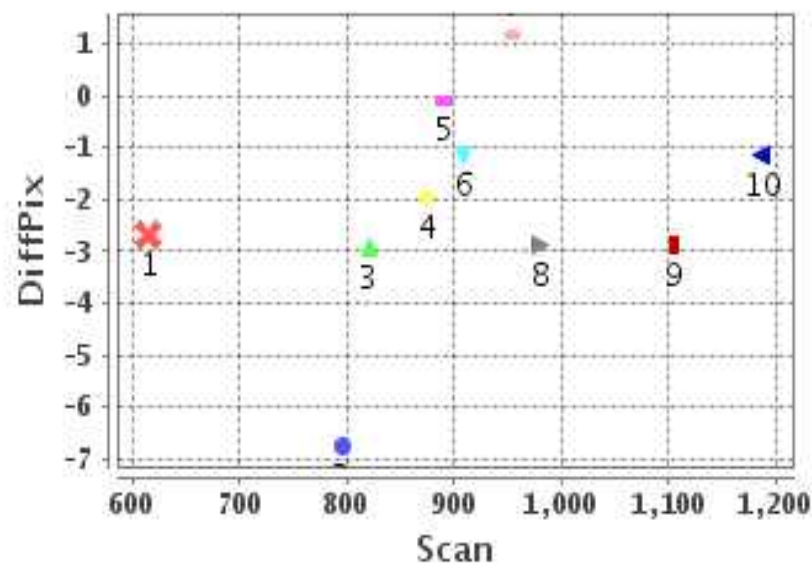
### Identified Control Point details : ( Differences are Reference - Product )

No	Scan	Pix	DiffScan (line)	DiffPix (pixel)	DifLat (Km)	Dir	DifLon (Km)	Dir	Status
1	795.5	844.8	-1.5	-6.75	6.674	N	30.340	W	Rejected
2	820.2	863.0	-1.1	-2.94	4.131	N	14.533	W	Accepted
3	874.5	816.0	-2.4	-1.94	9.375	N	10.762	W	Accepted
4	1104.5	469.0	0.7	-2.89	4.127	S	15.634	W	Accepted
5	890.8	454.5	0.7	-0.08	7.419	S	5.796	E	Accepted
6	1186.8	1279.0	-0.7	-1.16	0.227	S	4.942	W	Accepted
7	980.5	1370.0	-2.3	-2.87	7.965	N	11.773	W	Accepted
8	954.5	1407.2	-4.9	1.18	18.431	N	6.110	E	Rejected
9	614.5	1514.8	-1.2	-2.68	3.942	N	9.098	W	Accepted
10	908.8	801.2	-1.4	-1.15	2.943	N	5.029	W	Accepted

### Error(Pixels) Vs. GCPScan



### Error(Pixels) Vs. GCPScan



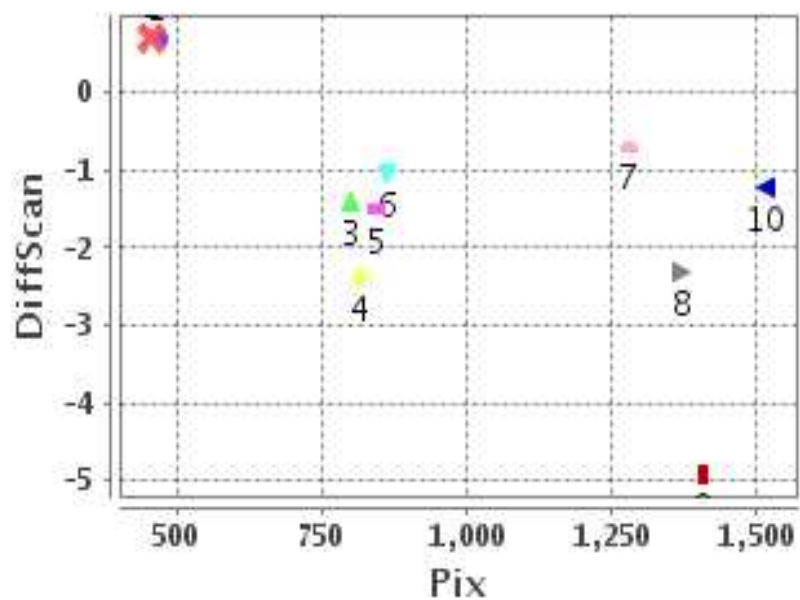
#### Number Of Points

North	5
South	3
East	1
West	7

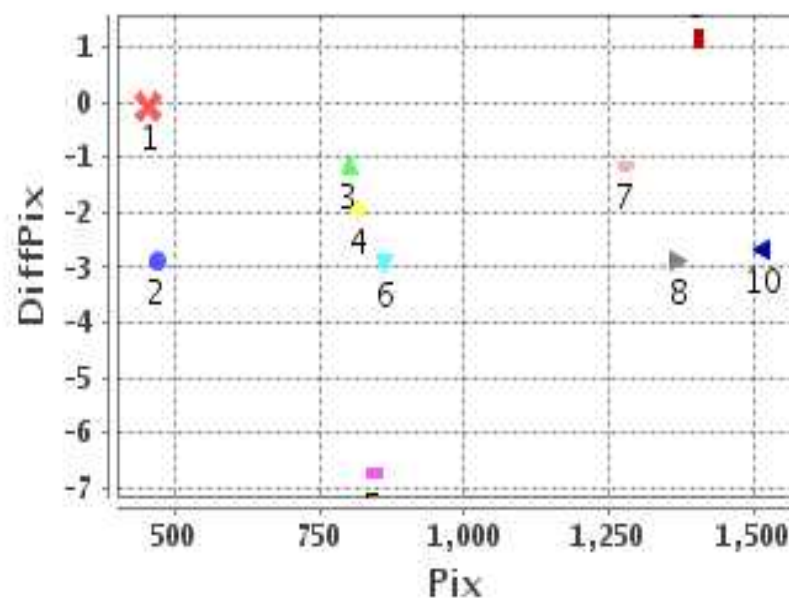
#### Radial Error ( Km )

Mean	2.808
Min	1.237
Max	4.043
CE90	3.777

### Error(Pixels) Vs. GCPPix



### Error(Pixels) Vs. GCPPix



#### Location Accuracy

	Mean	StdDev	RMS	Dir	* MinRMS	* MaxRMS
Along( Km )	0.518	1.342	1.438	N	1.257	1.537
Across ( Km )	-2.062	1.611	2.616	W	2.375	2.758

## Block-Wise Geo location Error Statistics

### Location Accuracy,Scale,ID

<b>Scan Range-0-937; Pix Range-0-934</b>			
Number of GCPs	4		
<b>Location Error(Km)</b>			
Along(Mean,Dir)	2.2575	N	
Across(Mean,Dir)	-6.13	W	
<b>Scale(Km)</b>			
Average Scale (Mean,%Variation)	4.80	20.03	
<b>Internal Distortion(Pixel)</b>			
Along(Mean,Stddev)	-0.02	1.30	
Across(Mean,Stddev)	1.93	0.73	

<b>Scan Range-0-937; Pix Range-934-1869</b>			
Number of GCPs	1		
<b>Location Error(Km)</b>			
Along(Mean,Dir)	3.95	N	
Across(Mean,Dir)	-9.10	W	
<b>Scale(Km)</b>			
Average Scale (Mean,%Variation)	-999.99	-999.9	
<b>Internal Distortion(Pixel)</b>			
Along(Mean,Stddev)	-999.99	-999.99	
Across(Mean,Stddev)	-999.99	-999.99	

<b>Scan Range-0-937; Pix Range-1869-2805</b>			
Number of GCPs	-999		
<b>Location Error(Km)</b>			
Along(Mean,Dir)	-999.99	NotAvail	
Across(Mean,Dir)	-999.99	NotAvail	
<b>Scale(Km)</b>			
Average Scale (Mean,%Variation)	-999.99	-999.9	
<b>Internal Distortion(Pixel)</b>			
Along(Mean,Stddev)	-999.99	-999.99	
Across(Mean,Stddev)	-999.99	-999.99	

<b>Scan Range-937-1876; Pix Range-0-934</b>			
Number of GCPs	1		
<b>Location Error(Km)</b>			
Along(Mean,Dir)	-4.13	S	
Across(Mean,Dir)	-15.64	W	
<b>Scale(Km)</b>			
Average Scale (Mean,%Variation)	-999.99	-999.9	
<b>Internal Distortion(Pixel)</b>			
Along(Mean,Stddev)	-999.99	-999.99	
Across(Mean,Stddev)	-999.99	-999.99	

<b>Scan Range-937-1876; Pix Range-934-1869</b>			
Number of GCPs	2		
<b>Location Error(Km)</b>			
Along(Mean,Dir)	3.8715	N	
Across(Mean,Dir)	-8.36	W	
<b>Scale(Km)</b>			
Average Scale (Mean,%Variation)	4.04	1.10	
<b>Internal Distortion(Pixel)</b>			
Along(Mean,Stddev)	-1.61	0.00	
Across(Mean,Stddev)	1.71	0.00	

<b>Scan Range-937-1876; Pix Range-1869-2805</b>			
Number of GCPs	-999		
<b>Location Error(Km)</b>			
Along(Mean,Dir)	-999.99	NotAvail	
Across(Mean,Dir)	-999.99	NotAvail	
<b>Scale(Km)</b>			
Average Scale (Mean,%Variation)	-999.99	-999.9	
<b>Internal Distortion(Pixel)</b>			
Along(Mean,Stddev)	-999.99	-999.99	
Across(Mean,Stddev)	-999.99	-999.99	

<b>Scan Range-1876-2816; Pix Range-0-934</b>			
Number of GCPs	-999		
<b>Location Error(Km)</b>			
Along(Mean,Dir)	-999.99	NotAvail	
Across(Mean,Dir)	-999.99	NotAvail	
<b>Scale(Km)</b>			
Average Scale (Mean,%Variation)	-999.99	-999.9	
<b>Internal Distortion(Pixel)</b>			
Along(Mean,Stddev)	-999.99	-999.99	
Across(Mean,Stddev)	-999.99	-999.99	

<b>Scan Range-1876-2816; Pix Range-937-1869</b>			
Number of GCPs	-999		
<b>Location Error(Km)</b>			
Along(Mean,Dir)	-999.99	NotAvail	
Across(Mean,Dir)	-999.99	NotAvail	
<b>Scale(Km)</b>			
Average Scale (Mean,%Variation)	-999.99	-999.9	
<b>Internal Distortion(Pixel)</b>			
Along(Mean,Stddev)	-999.99	-999.99	
Across(Mean,Stddev)	-999.99	-999.99	

<b>Scan Range-1876-2816; Pix Range-1869-2805</b>			
Number of GCPs	-999		
<b>Location Error(Km)</b>			
Along(Mean,Dir)	-999.99	NotAvail	
Across(Mean,Dir)	-999.99	NotAvail	
<b>Scale(Km)</b>			
Average Scale (Mean,%Variation)	-999.99	-999.9	
<b>Internal Distortion(Pixel)</b>			
Along(Mean,Stddev)	-999.99	-999.99	
Across(Mean,Stddev)	-999.99	-999.99	

\*-999 : no gcp available

\* -999.99 : values are not computed