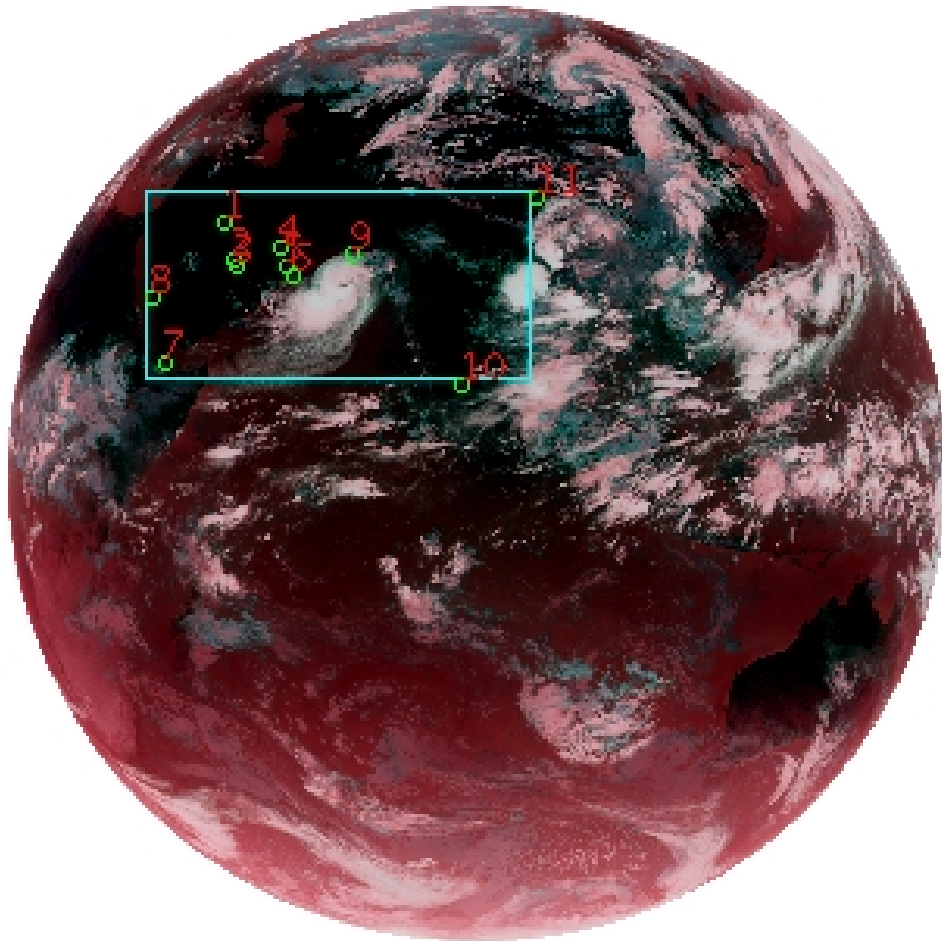


# DQE Report: Location Accuracy of INSAT-3D-IMG STANDARD(FULL DISK) Product 3DIMG\_15JUN2019\_0600

**Satellite** INSAT-3D      **No Of Bands** 6      **Product Type** STANDARD  
**Sensor** IMG      **LvlOfProcess** L1B      **Selected Band** 2-TIR1  
**DOP/Time** 15-06-19/06:00      **Station ID** BES      **Field View(deg)** 17.974  
**Res(Y,X) [Km]** (4.0,4.0)      **Res(Y,X) [uRad]** (112.0,112.0)

(81.042N,0.843W)

(81.042N,163.157E)



(-81.042S,0.843W)

(-81.042S,163.157E)

GCP Distribution overview for 3DIMG15JUN20190600L1BSTD

**Image Width:** 2805      **Image Height:** 2816      **No Of GCPs:** 11

**GCP Coverage(%)** 19.13      **(N-S)** 39.40      **(E-W)**

## Location Error(E)

**Legend**      — 0Km < E <= 50Km      — 50Km < E <= 100Km      — E >100Km

## Location Error (In IR Pixels)

	Mean	Direction	Stddev	RMS
Along	0.234	N	1.472	1.491
Across	-1.973	W	1.375	2.405

## Scale (Km)

	Pixel Size	Stddev	%variation
Average	4.881	0.512	22.037
Along	5.631	4.528	40.786
Across	5.089	0.828	27.213

## Internal Distortion (in IR Pixels)

	PeakToPeak	Mean	Stddev	RMS
Along	3.934	0.759	1.22	1.433
Across	3.221	0.127	1.20	1.202

## Attitude Residuals (Deg)

Pitch	Roll	Yaw
-0.01218	-0.00133	-0.00227

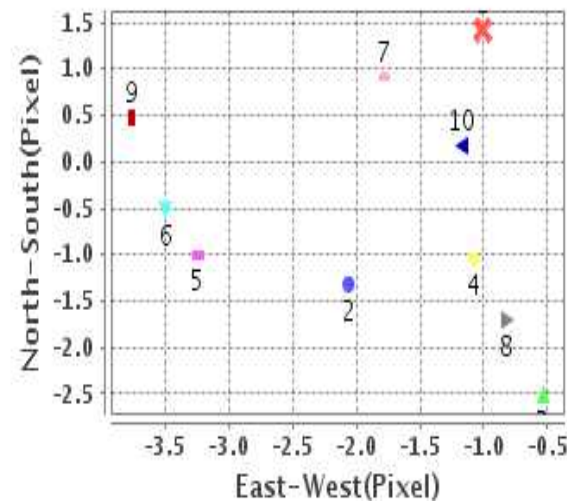
## Reference Used

Sensor	Resolution	Projection
ETM	500.00	GGP

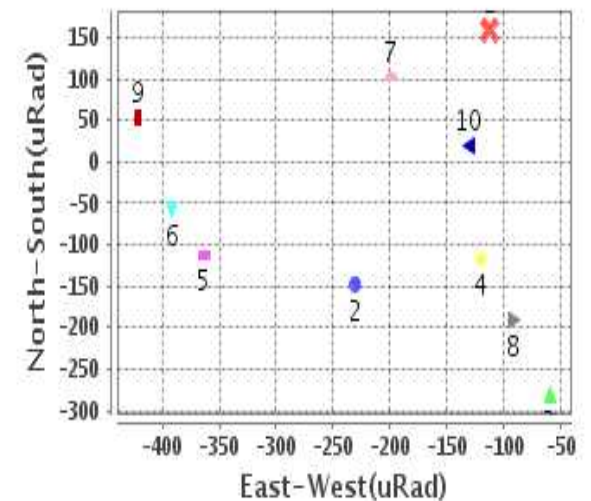
## Radial Error (in IR Pixels)

<b>Mean</b>	2.662
<b>Min</b>	1.036
<b>Max</b>	3.911
<b>CE90</b>	3.910

## Location Error For GCPs(Pixel)



## Location Error For GCPs(uRad)



## Detailed Product Information

### Ancillary Info

<b>Satellite</b>	INSAT-3D	<b>Generation Date</b>	15-06-19
<b>Sensor</b>	IMG	<b>DQE Date</b>	18-06-2019
<b>PassType</b>	NONE	<b>Aquisition Date</b>	15-06-19
<b>Imaging Mode</b>	FULL_FRAME	<b>Aquisition Time(GMT)</b>	06:00
<b>Sat Altitude(m)</b>	3.6E7	<b>Nominal Altitude(Km)</b>	3.6E7
<b>Station</b>	BES	<b>Predicted Altitude(Km)</b>	-999.99
<b>Sat Location(deg)</b>	-999.99 E	<b>Nominal Center Lat(deg)</b>	0.0
<b>Format</b>	hdf5-1.8.8	<b>Nominal Center Lon(deg)</b>	82.0
<b>LvlOfProcessing</b>	STANDARD(FULL	<b>Predicted Center Lat(deg)</b>	-999.99
<b>DP JobId</b>	3DIMG_15JUN20	<b>Predicted Center Lon(deg)</b>	-999.99
<b>ProductCode</b>	NONE		
<b>Field View(deg)</b>	17.974		

### Projection Parameters

<b>Projection</b>	None
<b>Ellipsoid</b>	WGS_84
<b>Datum</b>	WGS_84
<b>Zone</b>	NotAvail
<b>Semi_Major_Axis(Km)</b>	6378.14
<b>Semi_Minor_Axis(Km)</b>	6356.75
<b>Standard_Parallel1(deg)</b>	-999.99
<b>Standard_Parallel2(deg)</b>	-999.99
<b>Projection_Origin_Lon(deg)</b>	-999.99
<b>Projection_Origin_Lat(deg)</b>	-999.99
<b>Projection_False_Easting(Km)</b>	-999.99
<b>Projection_False_Northing(Km)</b>	-999.99

### Scene Center Desc

<b>Centre Lat(deg)</b>	0.0
<b>Center Lon(deg)</b>	82.0
<b>Centre Roll(deg)</b>	-999.0
<b>Centre Pitch(deg)</b>	-999.0
<b>Center Yaw(deg)</b>	-999.0
<b>SunElevation(deg)</b>	-999.99
<b>SunAzimuth(deg)</b>	-999.99
<b>SatElevation(deg)</b>	-999.99
<b>SatAzimuth(deg)</b>	-999.99

### Scene Corner Desc

<b>NW_Lat(deg)</b>	81.042
<b>NW_Lon(deg)</b>	0.843
<b>SW_Lat(deg)</b>	-81.042
<b>SW_Lon(deg)</b>	0.843
<b>NE_Lat(deg)</b>	81.042
<b>NE_Lon(deg)</b>	163.157
<b>SE_Lat(deg)</b>	-81.042
<b>SE_Lon(deg)</b>	163.157

### Band Wise Details

	Res_AL(Km)	Res_AX(Km)	Image Height	Image Width
<b>MIR</b>	4.0	4.0	2816	2805
<b>SWIR</b>	1.0	1.0	11264	11220
<b>TIR1</b>	4.0	4.0	2816	2805
<b>TIR2</b>	4.0	4.0	2816	2805
<b>VIS</b>	1.0	1.0	11264	11220
<b>WV</b>	8.0	8.0	1408	1402

## GDQE Computation Base

<b>Projection</b>	MER	<b>Wildpoint Rejection Threshold</b>	2.60	<b>SemiMajorAxis(m)</b>	6378137.00	<b>Mode Of Computation</b>	grid
<b>Ellipsoid</b>	WGS_84		-sigma	<b>SemiMinorAxis(m)</b>	6356752.31	<b>Used Reference Type</b>	REFINSREF
<b>Datum</b>	WGS_84	<b>Unit</b>	pixels	<b>Standardparallel1(deg)</b>	17.0		
<b>Zone</b>	Not Applicable			<b>Standardparallel2(deg)</b>	17.0		

\* -999.99 : Not Applicable/Not Available

## References

**JobId : 3DIMG15JUN20190600L1BSTD**

(-999.99 - Not Available/Not Computed)

Ref.No	Source	File Name	Resolution ( m )	Projection
1	ETM	world_Band1.img	500.0	GGP

## Location Accuracy

### GCP Distribution Statistics

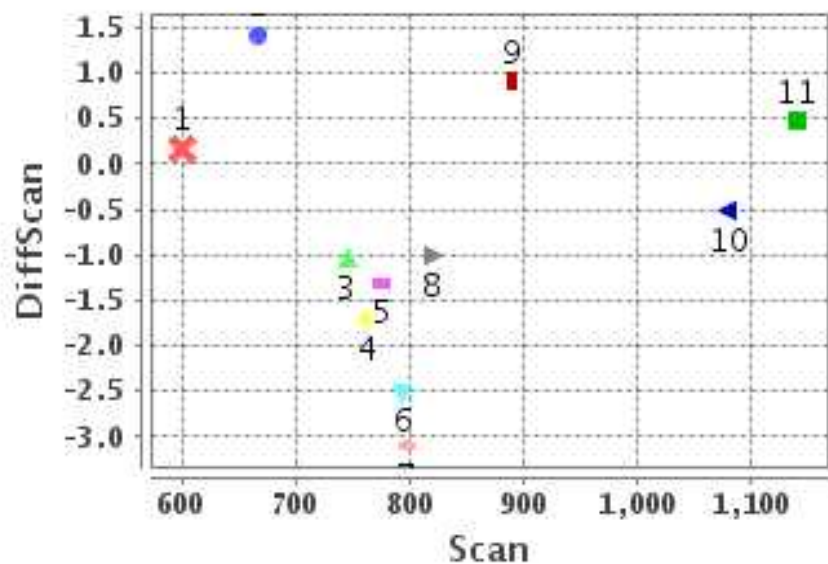
Image Width (pixels) : 2805      Image Height (pixels) : 2816      No of GCPs : 11

	Mean	StdDev	Min	Max	Coverage(in %)
<b>GCP Scan</b>	824.4	153.0	600.0	1138.75	19.13 (N-S)
<b>GCP Pix</b>	860.0	324.2	456.2	1561.50	39.40 (E-W)

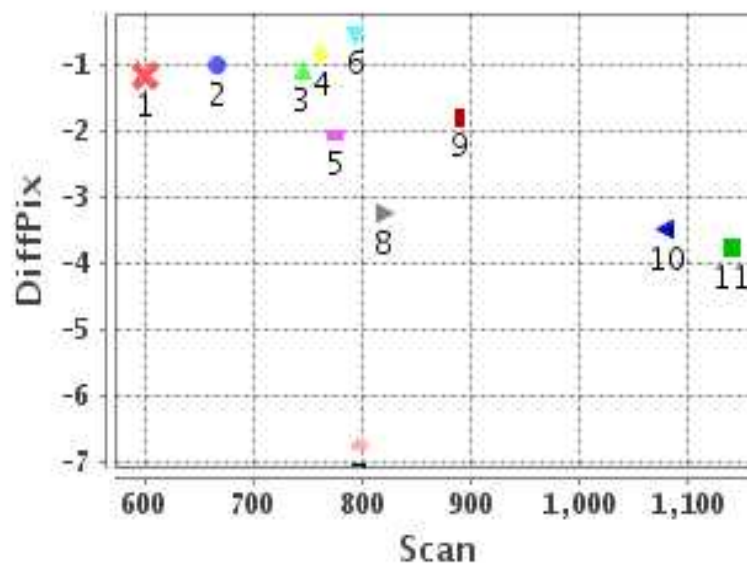
### Identified Control Point details : ( Differences are Reference - Product )

No	Scan	Pix	DiffScan (line)	DiffPix (pixel)	DifLat (Km)	Dir	DifLon (Km)	Dir	Status
1	667.2	664.5	1.4	-1.01	9.530	S	0.342	E	Accepted
2	775.5	685.2	-1.3	-2.06	4.554	N	10.918	W	Accepted
3	793.5	698.2	-2.5	-0.54	10.266	N	4.023	W	Accepted
4	745.2	823.2	-1.0	-1.08	4.501	N	4.971	W	Accepted
5	797.0	844.8	-3.1	-6.77	16.394	N	32.692	W	Rejected
6	820.2	863.2	-1.0	-3.25	3.892	N	14.755	W	Accepted
7	1079.2	487.8	-0.5	-3.50	1.554	N	15.567	W	Accepted
8	890.5	456.2	0.9	-1.78	6.055	S	7.825	W	Accepted
9	761.5	1027.5	-1.7	-0.82	6.356	N	2.428	W	Accepted
10	1138.8	1348.0	0.5	-3.76	4.604	S	14.946	W	Accepted
11	600.0	1561.5	0.2	-1.17	1.582	S	3.832	W	Accepted

### Error(Pixels) Vs. GCPScan



### Error(Pixels) Vs. GCPScan



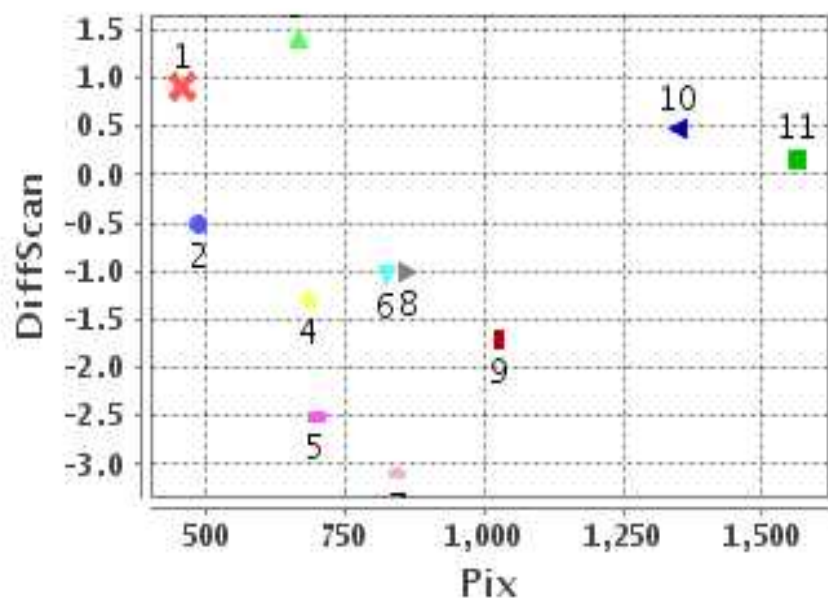
#### Number Of Points

North	6
South	4
East	1
West	9

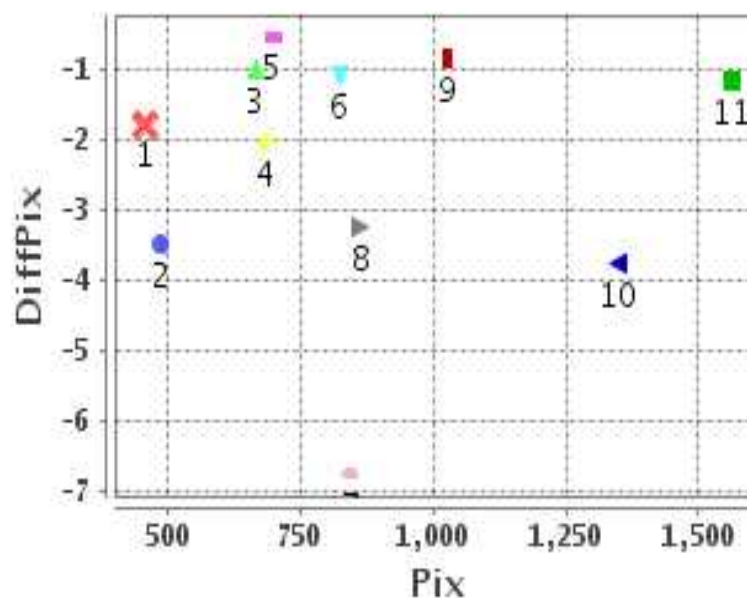
#### Radial Error ( Km )

Mean	2.662
Min	1.036
Max	3.911
CE90	3.910

### Error(Pixels) Vs. GCPPix



### Error(Pixels) Vs. GCPPix



#### Location Accuracy

	Mean	StdDev	RMS	Dir	* MinRMS	* MaxRMS
Along( Km )	0.234	1.472	1.491	N	1.318	1.566
Across ( Km )	-1.973	1.375	2.405	W	2.178	2.535

## Block-Wise Geo location Error Statistics

### Location Accuracy,Scale,ID

<b>Scan Range-0-937; Pix Range-0-934</b>		
Number of GCPs	6	
<b>Location Error(Km)</b>		
Along(Mean,Dir)	1.27167	N
Across(Mean,Dir)	-7.03	W
<b>Scale(Km)</b>		
Average Scale (Mean,%Variation)	5.38	34.50
<b>Internal Distortion(Pixel)</b>		
Along(Mean,Stddev)	2.42	1.10
Across(Mean,Stddev)	-0.20	0.97

<b>Scan Range-0-937; Pix Range-934-1869</b>		
Number of GCPs	2	
<b>Location Error(Km)</b>		
Along(Mean,Dir)	2.39	N
Across(Mean,Dir)	-3.13	W
<b>Scale(Km)</b>		
Average Scale (Mean,%Variation)	4.51	12.79
<b>Internal Distortion(Pixel)</b>		
Along(Mean,Stddev)	1.88	0.00
Across(Mean,Stddev)	0.35	0.00

<b>Scan Range-0-937; Pix Range-1869-2805</b>		
Number of GCPs	-999	
<b>Location Error(Km)</b>		
Along(Mean,Dir)	-999.99	NotAvail
Across(Mean,Dir)	-999.99	NotAvail
<b>Scale(Km)</b>		
Average Scale (Mean,%Variation)	-999.99	-999.9
<b>Internal Distortion(Pixel)</b>		
Along(Mean,Stddev)	-999.99	-999.99
Across(Mean,Stddev)	-999.99	-999.99

<b>Scan Range-937-1876; Pix Range-0-934</b>		
Number of GCPs	1	
<b>Location Error(Km)</b>		
Along(Mean,Dir)	1.55	N
Across(Mean,Dir)	-15.56	W
<b>Scale(Km)</b>		
Average Scale (Mean,%Variation)	-999.99	-999.9
<b>Internal Distortion(Pixel)</b>		
Along(Mean,Stddev)	-999.99	-999.99
Across(Mean,Stddev)	-999.99	-999.99

<b>Scan Range-937-1876; Pix Range-934-1869</b>		
Number of GCPs	1	
<b>Location Error(Km)</b>		
Along(Mean,Dir)	-4.61	S
Across(Mean,Dir)	-14.95	W
<b>Scale(Km)</b>		
Average Scale (Mean,%Variation)	-999.99	-999.9
<b>Internal Distortion(Pixel)</b>		
Along(Mean,Stddev)	-999.99	-999.99
Across(Mean,Stddev)	-999.99	-999.99

<b>Scan Range-937-1876; Pix Range-1869-2805</b>		
Number of GCPs	-999	
<b>Location Error(Km)</b>		
Along(Mean,Dir)	-999.99	NotAvail
Across(Mean,Dir)	-999.99	NotAvail
<b>Scale(Km)</b>		
Average Scale (Mean,%Variation)	-999.99	-999.9
<b>Internal Distortion(Pixel)</b>		
Along(Mean,Stddev)	-999.99	-999.99
Across(Mean,Stddev)	-999.99	-999.99

<b>Scan Range-1876-2816; Pix Range-0-934</b>		
Number of GCPs	-999	
<b>Location Error(Km)</b>		
Along(Mean,Dir)	-999.99	NotAvail
Across(Mean,Dir)	-999.99	NotAvail
<b>Scale(Km)</b>		
Average Scale (Mean,%Variation)	-999.99	-999.9
<b>Internal Distortion(Pixel)</b>		
Along(Mean,Stddev)	-999.99	-999.99
Across(Mean,Stddev)	-999.99	-999.99

<b>Scan Range-1876-2816; Pix Range-937-1869</b>		
Number of GCPs	-999	
<b>Location Error(Km)</b>		
Along(Mean,Dir)	-999.99	NotAvail
Across(Mean,Dir)	-999.99	NotAvail
<b>Scale(Km)</b>		
Average Scale (Mean,%Variation)	-999.99	-999.9
<b>Internal Distortion(Pixel)</b>		
Along(Mean,Stddev)	-999.99	-999.99
Across(Mean,Stddev)	-999.99	-999.99

<b>Scan Range-1876-2816; Pix Range-1869-2805</b>		
Number of GCPs	-999	
<b>Location Error(Km)</b>		
Along(Mean,Dir)	-999.99	NotAvail
Across(Mean,Dir)	-999.99	NotAvail
<b>Scale(Km)</b>		
Average Scale (Mean,%Variation)	-999.99	-999.9
<b>Internal Distortion(Pixel)</b>		
Along(Mean,Stddev)	-999.99	-999.99
Across(Mean,Stddev)	-999.99	-999.99

\*-999 : no gcp available

\* -999.99 : values are not computed