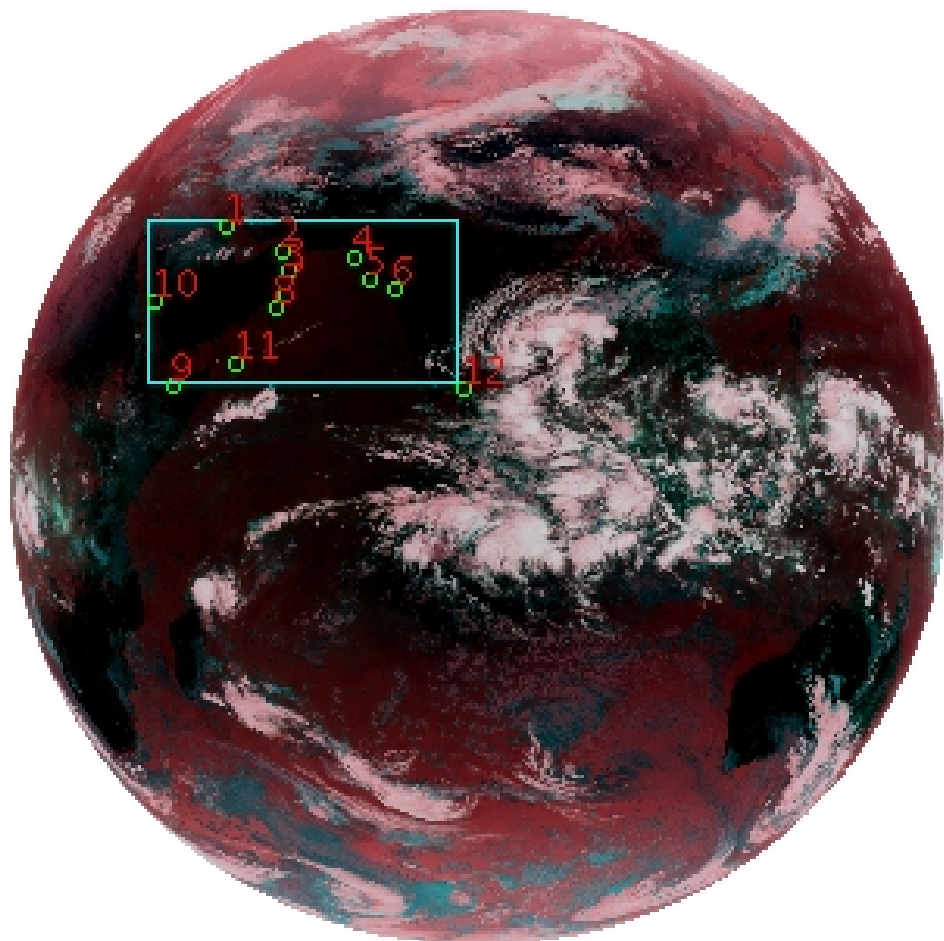


# DQE Report: Location Accuracy of INSAT-3D-IMG STANDARD(FULL DISK) Product 3DIMG\_12NOV2018\_0600

Satellite	INSAT-3D	No Of Bands	6	Product Type	STANDARD
Sensor	IMG	LvlOfProcess	L1B	Selected Band	2-TIR1
DOP/Time	12-11-18/06:00	Station ID	BES	Field View(deg)	17.974
Res(Y,X) [Km]	(4.0,4.0)	Res(Y,X) [uRad]	(112.0,112.0)		

(81.042N,0.843W)

(81.042N,163.157E)



(-81.042S,0.843W)

(-81.042S,163.157E)

GCP Distribution overview for 3DIMG12NOV20180600L1BSTD

Image Width: 2805 Image Height: 2816 No Of GCPs: 12

GCP Coverage(%) 16.77 (N-S) 31.72 (E-W)

## Location Error(E)

Legend — 0Km < E <= 50Km — 50Km < E <= 100Km — E >100Km

## Location Error (In IR Pixels)

	Mean	Direction	Stddev	RMS
Along	-0.392	S	1.713	1.758
Across	-3.154	W	1.633	3.551

## Scale (Km)

	Pixel Size	Stddev	%variation
Average	4.744	0.532	18.609
Along	5.206	3.557	30.160
Across	4.932	0.627	23.304

## Internal Distortion (in IR Pixels)

	PeakToPeak	Mean	Stddev	RMS
Along	3.683	2.948	1.25	3.202
Across	3.344	-0.191	1.08	1.096

## Attitude Residuals (Deg)

Pitch	Roll	Yaw
-0.02546	-0.00731	0.13876

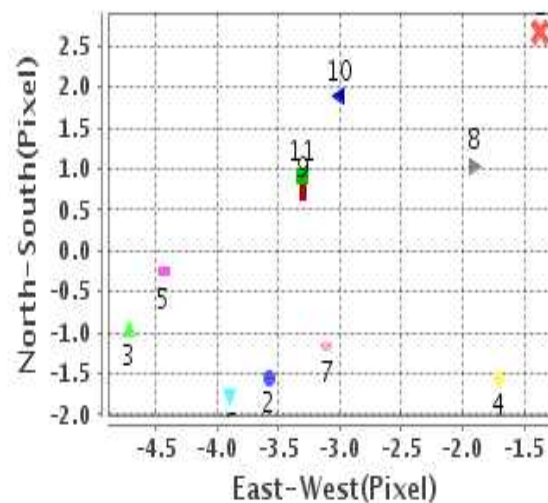
## Reference Used

Sensor	Resolution	Projection
ETM	500.00	GGP

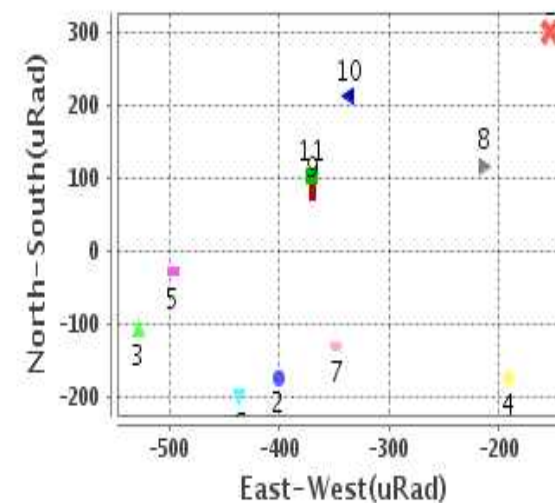
## Radial Error (in IR Pixels)

Mean	3.826
Min	2.310
Max	5.970
CE90	4.698

## Location Error For GCPs(Pixel)



## Location Error For GCPs(uRad)



## Detailed Product Information

### Ancillary Info

<b>Satellite</b>	INSAT-3D	<b>Generation Date</b>	12-11-18
<b>Sensor</b>	IMG	<b>DQE Date</b>	13-11-2018
<b>PassType</b>	NONE	<b>Aquisition Date</b>	12-11-18
<b>Imaging Mode</b>	FULL_FRAME	<b>Aquisition Time(GMT)</b>	06:00
<b>Sat Altitude(m)</b>	3.6E7	<b>Nominal Altitude(Km)</b>	3.6E7
<b>Station</b>	BES	<b>Predicted Altitude(Km)</b>	-999.99
<b>Sat Location(deg)</b>	-999.99 E	<b>Nominal Center Lat(deg)</b>	0.0
<b>Format</b>	hdf5-1.8.8	<b>Nominal Center Lon(deg)</b>	82.0
<b>LvlOfProcessing</b>	STANDARD(FULL)	<b>Predicted Center Lat(deg)</b>	-999.99
<b>DP JobId</b>	3DIMG_12NOV2	<b>Predicted Center Lon(deg)</b>	-999.99
<b>ProductCode</b>	NONE		
<b>Field View(deg)</b>	17.974		

### Projection Parameters

<b>Projection</b>	None
<b>Ellipsoid</b>	WGS_84
<b>Datum</b>	WGS_84
<b>Zone</b>	NotAvail
<b>Semi_Major_Axis(Km)</b>	6378.14
<b>Semi_Minor_Axis(Km)</b>	6356.75
<b>Standard_Parallel1(deg)</b>	-999.99
<b>Standard_Parallel2(deg)</b>	-999.99
<b>Projection_Origin_Lon(deg)</b>	-999.99
<b>Projection_Origin_Lat(deg)</b>	-999.99
<b>Projection_False_Easting(Km)</b>	-999.99
<b>Projection_False_Northing(Km)</b>	-999.99

### Scene Center Desc

<b>Centre Lat(deg)</b>	0.0
<b>Center Lon(deg)</b>	82.0
<b>Centre Roll(deg)</b>	-999.0
<b>Centre Pitch(deg)</b>	-999.0
<b>Center Yaw(deg)</b>	-999.0
<b>SunElevation(deg)</b>	-999.99
<b>SunAzimuth(deg)</b>	-999.99
<b>SatElevation(deg)</b>	-999.99
<b>SatAzimuth(deg)</b>	-999.99

### Scene Corner Desc

<b>NW_Lat(deg)</b>	81.042
<b>NW_Lon(deg)</b>	0.843
<b>SW_Lat(deg)</b>	-81.042
<b>SW_Lon(deg)</b>	0.843
<b>NE_Lat(deg)</b>	81.042
<b>NE_Lon(deg)</b>	163.157
<b>SE_Lat(deg)</b>	-81.042
<b>SE_Lon(deg)</b>	163.157

### Band Wise Details

	Res_AL(Km)	Res_AX(Km)	Image Height	Image Width
<b>MIR</b>	4.0	4.0	2816	2805
<b>SWIR</b>	1.0	1.0	11264	11220
<b>TIR1</b>	4.0	4.0	2816	2805
<b>TIR2</b>	4.0	4.0	2816	2805
<b>VIS</b>	1.0	1.0	11264	11220
<b>WV</b>	8.0	8.0	1408	1402

## GDQE Computation Base

<b>Projection</b>	MER	<b>Wildpoint Rejection Threshold</b>	2.60	<b>SemiMajorAxis(m)</b>	6378137.00	<b>Mode Of Computation</b>	grid
<b>Ellipsoid</b>	WGS_84		-sigma	<b>SemiMinorAxis(m)</b>	6356752.31	<b>Used Reference Type</b>	REFINSREF
<b>Datum</b>	WGS_84	<b>Unit</b>	pixels	<b>Standardparallel1(deg)</b>	17.0		
<b>Zone</b>	Not Applicable			<b>Standardparallel2(deg)</b>	17.0		

\* -999.99 : Not Applicable/Not Available

## References

**JobId : 3DIMG12NOV20180600L1BSTD**

(-999.99 - Not Available/Not Computed)

Ref.No	Source	File Name	Resolution ( m )	Projection
1	ETM	world_Band1.img	500.0	GGP

## Location Accuracy

### GCP Distribution Statistics

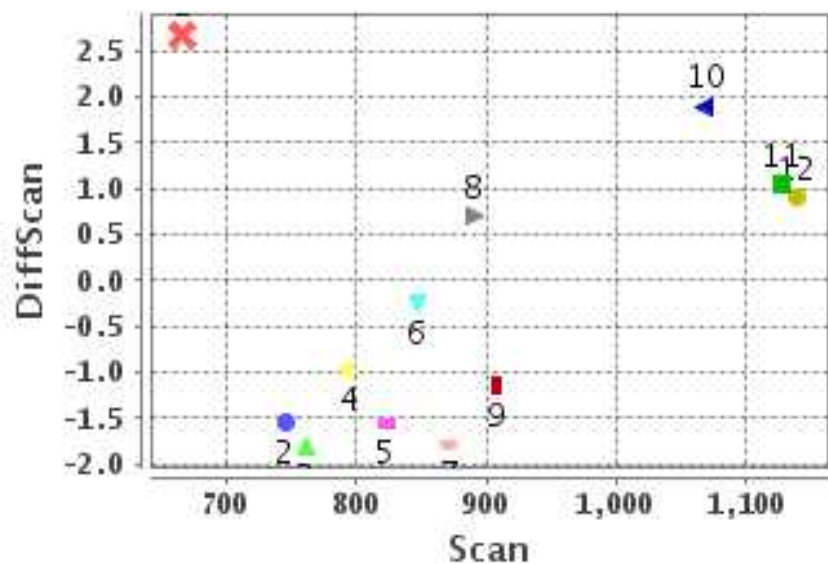
Image Width (pixels) : 2805      Image Height (pixels) : 2816      No of GCPs : 12

	Mean	StdDev	Min	Max	Coverage(in %)
<b>GCP Scan</b>	886.8	145.2	666.0	1138.25	16.77 (N-S)
<b>GCP Pix</b>	851.7	251.0	457.8	1347.50	31.72 (E-W)

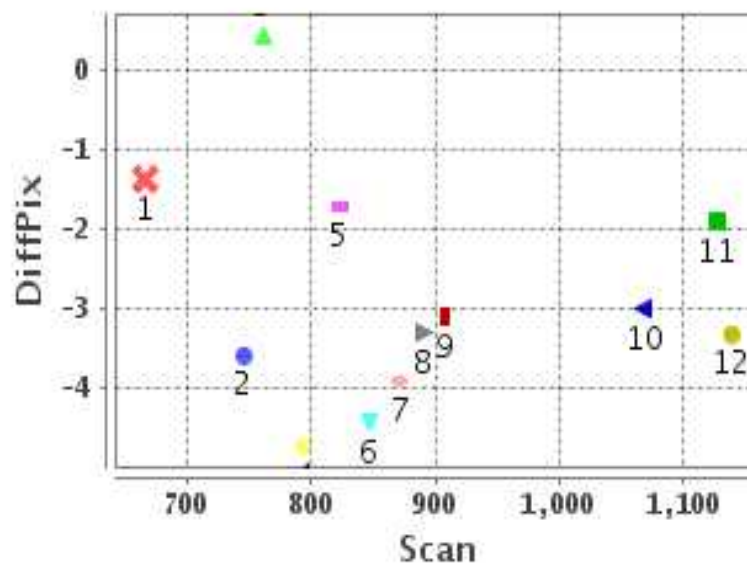
### Identified Control Point details : ( Differences are Reference - Product )

No	Scan	Pix	DiffScan (line)	DiffPix (pixel)	DifLat (Km)	Dir	DifLon (Km)	Dir	Status
1	666.0	664.8	2.7	-1.37	15.627	S	1.806	E	Accepted
2	745.8	825.8	-1.5	-3.58	4.501	N	15.620	W	Accepted
3	794.5	842.0	-1.0	-4.72	3.064	N	23.684	W	Accepted
4	761.5	1026.2	-1.8	0.44	6.842	N	1.831	E	Rejected
5	822.5	1075.2	-1.6	-1.71	5.550	N	7.416	W	Accepted
6	847.2	1150.0	-0.3	-4.44	0.016	N	18.900	W	Accepted
7	871.2	835.5	-1.8	-3.89	7.734	N	17.128	W	Accepted
8	908.5	803.2	-1.2	-3.11	2.943	N	14.391	W	Accepted
9	1126.5	505.5	1.0	-1.91	6.138	S	6.908	W	Accepted
10	890.8	457.8	0.7	-3.30	6.290	S	14.214	W	Accepted
11	1068.2	686.5	1.9	-3.01	8.614	S	11.394	W	Accepted
12	1138.2	1347.5	0.9	-3.31	4.380	S	10.908	W	Accepted

### Error(Pixels) Vs. GCPScan



### Error(Pixels) Vs. GCPScan



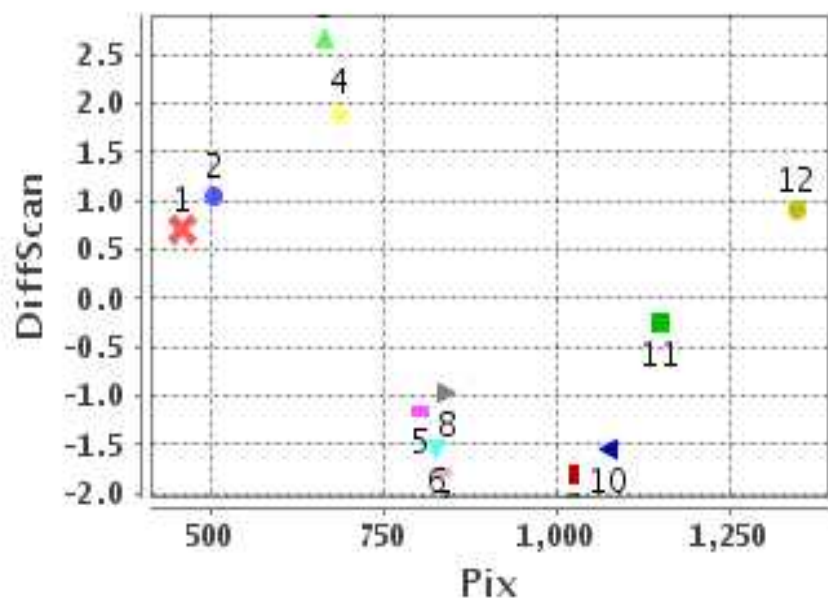
#### Number Of Points

North	6
South	5
East	1
West	10

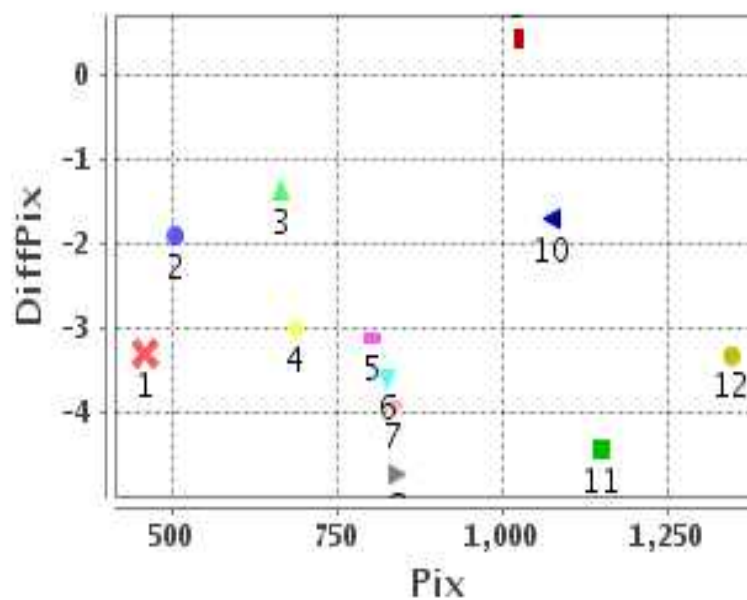
#### Radial Error ( Km )

Mean	3.826
Min	2.310
Max	5.970
CE90	4.698

### Error(Pixels) Vs. GCPPix



### Error(Pixels) Vs. GCPPix



#### Location Accuracy

	Mean	StdDev	RMS	Dir	* MinRMS	* MaxRMS
Along( Km )	-0.392	1.713	1.758	S	1.368	1.843
Across ( Km )	-3.154	1.633	3.551	W	3.220	3.722

## Block-Wise Geo location Error Statistics

### Location Accuracy,Scale,ID

<b>Scan Range-0-937; Pix Range-0-934</b>		
Number of GCPs	6	
<b>Location Error(Km)</b>		
Along(Mean,Dir)	-0.615	S
Across(Mean,Dir)	-13.87	W
<b>Scale(Km)</b>		
Average Scale (Mean,%Variation)	5.20	30.08
<b>Internal Distortion(Pixel)</b>		
Along(Mean,Stddev)	3.63	0.88
Across(Mean,Stddev)	0.04	1.11

<b>Scan Range-0-937; Pix Range-934-1869</b>		
Number of GCPs	2	
<b>Location Error(Km)</b>		
Along(Mean,Dir)	2.78	N
Across(Mean,Dir)	-13.16	W
<b>Scale(Km)</b>		
Average Scale (Mean,%Variation)	4.39	9.76
<b>Internal Distortion(Pixel)</b>		
Along(Mean,Stddev)	-1.30	0.00
Across(Mean,Stddev)	2.73	0.00

<b>Scan Range-0-937; Pix Range-1869-2805</b>		
Number of GCPs	-999	
<b>Location Error(Km)</b>		
Along(Mean,Dir)	-999.99	NotAvail
Across(Mean,Dir)	-999.99	NotAvail
<b>Scale(Km)</b>		
Average Scale (Mean,%Variation)	-999.99	-999.9
<b>Internal Distortion(Pixel)</b>		
Along(Mean,Stddev)	-999.99	-999.99
Across(Mean,Stddev)	-999.99	-999.99

<b>Scan Range-937-1876; Pix Range-0-934</b>		
Number of GCPs	2	
<b>Location Error(Km)</b>		
Along(Mean,Dir)	-7.375	S
Across(Mean,Dir)	-9.16	W
<b>Scale(Km)</b>		
Average Scale (Mean,%Variation)	4.82	20.41
<b>Internal Distortion(Pixel)</b>		
Along(Mean,Stddev)	0.86	0.00
Across(Mean,Stddev)	1.10	0.00

<b>Scan Range-937-1876; Pix Range-934-1869</b>		
Number of GCPs	1	
<b>Location Error(Km)</b>		
Along(Mean,Dir)	-4.38	S
Across(Mean,Dir)	-10.91	W
<b>Scale(Km)</b>		
Average Scale (Mean,%Variation)	-999.99	-999.9
<b>Internal Distortion(Pixel)</b>		
Along(Mean,Stddev)	-999.99	-999.99
Across(Mean,Stddev)	-999.99	-999.99

<b>Scan Range-937-1876; Pix Range-1869-2805</b>		
Number of GCPs	-999	
<b>Location Error(Km)</b>		
Along(Mean,Dir)	-999.99	NotAvail
Across(Mean,Dir)	-999.99	NotAvail
<b>Scale(Km)</b>		
Average Scale (Mean,%Variation)	-999.99	-999.9
<b>Internal Distortion(Pixel)</b>		
Along(Mean,Stddev)	-999.99	-999.99
Across(Mean,Stddev)	-999.99	-999.99

<b>Scan Range-1876-2816; Pix Range-0-934</b>		
Number of GCPs	-999	
<b>Location Error(Km)</b>		
Along(Mean,Dir)	-999.99	NotAvail
Across(Mean,Dir)	-999.99	NotAvail
<b>Scale(Km)</b>		
Average Scale (Mean,%Variation)	-999.99	-999.9
<b>Internal Distortion(Pixel)</b>		
Along(Mean,Stddev)	-999.99	-999.99
Across(Mean,Stddev)	-999.99	-999.99

<b>Scan Range-1876-2816; Pix Range-937-1869</b>		
Number of GCPs	-999	
<b>Location Error(Km)</b>		
Along(Mean,Dir)	-999.99	NotAvail
Across(Mean,Dir)	-999.99	NotAvail
<b>Scale(Km)</b>		
Average Scale (Mean,%Variation)	-999.99	-999.9
<b>Internal Distortion(Pixel)</b>		
Along(Mean,Stddev)	-999.99	-999.99
Across(Mean,Stddev)	-999.99	-999.99

<b>Scan Range-1876-2816; Pix Range-1869-2805</b>		
Number of GCPs	-999	
<b>Location Error(Km)</b>		
Along(Mean,Dir)	-999.99	NotAvail
Across(Mean,Dir)	-999.99	NotAvail
<b>Scale(Km)</b>		
Average Scale (Mean,%Variation)	-999.99	-999.9
<b>Internal Distortion(Pixel)</b>		
Along(Mean,Stddev)	-999.99	-999.99
Across(Mean,Stddev)	-999.99	-999.99

\*-999 : no gcp available

\* -999.99 : values are not computed