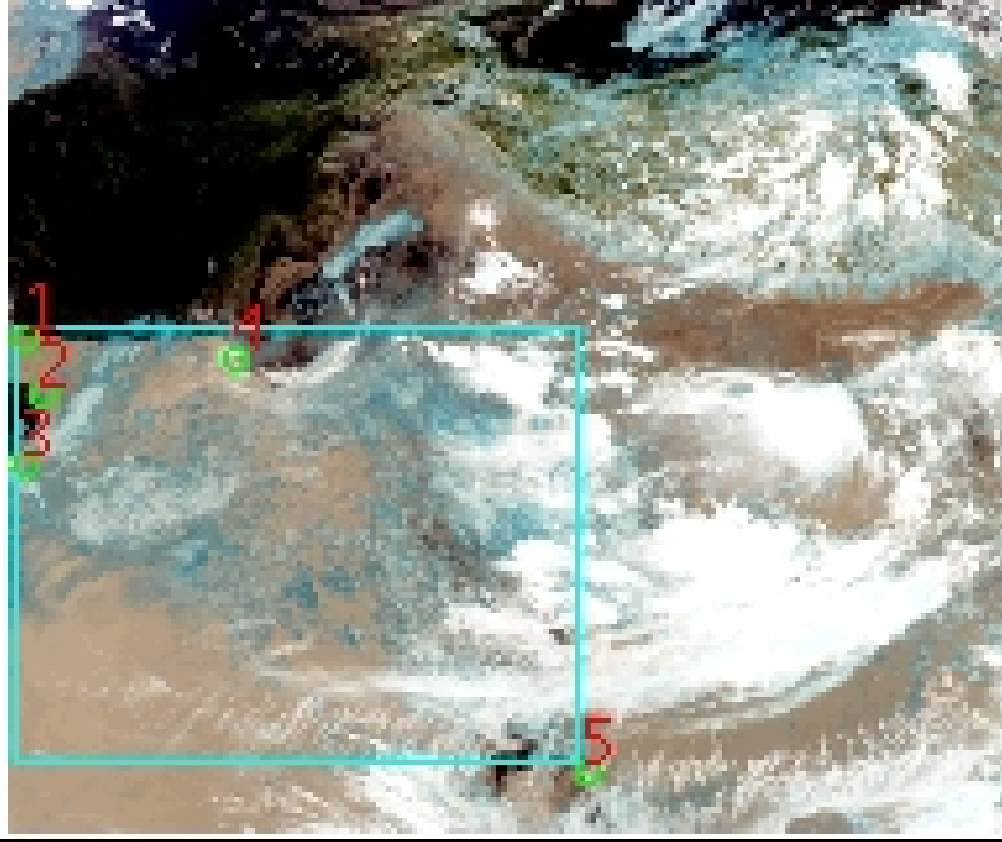


DQE Report: Location Accuracy of INSAT-3D-SND STANDARD Product 3DSND_19AUG2018_0600

Satellite	INSAT-3D	No Of Bands	19	Product Type	STANDARD
Sensor	SND	LvlOfProcess	L1B	Selected Band	2-LWIR3
DOP/Time	19-08-18/06:00	Station ID	BES	Field View(deg)	6.136
Res(Y,X) [Km]	(10.0,10.0)	Res(Y,X) [uRad]	(280.0,280.0)		

(41.426N,49.971W)

(41.426N,100.626E)



(6.823S,49.971W)

(6.823S,100.626E)

GCP Distribution overview for 3DSND19AUG20180600L1BSA1

Image Width: 384 **Image Height:** 320 **No Of GCPs:** 5

GCP Coverage(%) 51.88 **(N-S)** 56.12 **(E-W)**

Location Error(E)

Legend — 0Km < E <= 50Km — 50Km < E <= 100Km — E >100Km

Location Error (In IR Pixels)

	Mean	Direction	Stddev	RMS
Along	-1.790	S	2.250	2.875
Across	-2.127	W	1.243	2.463

Scale (Km)

	Pixel Size	Stddev	%variation
Average	11.920	1.070	19.205
Along	13.409	0.074	34.093
Across	12.774	0.796	27.745

Internal Distortion (in IR Pixels)

	PeakToPeak	Mean	Stddev	RMS
Along	6.115	-0.569	2.32	2.385
Across	3.172	0.928	1.24	1.547

Attitude Residuals (Deg)

Pitch	Roll	Yaw
-0.01853	0.01716	0.35023

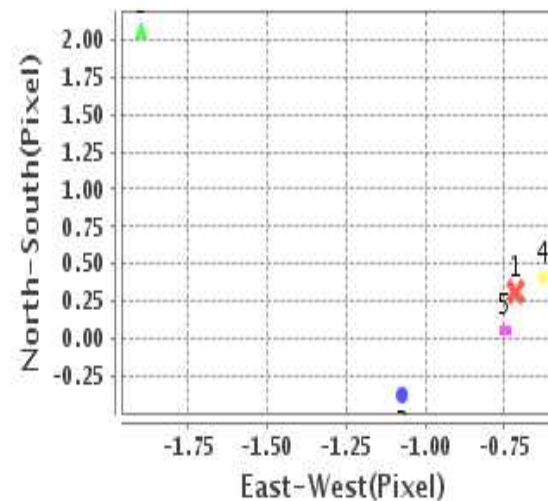
Reference Used

Sensor	Resolution	Projection
ETM	500.00	GGP

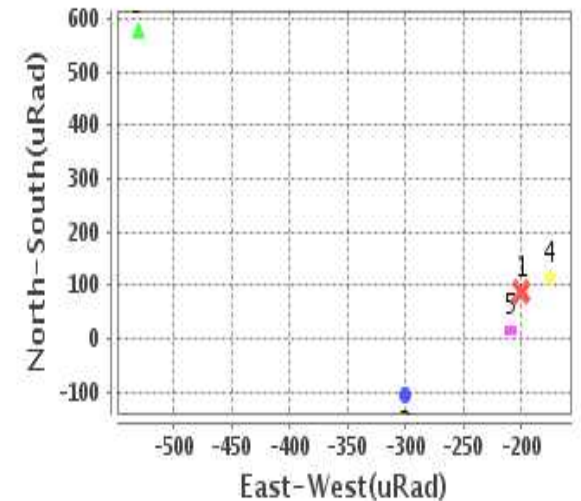
Radial Error (in IR Pixels)

Mean	3.175
Min	1.242
Max	7.083
CE90	3.280

Location Error For GCPs(Pixel)



Location Error For GCPs(uRad)



Detailed Product Information

Ancillary Info

Satellite	INSAT-3D	Generation Date	19-08-18
Sensor	SND	DQE Date	23-08-2018
PassType	NONE	Aquisition Date	19-08-18
Imaging Mode	FULL_FRAME	Aquisition Time(GMT)	06:00
Sat Altitude(m)	3.6E7	Nominal Altitude(Km)	3.6E7
Station	BES	Predicted Altitude(Km)	-999.99
Sat Location(deg)	-999.99 E	Nominal Center Lat(deg)	0.0
Format	hdf5-1.8.8	Nominal Center Lon(deg)	82.0
LvlOfProcessing	STANDARD	Predicted Center Lat(deg)	-999.99
DP JobId	3DSND_19AUG2	Predicted Center Lon(deg)	-999.99
ProductCode	NONE		
Field View(deg)	6.136		

Projection Parameters

Projection	None
Ellipsoid	WGS_84
Datum	WGS_84
Zone	NotAvail
Semi_Major_Axis(Km)	6378.14
Semi_Minor_Axis(Km)	6356.75
Standard_Parallel1(deg)	-999.99
Standard_Parallel2(deg)	-999.99
Projection_Origin_Lon(deg)	-999.99
Projection_Origin_Lat(deg)	-999.99
Projection_False_Easting(Km)	-999.99
Projection_False_Northing(Km)	-999.99

Scene Center Desc

Centre Lat(deg)	24.125
Center Lon(deg)	75.298
Centre Roll(deg)	-999.0
Centre Pitch(deg)	-999.0
Center Yaw(deg)	-999.0
SunElevation(deg)	-999.99
SunAzimuth(deg)	-999.99
SatElevation(deg)	-999.99
SatAzimuth(deg)	-999.99

Scene Corner Desc

NW_Lat(deg)	41.426
NW_Lon(deg)	49.971
SW_Lat(deg)	6.823
SW_Lon(deg)	49.971
NE_Lat(deg)	41.426
NE_Lon(deg)	100.626
SE_Lat(deg)	6.823
SE_Lon(deg)	100.626

Band Wise Details

	Res_AL(Km)	Res_AX(Km)	Image Height	Image Width
LWIR1	10.0	10.0	320	384
LWIR2	10.0	10.0	320	384
LWIR3	10.0	10.0	320	384
LWIR4	10.0	10.0	320	384
LWIR5	10.0	10.0	320	384
LWIR6	10.0	10.0	320	384

GDQE Computation Base

Projection	MER	Wildpoint Rejection Threshold	2.60	SemiMajorAxis(m)	6378137.00	Mode Of Computation	grid
Ellipsoid	WGS_84		-sigma	SemiMinorAxis(m)	6356752.31	Used Reference Type	REFINSREF
Datum	WGS_84	Unit	pixels	Standardparallel1(deg)	17.0		
Zone	Not Applicable			Standardparallel2(deg)	17.0		

* -999.99 : Not Applicable/Not Available

References

JobId : 3DSND19AUG20180600L1BSA1

(-999.99 - Not Available/Not Computed)

Ref.No	Source	File Name	Resolution (m)	Projection
1	ETM	world_Band1.img	500.0	GGP

Location Accuracy

GCP Distribution Statistics

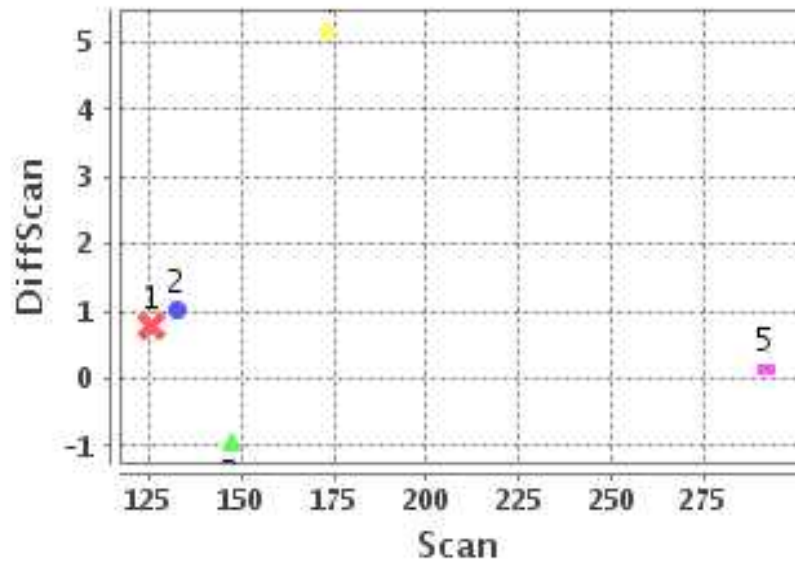
Image Width (pixels) : 384 Image Height (pixels) : 320 No of GCPs : 5

	Mean	StdDev	Min	Max	Coverage(in %)
GCP Scan	174.0	61.0	125.5	291.50	51.88 (N-S)
GCP Pix	67.3	83.1	6.2	221.75	56.12 (E-W)

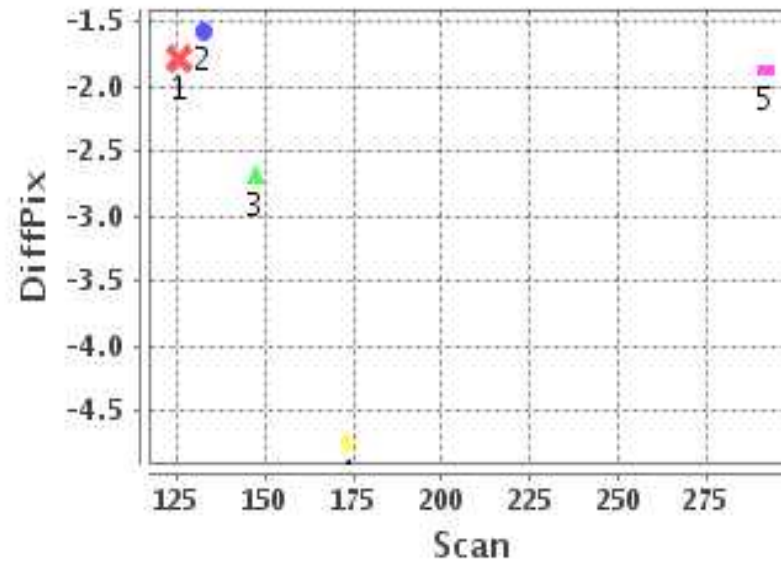
Identified Control Point details : (Differences are Reference - Product)

No	Scan	Pix	DiffScan (line)	DiffPix (pixel)	DifLat (Km)	Dir	DifLon (Km)	Dir	Status
1	125.5	6.2	0.8	-1.79	15.991	S	16.907	W	Accepted
2	147.2	13.2	-0.9	-2.68	9.465	N	31.405	W	Accepted
3	173.0	7.5	5.2	-4.74	58.514	S	39.920	W	Accepted
4	132.5	87.8	1.0	-1.57	17.916	S	7.531	W	Accepted
5	291.5	221.8	0.1	-1.87	6.522	S	10.573	W	Accepted

Error(Pixels) Vs. GCPScan



Error(Pixels) Vs. GCPScan



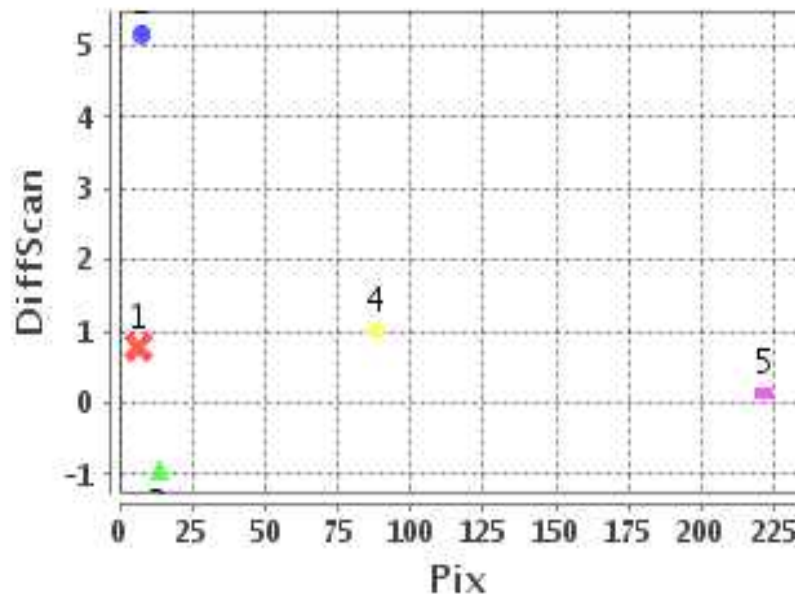
Number Of Points

North	1
South	4
East	0
West	5

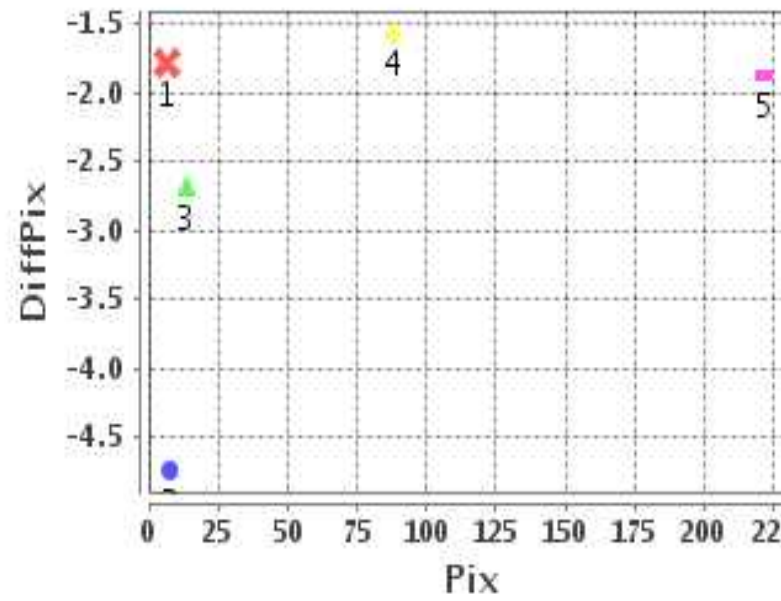
Radial Error (Km)

Mean	3.175
Min	1.242
Max	7.083
CE90	3.280

Error(Pixels) Vs. GCPPix



Error(Pixels) Vs. GCPPix



Location Accuracy

	Mean	StdDev	RMS	Dir	* MinRMS	* MaxRMS
Along(Km)	-1.790	2.250	2.875	S	1.331	3.198
Across (Km)	-2.127	1.243	2.463	W	1.898	2.728

Block-Wise Geo location Error Statistics

Location Accuracy,Scale,ID

Scan Range-0-105; Pix Range-0-127		
Number of GCPs	-999	
Location Error(Km)		
Along(Mean,Dir)	-999.99	NotAvail
Across(Mean,Dir)	-999.99	NotAvail
Scale(Km)		
Average Scale (Mean,%Variation)	-999.99	-999.9
Internal Distortion(Pixel)		
Along(Mean,Stddev)	-999.99	-999.99
Across(Mean,Stddev)	-999.99	-999.99

Scan Range-0-105; Pix Range-127-255		
Number of GCPs	-999	
Location Error(Km)		
Along(Mean,Dir)	-999.99	NotAvail
Across(Mean,Dir)	-999.99	NotAvail
Scale(Km)		
Average Scale (Mean,%Variation)	-999.99	-999.9
Internal Distortion(Pixel)		
Along(Mean,Stddev)	-999.99	-999.99
Across(Mean,Stddev)	-999.99	-999.99

Scan Range-0-105; Pix Range-255-384		
Number of GCPs	-999	
Location Error(Km)		
Along(Mean,Dir)	-999.99	NotAvail
Across(Mean,Dir)	-999.99	NotAvail
Scale(Km)		
Average Scale (Mean,%Variation)	-999.99	-999.9
Internal Distortion(Pixel)		
Along(Mean,Stddev)	-999.99	-999.99
Across(Mean,Stddev)	-999.99	-999.99

Scan Range-105-212; Pix Range-0-127		
Number of GCPs	4	
Location Error(Km)		
Along(Mean,Dir)	-20.74	S
Across(Mean,Dir)	-23.94	W
Scale(Km)		
Average Scale (Mean,%Variation)	12.49	24.93
Internal Distortion(Pixel)		
Along(Mean,Stddev)	-0.97	2.55
Across(Mean,Stddev)	1.21	1.31

Scan Range-105-212; Pix Range-127-255		
Number of GCPs	-999	
Location Error(Km)		
Along(Mean,Dir)	-999.99	NotAvail
Across(Mean,Dir)	-999.99	NotAvail
Scale(Km)		
Average Scale (Mean,%Variation)	-999.99	-999.9
Internal Distortion(Pixel)		
Along(Mean,Stddev)	-999.99	-999.99
Across(Mean,Stddev)	-999.99	-999.99

Scan Range-105-212; Pix Range-255-384		
Number of GCPs	-999	
Location Error(Km)		
Along(Mean,Dir)	-999.99	NotAvail
Across(Mean,Dir)	-999.99	NotAvail
Scale(Km)		
Average Scale (Mean,%Variation)	-999.99	-999.9
Internal Distortion(Pixel)		
Along(Mean,Stddev)	-999.99	-999.99
Across(Mean,Stddev)	-999.99	-999.99

Scan Range-212-320; Pix Range-0-127		
Number of GCPs	-999	
Location Error(Km)		
Along(Mean,Dir)	-999.99	NotAvail
Across(Mean,Dir)	-999.99	NotAvail
Scale(Km)		
Average Scale (Mean,%Variation)	-999.99	-999.9
Internal Distortion(Pixel)		
Along(Mean,Stddev)	-999.99	-999.99
Across(Mean,Stddev)	-999.99	-999.99

Scan Range-212-320; Pix Range-105-255		
Number of GCPs	1	
Location Error(Km)		
Along(Mean,Dir)	-6.53	S
Across(Mean,Dir)	-10.57	W
Scale(Km)		
Average Scale (Mean,%Variation)	-999.99	-999.9
Internal Distortion(Pixel)		
Along(Mean,Stddev)	-999.99	-999.99
Across(Mean,Stddev)	-999.99	-999.99

Scan Range-212-320; Pix Range-255-384		
Number of GCPs	-999	
Location Error(Km)		
Along(Mean,Dir)	-999.99	NotAvail
Across(Mean,Dir)	-999.99	NotAvail
Scale(Km)		
Average Scale (Mean,%Variation)	-999.99	-999.9
Internal Distortion(Pixel)		
Along(Mean,Stddev)	-999.99	-999.99
Across(Mean,Stddev)	-999.99	-999.99

*-999 : no gcp available

* -999.99 : values are not computed