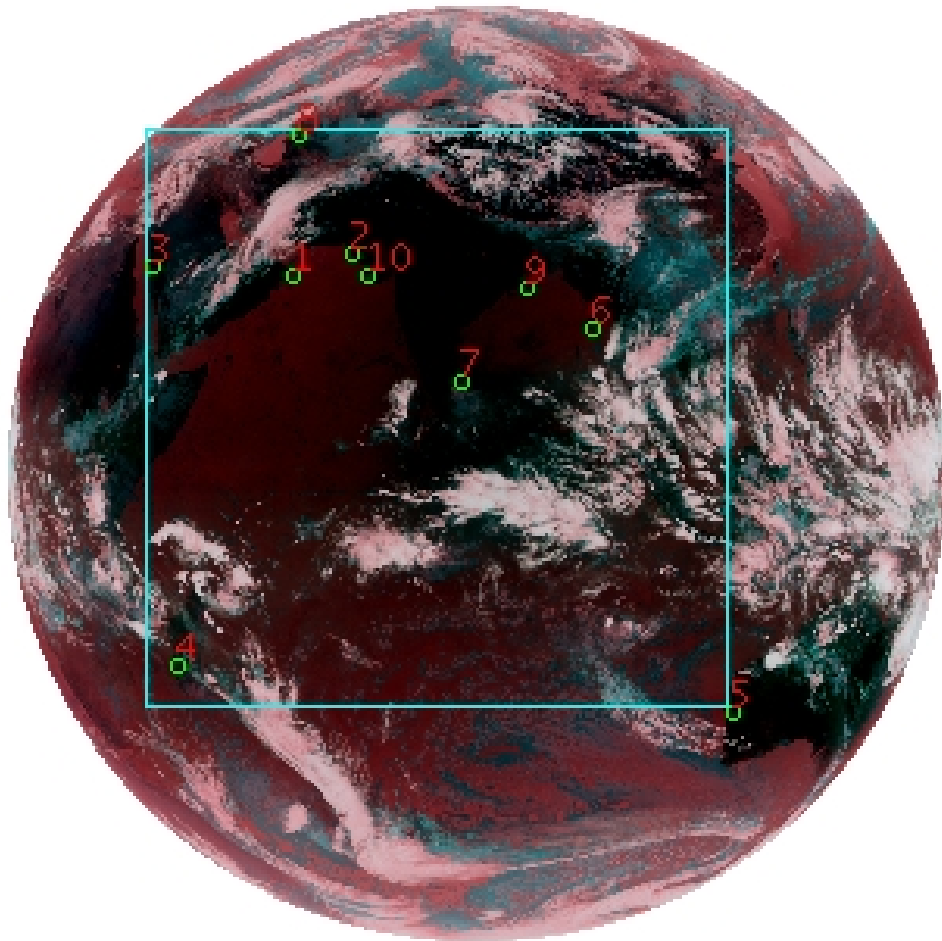


# DQE Report: Location Accuracy of INSAT-3D-IMG STANDARD(FULL DISK) Product 3DIMG\_27MAR2017\_0600

**Satellite** INSAT-3D      **No Of Bands** 6      **Product Type** STANDARD  
**Sensor** IMG      **LvlOfProcess** L1B      **Selected Band** 2-TIR1  
**DOP/Time** 27-03-17/06:00      **Station ID** BES      **Field View(deg)** 17.974  
**Res(Y,X) [Km]** (4.0,4.0)      **Res(Y,X) [uRad]** (112.0,112.0)

(81.042N,0.843W)

(81.042N,163.157E)



(-81.042S,0.843W)

(-81.042S,163.157E)

GCP Distribution overview for 3DIMG27MAR20170600L1BSTD

**Image Width:** 2805      **Image Height:** 2816      **No Of GCPs:** 10

**GCP Coverage(%)**      59.22      **(N-S)** 59.68      **(E-W)**

## Location Error(E)

**Legend**      — 0Km < E <= 50Km      — 50Km < E <= 100Km      — E >100Km

## Location Error (In IR Pixels)

	Mean	Direction	Stddev	RMS
Along	1.068	N	1.185	1.595
Across	-2.347	W	3.248	4.007

## Scale (Km)

	Pixel Size	Stddev	%variation
Average	4.724	0.637	18.103
Along	7.653	17.827	91.326
Across	4.920	1.220	22.992

## Internal Distortion (in IR Pixels)

	PeakToPeak	Mean	Stddev	RMS
Along	2.667	-0.221	0.94	0.965
Across	6.564	-2.070	2.17	3.002

## Attitude Residuals (Deg)

Pitch	Roll	Yaw
-0.01299	-0.00940	0.07780

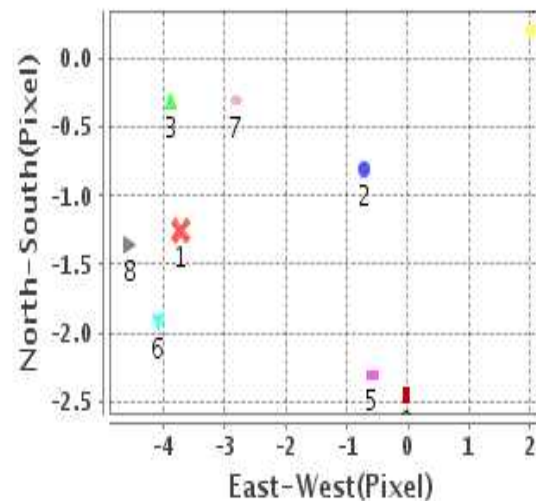
## Reference Used

Sensor	Resolution	Projection
ETM	500.00	GGP

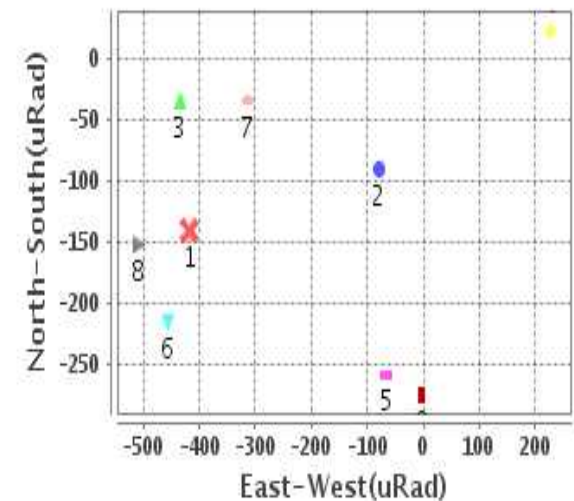
## Radial Error (in IR Pixels)

<b>Mean</b>	3.791
<b>Min</b>	.591
<b>Max</b>	7.528
<b>CE90</b>	6.473

## Location Error For GCPs(Pixel)



## Location Error For GCPs(uRad)



## Detailed Product Information

### Ancillary Info

<b>Satellite</b>	INSAT-3D	<b>Generation Date</b>	27-03-17
<b>Sensor</b>	IMG	<b>DQE Date</b>	31-03-2017
<b>PassType</b>	NONE	<b>Aquisition Date</b>	27-03-17
<b>Imaging Mode</b>	FULL_FRAME	<b>Aquisition Time(GMT)</b>	06:00
<b>Sat Altitude(m)</b>	3.6E7	<b>Nominal Altitude(Km)</b>	3.6E7
<b>Station</b>	BES	<b>Predicted Altitude(Km)</b>	-999.99
<b>Sat Location(deg)</b>	-999.99 E	<b>Nominal Center Lat(deg)</b>	0.0
<b>Format</b>	hdf5-1.8.8	<b>Nominal Center Lon(deg)</b>	82.0
<b>LvlOfProcessing</b>	STANDARD(FULL)	<b>Predicted Center Lat(deg)</b>	-999.99
<b>DP JobId</b>	3DIMG_27MAR2	<b>Predicted Center Lon(deg)</b>	-999.99
<b>ProductCode</b>	NONE		
<b>Field View(deg)</b>	17.974		

### Projection Parameters

<b>Projection</b>	None
<b>Ellipsoid</b>	WGS_84
<b>Datum</b>	WGS_84
<b>Zone</b>	NotAvail
<b>Semi_Major_Axis(Km)</b>	6378.14
<b>Semi_Minor_Axis(Km)</b>	6356.75
<b>Standard_Parallel1(deg)</b>	-999.99
<b>Standard_Parallel2(deg)</b>	-999.99
<b>Projection_Origin_Lon(deg)</b>	-999.99
<b>Projection_Origin_Lat(deg)</b>	-999.99
<b>Projection_False_Easting(Km)</b>	-999.99
<b>Projection_False_Northing(Km)</b>	-999.99

### Scene Center Desc

<b>Centre Lat(deg)</b>	0.0
<b>Center Lon(deg)</b>	82.0
<b>Centre Roll(deg)</b>	-999.0
<b>Centre Pitch(deg)</b>	-999.0
<b>Center Yaw(deg)</b>	-999.0
<b>SunElevation(deg)</b>	-999.99
<b>SunAzimuth(deg)</b>	-999.99
<b>SatElevation(deg)</b>	-999.99
<b>SatAzimuth(deg)</b>	-999.99

### Scene Corner Desc

<b>NW_Lat(deg)</b>	81.042
<b>NW_Lon(deg)</b>	0.843
<b>SW_Lat(deg)</b>	-81.042
<b>SW_Lon(deg)</b>	0.843
<b>NE_Lat(deg)</b>	81.042
<b>NE_Lon(deg)</b>	163.157
<b>SE_Lat(deg)</b>	-81.042
<b>SE_Lon(deg)</b>	163.157

### Band Wise Details

	Res_AL(Km)	Res_AX(Km)	Image Height	Image Width
<b>MIR</b>	4.0	4.0	2816	2805
<b>SWIR</b>	1.0	1.0	11264	11220
<b>TIR1</b>	4.0	4.0	2816	2805
<b>TIR2</b>	4.0	4.0	2816	2805
<b>VIS</b>	1.0	1.0	11264	11220
<b>WV</b>	8.0	8.0	1408	1402

## GDQE Computation Base

<b>Projection</b>	MER	<b>Wildpoint Rejection Threshold</b>	2.60	<b>SemiMajorAxis(m)</b>	6378137.00	<b>Mode Of Computation</b>	grid
<b>Ellipsoid</b>	WGS_84		-sigma	<b>SemiMinorAxis(m)</b>	6356752.31	<b>Used Reference Type</b>	REFINSREF
<b>Datum</b>	WGS_84	<b>Unit</b>	pixels	<b>Standardparallel1(deg)</b>	17.0		
<b>Zone</b>	Not Applicable			<b>Standardparallel2(deg)</b>	17.0		

\* -999.99 : Not Applicable/Not Available

## References

**JobId : 3DIMG27MAR20170600L1BSTD**

(-999.99 - Not Available/Not Computed)

Ref.No	Source	File Name	Resolution ( m )	Projection
1	ETM	world_Band1.img	500.0	GGP

## Location Accuracy

### GCP Distribution Statistics

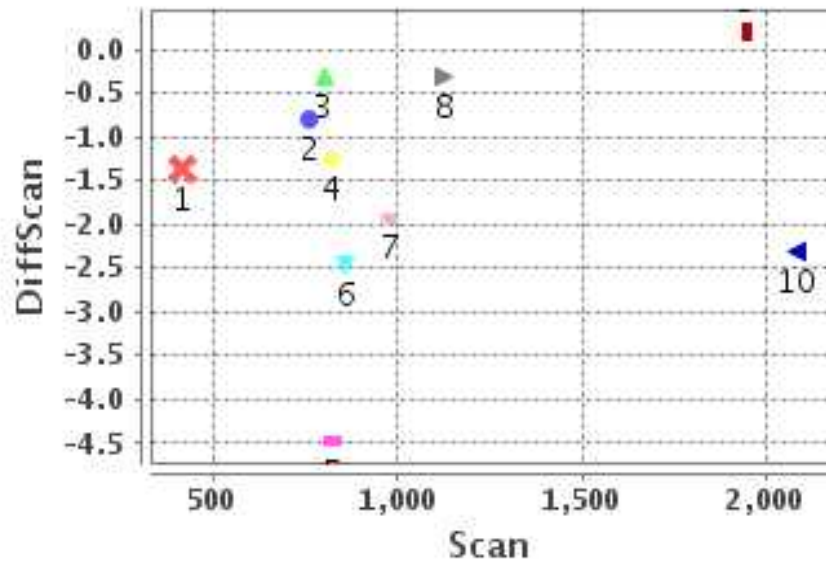
Image Width (pixels) : 2805      Image Height (pixels) : 2816      No of GCPs : 10

	Mean	StdDev	Min	Max	Coverage(in %)
<b>GCP Scan</b>	1062.2	507.7	414.8	2082.50	59.22 (N-S)
<b>GCP Pix</b>	1154.8	501.6	451.2	2125.25	59.68 (E-W)

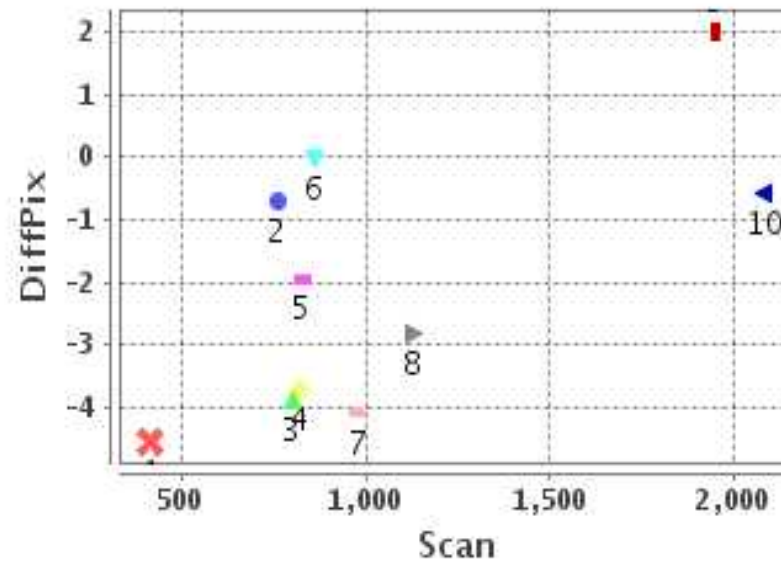
### Identified Control Point details : ( Differences are Reference - Product )

No	Scan	Pix	DiffScan (line)	DiffPix (pixel)	DifLat (Km)	Dir	DifLon (Km)	Dir	Status
1	820.2	863.2	-1.3	-3.73	5.325	N	17.195	W	Accepted
2	760.5	1027.5	-0.8	-0.71	2.176	N	0.920	W	Accepted
3	800.8	451.2	-0.3	-3.88	1.176	S	25.864	W	Accepted
4	1951.8	525.5	0.2	2.02	4.229	S	14.254	E	Accepted
5	2082.5	2125.2	-2.3	-0.58	9.815	N	4.956	W	Accepted
6	979.0	1723.5	-1.9	-4.08	7.374	N	14.578	W	Accepted
7	1128.0	1345.8	-0.3	-2.81	1.305	N	7.713	W	Accepted
8	414.8	880.5	-1.4	-4.55	7.906	N	29.057	W	Accepted
9	859.2	1530.2	-2.5	-0.04	9.959	N	1.544	E	Accepted
10	825.5	1075.5	-4.5	-1.94	18.789	N	8.481	W	Rejected

### Error(Pixels) Vs. GCPScan



### Error(Pixels) Vs. GCPScan



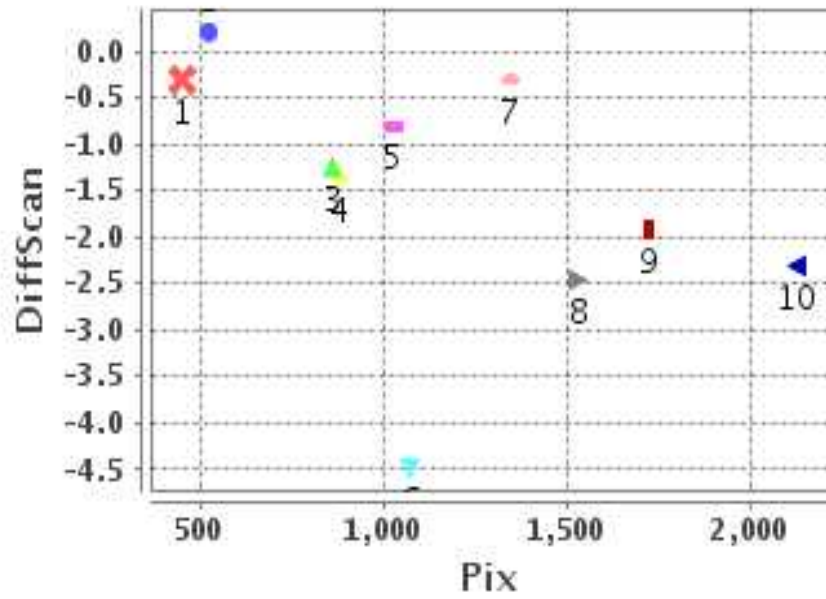
#### Number Of Points

North	7
South	2
East	2
West	7

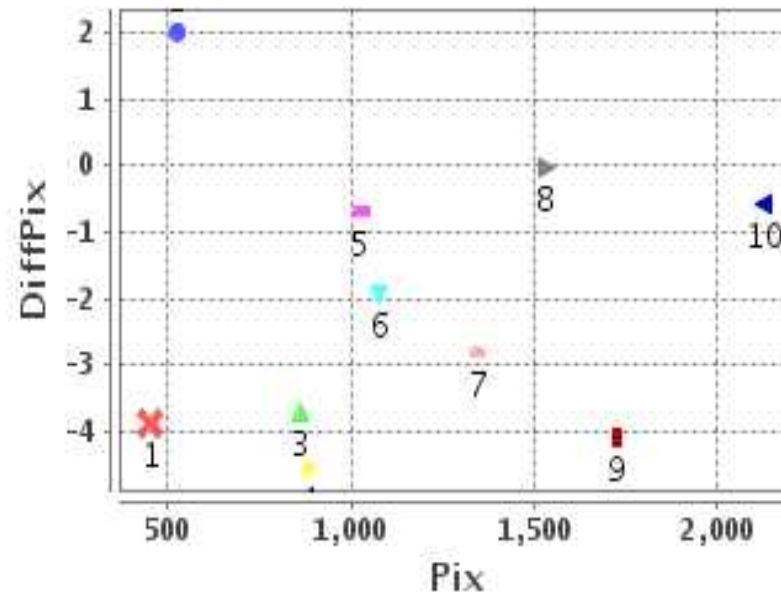
#### Radial Error ( Km )

Mean	3.791
Min	.591
Max	7.528
CE90	6.473

### Error(Pixels) Vs. GCPPix



### Error(Pixels) Vs. GCPPix



#### Location Accuracy

	Mean	StdDev	RMS	Dir	* MinRMS	* MaxRMS
Along( Km )	1.068	1.185	1.595	N	1.445	1.689
Across ( Km )	-2.347	3.248	4.007	W	3.386	4.249

## Block-Wise Geo location Error Statistics

### Location Accuracy,Scale,ID

<b>Scan Range-0-937; Pix Range-0-934</b>		
Number of GCPs	3	
<b>Location Error(Km)</b>		
Along(Mean,Dir)	4.02	N
Across(Mean,Dir)	-24.04	W
<b>Scale(Km)</b>		
Average Scale (Mean,%Variation)	5.68	42.03
<b>Internal Distortion(Pixel)</b>		
Along(Mean,Stddev)	-0.58	0.48
Across(Mean,Stddev)	0.26	0.41

<b>Scan Range-0-937; Pix Range-934-1869</b>		
Number of GCPs	2	
<b>Location Error(Km)</b>		
Along(Mean,Dir)	6.07	N
Across(Mean,Dir)	0.31	E
<b>Scale(Km)</b>		
Average Scale (Mean,%Variation)	4.34	8.55
<b>Internal Distortion(Pixel)</b>		
Along(Mean,Stddev)	1.65	0.00
Across(Mean,Stddev)	-0.67	0.00

<b>Scan Range-0-937; Pix Range-1869-2805</b>		
Number of GCPs	-999	
<b>Location Error(Km)</b>		
Along(Mean,Dir)	-999.99	NotAvail
Across(Mean,Dir)	-999.99	NotAvail
<b>Scale(Km)</b>		
Average Scale (Mean,%Variation)	-999.99	-999.9
<b>Internal Distortion(Pixel)</b>		
Along(Mean,Stddev)	-999.99	-999.99
Across(Mean,Stddev)	-999.99	-999.99

<b>Scan Range-937-1876; Pix Range-0-934</b>		
Number of GCPs	-999	
<b>Location Error(Km)</b>		
Along(Mean,Dir)	-999.99	NotAvail
Across(Mean,Dir)	-999.99	NotAvail
<b>Scale(Km)</b>		
Average Scale (Mean,%Variation)	-999.99	-999.9
<b>Internal Distortion(Pixel)</b>		
Along(Mean,Stddev)	-999.99	-999.99
Across(Mean,Stddev)	-999.99	-999.99

<b>Scan Range-937-1876; Pix Range-934-1869</b>		
Number of GCPs	2	
<b>Location Error(Km)</b>		
Along(Mean,Dir)	4.345	N
Across(Mean,Dir)	-11.15	W
<b>Scale(Km)</b>		
Average Scale (Mean,%Variation)	4.05	1.23
<b>Internal Distortion(Pixel)</b>		
Along(Mean,Stddev)	-1.62	0.00
Across(Mean,Stddev)	1.27	0.00

<b>Scan Range-937-1876; Pix Range-1869-2805</b>		
Number of GCPs	-999	
<b>Location Error(Km)</b>		
Along(Mean,Dir)	-999.99	NotAvail
Across(Mean,Dir)	-999.99	NotAvail
<b>Scale(Km)</b>		
Average Scale (Mean,%Variation)	-999.99	-999.9
<b>Internal Distortion(Pixel)</b>		
Along(Mean,Stddev)	-999.99	-999.99
Across(Mean,Stddev)	-999.99	-999.99

<b>Scan Range-1876-2816; Pix Range-0-934</b>		
Number of GCPs	1	
<b>Location Error(Km)</b>		
Along(Mean,Dir)	-4.23	S
Across(Mean,Dir)	14.26	E
<b>Scale(Km)</b>		
Average Scale (Mean,%Variation)	-999.99	-999.9
<b>Internal Distortion(Pixel)</b>		
Along(Mean,Stddev)	-999.99	-999.99
Across(Mean,Stddev)	-999.99	-999.99

<b>Scan Range-1876-2816; Pix Range-937-1869</b>		
Number of GCPs	-999	
<b>Location Error(Km)</b>		
Along(Mean,Dir)	-999.99	NotAvail
Across(Mean,Dir)	-999.99	NotAvail
<b>Scale(Km)</b>		
Average Scale (Mean,%Variation)	-999.99	-999.9
<b>Internal Distortion(Pixel)</b>		
Along(Mean,Stddev)	-999.99	-999.99
Across(Mean,Stddev)	-999.99	-999.99

<b>Scan Range-1876-2816; Pix Range-1869-2805</b>		
Number of GCPs	1	
<b>Location Error(Km)</b>		
Along(Mean,Dir)	9.81	N
Across(Mean,Dir)	-4.96	W
<b>Scale(Km)</b>		
Average Scale (Mean,%Variation)	-999.99	-999.9
<b>Internal Distortion(Pixel)</b>		
Along(Mean,Stddev)	-999.99	-999.99
Across(Mean,Stddev)	-999.99	-999.99

\*-999 : no gcp available

\* -999.99 : values are not computed