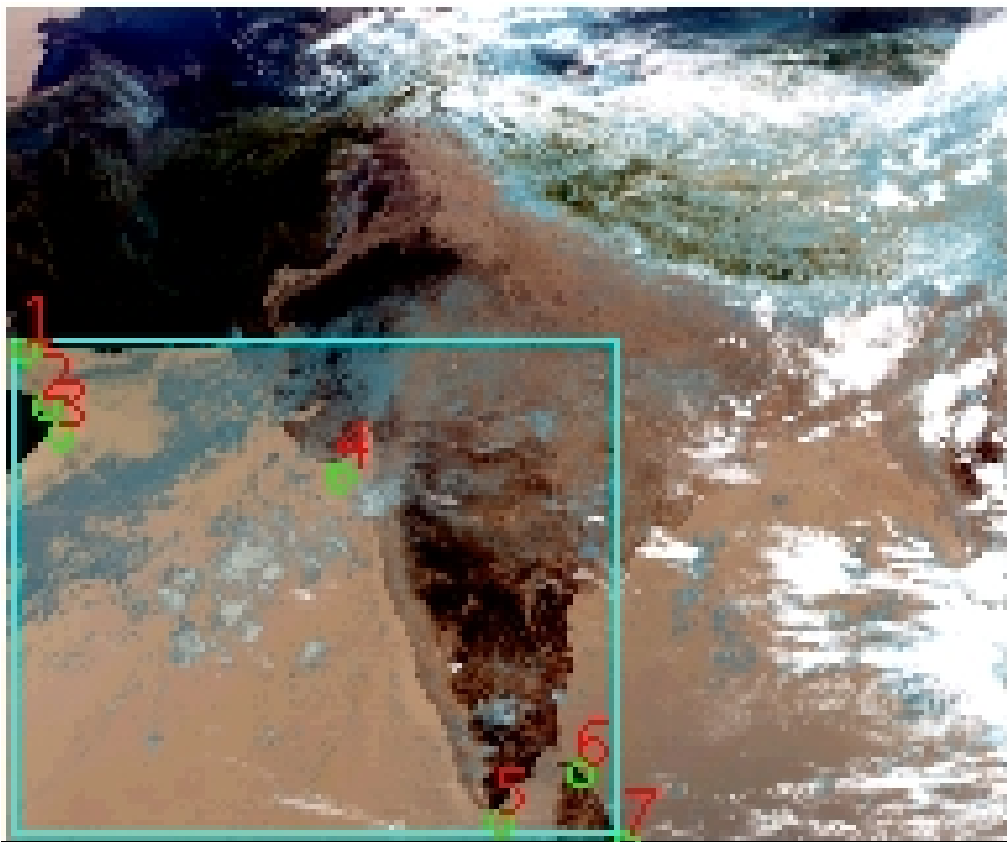


# DQE Report: Location Accuracy of INSAT-3D-SND STANDARD Product 3DSND\_14SEP2018\_0600

Satellite	INSAT-3D	No Of Bands	19	Product Type	STANDARD
Sensor	SND	LvlOfProcess	L1B	Selected Band	2-LWIR3
DOP/Time	14-09-18/06:00	Station ID	BES	Field View(deg)	6.136
Res(Y,X) [Km]	(10.0,10.0)	Res(Y,X) [uRad]	(280.0,280.0)		

(41.555N,50.11W)

(41.555N,100.795E)



(6.899S,50.11W)

(6.899S,100.795E)

GCP Distribution overview for 3DSND14SEP20180600L1BSA1

Image Width: 384 Image Height: 320 No Of GCPs: 7

GCP Coverage(%) 58.59 (N-S) 59.64 (E-W)

## Location Error(E)

Legend — 0Km < E <= 50Km — 50Km < E <= 100Km — E >100Km

## Location Error (In IR Pixels)

	Mean	Direction	Stddev	RMS
Along	2.763	N	1.232	3.025
Across	-2.508	W	1.125	2.749

## Scale (Km)

	Pixel Size	Stddev	%variation
Average	11.242	1.391	12.424
Along	9.773	0.290	2.267
Across	11.713	0.932	17.130

## Internal Distortion (in IR Pixels)

	PeakToPeak	Mean	Stddev	RMS
Along	3.540	1.725	1.14	2.070
Across	2.995	0.893	0.97	1.315

## Attitude Residuals (Deg)

Pitch	Roll	Yaw
-0.03653	-0.04834	0.24394

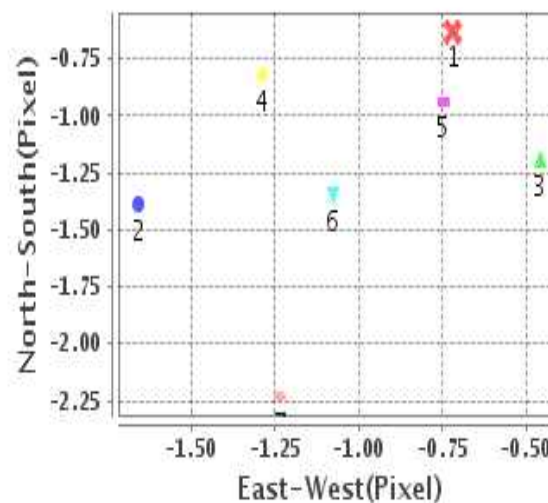
## Reference Used

Sensor	Resolution	Projection
ETM	500.00	GGP

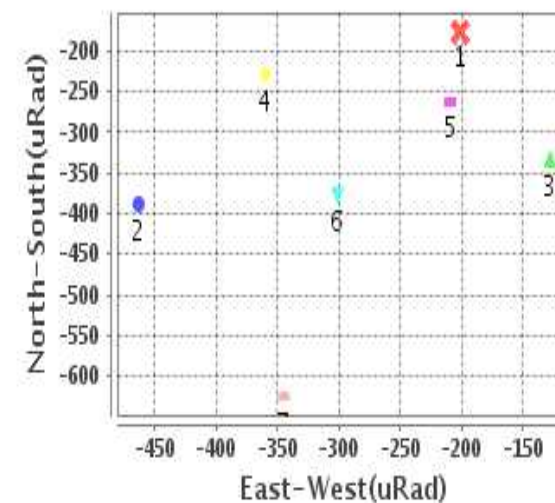
## Radial Error (in IR Pixels)

Mean	3.837
Min	2.103
Max	5.940
CE90	5.853

## Location Error For GCPs(Pixel)



## Location Error For GCPs(uRad)



## Detailed Product Information

### Ancillary Info

<b>Satellite</b>	INSAT-3D	<b>Generation Date</b>	14-09-18
<b>Sensor</b>	SND	<b>DQE Date</b>	18-09-2018
<b>PassType</b>	NONE	<b>Aquisition Date</b>	14-09-18
<b>Imaging Mode</b>	FULL_FRAME	<b>Aquisition Time(GMT)</b>	06:00
<b>Sat Altitude(m)</b>	3.6E7	<b>Nominal Altitude(Km)</b>	3.6E7
<b>Station</b>	BES	<b>Predicted Altitude(Km)</b>	-999.99
<b>Sat Location(deg)</b>	-999.99 E	<b>Nominal Center Lat(deg)</b>	0.0
<b>Format</b>	hdf5-1.8.8	<b>Nominal Center Lon(deg)</b>	82.0
<b>LvlOfProcessing</b>	STANDARD	<b>Predicted Center Lat(deg)</b>	-999.99
<b>DP JobId</b>	3DSND_14SEP20	<b>Predicted Center Lon(deg)</b>	-999.99
<b>ProductCode</b>	NONE		
<b>Field View(deg)</b>	6.136		

### Projection Parameters

<b>Projection</b>	None
<b>Ellipsoid</b>	WGS_84
<b>Datum</b>	WGS_84
<b>Zone</b>	NotAvail
<b>Semi_Major_Axis(Km)</b>	6378.14
<b>Semi_Minor_Axis(Km)</b>	6356.75
<b>Standard_Parallel1(deg)</b>	-999.99
<b>Standard_Parallel2(deg)</b>	-999.99
<b>Projection_Origin_Lon(deg)</b>	-999.99
<b>Projection_Origin_Lat(deg)</b>	-999.99
<b>Projection_False_Easting(Km)</b>	-999.99
<b>Projection_False_Northing(Km)</b>	-999.99

### Scene Center Desc

<b>Centre Lat(deg)</b>	24.227
<b>Center Lon(deg)</b>	75.452
<b>Centre Roll(deg)</b>	-999.0
<b>Centre Pitch(deg)</b>	-999.0
<b>Center Yaw(deg)</b>	-999.0
<b>SunElevation(deg)</b>	-999.99
<b>SunAzimuth(deg)</b>	-999.99
<b>SatElevation(deg)</b>	-999.99
<b>SatAzimuth(deg)</b>	-999.99

### Scene Corner Desc

<b>NW_Lat(deg)</b>	41.555
<b>NW_Lon(deg)</b>	50.11
<b>SW_Lat(deg)</b>	6.899
<b>SW_Lon(deg)</b>	50.11
<b>NE_Lat(deg)</b>	41.555
<b>NE_Lon(deg)</b>	100.795
<b>SE_Lat(deg)</b>	6.899
<b>SE_Lon(deg)</b>	100.795

### Band Wise Details

	Res_AL(Km)	Res_AX(Km)	Image Height	Image Width
<b>LWIR1</b>	10.0	10.0	320	384
<b>LWIR2</b>	10.0	10.0	320	384
<b>LWIR3</b>	10.0	10.0	320	384
<b>LWIR4</b>	10.0	10.0	320	384
<b>LWIR5</b>	10.0	10.0	320	384
<b>LWIR6</b>	10.0	10.0	320	384

## GDQE Computation Base

<b>Projection</b>	MER	<b>Wildpoint Rejection Threshold</b>	2.60	<b>SemiMajorAxis(m)</b>	6378137.00	<b>Mode Of Computation</b>	grid
<b>Ellipsoid</b>	WGS_84		-sigma	<b>SemiMinorAxis(m)</b>	6356752.31	<b>Used Reference Type</b>	REFINSREF
<b>Datum</b>	WGS_84	<b>Unit</b>	meters	<b>Standardparallel1(deg)</b>	17.0		
<b>Zone</b>	Not Applicable			<b>Standardparallel2(deg)</b>	17.0		

\* -999.99 : Not Applicable/Not Available

## References

**JobId : 3DSND14SEP20180600L1BSA1**

(-999.99 - Not Available/Not Computed)

Ref.No	Source	File Name	Resolution ( m )	Projection
1	ETM	world_Band1.img	500.0	GGP

## Location Accuracy

### GCP Distribution Statistics

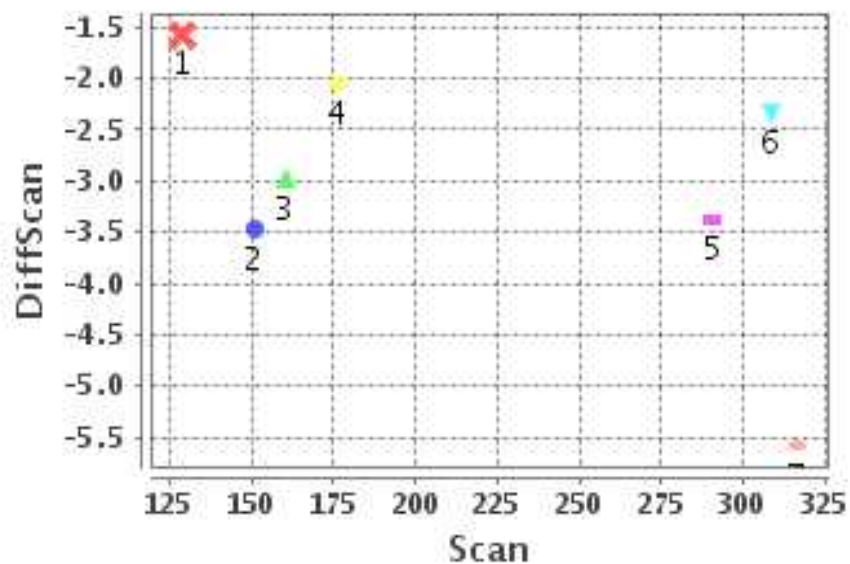
Image Width (pixels) : 384      Image Height (pixels) : 320      No of GCPs : 7

	Mean	StdDev	Min	Max	Coverage(in %)
<b>GCP Scan</b>	218.8	76.2	128.8	316.25	58.59 (N-S)
<b>GCP Pix</b>	114.5	93.7	5.2	234.25	59.64 (E-W)

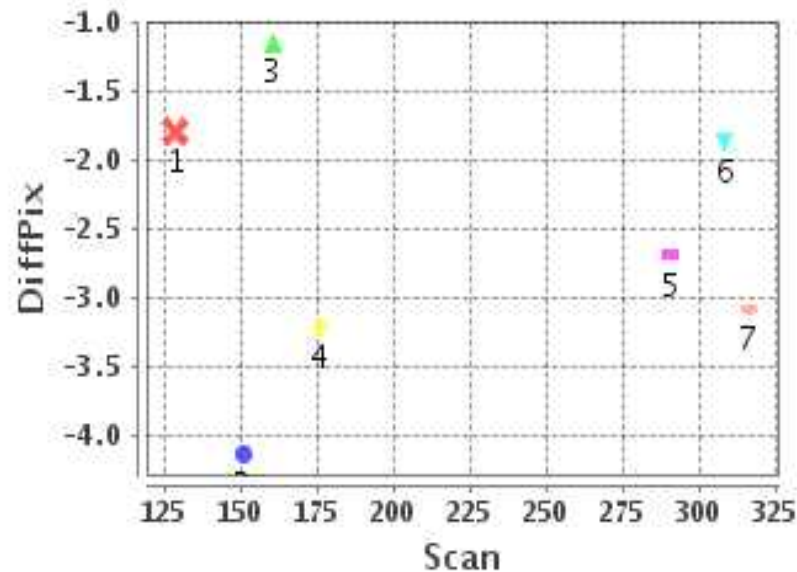
### Identified Control Point details : ( Differences are Reference - Product )

No	Scan	Pix	DiffScan (line)	DiffPix (pixel)	DifLat (Km)	Dir	DifLon (Km)	Dir	Status
1	128.8	5.2	-1.6	-1.80	10.624	N	23.296	W	Accepted
2	150.8	13.8	-3.5	-4.14	34.372	N	47.378	W	Accepted
3	160.5	19.5	-3.0	-1.15	29.321	N	14.755	W	Accepted
4	176.0	124.5	-2.0	-3.22	23.857	N	31.649	W	Accepted
5	308.5	186.8	-2.3	-1.87	17.711	N	11.331	W	Accepted
6	290.8	217.8	-3.4	-2.69	25.271	N	18.948	W	Accepted
7	316.2	234.2	-5.6	-3.08	52.269	N	28.217	W	Accepted

### Error(Pixels) Vs. GCPScan



### Error(Pixels) Vs. GCPScan



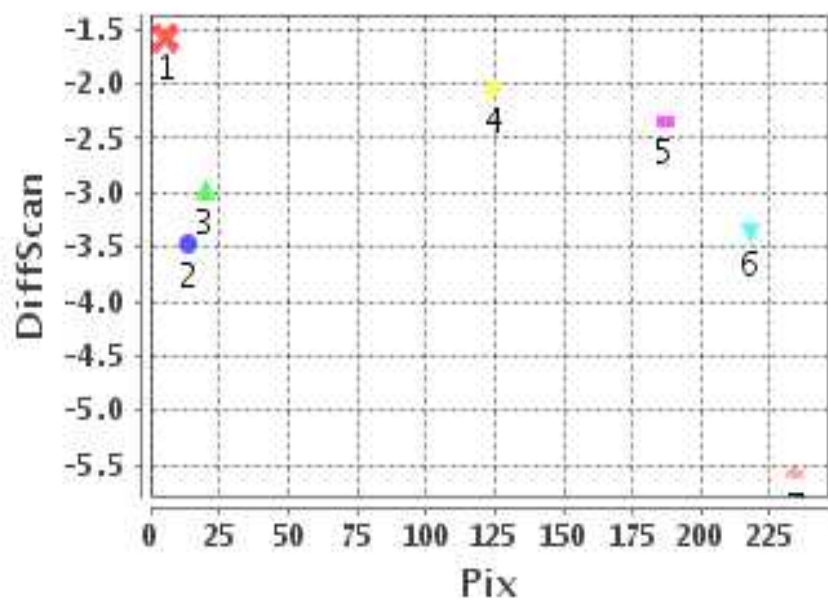
#### Number Of Points

North	7
South	0
East	0
West	7

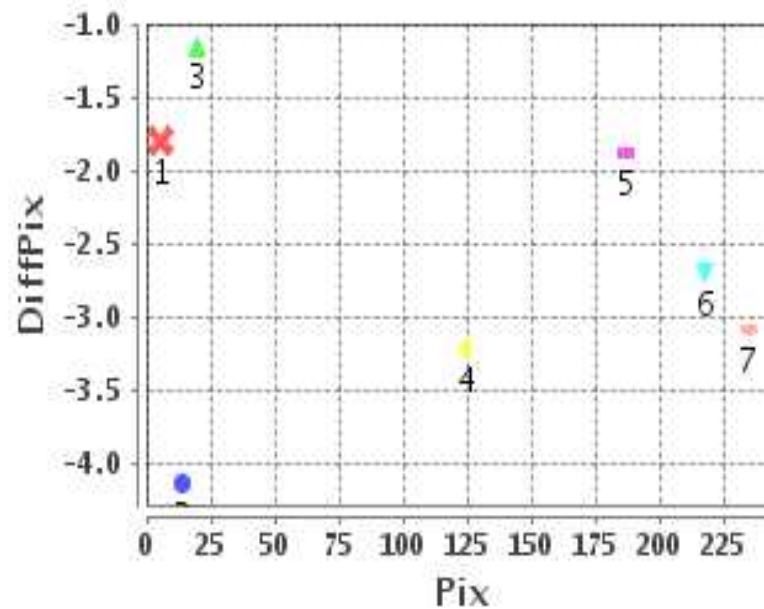
#### Radial Error ( Km )

Mean	3.837
Min	2.103
Max	5.940
CE90	5.853

### Error(Pixels) Vs. GCPPix



### Error(Pixels) Vs. GCPPix



#### Location Accuracy

	Mean	StdDev	RMS	Dir	* MinRMS	* MaxRMS
Along( Km )	2.763	1.232	3.025	N	2.475	3.239
Across ( Km )	-2.508	1.125	2.749	W	2.253	2.933

## Block-Wise Geo location Error Statistics

### Location Accuracy,Scale,ID

<b>Scan Range-0-105; Pix Range-0-127</b>		
Number of GCPs	-999	
<b>Location Error(Km)</b>		
Along(Mean,Dir)	-999.99	NotAvail
Across(Mean,Dir)	-999.99	NotAvail
<b>Scale(Km)</b>		
Average Scale (Mean,%Variation)	-999.99	-999.9
<b>Internal Distortion(Pixel)</b>		
Along(Mean,Stddev)	-999.99	-999.99
Across(Mean,Stddev)	-999.99	-999.99

<b>Scan Range-0-105; Pix Range-127-255</b>		
Number of GCPs	-999	
<b>Location Error(Km)</b>		
Along(Mean,Dir)	-999.99	NotAvail
Across(Mean,Dir)	-999.99	NotAvail
<b>Scale(Km)</b>		
Average Scale (Mean,%Variation)	-999.99	-999.9
<b>Internal Distortion(Pixel)</b>		
Along(Mean,Stddev)	-999.99	-999.99
Across(Mean,Stddev)	-999.99	-999.99

<b>Scan Range-0-105; Pix Range-255-384</b>		
Number of GCPs	-999	
<b>Location Error(Km)</b>		
Along(Mean,Dir)	-999.99	NotAvail
Across(Mean,Dir)	-999.99	NotAvail
<b>Scale(Km)</b>		
Average Scale (Mean,%Variation)	-999.99	-999.9
<b>Internal Distortion(Pixel)</b>		
Along(Mean,Stddev)	-999.99	-999.99
Across(Mean,Stddev)	-999.99	-999.99

<b>Scan Range-105-212; Pix Range-0-127</b>		
Number of GCPs	4	
<b>Location Error(Km)</b>		
Along(Mean,Dir)	24.5425	N
Across(Mean,Dir)	-29.27	W
<b>Scale(Km)</b>		
Average Scale (Mean,%Variation)	12.75	27.52
<b>Internal Distortion(Pixel)</b>		
Along(Mean,Stddev)	1.26	0.59
Across(Mean,Stddev)	1.04	1.25

<b>Scan Range-105-212; Pix Range-127-255</b>		
Number of GCPs	-999	
<b>Location Error(Km)</b>		
Along(Mean,Dir)	-999.99	NotAvail
Across(Mean,Dir)	-999.99	NotAvail
<b>Scale(Km)</b>		
Average Scale (Mean,%Variation)	-999.99	-999.9
<b>Internal Distortion(Pixel)</b>		
Along(Mean,Stddev)	-999.99	-999.99
Across(Mean,Stddev)	-999.99	-999.99

<b>Scan Range-105-212; Pix Range-255-384</b>		
Number of GCPs	-999	
<b>Location Error(Km)</b>		
Along(Mean,Dir)	-999.99	NotAvail
Across(Mean,Dir)	-999.99	NotAvail
<b>Scale(Km)</b>		
Average Scale (Mean,%Variation)	-999.99	-999.9
<b>Internal Distortion(Pixel)</b>		
Along(Mean,Stddev)	-999.99	-999.99
Across(Mean,Stddev)	-999.99	-999.99

<b>Scan Range-212-320; Pix Range-0-127</b>		
Number of GCPs	-999	
<b>Location Error(Km)</b>		
Along(Mean,Dir)	-999.99	NotAvail
Across(Mean,Dir)	-999.99	NotAvail
<b>Scale(Km)</b>		
Average Scale (Mean,%Variation)	-999.99	-999.9
<b>Internal Distortion(Pixel)</b>		
Along(Mean,Stddev)	-999.99	-999.99
Across(Mean,Stddev)	-999.99	-999.99

<b>Scan Range-212-320; Pix Range-105-255</b>		
Number of GCPs	3	
<b>Location Error(Km)</b>		
Along(Mean,Dir)	31.75	N
Across(Mean,Dir)	-19.50	W
<b>Scale(Km)</b>		
Average Scale (Mean,%Variation)	9.39	6.10
<b>Internal Distortion(Pixel)</b>		
Along(Mean,Stddev)	0.60	1.62
Across(Mean,Stddev)	1.02	0.20

<b>Scan Range-212-320; Pix Range-255-384</b>		
Number of GCPs	-999	
<b>Location Error(Km)</b>		
Along(Mean,Dir)	-999.99	NotAvail
Across(Mean,Dir)	-999.99	NotAvail
<b>Scale(Km)</b>		
Average Scale (Mean,%Variation)	-999.99	-999.9
<b>Internal Distortion(Pixel)</b>		
Along(Mean,Stddev)	-999.99	-999.99
Across(Mean,Stddev)	-999.99	-999.99

\*-999 : no gcp available

\* -999.99 : values are not computed