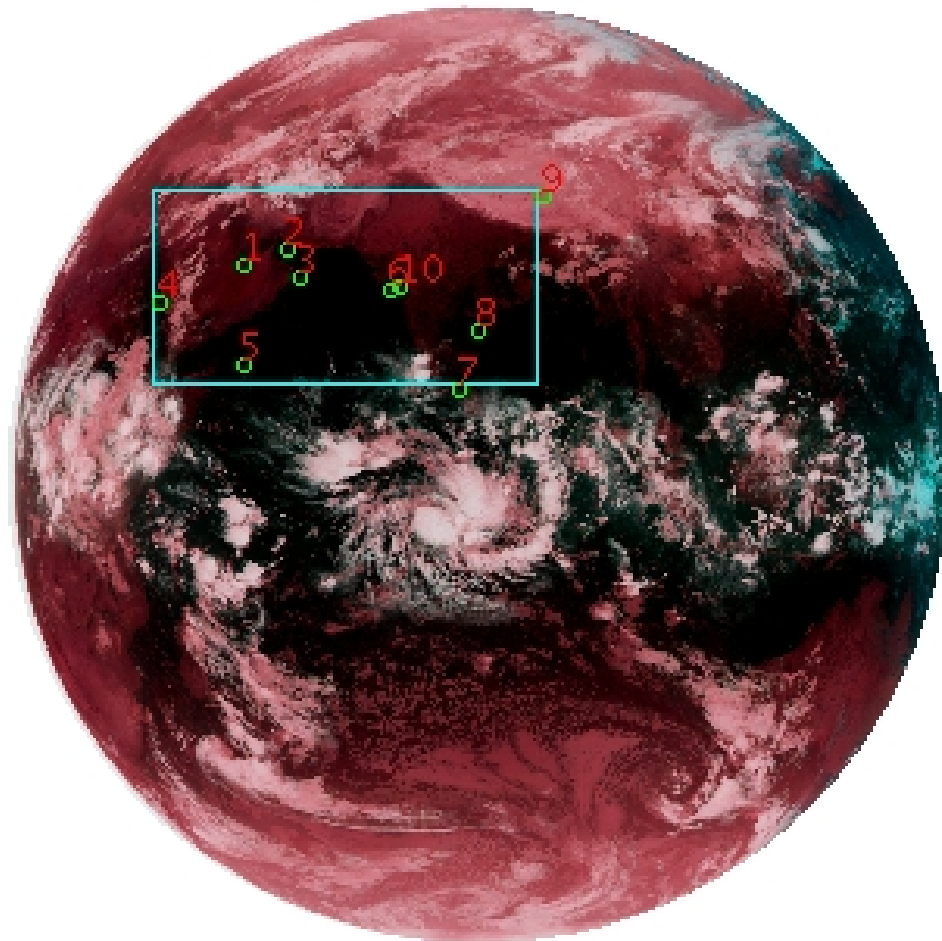


# DQE Report: Location Accuracy of INSAT-3D-IMG STANDARD(FULL DISK) Product 3DIMG\_21APR2018\_2130

**Satellite** INSAT-3D      **No Of Bands** 6      **Product Type** STANDARD  
**Sensor** IMG      **LvlOfProcess** L1B      **Selected Band** 2-TIR1  
**DOP/Time** 21-04-18/21:30      **Station ID** BES      **Field View(deg)** 17.974  
**Res(Y,X) [Km]** (4.0,4.0)      **Res(Y,X) [uRad]** (112.0,112.0)

(81.042N,0.843W)

(81.042N,163.157E)



(-81.042S,0.843W)

(-81.042S,163.157E)

GCP Distribution overview for 3DIMG21APR20182130L1BSTD

**Image Width:** 2805      **Image Height:** 2816      **No Of GCPs:** 10

**GCP Coverage(%)**      19.90      **(N-S)** 39.51      **(E-W)**

## Location Error(E)

**Legend**      — 0Km < E <= 50Km      — 50Km < E <= 100Km      — E >100Km

## Location Error (In IR Pixels)

	Mean	Direction	Stddev	RMS
Along	-0.194	S	0.788	0.812
Across	-2.918	W	1.105	3.120

## Scale (Km)

	Pixel Size	Stddev	%variation
Average	4.622	0.403	15.545
Along	5.245	3.138	31.122
Across	4.718	0.800	17.946

## Internal Distortion (in IR Pixels)

	PeakToPeak	Mean	Stddev	RMS
Along	2.353	1.323	0.70	1.497
Across	4.087	0.982	1.22	1.569

## Attitude Residuals (Deg)

Pitch	Roll	Yaw
-0.02277	-0.00059	0.03206

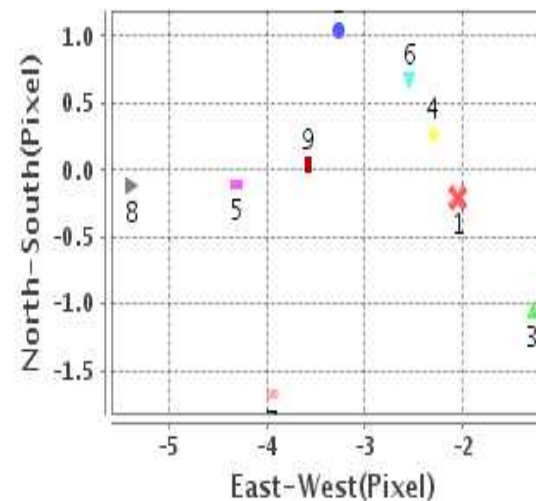
## Reference Used

Sensor	Resolution	Projection
ETM	500.00	GGP

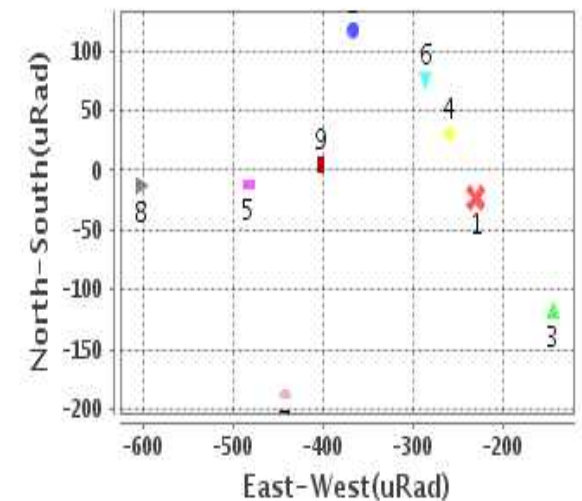
## Radial Error (in IR Pixels)

<b>Mean</b>	3.055
<b>Min</b>	1.698
<b>Max</b>	4.809
<b>CE90</b>	4.241

## Location Error For GCPs(Pixel)



## Location Error For GCPs(uRad)



## Detailed Product Information

### Ancillary Info

<b>Satellite</b>	INSAT-3D	<b>Generation Date</b>	22-04-18
<b>Sensor</b>	IMG	<b>DQE Date</b>	23-04-2018
<b>PassType</b>	NONE	<b>Aquisition Date</b>	21-04-18
<b>Imaging Mode</b>	FULL_FRAME	<b>Aquisition Time(GMT)</b>	21:30
<b>Sat Altitude(m)</b>	3.6E7	<b>Nominal Altitude(Km)</b>	3.6E7
<b>Station</b>	BES	<b>Predicted Altitude(Km)</b>	-999.99
<b>Sat Location(deg)</b>	-999.99 E	<b>Nominal Center Lat(deg)</b>	0.0
<b>Format</b>	hdf5-1.8.8	<b>Nominal Center Lon(deg)</b>	82.0
<b>LvlOfProcessing</b>	STANDARD(FULL	<b>Predicted Center Lat(deg)</b>	-999.99
<b>DP JobId</b>	3DIMG_21APR20	<b>Predicted Center Lon(deg)</b>	-999.99
<b>ProductCode</b>	NONE		
<b>Field View(deg)</b>	17.974		

### Projection Parameters

<b>Projection</b>	None
<b>Ellipsoid</b>	WGS_84
<b>Datum</b>	WGS_84
<b>Zone</b>	NotAvail
<b>Semi_Major_Axis(Km)</b>	6378.14
<b>Semi_Minor_Axis(Km)</b>	6356.75
<b>Standard_Parallel1(deg)</b>	-999.99
<b>Standard_Parallel2(deg)</b>	-999.99
<b>Projection_Origin_Lon(deg)</b>	-999.99
<b>Projection_Origin_Lat(deg)</b>	-999.99
<b>Projection_False_Easting(Km)</b>	-999.99
<b>Projection_False_Northing(Km)</b>	-999.99

### Scene Center Desc

<b>Centre Lat(deg)</b>	0.0
<b>Center Lon(deg)</b>	82.0
<b>Centre Roll(deg)</b>	-999.0
<b>Centre Pitch(deg)</b>	-999.0
<b>Center Yaw(deg)</b>	-999.0
<b>SunElevation(deg)</b>	-999.99
<b>SunAzimuth(deg)</b>	-999.99
<b>SatElevation(deg)</b>	-999.99
<b>SatAzimuth(deg)</b>	-999.99

### Scene Corner Desc

<b>NW_Lat(deg)</b>	81.042
<b>NW_Lon(deg)</b>	0.843
<b>SW_Lat(deg)</b>	-81.042
<b>SW_Lon(deg)</b>	0.843
<b>NE_Lat(deg)</b>	81.042
<b>NE_Lon(deg)</b>	163.157
<b>SE_Lat(deg)</b>	-81.042
<b>SE_Lon(deg)</b>	163.157

### Band Wise Details

	Res_AL(Km)	Res_AX(Km)	Image Height	Image Width
<b>MIR</b>	4.0	4.0	2816	2805
<b>SWIR</b>	1.0	1.0	11264	11220
<b>TIR1</b>	4.0	4.0	2816	2805
<b>TIR2</b>	4.0	4.0	2816	2805
<b>VIS</b>	1.0	1.0	11264	11220
<b>WV</b>	8.0	8.0	1408	1402

## GDQE Computation Base

<b>Projection</b>	MER	<b>Wildpoint Rejection Threshold</b>	2.60	<b>SemiMajorAxis(m)</b>	6378137.00	<b>Mode Of Computation</b>	grid
<b>Ellipsoid</b>	WGS_84		-sigma	<b>SemiMinorAxis(m)</b>	6356752.31	<b>Used Reference Type</b>	REFINSREF
<b>Datum</b>	WGS_84	<b>Unit</b>	pixels	<b>Standardparallel1(deg)</b>	17.0		
<b>Zone</b>	Not Applicable			<b>Standardparallel2(deg)</b>	17.0		

\* -999.99 : Not Applicable/Not Available

## References

**JobId : 3DIMG21APR20182130L1BSTD**

(-999.99 - Not Available/Not Computed)

Ref.No	Source	File Name	Resolution ( m )	Projection
1	ETM	world_Band1.img	500.0	GGP

## Location Accuracy

### GCP Distribution Statistics

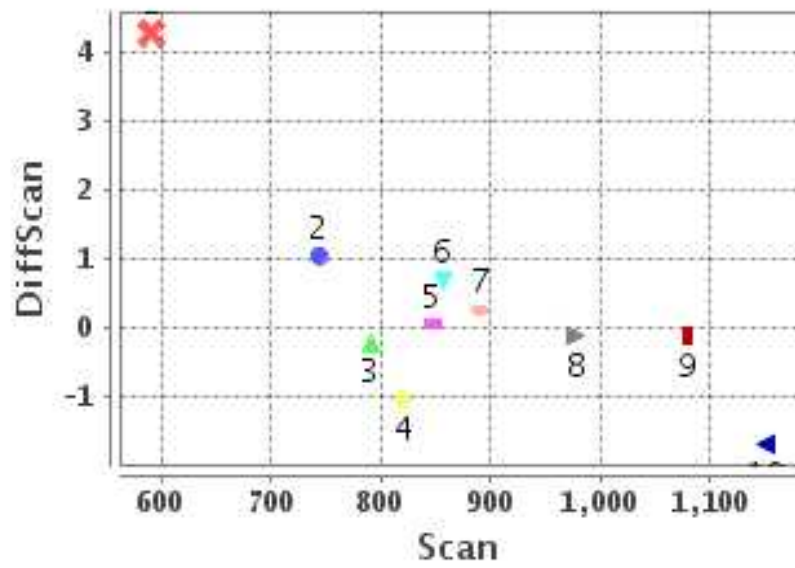
Image Width (pixels) : 2805      Image Height (pixels) : 2816      No of GCPs : 10

	Mean	StdDev	Min	Max	Coverage(in %)
<b>GCP Scan</b>	874.9	154.3	590.5	1150.75	19.90 (N-S)
<b>GCP Pix</b>	1006.7	335.1	456.8	1565.00	39.51 (E-W)

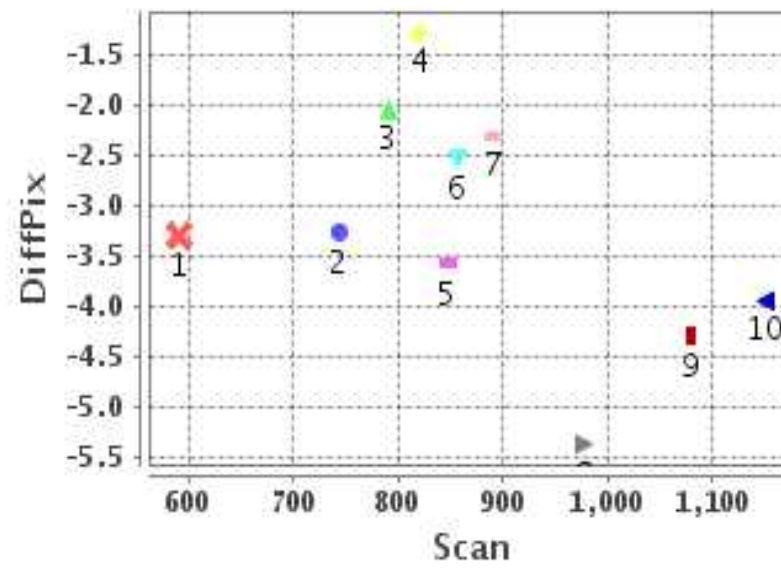
### Identified Control Point details : ( Differences are Reference - Product )

No	Scan	Pix	DiffScan (line)	DiffPix (pixel)	DifLat (Km)	Dir	DifLon (Km)	Dir	Status
1	791.2	699.8	-0.2	-2.05	0.403	S	7.218	W	Accepted
2	743.2	825.5	1.1	-3.26	6.575	S	11.982	W	Accepted
3	820.2	861.2	-1.1	-1.29	4.131	N	5.393	W	Accepted
4	891.2	456.8	0.3	-2.31	2.010	S	9.955	W	Accepted
5	1079.2	697.8	-0.1	-4.30	0.615	S	16.954	W	Accepted
6	857.2	1119.8	0.7	-2.55	4.183	S	7.157	W	Accepted
7	1150.8	1319.8	-1.7	-3.94	3.488	N	12.966	W	Accepted
8	978.2	1372.5	-0.1	-5.37	0.607	S	19.227	W	Accepted
9	590.5	1565.0	4.3	-3.31	28.592	S	17.323	W	Rejected
10	847.0	1149.2	0.0	-3.58	0.220	S	14.198	W	Accepted

### Error(Pixels) Vs. GCPScan



### Error(Pixels) Vs. GCPScan



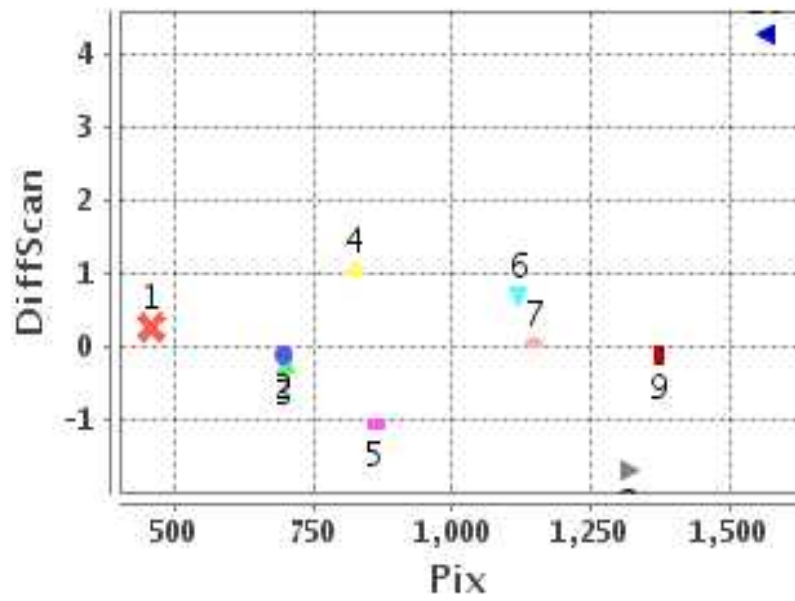
#### Number Of Points

North	2
South	7
East	0
West	9

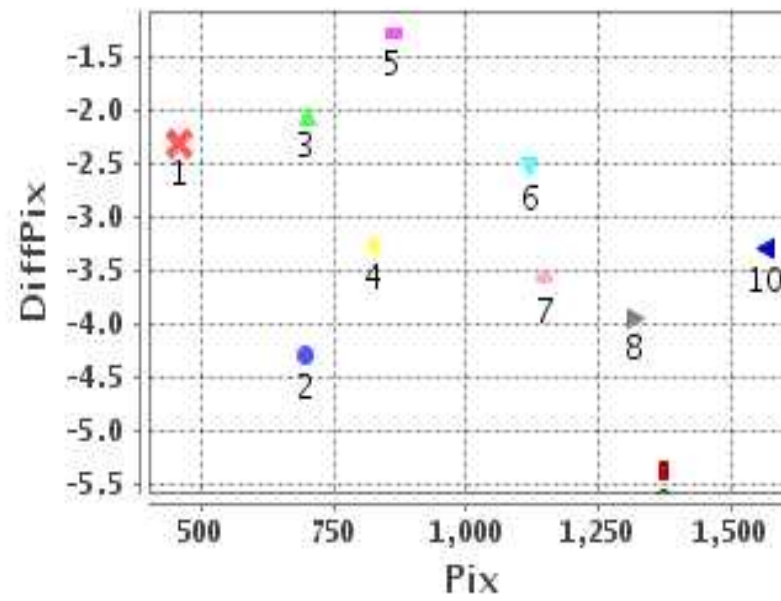
#### Radial Error ( Km )

Mean	3.055
Min	1.698
Max	4.809
CE90	4.241

### Error(Pixels) Vs. GCPPix



### Error(Pixels) Vs. GCPPix



#### Location Accuracy

	Mean	StdDev	RMS	Dir	* MinRMS	* MaxRMS
Along( Km )	-0.194	0.788	0.812	S	0.636	0.861
Across ( Km )	-2.918	1.105	3.120	W	2.840	3.275

## Block-Wise Geo location Error Statistics

### Location Accuracy,Scale,ID

<b>Scan Range-0-937; Pix Range-0-934</b>		
Number of GCPs	4	
<b>Location Error(Km)</b>		
Along(Mean,Dir)	-1.215	S
Across(Mean,Dir)	-8.64	W
<b>Scale(Km)</b>		
Average Scale (Mean,%Variation)	5.10	27.43
<b>Internal Distortion(Pixel)</b>		
Along(Mean,Stddev)	1.38	0.54
Across(Mean,Stddev)	-0.11	0.81

<b>Scan Range-0-937; Pix Range-934-1869</b>		
Number of GCPs	2	
<b>Location Error(Km)</b>		
Along(Mean,Dir)	-2.2	S
Across(Mean,Dir)	-10.68	W
<b>Scale(Km)</b>		
Average Scale (Mean,%Variation)	4.07	1.69
<b>Internal Distortion(Pixel)</b>		
Along(Mean,Stddev)	-0.63	0.00
Across(Mean,Stddev)	1.03	0.00

<b>Scan Range-0-937; Pix Range-1869-2805</b>		
Number of GCPs	-999	
<b>Location Error(Km)</b>		
Along(Mean,Dir)	-999.99	NotAvail
Across(Mean,Dir)	-999.99	NotAvail
<b>Scale(Km)</b>		
Average Scale (Mean,%Variation)	-999.99	-999.9
<b>Internal Distortion(Pixel)</b>		
Along(Mean,Stddev)	-999.99	-999.99
Across(Mean,Stddev)	-999.99	-999.99

<b>Scan Range-937-1876; Pix Range-0-934</b>		
Number of GCPs	1	
<b>Location Error(Km)</b>		
Along(Mean,Dir)	-0.62	S
Across(Mean,Dir)	-16.95	W
<b>Scale(Km)</b>		
Average Scale (Mean,%Variation)	-999.99	-999.9
<b>Internal Distortion(Pixel)</b>		
Along(Mean,Stddev)	-999.99	-999.99
Across(Mean,Stddev)	-999.99	-999.99

<b>Scan Range-937-1876; Pix Range-934-1869</b>		
Number of GCPs	2	
<b>Location Error(Km)</b>		
Along(Mean,Dir)	1.445	N
Across(Mean,Dir)	-16.10	W
<b>Scale(Km)</b>		
Average Scale (Mean,%Variation)	4.02	0.62
<b>Internal Distortion(Pixel)</b>		
Along(Mean,Stddev)	1.57	0.00
Across(Mean,Stddev)	1.43	0.00

<b>Scan Range-937-1876; Pix Range-1869-2805</b>		
Number of GCPs	-999	
<b>Location Error(Km)</b>		
Along(Mean,Dir)	-999.99	NotAvail
Across(Mean,Dir)	-999.99	NotAvail
<b>Scale(Km)</b>		
Average Scale (Mean,%Variation)	-999.99	-999.9
<b>Internal Distortion(Pixel)</b>		
Along(Mean,Stddev)	-999.99	-999.99
Across(Mean,Stddev)	-999.99	-999.99

<b>Scan Range-1876-2816; Pix Range-0-934</b>		
Number of GCPs	-999	
<b>Location Error(Km)</b>		
Along(Mean,Dir)	-999.99	NotAvail
Across(Mean,Dir)	-999.99	NotAvail
<b>Scale(Km)</b>		
Average Scale (Mean,%Variation)	-999.99	-999.9
<b>Internal Distortion(Pixel)</b>		
Along(Mean,Stddev)	-999.99	-999.99
Across(Mean,Stddev)	-999.99	-999.99

<b>Scan Range-1876-2816; Pix Range-937-1869</b>		
Number of GCPs	-999	
<b>Location Error(Km)</b>		
Along(Mean,Dir)	-999.99	NotAvail
Across(Mean,Dir)	-999.99	NotAvail
<b>Scale(Km)</b>		
Average Scale (Mean,%Variation)	-999.99	-999.9
<b>Internal Distortion(Pixel)</b>		
Along(Mean,Stddev)	-999.99	-999.99
Across(Mean,Stddev)	-999.99	-999.99

<b>Scan Range-1876-2816; Pix Range-1869-2805</b>		
Number of GCPs	-999	
<b>Location Error(Km)</b>		
Along(Mean,Dir)	-999.99	NotAvail
Across(Mean,Dir)	-999.99	NotAvail
<b>Scale(Km)</b>		
Average Scale (Mean,%Variation)	-999.99	-999.9
<b>Internal Distortion(Pixel)</b>		
Along(Mean,Stddev)	-999.99	-999.99
Across(Mean,Stddev)	-999.99	-999.99

\*-999 : no gcp available

\* -999.99 : values are not computed