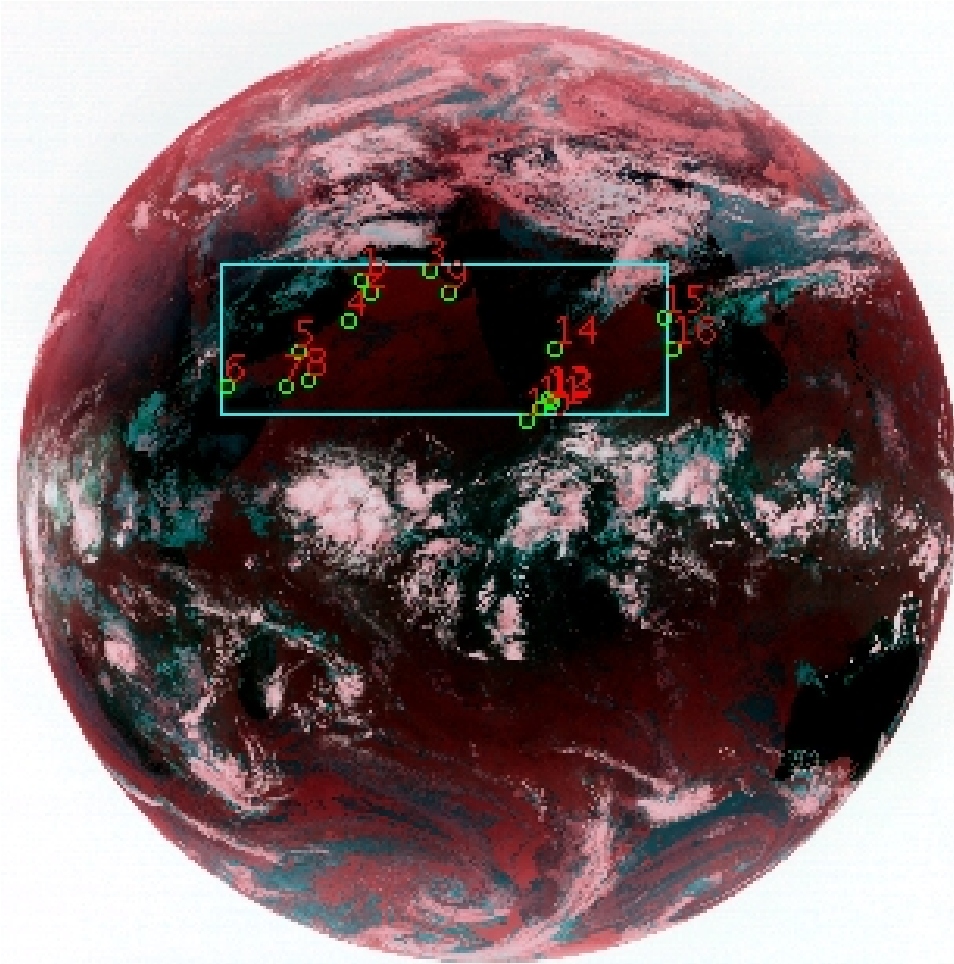


DQE Report: Location Accuracy of INSAT-3DR-IMG STANDARD (FULL DISK) Product 3RIMG_16FEB2019_0615

Satellite INSAT-3DR **No Of Bands** 6 **Product Type** STANDARD
Sensor IMG **LvlOfProcess** L1B **Selected Band** 2-TIR1
DOP/Time 16-02-19/06:15 **Station ID** BES **Field View(deg)** 18.006
Res(Y,X) [Km] (4.0,4.0) **Res(Y,X) [uRad]** (112.0,112.0)

(81.244N,-7.118W)

(81.244N,155.224E)



(-81.258S,-7.118W)

(-81.258S,155.224E)

GCP Distribution overview for 3RIMG16FEB20190615L1BDQE

Image Width: 2805 **Image Height:** 2816 **No Of GCPs:** 16

GCP Coverage(%) 15.34 **(N-S)** 45.96 **(E-W)**

Location Error(E)

Legend — 0Km < E <= 50Km — 50Km < E <= 100Km — E >100Km

Location Error (In IR Pixels)

	Mean	Direction	Stddev	RMS
Along	-4.498	S	0.726	4.556
Across	11.077	E	1.968	11.251

Scale (Km)

	Pixel Size	Stddev	%variation
Average	4.182	0.163	4.548
Along	4.415	0.926	10.386
Across	4.285	0.573	7.116

Internal Distortion (in IR Pixels)

	PeakToPeak	Mean	Stddev	RMS
Along	2.210	0.240	0.60	0.648
Across	5.316	0.421	1.39	1.453

Attitude Residuals (Deg)

Pitch	Roll	Yaw
0.06737	0.02906	-0.02588

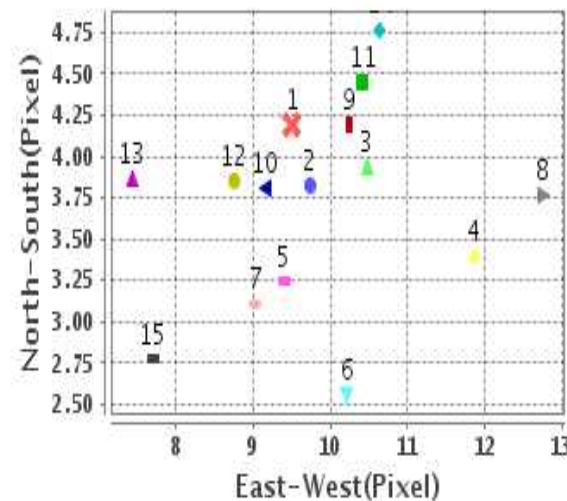
Reference Used

Sensor	Resolution	Projection
ETM	500.00	GGP

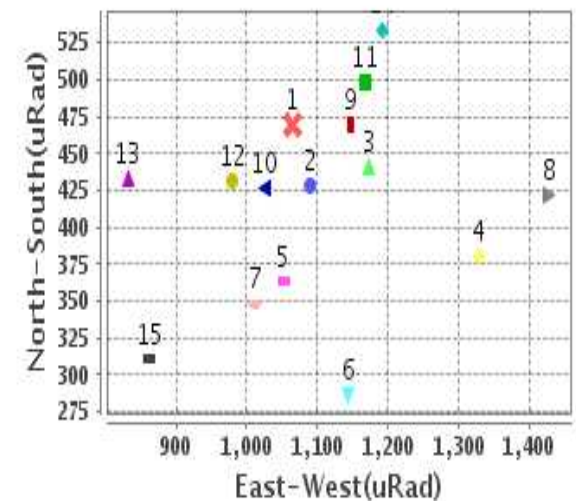
Radial Error (in IR Pixels)

Mean	11.994
Min	8.933
Max	15.150
CE90	14.354

Location Error For GCPs(Pixel)



Location Error For GCPs(uRad)



Detailed Product Information

Ancillary Info

Satellite	INSAT-3DR	Generation Date	16-02-19
Sensor	IMG	DQE Date	18-02-2019
PassType	NONE	Aquisition Date	16-02-19
Imaging Mode	FULL_FRAME	Aquisition Time(GMT)	06:15
Sat Altitude(m)	3.6E7	Nominal Altitude(Km)	3.6E7
Station	BES	Predicted Altitude(Km)	-999.99
Sat Location(deg)	-999.99 E	Nominal Center Lat(deg)	0.0
Format	hdf5-1.8.8	Nominal Center Lon(deg)	74.0
LvlOfProcessing	STANDARD	Predicted Center Lat(deg)	-999.99
DP JobId	3RIMG_16FEB20	Predicted Center Lon(deg)	-999.99
ProductCode	NONE		
Field View(deg)	18.006		

Projection Parameters

Projection	None
Ellipsoid	WGS_84
Datum	WGS_84
Zone	NotAvail
Semi_Major_Axis(Km)	6378.14
Semi_Minor_Axis(Km)	6356.75
Standard_Parallel1(deg)	-999.99
Standard_Parallel2(deg)	-999.99
Projection_Origin_Lon(deg)	-999.99
Projection_Origin_Lat(deg)	-999.99
Projection_False_Easting(Km)	-999.99
Projection_False_Northing(Km)	-999.99

Scene Center Desc

Centre Lat(deg)	-0.0070
Center Lon(deg)	74.053
Centre Roll(deg)	-999.0
Centre Pitch(deg)	-999.0
Center Yaw(deg)	-999.0
SunElevation(deg)	-999.99
SunAzimuth(deg)	-999.99
SatElevation(deg)	-999.99
SatAzimuth(deg)	-999.99

Scene Corner Desc

NW_Lat(deg)	81.244
NW_Lon(deg)	-7.118
SW_Lat(deg)	-81.258
SW_Lon(deg)	-7.118
NE_Lat(deg)	81.244
NE_Lon(deg)	155.224
SE_Lat(deg)	-81.258
SE_Lon(deg)	155.224

Band Wise Details

	Res_AL(Km)	Res_AX(Km)	Image Height	Image Width
MIR	4.0	4.0	2816	2805
SWIR	1.0	1.0	11264	11220
TIR1	4.0	4.0	2816	2805
TIR2	4.0	4.0	2816	2805
VIS	1.0	1.0	11264	11220
WV	8.0	8.0	1408	1402

GDQE Computation Base

Projection	MER	Wildpoint Rejection Threshold	2.60	SemiMajorAxis(m)	6378137.00	Mode Of Computation	grid
Ellipsoid	WGS_84		-sigma	SemiMinorAxis(m)	6356752.31	Used Reference Type	REFINSREF
Datum	WGS_84	Unit	meters	Standardparallel1(deg)	17.0		
Zone	Not Applicable			Standardparallel2(deg)	17.0		

* -999.99 : Not Applicable/Not Available

References

JobId : 3RIMG16FEB20190615L1BDQE

(-999.99 - Not Available/Not Computed)

Ref.No	Source	File Name	Resolution (m)	Projection
1	ETM	world_Band1.img	500.0	GGP

Location Accuracy

GCP Distribution Statistics

Image Width (pixels) : 2805 Image Height (pixels) : 2816 No of GCPs : 16

	Mean	StdDev	Min	Max	Coverage(in %)
GCP Scan	998.4	138.1	766.5	1198.50	15.34 (N-S)
GCP Pix	1266.6	384.5	632.5	1921.75	45.96 (E-W)

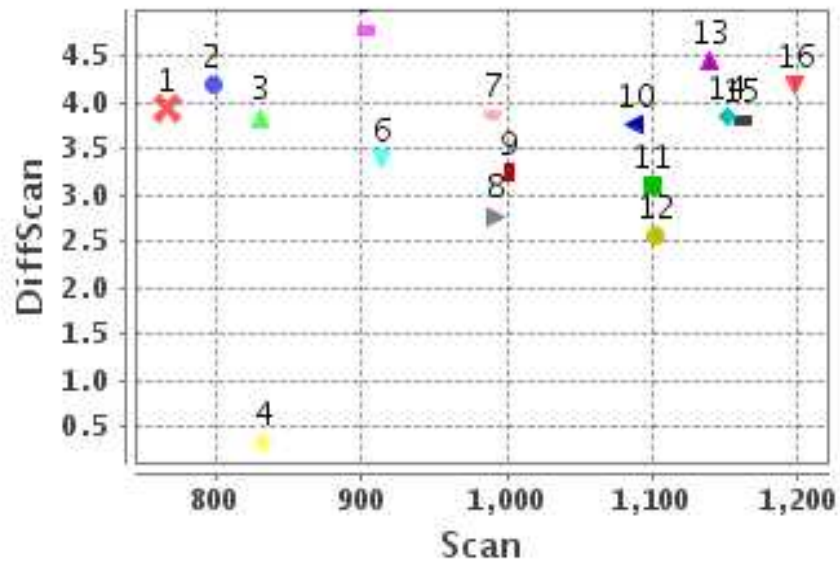
Identified Control Point details : (Differences are Reference - Product)

No	Scan	Pix	DiffScan (line)	DiffPix (pixel)	DifLat (Km)	Dir	DifLon (Km)	Dir	Status
1	798.2	1022.8	4.2	9.51	21.705	S	49.170	E	Accepted
2	831.2	1048.5	3.8	9.73	20.440	S	47.716	E	Accepted
3	766.5	1220.0	3.9	10.48	21.907	S	46.999	E	Accepted
4	914.0	988.2	3.4	11.86	16.326	S	55.047	E	Accepted
5	1002.2	845.0	3.2	9.40	15.357	S	44.018	E	Accepted
6	1102.8	632.5	2.6	10.21	14.320	S	55.616	E	Accepted
7	1100.2	805.2	3.1	9.04	14.542	S	43.475	E	Accepted
8	1088.2	866.0	3.8	12.75	17.407	S	58.045	E	Accepted
9	832.8	1275.0	0.3	8.81	6.127	S	37.530	E	Rejected
10	1198.5	1498.0	4.2	10.25	17.549	S	39.782	E	Accepted
11	1161.8	1536.0	3.8	9.15	18.190	S	35.796	E	Accepted
12	1139.8	1561.2	4.4	10.42	21.278	S	41.493	E	Accepted
13	1151.5	1572.2	3.9	8.75	16.553	S	34.606	E	Accepted

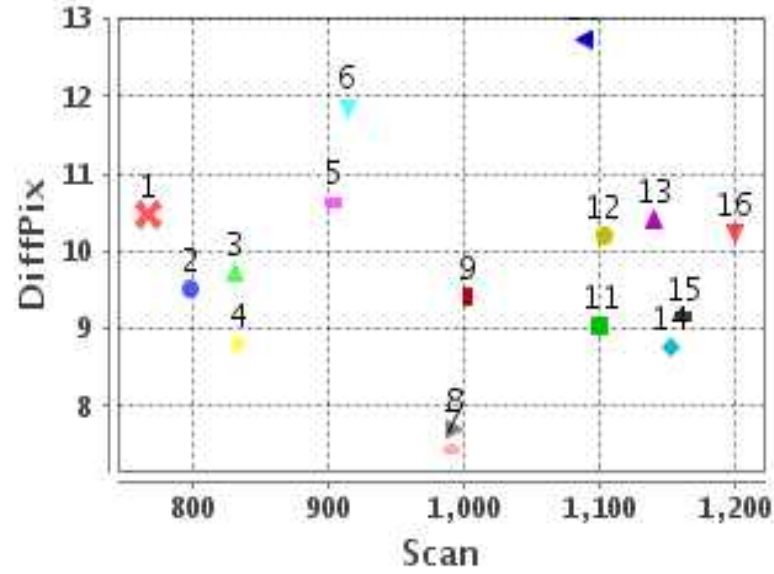
Identified Control Point details : (Differences are Reference - Product)

No	Scan	Pix	DiffScan (line)	DiffPix (pixel)	DifLat (Km)	Dir	DifLon (Km)	Dir	Status
14	990.5	1582.2	3.9	7.43	18.449	S	30.599	E	Accepted
15	903.5	1891.2	4.8	10.64	22.546	S	46.182	E	Accepted
16	992.5	1921.8	2.8	7.70	13.318	S	36.092	E	Accepted

Error(Pixels) Vs. GCPScan



Error(Pixels) Vs. GCPScan



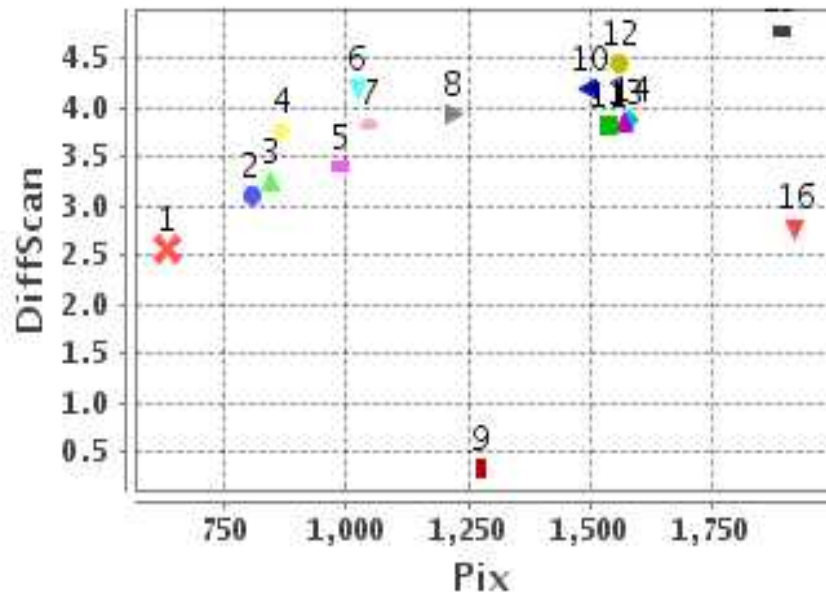
Number Of Points

North	0
South	15
East	15
West	0

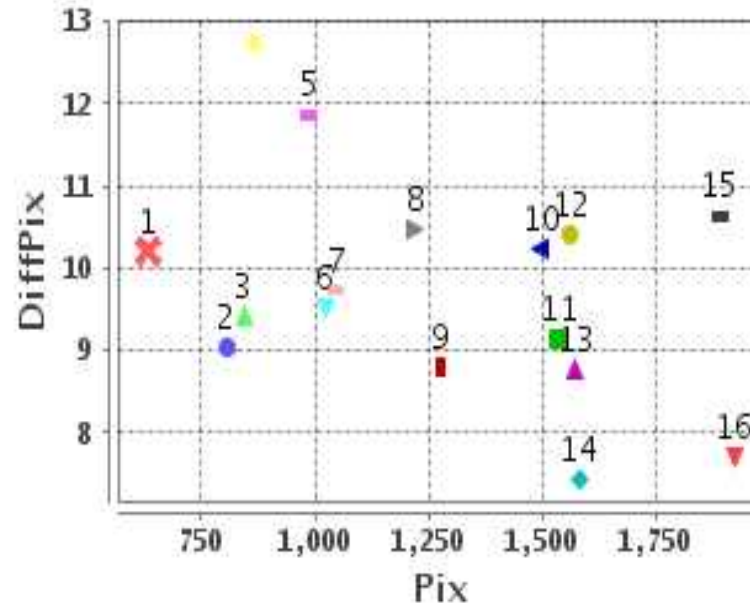
Radial Error (Km)

Mean	11.994
Min	8.933
Max	15.150
CE90	14.354

Error(Pixels) Vs. GCPPix



Error(Pixels) Vs. GCPPix



Location Accuracy

	Mean	StdDev	RMS	Dir	* MinRMS	* MaxRMS
Along(Km)	-4.498	0.726	4.556	S	4.469	4.632
Across (Km)	11.077	1.968	11.251	E	10.981	11.465

Block-Wise Geo location Error Statistics

Location Accuracy,Scale,ID

Scan Range-0-937; Pix Range-0-934 Number of GCPs -999 Location Error(Km) Along(Mean,Dir) -999.99 NotAvail Across(Mean,Dir) -999.99 NotAvail Scale(Km) Average Scale (Mean,%Variation) -999.99 -999.9 Internal Distortion(Pixel) Along(Mean,Stddev) -999.99 -999.99 Across(Mean,Stddev) -999.99 -999.99	Scan Range-0-937; Pix Range-934-1869 Number of GCPs 4 Location Error(Km) Along(Mean,Dir) -20.09 S Across(Mean,Dir) 49.73 E Scale(Km) Average Scale (Mean,%Variation) 4.40 9.97 Internal Distortion(Pixel) Along(Mean,Stddev) 0.14 0.33 Across(Mean,Stddev) 1.95 0.42	Scan Range-0-937; Pix Range-1869-2805 Number of GCPs 1 Location Error(Km) Along(Mean,Dir) -22.55 S Across(Mean,Dir) 46.18 E Scale(Km) Average Scale (Mean,%Variation) -999.99 -999.9 Internal Distortion(Pixel) Along(Mean,Stddev) -999.99 -999.99 Across(Mean,Stddev) -999.99 -999.99
Scan Range-937-1876; Pix Range-0-934 Number of GCPs 4 Location Error(Km) Along(Mean,Dir) -15.405 S Across(Mean,Dir) 50.29 E Scale(Km) Average Scale (Mean,%Variation) 4.45 11.35 Internal Distortion(Pixel) Along(Mean,Stddev) 0.09 0.49 Across(Mean,Stddev) -0.18 1.67	Scan Range-937-1876; Pix Range-934-1869 Number of GCPs 5 Location Error(Km) Along(Mean,Dir) -18.402 S Across(Mean,Dir) 36.46 E Scale(Km) Average Scale (Mean,%Variation) 3.96 0.97 Internal Distortion(Pixel) Along(Mean,Stddev) -0.22 0.26 Across(Mean,Stddev) 1.31 1.07	Scan Range-937-1876; Pix Range-1869-2805 Number of GCPs 1 Location Error(Km) Along(Mean,Dir) -13.32 S Across(Mean,Dir) 36.09 E Scale(Km) Average Scale (Mean,%Variation) -999.99 -999.9 Internal Distortion(Pixel) Along(Mean,Stddev) -999.99 -999.99 Across(Mean,Stddev) -999.99 -999.99
Scan Range-1876-2816; Pix Range-0-934 Number of GCPs -999 Location Error(Km) Along(Mean,Dir) -999.99 NotAvail Across(Mean,Dir) -999.99 NotAvail Scale(Km) Average Scale (Mean,%Variation) -999.99 -999.9 Internal Distortion(Pixel) Along(Mean,Stddev) -999.99 -999.99 Across(Mean,Stddev) -999.99 -999.99	Scan Range-1876-2816; Pix Range-937-1869 Number of GCPs -999 Location Error(Km) Along(Mean,Dir) -999.99 NotAvail Across(Mean,Dir) -999.99 NotAvail Scale(Km) Average Scale (Mean,%Variation) -999.99 -999.9 Internal Distortion(Pixel) Along(Mean,Stddev) -999.99 -999.99 Across(Mean,Stddev) -999.99 -999.99	Scan Range-1876-2816; Pix Range-1869-2805 Number of GCPs -999 Location Error(Km) Along(Mean,Dir) -999.99 NotAvail Across(Mean,Dir) -999.99 NotAvail Scale(Km) Average Scale (Mean,%Variation) -999.99 -999.9 Internal Distortion(Pixel) Along(Mean,Stddev) -999.99 -999.99 Across(Mean,Stddev) -999.99 -999.99

*-999 : no gcp available

* -999.99 : values are not computed