

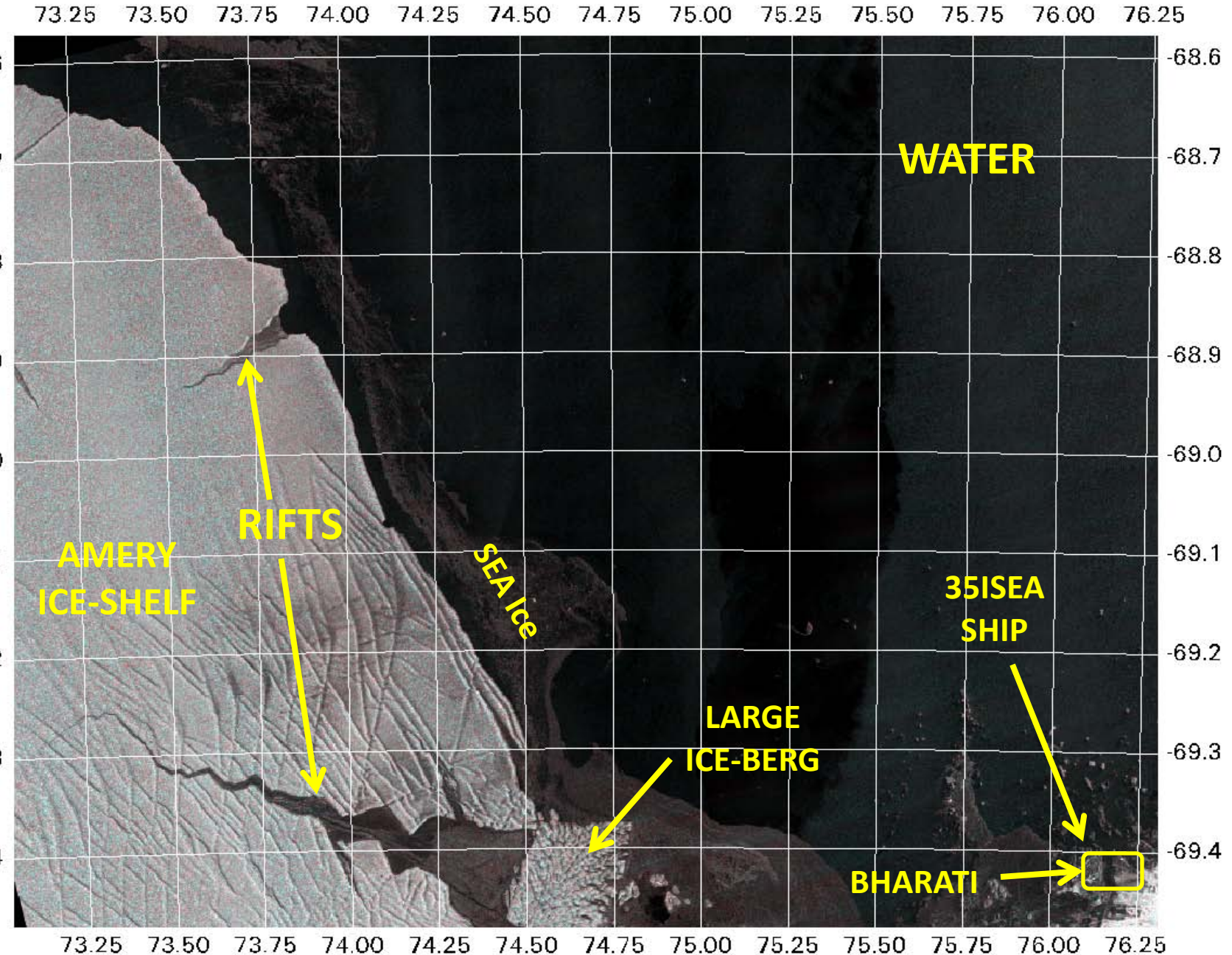
Sea Ice Advisory to 35th Antarctic Expedition

Dt. Feb 10, 2016

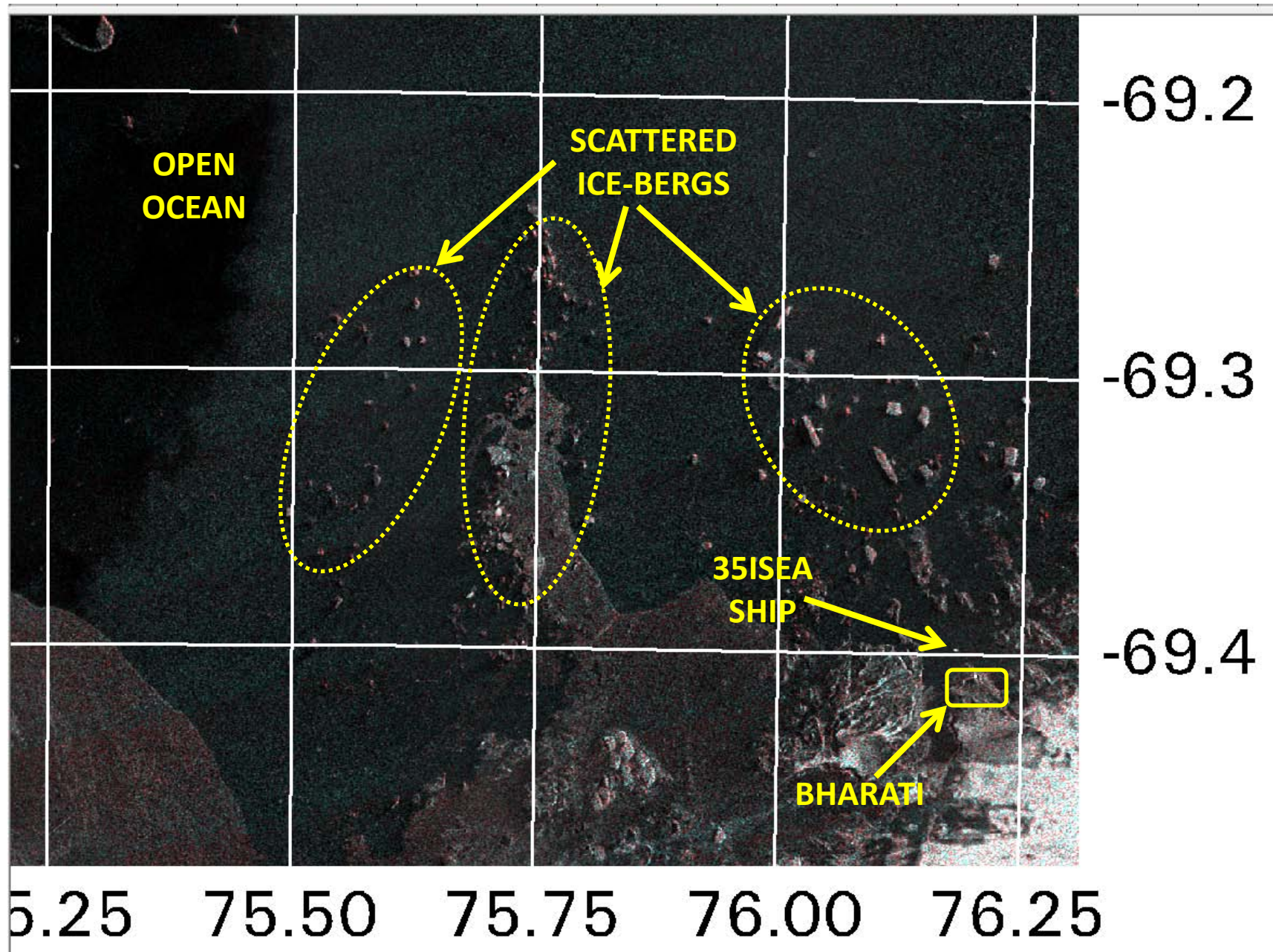
Status of Sea Ice Near Amery Ice-shelf

Satellite data analysis shows that scattered thin sea ice exists near the Antarctic coast between Bharati and Amery Ice-shelf. Scattered ice-bergs are also marked in the subsequent slides. 35th ISEA ship was located near Bharati as shown on Feb 08, 2016 image. Suggested anchoring location near the Amery Ice-shelf is also shown (68 55 S, 73 58 E). It is evident from the data analysis that ship may not face much resistance from sea ice for navigation.

BHARATI and AMERY Ice-shelf: RISAT-1 SAR CRS 08 Feb 2016

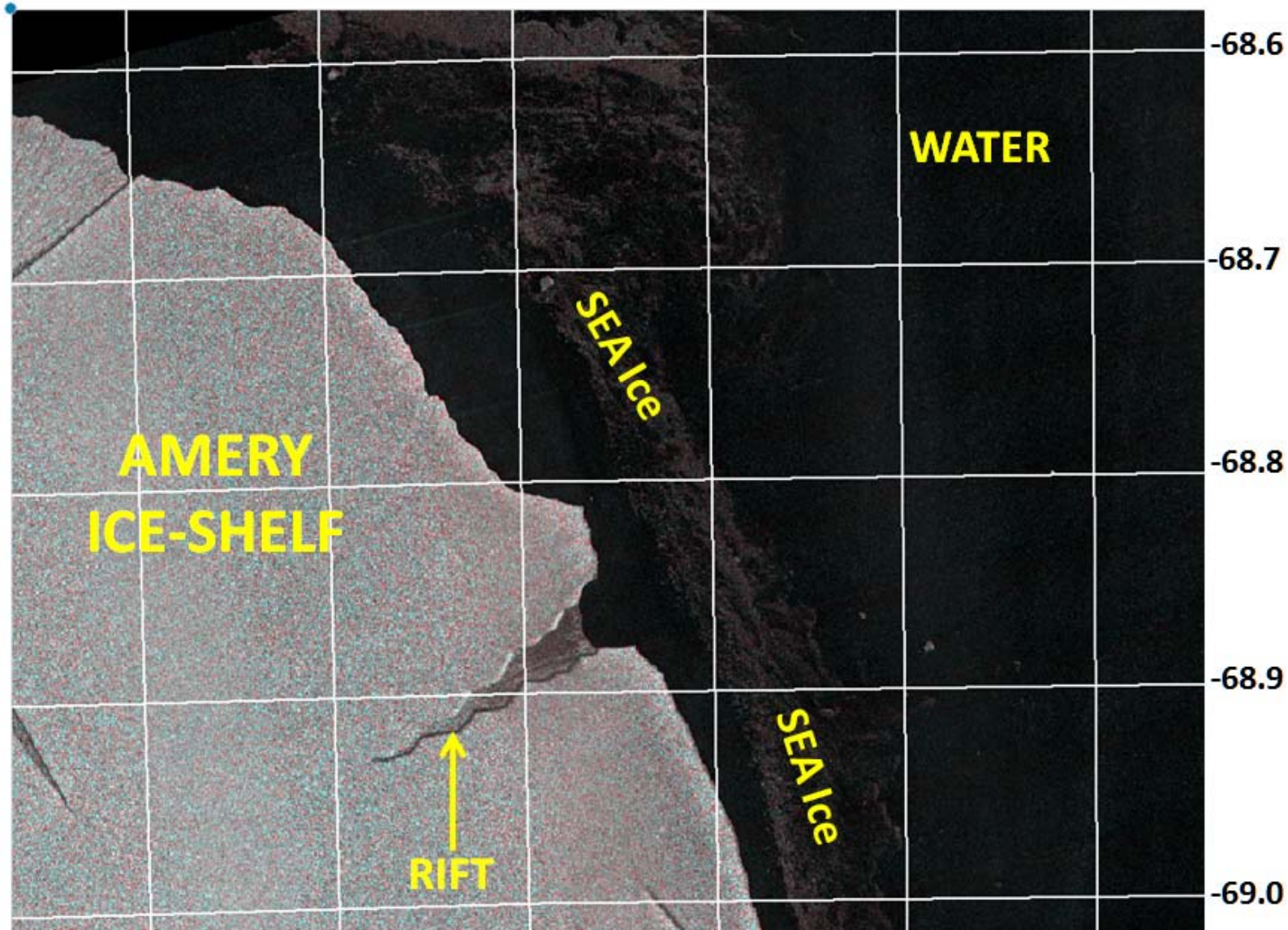


BHARATI and Surrounding Area: RISAT-1 SAR CRS 08 Feb 2016

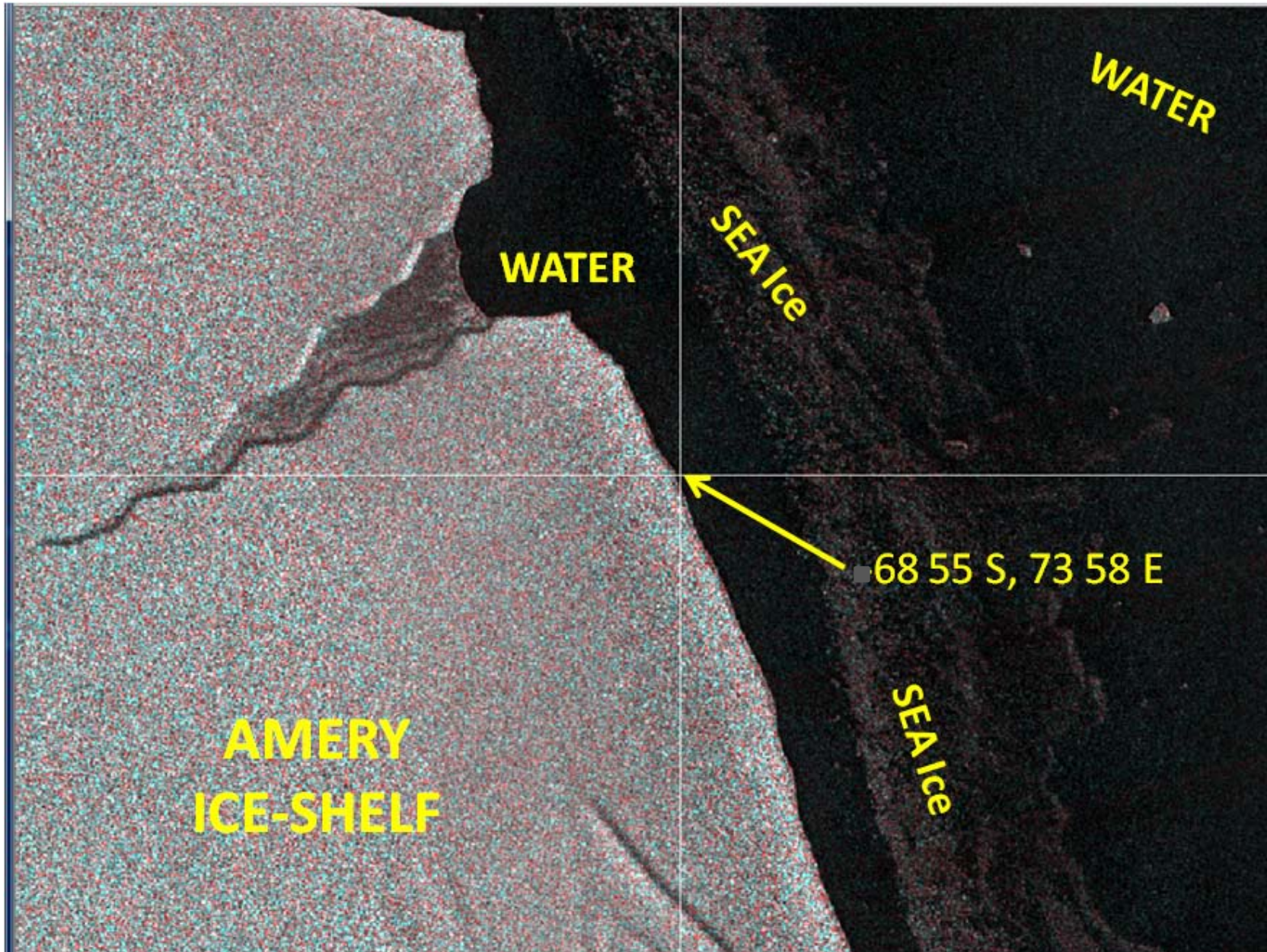


AMERY Ice-shelf Coast : RISAT-1 SAR CRS 08 Feb 2016

73.25 73.50 73.75 74.00 74.25 74.50



Suggested Anchoring Location near AMERY Ice-shelf



BHARATI and Surrounding Area: RISAT-1 SAR CRS 08 Feb 2016

