

Dt. Jan 26, 2016

Status of Sea Ice & Icebergs in India Bay

The analysis of multi-date Indian satellites data, MODIS mosaic images, and sea ice concentration products over India Bay coast of Antarctica shows that sea ice and fast ice have fast reduced Jan 15th onwards. The fast ice extent in India Bay has almost reduced to nil. It is good news for 35th ISEA ship navigation. Two of the three icebergs which were first detected in October 2015 in this region, got drifted away to new locations are shown in subsequent pages.

Large Scale Icebergs & Sea Ice Drift over the Antarctic Coast Near India Bay in 3rd Week of January 2016

The Antarctic coast around India Bay, is monitored through Indian as well as foreign satellites data/data products including RISAT-1 SAR, Resourcesat-2 AWiFS, LISS-III/IV, MODIS LANCE mosaic, and AMSR2 ASI sea ice products (up to Jan 21, 2016).

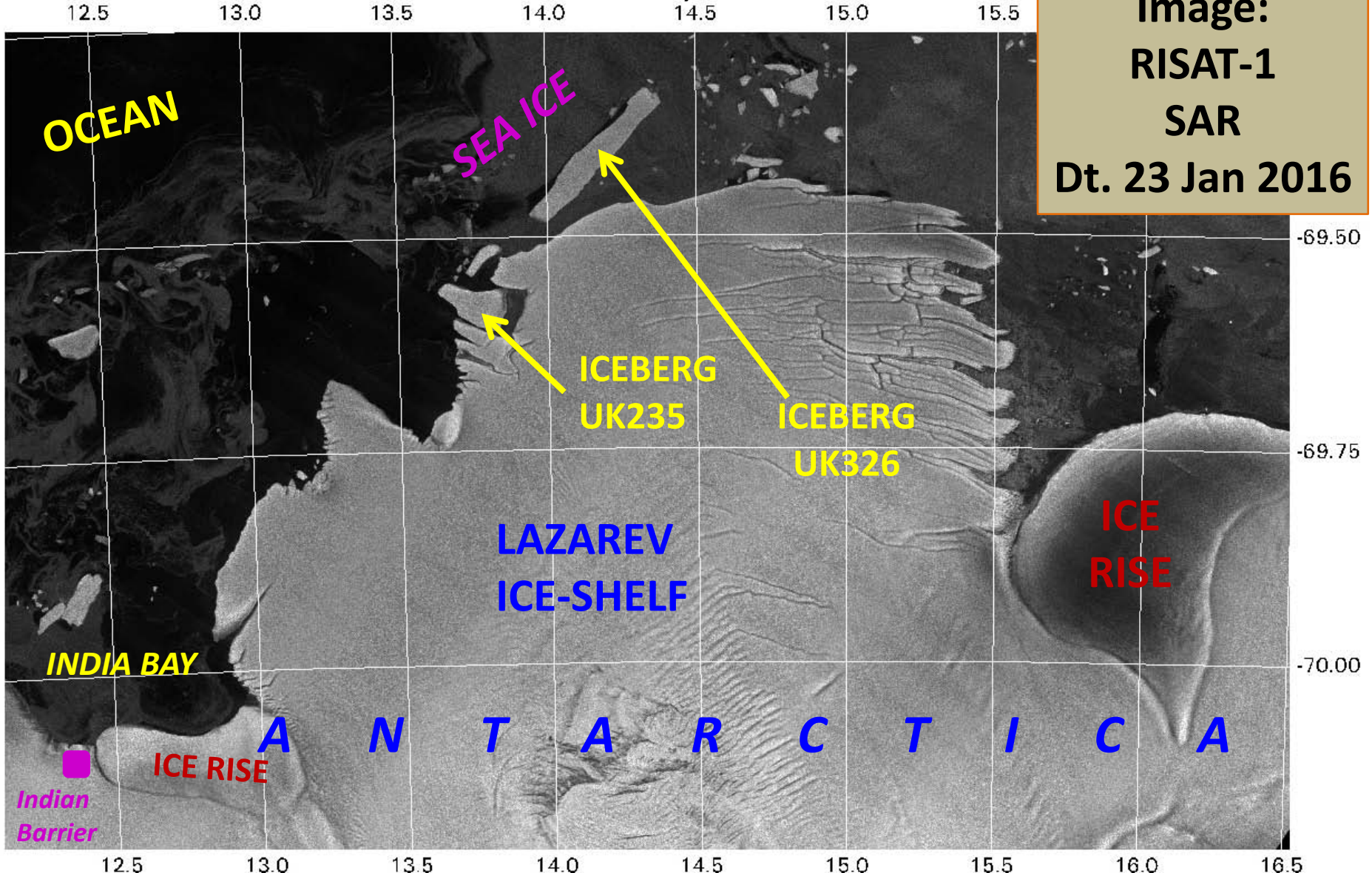
A large scale drift of sea ice and icebergs has been observed in the study area during third week of January 2016. The fast ice extent in India Bay has reduced to almost NIL by January 23rd.

The iceberg UK326 (22km x 3km size), which was first detected on August 23, 2015 at location 69.3 South, 15.5 East, recently got drifted by more than 56km to a new location 69.4 South, 14.1 East on January 23, 2016. It was almost stationary till January 14, 2016.

STATUS OF SEA ICE & ICEBERGS NEAR INDIA BAY (The Antarctic Coast)

Jan 23, 2016

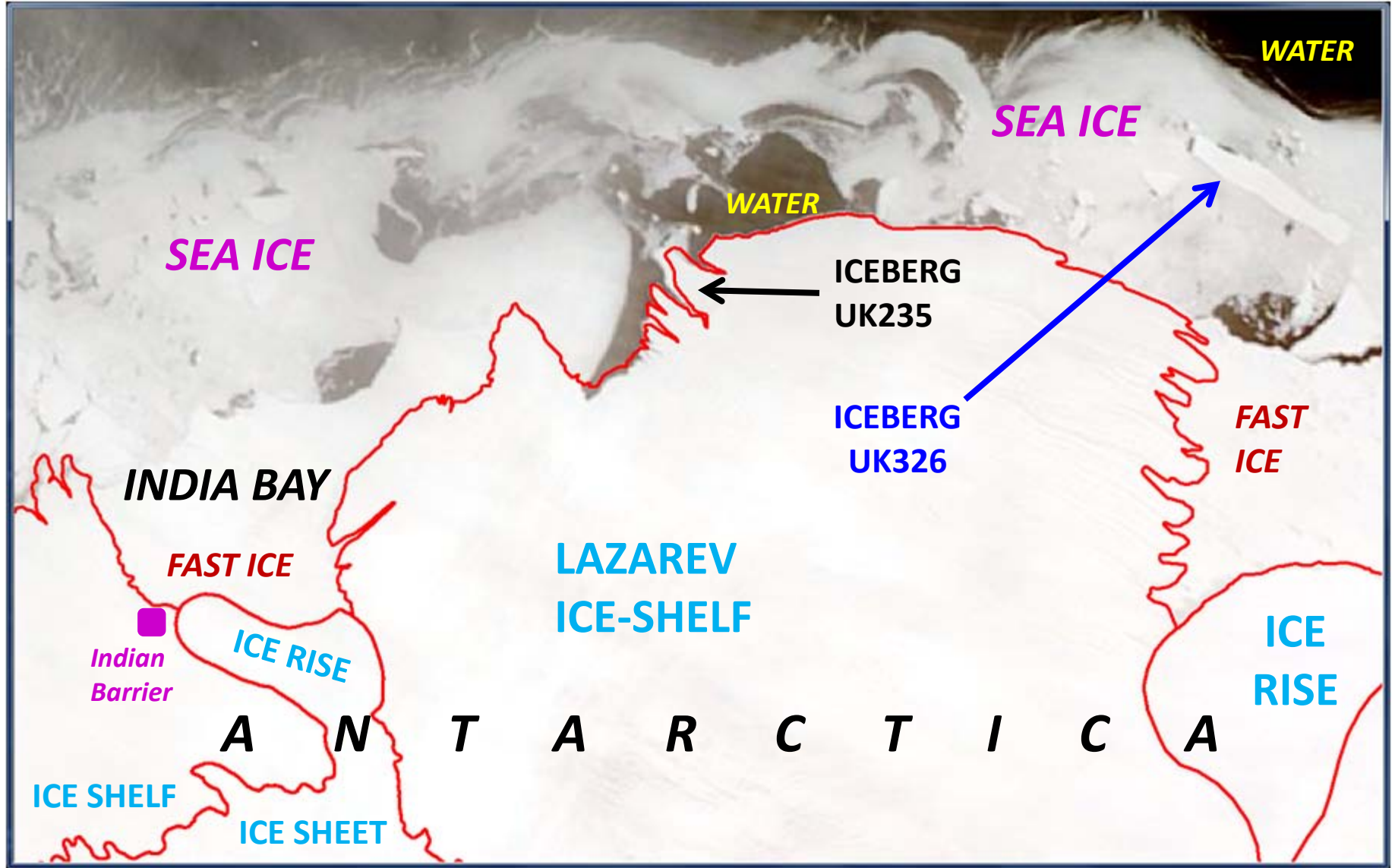
Image:
RISAT-1
SAR
Dt. 23 Jan 2016



CSD / GHCAAG / EPSA
SAC (ISRO), Ahmedabad

STATUS OF SEA ICE & ICEBERGS NEAR INDIA BAY (The Antarctic Coast)

Jan 14, 2016

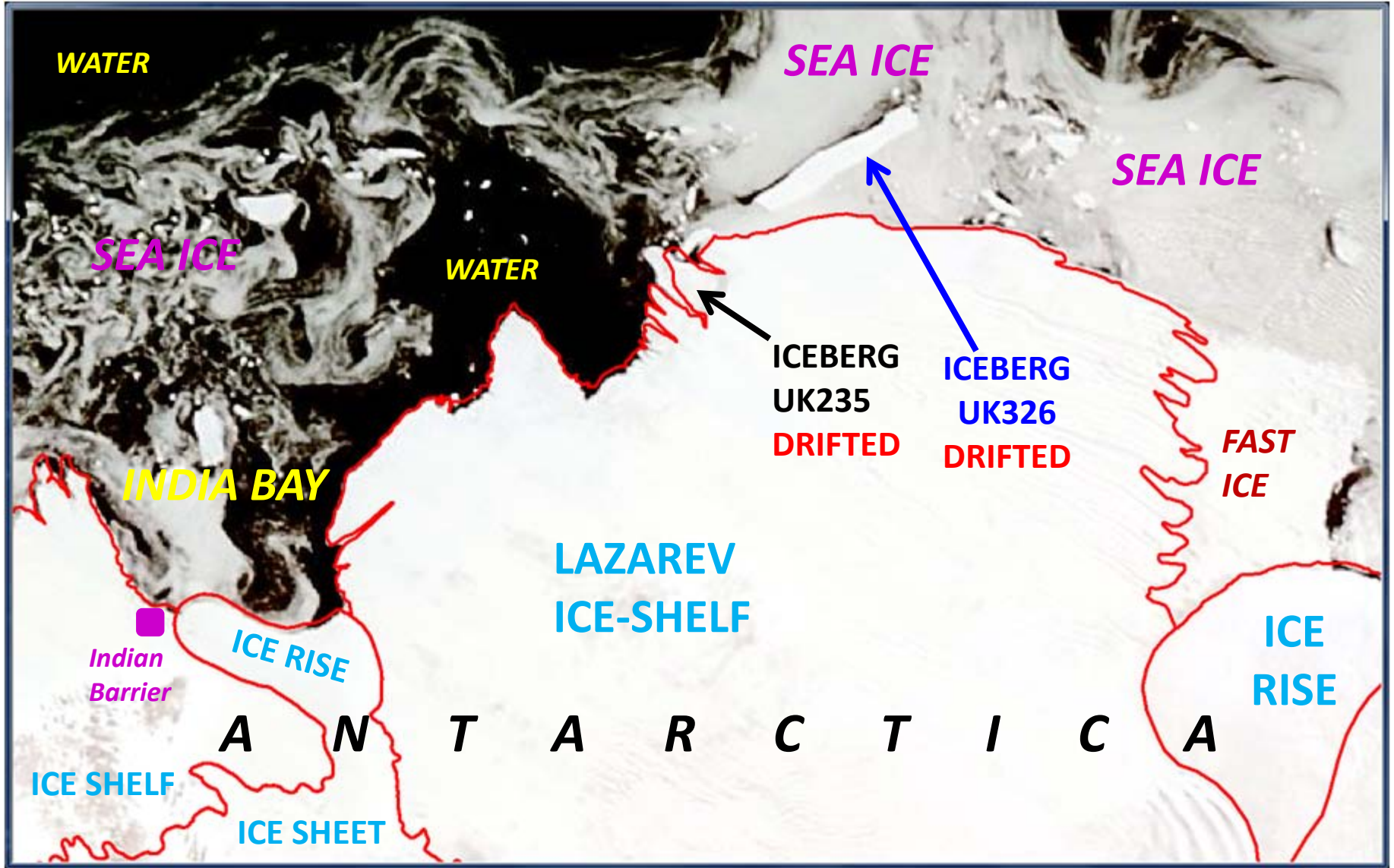


MODIS TERRA 2016014 (14 Jan 2016)

CSD / GHCAG / EPSA
SAC (ISRO), Ahmedabad

STATUS OF SEA ICE & ICEBERGS NEAR INDIA BAY (The Antarctic Coast)

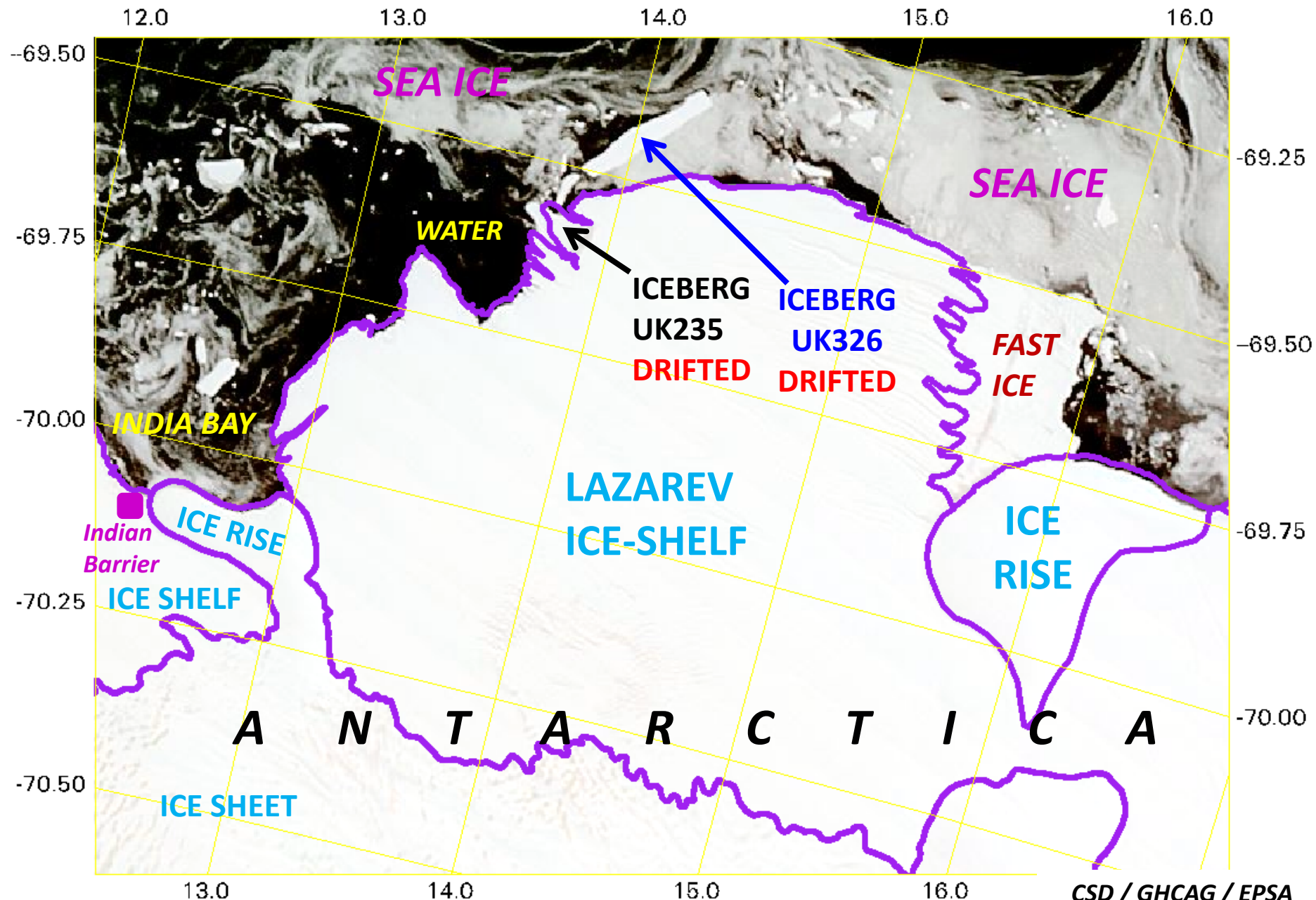
Jan 23, 2016



MODIS TERRA 2016023 (23 Jan 2016)

CSD / GHCA / EPSA
SAC (ISRO), Ahmedabad

STATUS OF SEA ICE & ICEBERGS NEAR INDIA BAY (The Antarctic Coast): Jan 25, 2016



MODIS TERRA 2016025 (25 Jan 2016)

CSD / GHCAAG / EPSA
SAC (ISRO), Ahmedabad