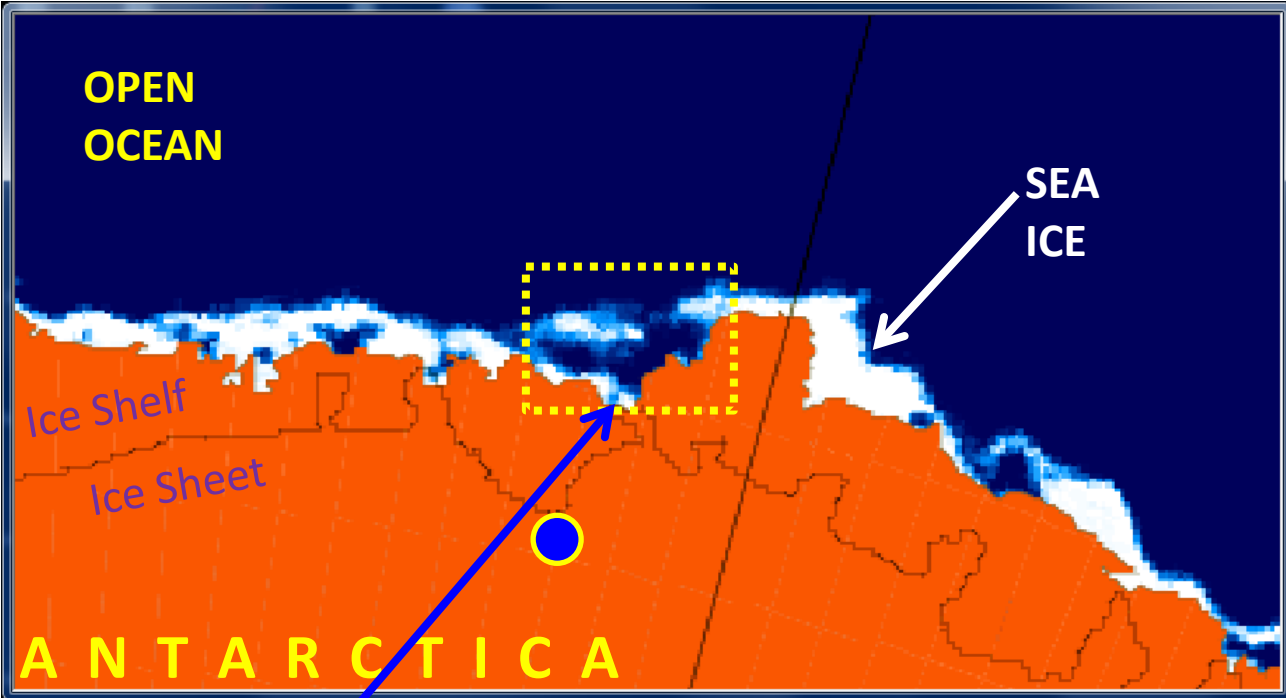


Dt. Jan 21, 2016

Status of Sea Ice in India Bay

The analysis of two years (2015 and 2016) multi-date sea ice concentration's daily variation from January 1st to January 20th shows that sea ice in India Bay has fast reduced between Jan 15th and Jan 20th this year compared to last year. Large reduction of fast ice extent on Jan 20 is shown in the next slide. It is a good news for 35th ISEA. Sea ice on Jan 15th and Jan 1st during 2016 & 2015 are shown in 3rd and 4th slides. The analysis is based on AMSR2 ASI sea ice concentration data product at 3.125km.

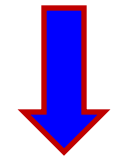


SEA ICE CONCENTRATION

20 Jan 2016



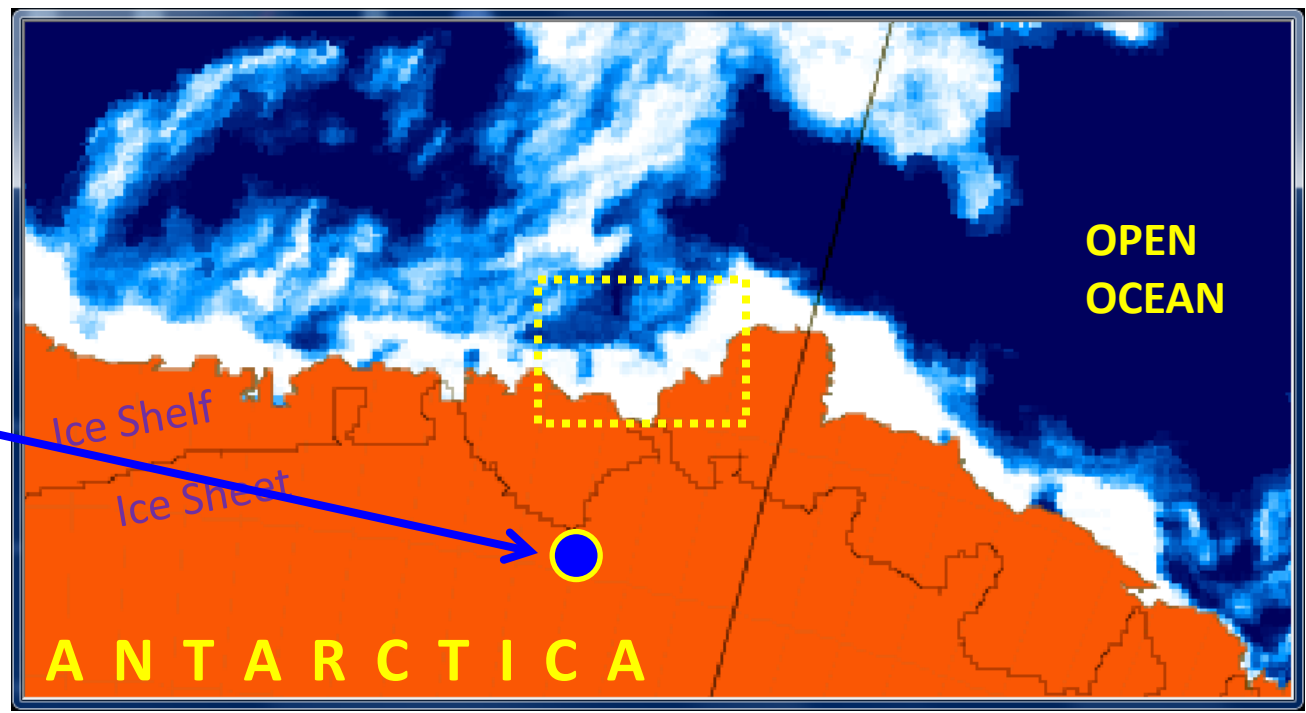
20 Jan 2015



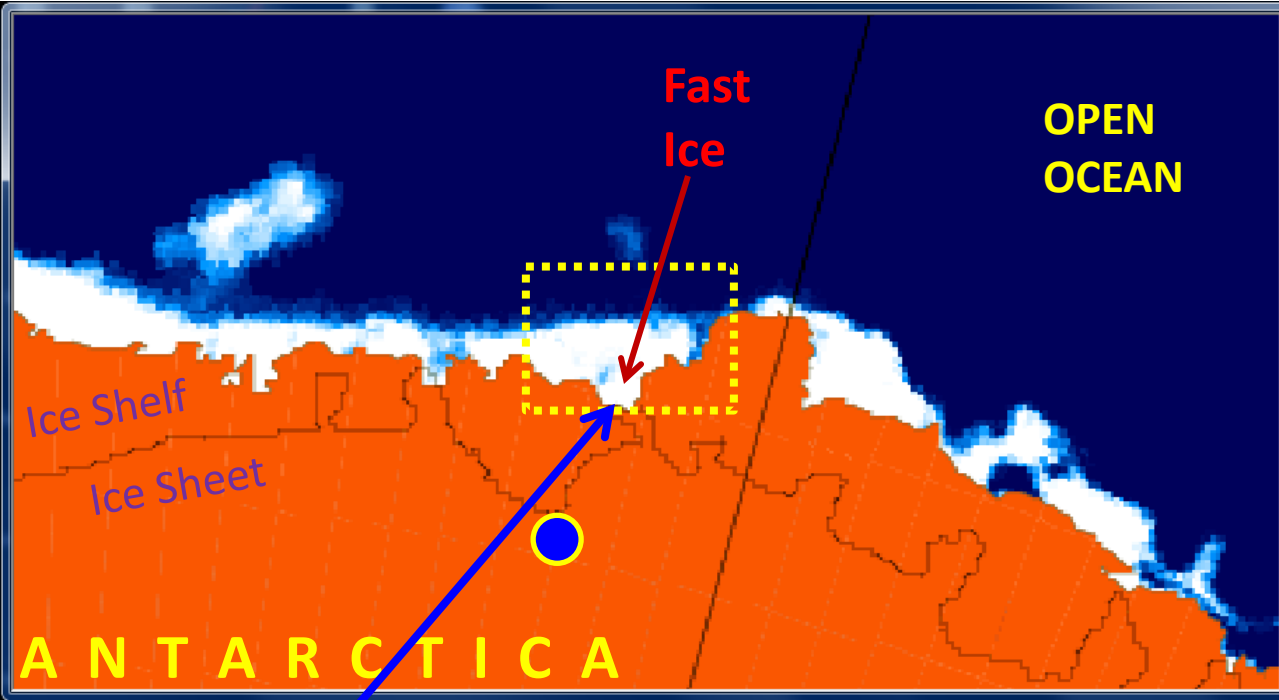
India Bay

MAITRI

SEA ICE IS SHOWN IN WHITE



SEA ICE CONCENTRATION



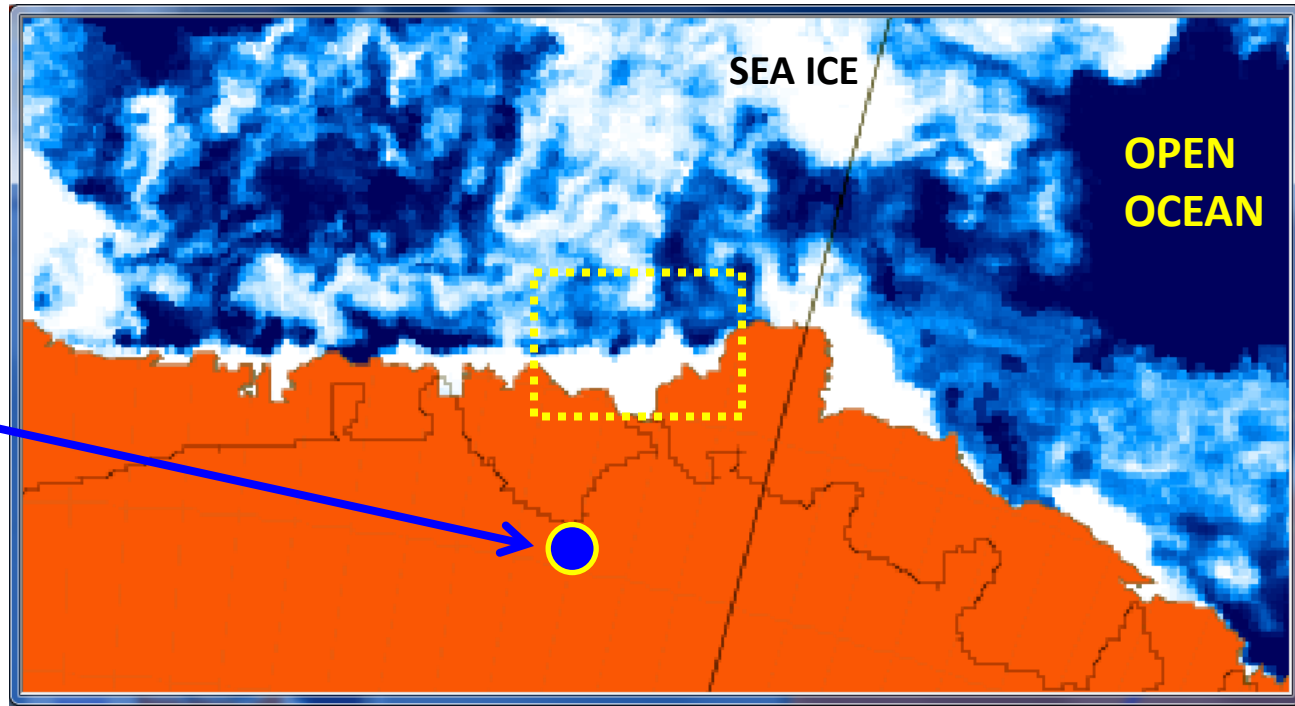
15 Jan 2016

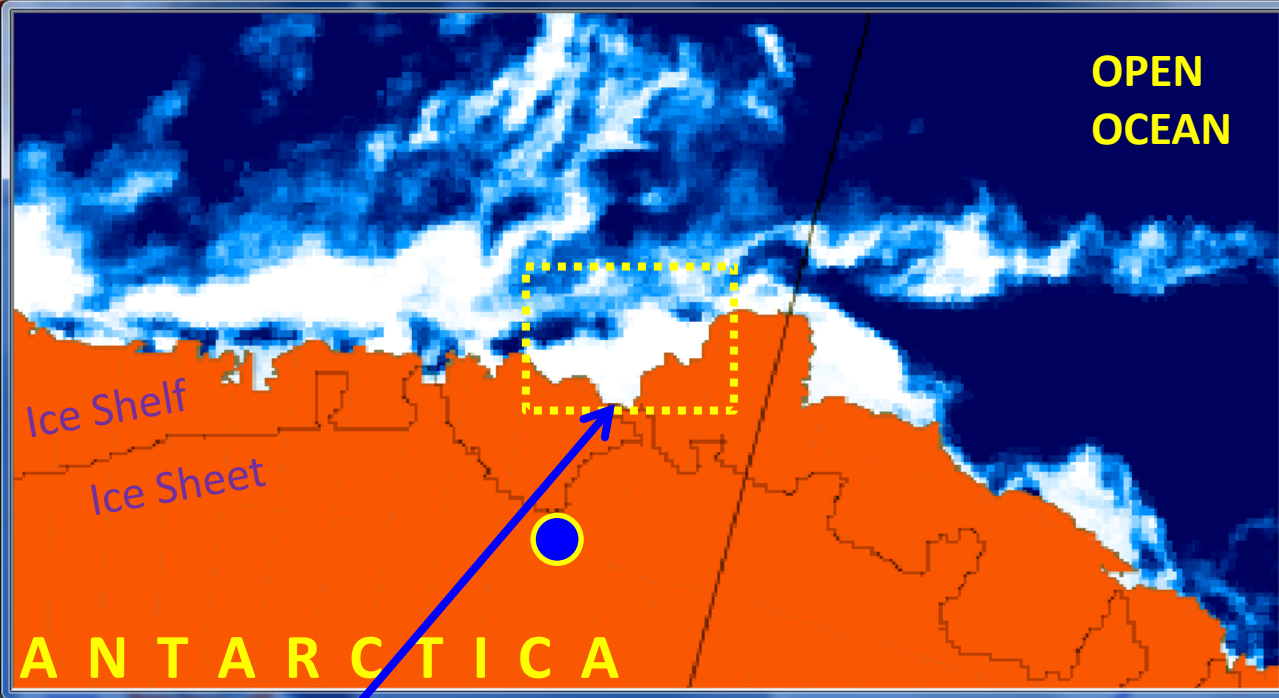
15 Jan 2015

India Bay

MAITRI

SEA ICE IS SHOWN IN WHITE



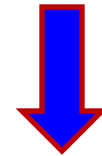


SEA ICE CONCENTRATION

01 Jan 2016



01 Jan 2015



India Bay

MAITRI

SEA ICE IS SHOWN IN WHITE

