

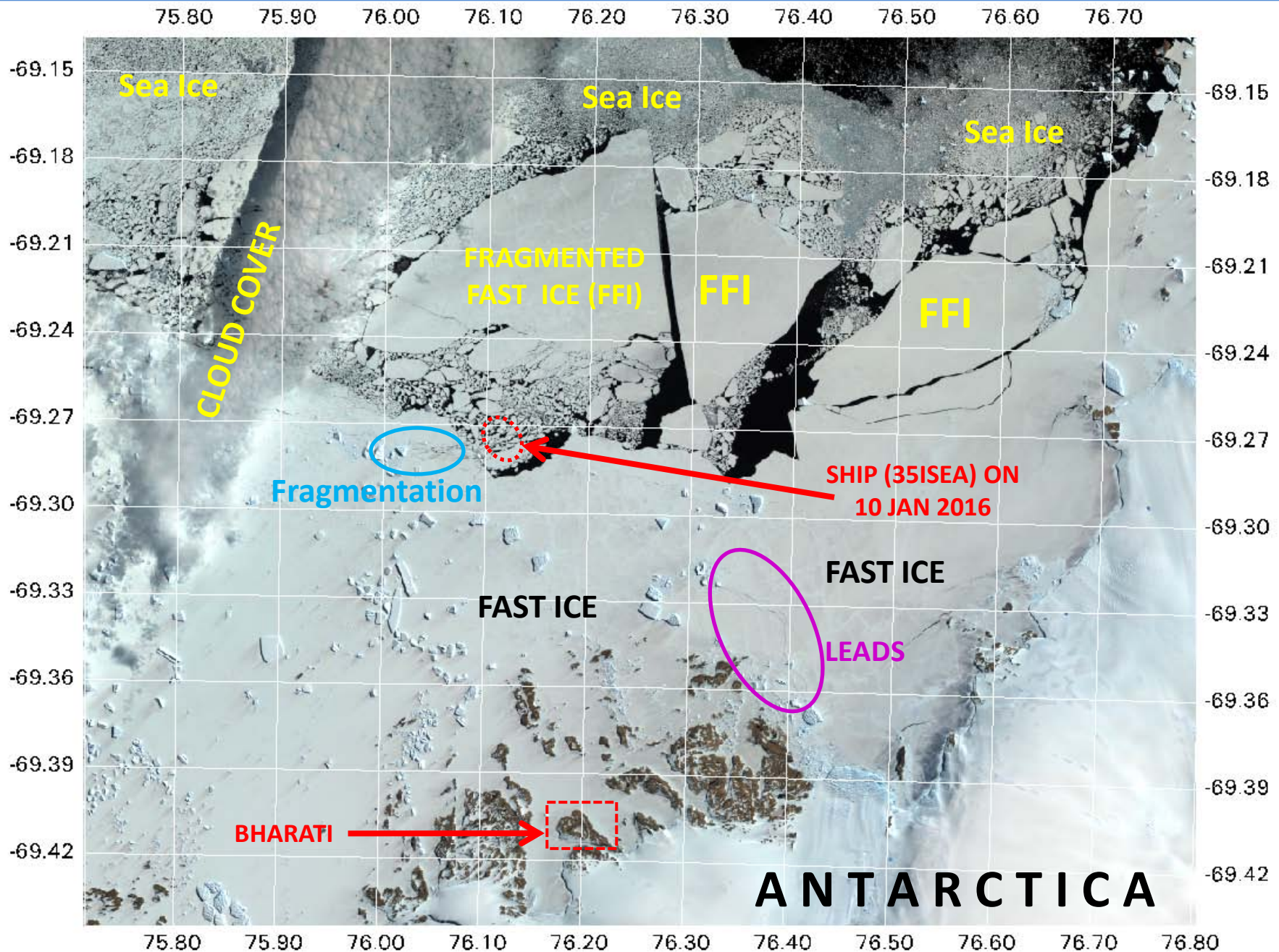
Sea Ice Advisory to 35th Antarctic Expedition

Dt. Jan 13, 2016

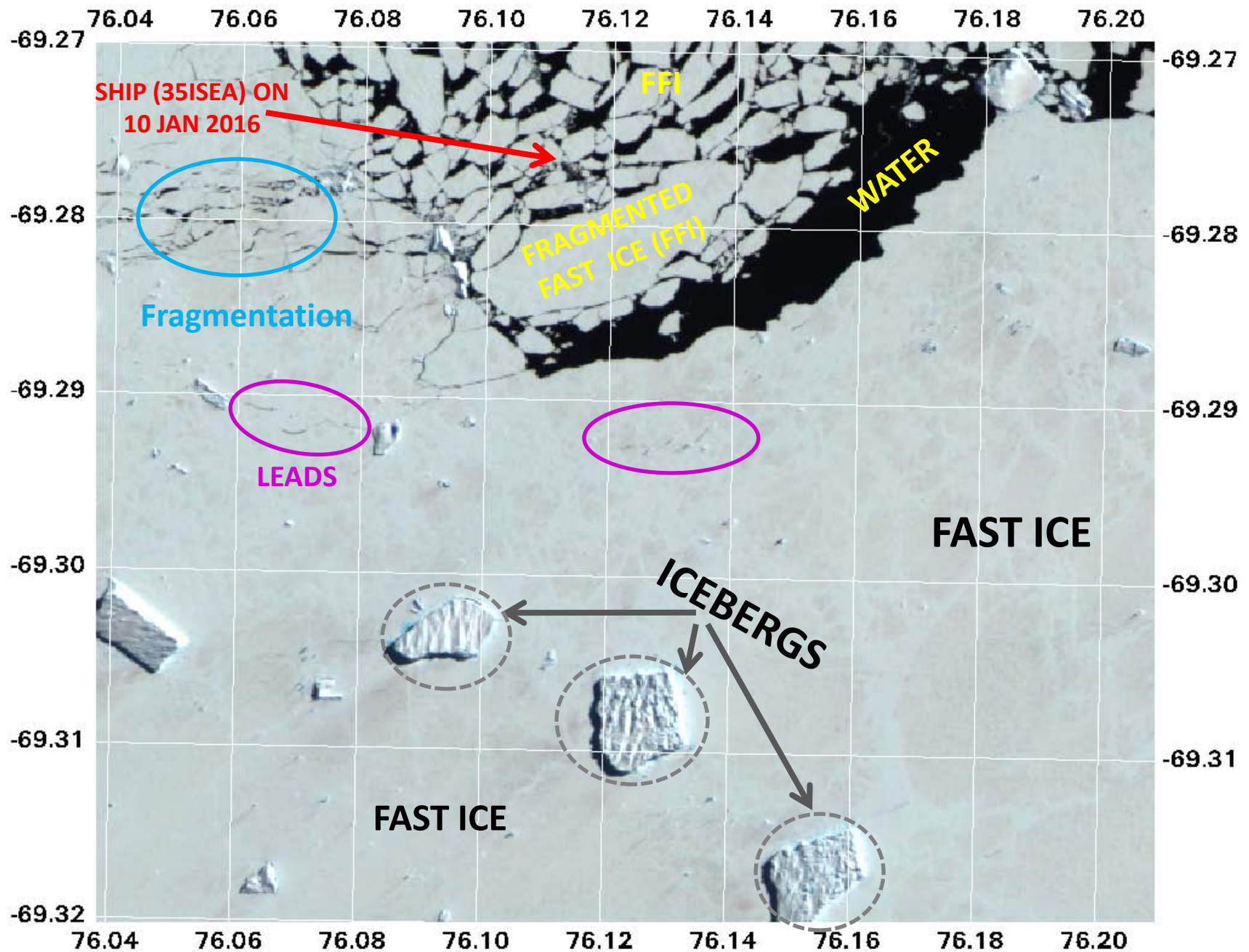
Highlights

- Indian satellite data analysis shows that the sea ice defragmentation is occurring at fast ice marginal zones over the Antarctic coast near Bharati. Ship was located 14km from Bharati on Jan 10, 2016.
- Formation of new leads and widening of previous leads has been observed over the fast ice area.
- Enlarged sections of images (Resourcesat-2 LISS-IV, Jan 10, 2016) showing defragmented fast ice, and leads are also provided.
- Overall scenario of sea ice status is presented in the following slides.

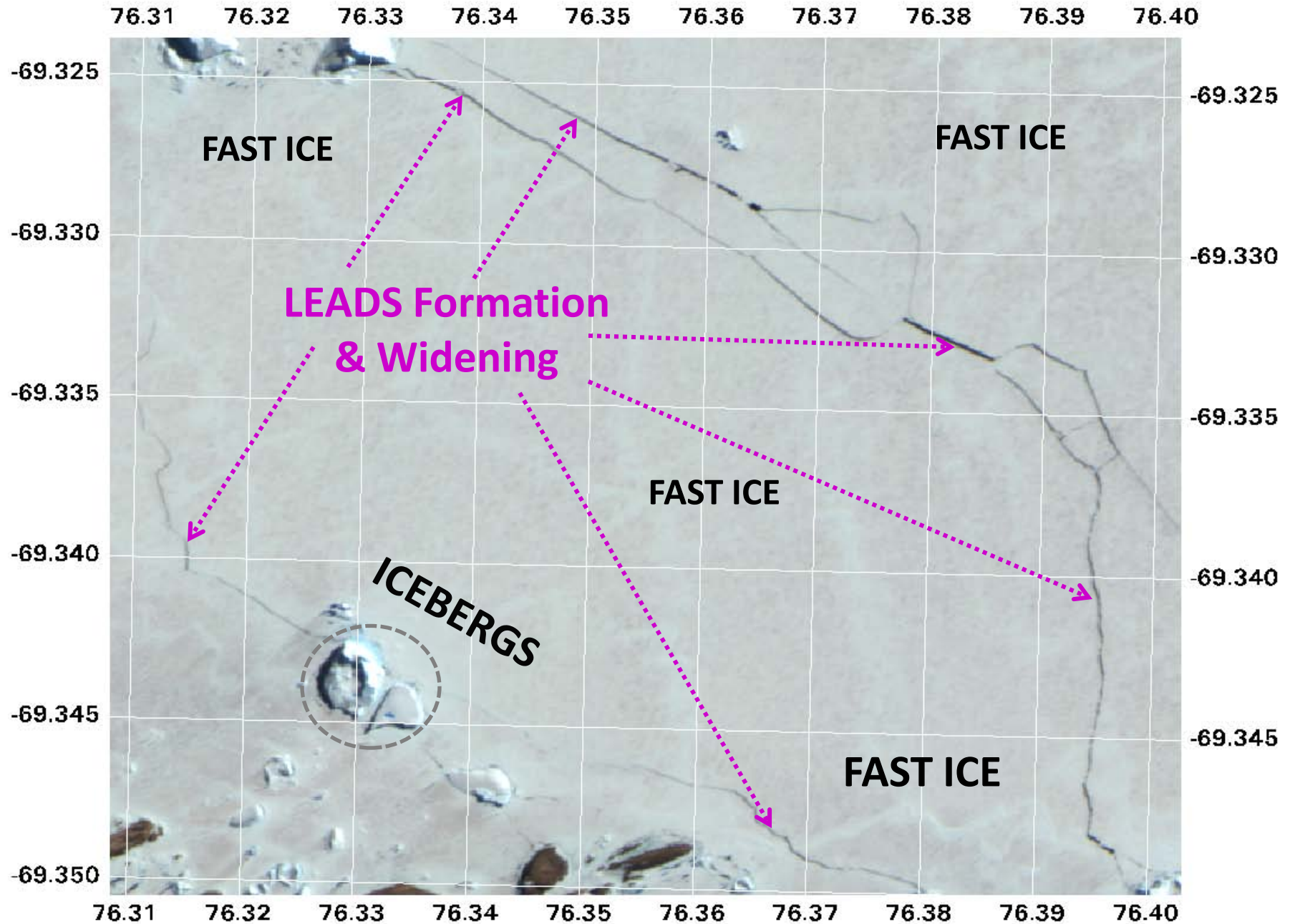
Fast Ice Status on Jan 10, 2016 (RS2 LISS-IV Data)



Fast Ice Status on Jan 10, 2016 (RS2 LISS-IV Data)



Fast Ice Status on Jan 10, 2016 (RS2 LISS-IV Data)



Fast Ice Status on Jan 10, 2016 (RS2 LISS-IV Data)

