

Atmospheric Motion Vectors from INSAT-3DR

Initial Products

Sample Wind Products from INSAT 3DR		
Cloud Motion Winds	➔	From Infrared (TIR1) channel
Water Vapor winds	➔	From Water Vapor (WV) channel
Visible winds	➔	From Visible (VIS) channel
High level winds	➔	From TIR1+WV channels
Low level winds	➔	From TIR1+VIS channels

All winds are valid at: 0614 UTC 20 September 2016

Operational AMVs are generated using 9 successive images, however, in INSAT-3DR, 9 continuous images are yet to be acquired.

These AMVs are generated using 5 successive satellite images viz. 0415, 0445, 0515, 0545 and 0614 UTC of 20 Sept. 2016



INSAT-3DR 20-SEP-2016 06:14 TIR1 IMG

CLOUD MOTION WIND

(1Kt = 0.5 m/s)

10 Kt

15 Kt

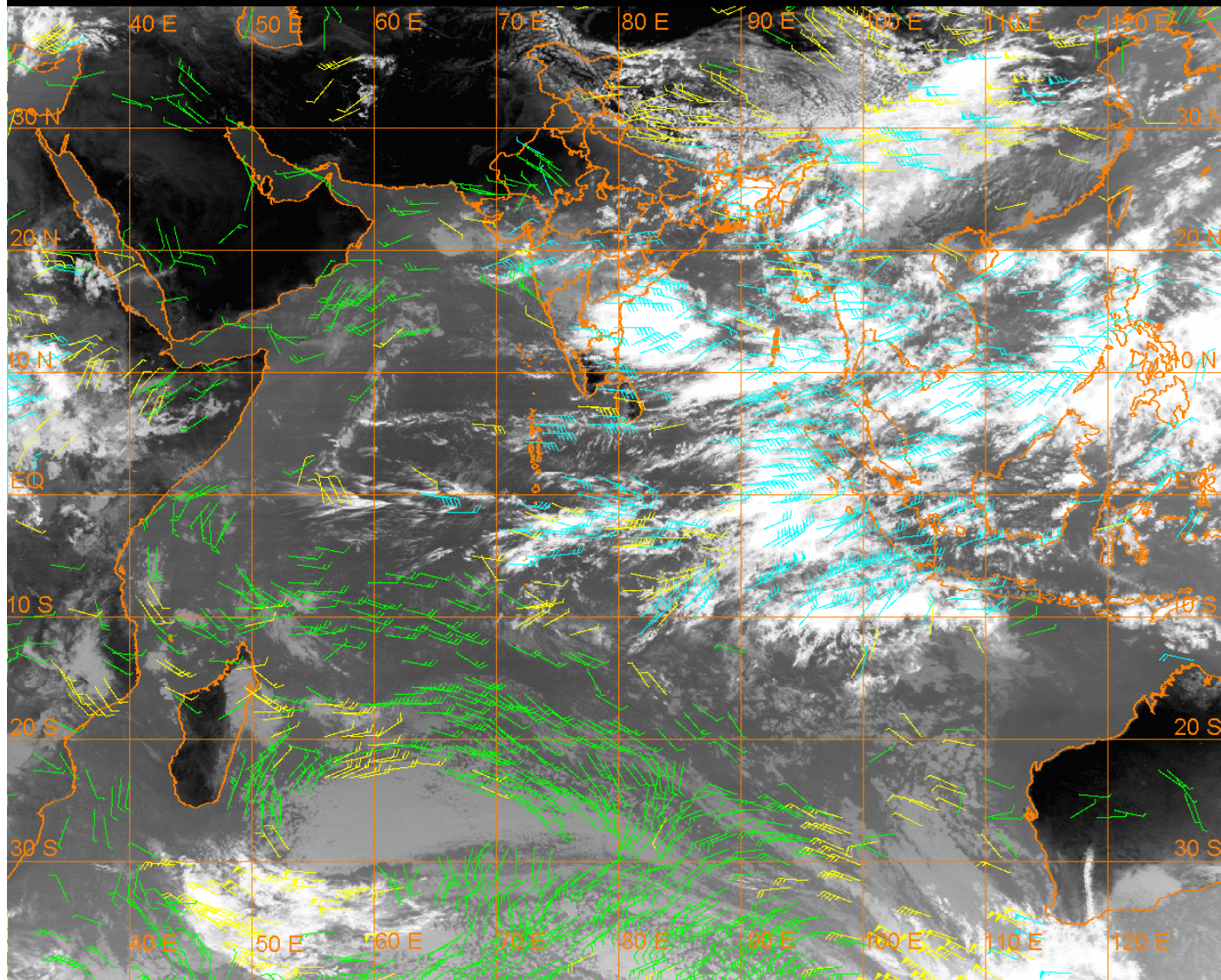
20 Kt

50 Kt

100-400 hPa

401-700 hPa

701-975 hPa





INSAT-3DR 20-SEP-2016 06:14 WV IMG

WATER VAPOUR WIND

(1Kt = 0.5 m/s)

10 Kt

15 Kt

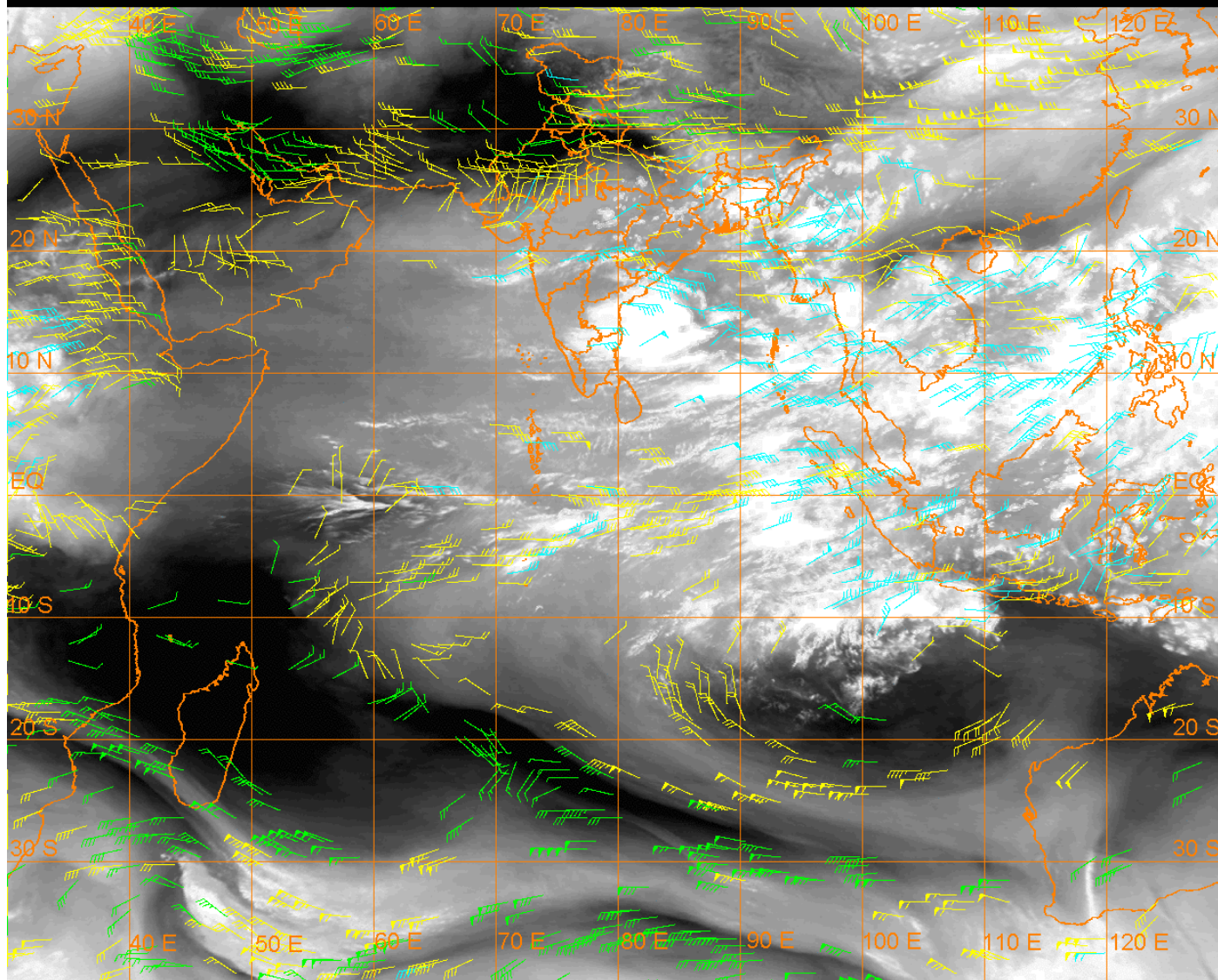
20 Kt

50 Kt

100-250 hPa

251-350 hPa

351-500 hPa





INSAT-3DR 20-SEP-2016 06:14 VIS IMG

VISIBLE WIND

(1Kt = 0.5 m/s)

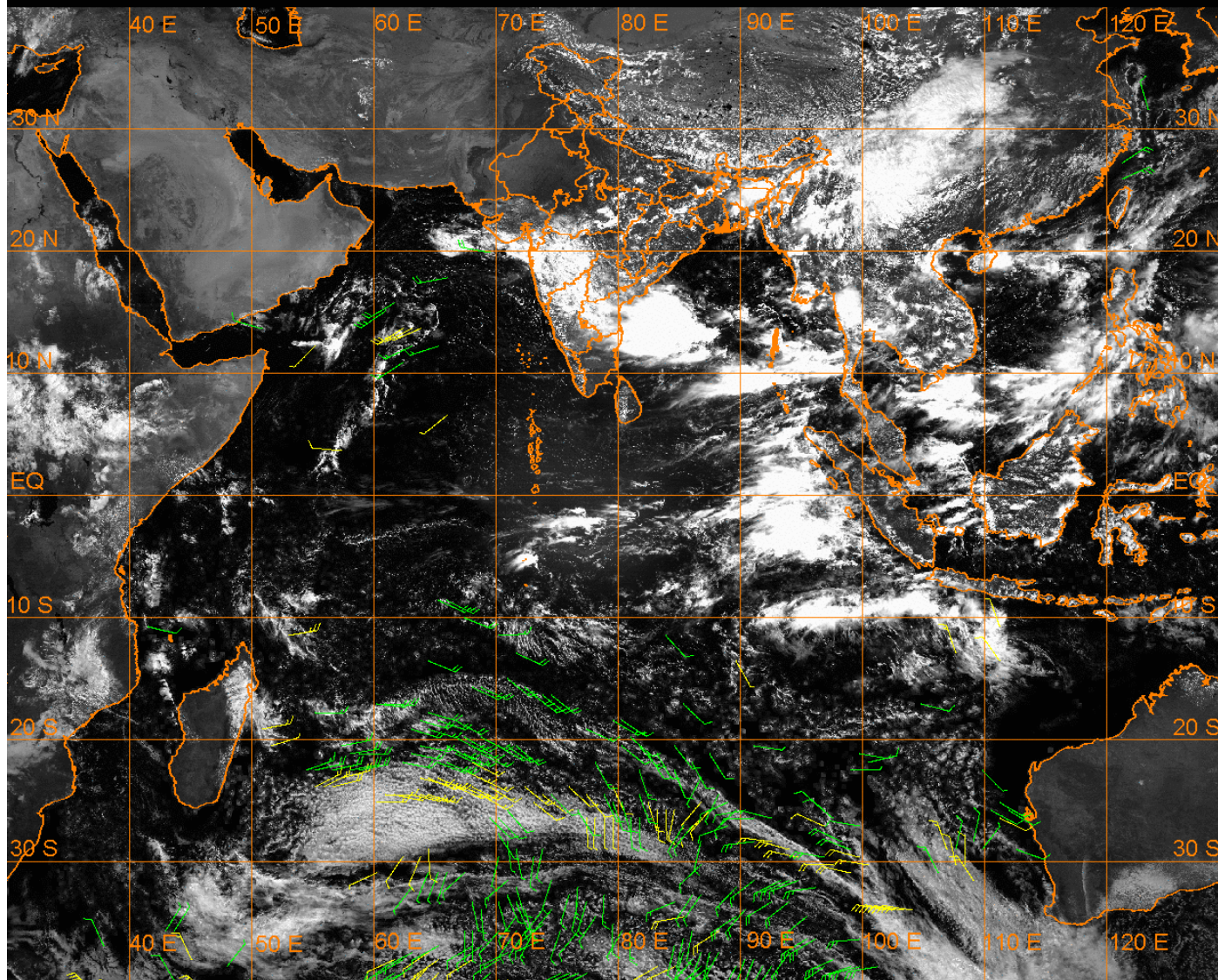
10 Kt

15 Kt

20 Kt

50 Kt

600-800 hPa
801-975 hPa





INSAT-3DR 20-SEP-2016 06:14 TIR1/WV IMG

HIGH LEVEL WIND

(1Kt = 0.5 m/s)

10 Kt

15 Kt

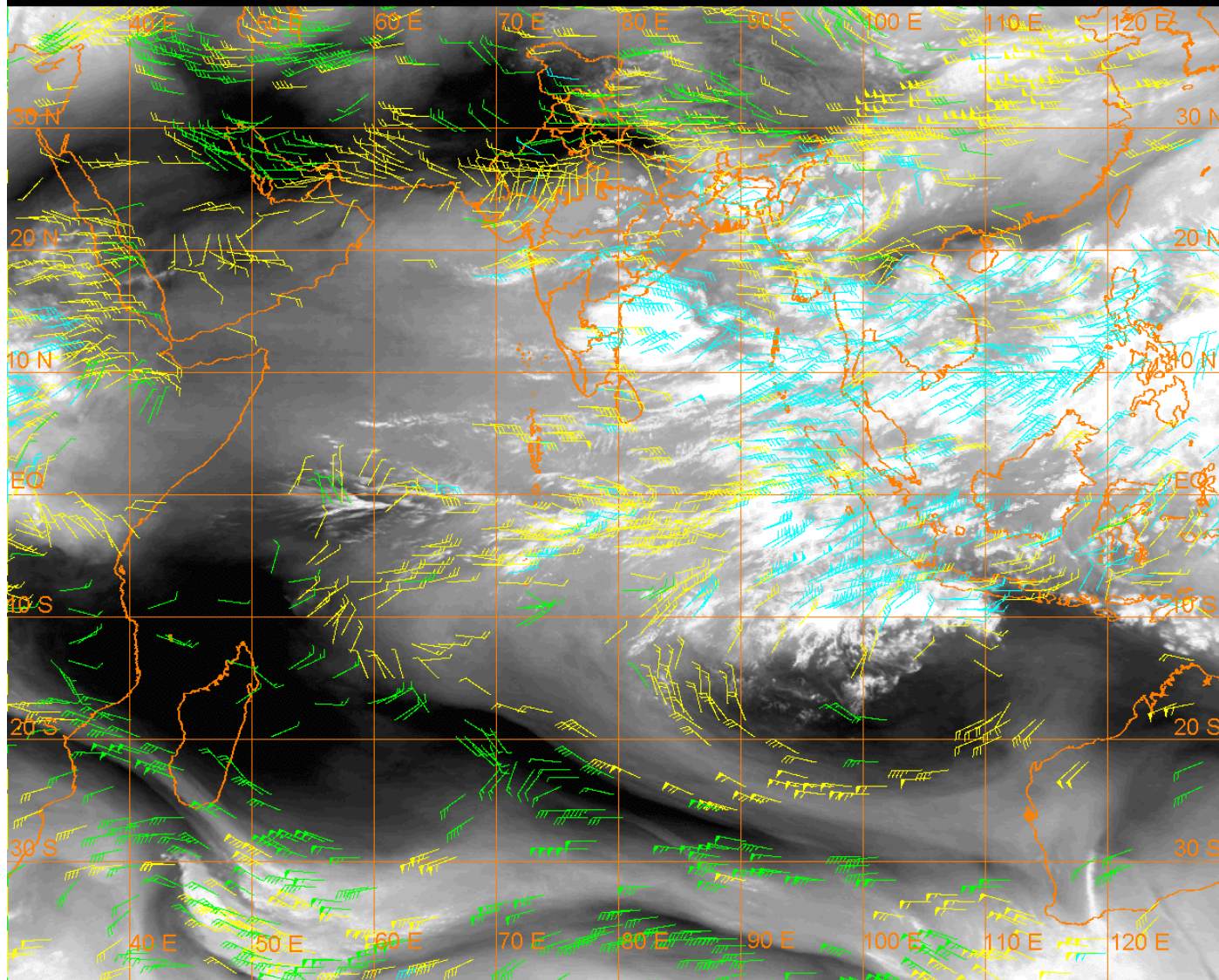
20 Kt

50 Kt

100-250 hPa

251-350 hPa

351-500 hPa





INSAT-3DR 20-SEP-2016 06:14 TIR1/VIS/MIR IMG

LOW LEVEL WIND

(1Kt = 0.5 m/s)

10 Kt

15 Kt

20 Kt

50 Kt

400-600 hPa

601-800 hPa

801-975 hPa

